

Donkey Car Image Setup

Here are detailed instructions on how to use the excellent [Balena Etcher](#) application to burn a Donkey Car Raspberry Pi image onto an SD card. This is NOT done on the Pi itself. It is done on another PC or a Mac.

I purchased a [32GB micro SD cards from Microcenter](#) for \$5. That is a LOT less than on Amazon. I also picked up an extra USB 3.0 micro SD card reader for about \$10. This reader read the micro SD directly without going through the SD converter. On less connection to go bad!

You can download the Donkey Car Raspberry Pi boot image from here:

<https://drive.google.com/open?id=1vr4nEXLEh4xByKAXik8KhK3o-XWgo2fQ>

On the Windows Explorer in Details mode it will look like this:

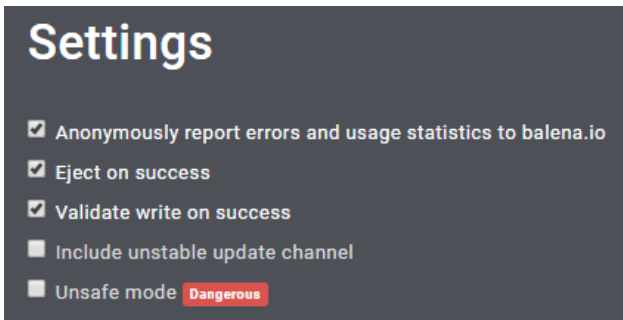


Note, there is need to unzip this file to see the DMG file. Etcher works fine on the zip file itself.

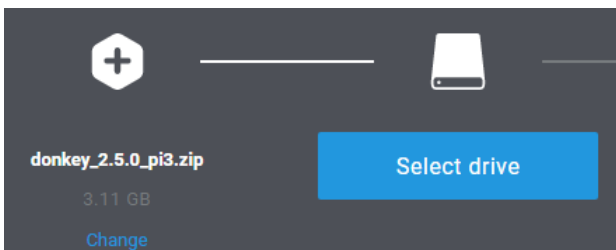
Downloaded the Balena Etcher from here:

<https://www.balena.io/etcher/>

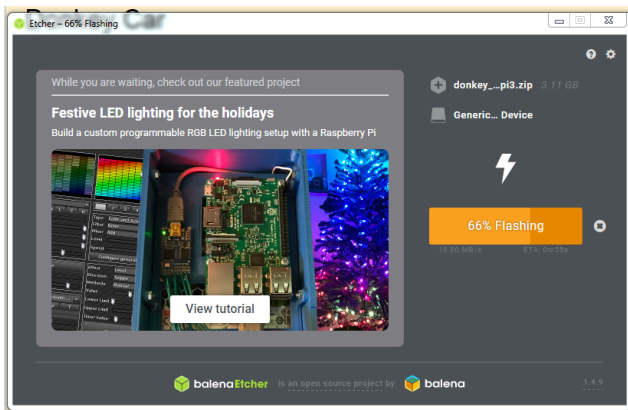
I used the default settings which will automatically "Eject" on Success:



Here the donkey 2.5.0 image is selected.

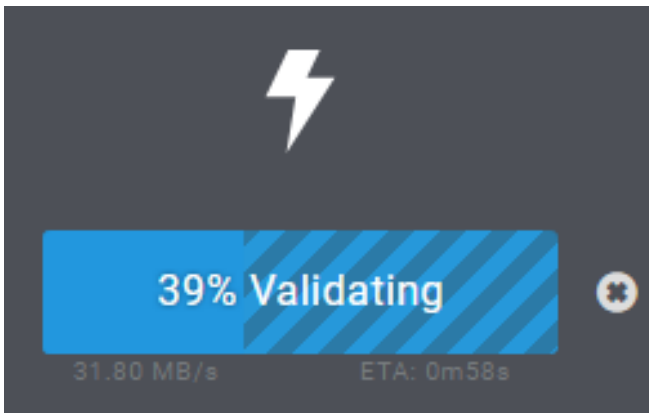


Here it is running. It took about two minutes.



You even get useful adds while the image is building!

Here it is validating the drive:



When the image is done validating (which takes about a minute) the SD card will automatically be "Ejected" (technically unmounted).

I then booted off the SD card. The UNIX prompt came up and used the pi/raspberry account and password can be used. I then did a "cd" into the /etc/wpa_supplicant and changed the wpa_supplicant.conf file and added the name of my local network and password. After a reboot I could ssh into my donkey car!

There are more directions here on the Donkey Car website:

http://docs.donkeycar.com/guide/install_software/#get-the-raspberry-pi-working