
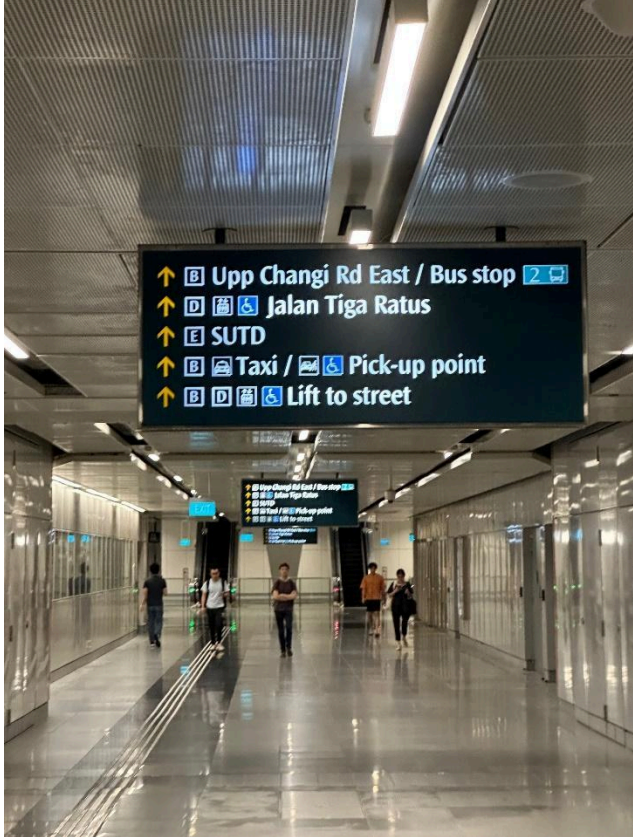
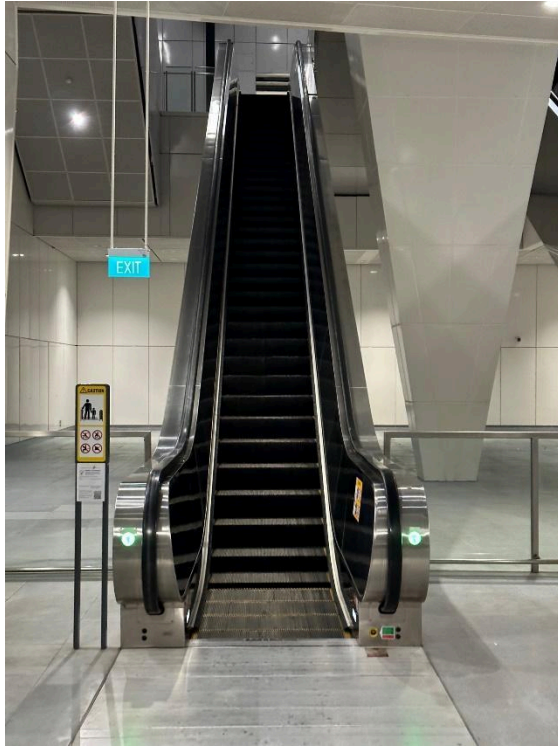


How to get to SUTD Library (Level 1, Building 1)?

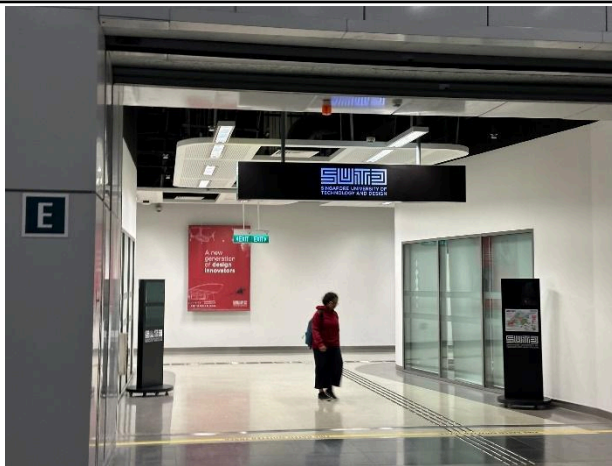
By Train: Downtown Line (blue line)

Station: Upper Changi

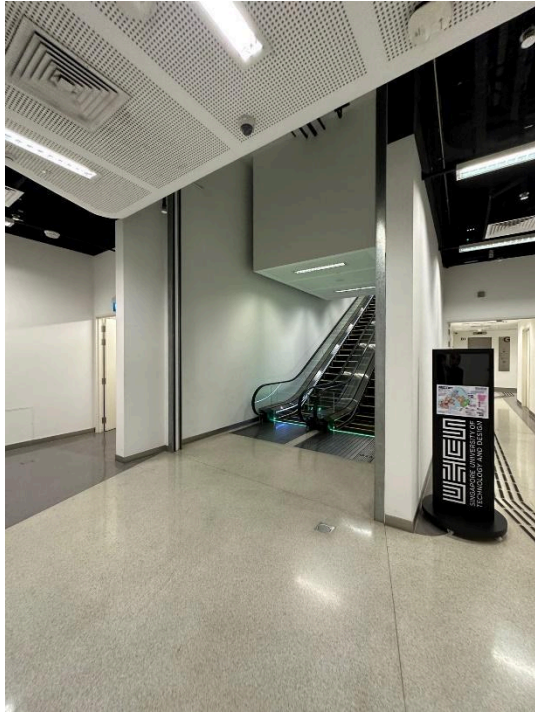
	<p>Proceed to the gantry after alighting at Upper Changi Station.</p> <p>Note: there is only one exit gantry</p>
	<p>After tapping, continue to walk straight and look out for “EXIT E”</p>



Go up the long
escalator.



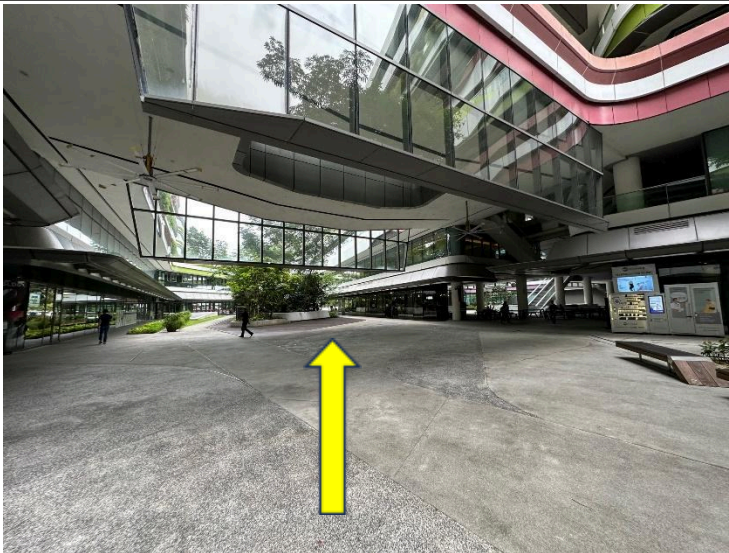
You will see “Exit
E” with SUTD
display. Walk in
and then turn
left.



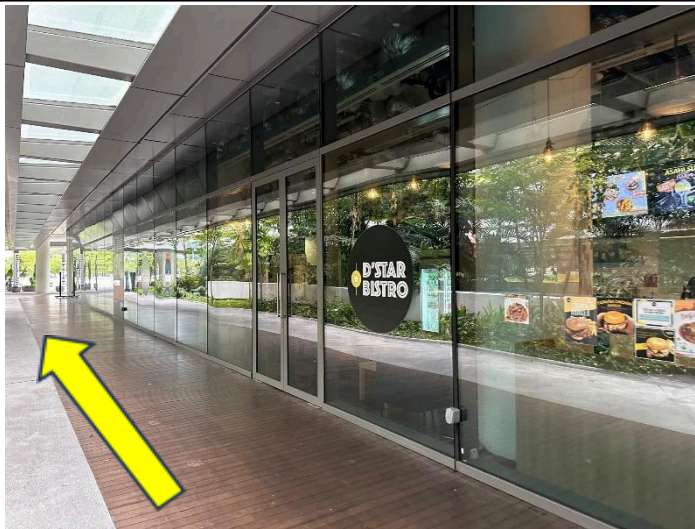
Continue walking and you will see an escalator. Go up.



Use this exit and continue to walk straight.

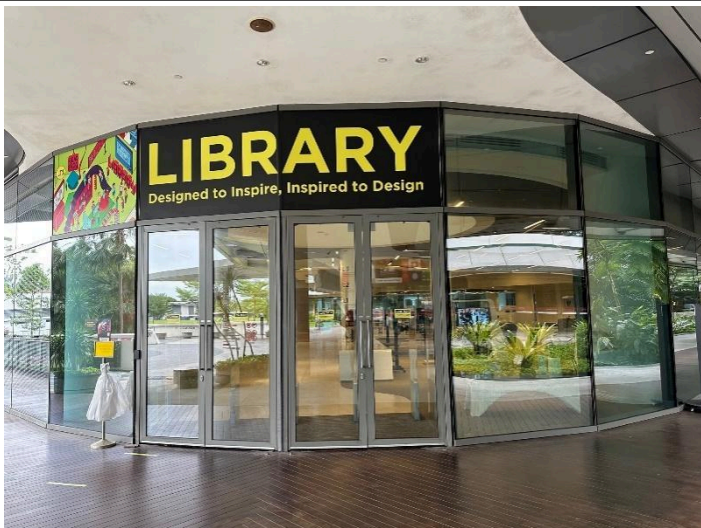


At this junction,
walk towards the
direction as
shown by the
yellow arrow.




You will see and
walk pass F&b
D*Star Bistro.

Continue walking
straight



You will see the
SUTD Library
Main Entrance
on the right side.

Enter.

	<p>You will be greeted with level 1, Library Counter.</p> <p>Note: Lookout for the signage to library training room @ level 1.</p>
--	--

Note:

If you are taking the SMRT Green Line:

- drop off at “Tanah Merah” Station
- change to middle platform & board towards Changi Airport
- drop at “Expo” station and change to Downtown Line towards “Bukit Panjang”
- drop at “Upper Changi station” (one stop after) and then follow the guide above.

By Taxi, Private Hire.

No complimentary parking available for those who drive.

Our Address:
SUTD Library, Building 1, Level 1
Singapore 487372



Enter via main
entrance facing
the EXPO side



Alight at the main
drop off.



Turn left and you
will see the SUTD
Library Main
Entrance.

Enter.



You will be greeted with level 1, Library Counter.

Note: Lookout for the signage to library training room @ level 1.