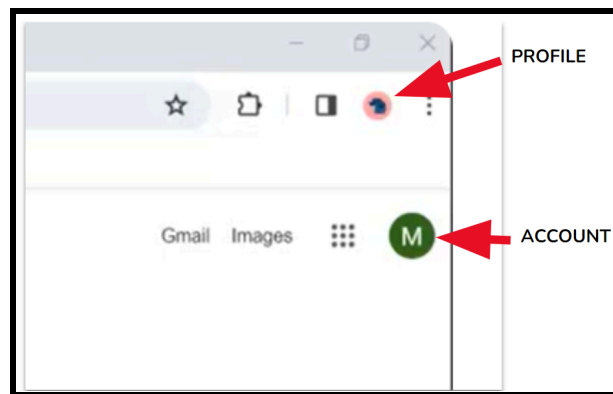


Congratulations! Your Washington Township Google account is now active.

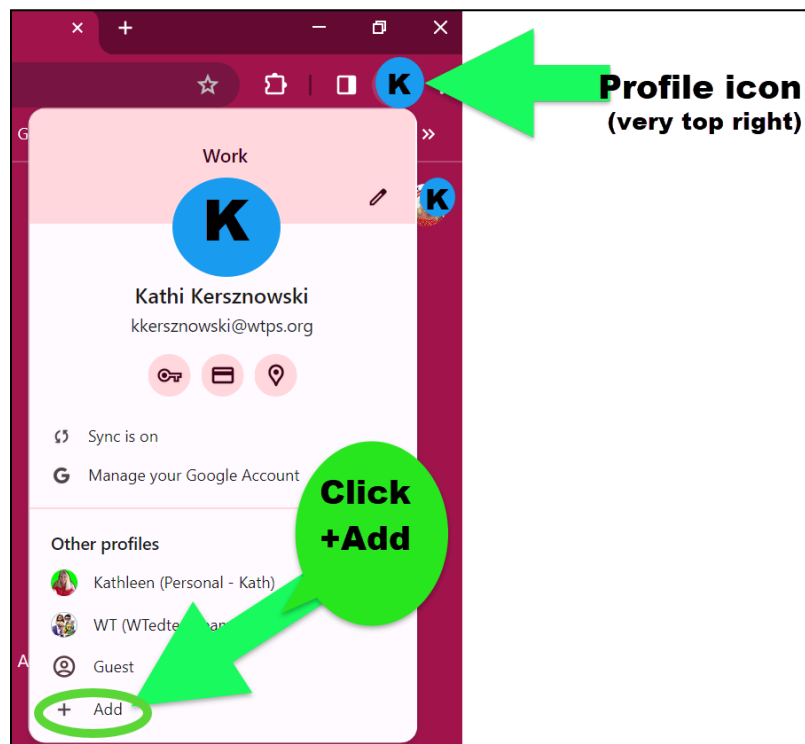
Please be sure to log in to this account prior to the February 16th training to ensure that there are no unforeseen issues.

 **Step-by-step printed directions are below:**

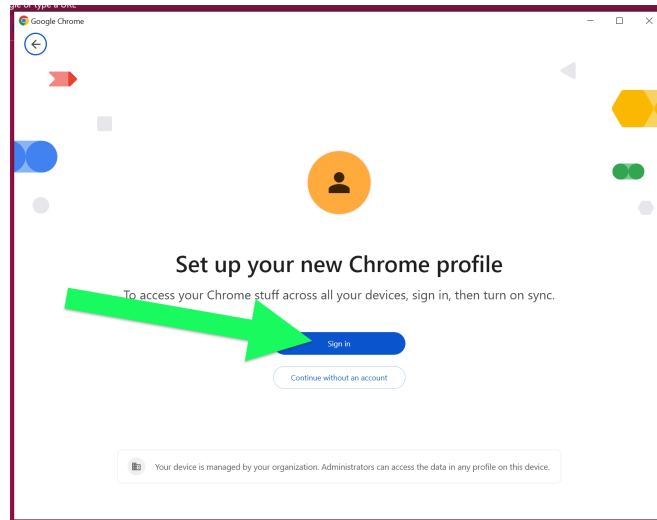
Please note, if you see two icons (circles) use the top icon.



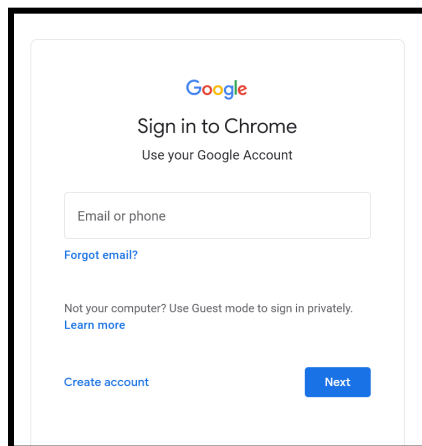
1. Open the Chrome browser and locate the profile (your initials or avatar) in the top right corner Click on "Add"



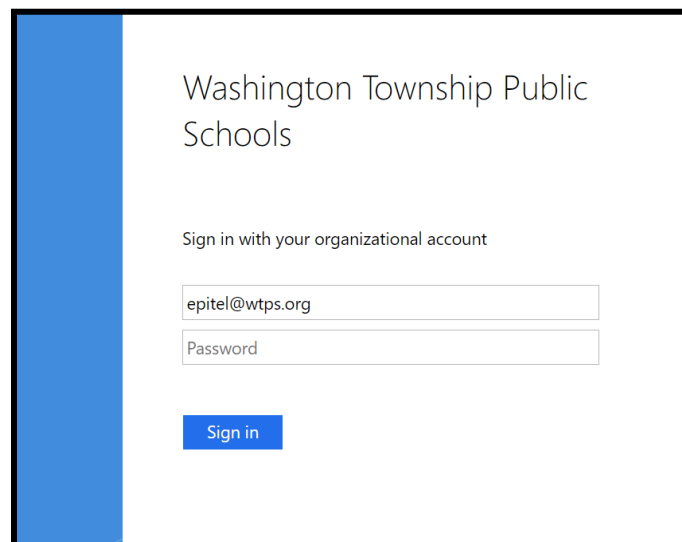
2. Select "Sign in" on this page.



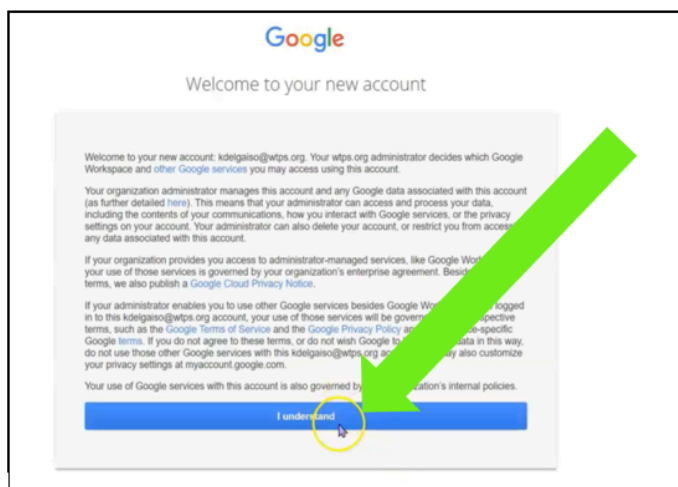
3. Type in your school email here:



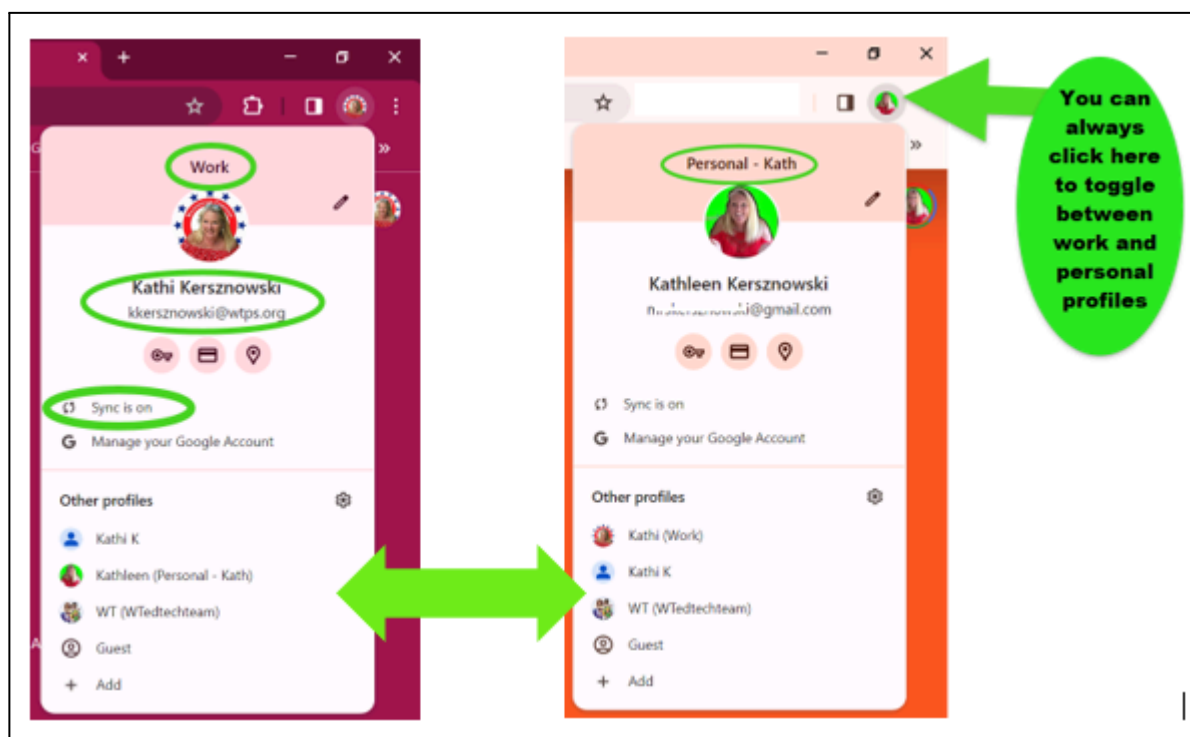
4. That will bring up the typical Washington Township Sign in page where you can enter your password.



5. Verify the account by clicking “I UNDERSTAND”



6. From now on, you can easily switch between work and personal profiles by using the Profile Switcher at the top of your Chrome browser. Always use the top circle icon as shown below.



 Video directions on how to log in can be found [HERE](#).