

Refined Item General Descriptors

Let's start off easy

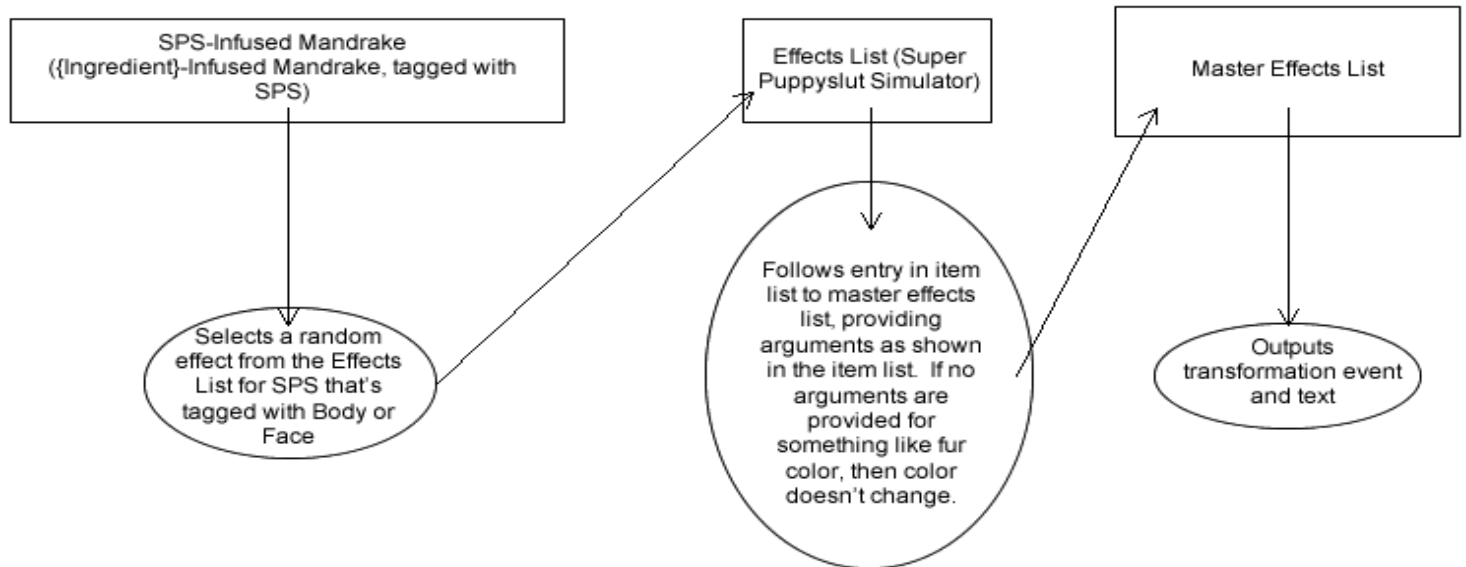
Rather than having every TF writer come up with fifteen individual refined items in addition to the one thing that they actually want to write, it makes more sense to have each refined item be of a stock type with a tag for the ingredient and the reagent, that can call just the TF or set of TFs in the ingredient that are tagged for the appropriate body part.

Text is written with the assumption that each reagent's effect needs to be discovered by the Champion through trial and error, but after either one usage or X number of usages they have enough brains to figure out what it does.

Reagent	Effect Type
Aloe	Skin
Mandrake	Body/Face Shape
Tall Reeds	Hair (and Horns?)
Hen's Eggs	Eyes
Thick Grass	Tail
Horehound	Cock
Wild Berries	Balls
Wild Melon	Breasts
Juicy Peaches	Booty
Dark Cocoa	Anus
Rose Petals	Pussy
Bottled Semen	Cum Type
Bottled Pussyjuice	Femcum Type
Sweet Cream	MilkType
Coarse Sand / Soft Mud	Masculinity / Femininity

Structure should basically look like this:

Super Puppyslut Simulator	
Skin	ChangeType(Fur)(Silver, Gray, Black, White)
Body	GrowTowards(72)
Body	ShrinkTowards(72)
Body	ToneTowards(100)
Body	ThinTowards(0)
Face	ChangeType(Canine)
Cock	ChangeType(Canine)(Red, Black)
Cock	GainKnot
Cock	GrowKnot
Pussy	ChangeType(Canine)(Pink)



{Ingredient}-Infused Aloe

Description

This aloe has been alchemically infused with the essence of {ingredient} and mashed into a fine cream. There's enough in the small jar to cover the skin, {aloe-tagged item has never been used // has been used before: hopefully to produce a more focused result than just using the ingredient raw. // hopefully focusing any transformative properties of the concoction directly on your [pc.skinFurScalesNoun].}

Ingestion Text

{First time using aloe: You're not sure what kind of effect this concoction is going to have, but it should be an improvement on just sticking random alchemical ingredients in your mouth. You

consider how to make use of it; you could perhaps glaze some rations with it, but it doesn't seem particularly tasty. You decide instead to try rubbing it into your skin.}

You scoop the alchemically treated aloe out of its jar with your finger and rub it back and forth between your hands, producing a light tingling sensation as the alchemical concoction starts to react with your [pc.skinFurScalesNoun]. You quickly begin rubbing the cream along your arms, your face, every square inch of your body you can reach. Dollop after dollop is removed from the jar until it's completely gone, leaving you tingling all over.

{Ingredient}-Infused Mandrake

Description

This mandrake root has been alchemically infused with the essence of {ingredient} and grated into a potion. There's just enough for one sip, {mandrake-tagged item has never been used // has been used before: which with the mandrake's potency should be more than enough to distill the ingredient's transformative properties into something more focused than using it raw, although you can't say what. // which should focus the ingredient's transformative properties into your bones, affecting just your body structure or face.}

Ingestion Text

{First time using mandrake: You're not sure what kind of effect this concoction is going to have, but it should be an improvement on just sticking random alchemical ingredients in your mouth.}

You eye the tiny bottle warily as you hold it aloft, no bigger than a shotglass. You've heard plenty of warning stories about mandrake being among the most dangerous of plants when brewed improperly or taken in excess, although a dose this size shouldn't pose any problems assuming you've prepared it correctly. Opting to take the risk, you tilt your head back and down the bottle's contents in one shot. Immediately a hot sensation races through your body as the potion seems to flow straight out of your stomach and into your very bones.

{Ingredient}-Infused Reeds

Description

This mass of tall reeds have been alchemically infused with the essence of {ingredient} and boiled into a potion. There's enough in the bottle for one dosage, {reeds-tagged item has never been used // has been used before: which should distill the ingredient's transformative properties into something more focused than using it raw, although you can't say what. // which should focus the ingredient's transformative properties into just your scalp, leaving the rest of your body alone.}

Ingestion Text

{First time using reeds: You're not sure what kind of effect this concoction is going to have, but it should be an improvement on just sticking random alchemical ingredients in your mouth. You're pretty sure the potion should be safe: if anything it's probably been weakened considerably by the mild ingredient.}

You swallow the potion with little hesitation. It's about as mild as they come, so much so that even the {ingredient} seems muted. The only place that tingles at all is your scalp, as the potion's transformative effects settle there.

{Ingredient}-Infused Egg

Description

This ordinary hen's egg has been alchemically infused with the essence of {ingredient}, hard-boiled, and peeled. In addition to being nutritious and satisfying, {egg-tagged item has never been used // has been used before: the infusion should have distilled the ingredient's transformative properties into something more focused than using it raw, although you can't say what. // the ingredient's transformative properties should have been boiled down together with the egg to focus on just your eyes, leaving the rest of your body alone.}

Ingestion Text

{First time using eggs: You're not sure what kind of effect this concoction is going to have, but it should be an improvement on just sticking random alchemical ingredients in your mouth. Not to mention you're feeling a bit hungry, and an egg should hit the spot nicely.}

You take a big bite out of the egg and swallow, then another, and another, until the whole thing's disappeared down your gullet. The tingling of the alchemic reaction starts in your stomach, but then travels up your spine towards your head, settling in behind your eyes in a way that's rather disorienting.

{Ingredient}-Infused Grass

Description

This bundle of thick grass has been alchemically infused with the essence of {ingredient} and boiled into a potion. There's enough in the bottle for one dosage, {grass-tagged item has never been used // has been used before: which should distill the ingredient's transformative properties into something more focused than using it raw, although you can't say what. // which should focus the ingredient's transformative properties into just your tail or lack thereof.}

Ingestion Text

{First time using grass: You're not sure what kind of effect this concoction is going to have, but it should be an improvement on just sticking random alchemical ingredients in your mouth.}

You swallow the potion with little hesitation. It seems to drop straight through your stomach as it flows down your throat, falling down into your hips and flowing back to pool in the base of your tailbone. The transformative tingles soon begin as the potion fully settles.

{Ingredient}-Infused Horehound

Description

This horehound plant has been alchemically infused with the essence of {ingredient} and baked into a lozenge about the size of a gumball. Swallowing it should {horehound-tagged item has never been used // has been used before: distill the ingredient's transformative properties into something more focused than using it raw, although you can't say what. // focus the ingredient's transformative properties on any male genitals you possess, or maybe even make you grow some if you're lacking.}

Ingestion Text

{First time using horehound: You're not sure what kind of effect this concoction is going to have, but it should be an improvement on just sticking random alchemical ingredients in your mouth. You consider how to eat the candy, but decide it's too hard to chew on: better to just swallow it in one go.}

You tilt your head back and gulp down the lozenge with a swig of water, sending it tumbling down into your stomach. A boiling sensation ensues inside you that starts in your gut before moving lower into your groin, as the magical candy sets to work.

{Ingredient}-Infused Berries

Description

These wild berries have been alchemically infused with the essence of {ingredient}, giving them a glazed sheen. There's enough for a light snack, which should {berries-tagged item has never been used // has been used before: distill the ingredient's transformative properties into something more focused than using it raw, although you can't say what. // focus the ingredient's transformative properties on only any balls you possess, or maybe even make you grow a pair if you're lacking.}

Ingestion Text

{First time using berries: You're not sure what kind of effect this concoction is going to have, but it should be an improvement on just sticking random alchemical ingredients in your mouth.}

You chew and swallow the berries one at a time, enjoying the sweet, fruity flavor that fills your mouth. Eating the bunch is just enough to leave you feeling satisfied, even as the transformative tingles of the enchanted berries begin to flow down between your legs.

{Ingredient}-Infused Melon

Description

This wild melon has been alchemically infused with the essence of {ingredient} and sliced, producing enough for a light meal. Eating it should {melon-tagged item has never been used // has been used before: distill the ingredient's transformative properties into something more focused than using it raw, although you can't say what. // focus the ingredient's transformative properties on only your chest, leaving the rest of your body alone.}

Ingestion Text

{First time using melon: You're not sure what kind of effect this concoction is going to have, but it should be an improvement on just sticking random alchemical ingredients in your mouth.}

You set into the melon slices with gusto, each bite providing a satisfying burst of flavor and an even more satisfying tingle in your chest, building stronger with every gulp of the enchanted pulp that flows down your throat. Before you even realize it, you've eaten the lot, and the tingle in your chest is a full-on rumbling feeling, a harbinger of the changes about to begin.

{Ingredient}-Infused Peaches

Description

This peach has been alchemically infused with the essence of {ingredient}, giving it a glazed appearance. There's enough for a light snack, which should {peaches-tagged item has never been used // has been used before: distill the ingredient's transformative properties into something more focused than using it raw, although you can't say what. // focus the ingredient's transformative properties on only your ass, leaving the rest of your body alone.}

Ingestion Text

{First time using peaches: You're not sure what kind of effect this concoction is going to have, but it should be an improvement on just sticking random alchemical ingredients in your mouth.}

The peach is delicious, so much so that you dig into it hungrily after the first bite. Each savory bite brings with it a stronger tingle in your backside, making you twist your hips a bit on reflex as you feel it grow and blossom into a full-fledged inferno of sensation. All too soon you're left with only the pit, and a new transformation about to begin.

{Ingredient}-Infused Cocoa

Description

These cocoa beans have been alchemically infused with the essence of {ingredient} and boiled into a hot drink. There's enough for a mug's worth, which should {cocoa-tagged item has never been used // has been used before: distill the ingredient's transformative properties into something more focused than using it raw, although you can't say what. // focus the ingredient's transformative properties on only your anus, leaving the rest of your body alone.}

Ingestion Text

{First time using cocoa: You're not sure what kind of effect this concoction is going to have, but it should be an improvement on just sticking random alchemical ingredients in your mouth.}

The cocoa tastes sweet and hot as you gulp it down, an absolute delicacy that's just the right temperature to send shivers of warmth all through your body. The other kind of shivers it causes, though, are much more focused, as your tailhole begins to quiver with building sensation. You bite your lip in excitement, eager to see what kind of transformation the elixir has in store for your backdoor.

{Ingredient}-Infused Petals

Description

This bundle of rose petals have been alchemically infused with the essence of {ingredient} and boiled into a potion. There's enough in the bottle for one dosage, {petals-tagged item has never been used // has been used before: which should distill the ingredient's transformative properties into something more focused than using it raw, although you can't say what. // which should focus the ingredient's transformative properties into just any feminine genitals you might possess. It might even make you grow a new womanhood if you're currently lacking.}

Ingestion Text

{First time using petals: You're not sure what kind of effect this concoction is going to have, but it should be an improvement on just sticking random alchemical ingredients in your mouth.}

The potion still has a bit of the scent of the flowers that it was made from when you pop the cork on it, giving it a mild yet exotic taste as you gulp it down. There's a sort of delicate playfulness

to the tingles that begin to run through your body, dancing around inside you before settling between your legs.

{Ingredient}-Infused Semen

Description

This bottled semen sample has been alchemically infused with the essence of {ingredient} and boiled into a potion. There's enough in the bottle for one dosage, {semen-tagged item has never been used // has been used before: which should distill the ingredient's transformative properties into something more focused than using it raw. You can't say what that focus is for certain, but you can certainly hazard a guess. // which should focus the ingredient's transformative properties into your own cum, altering it while leaving the rest of your body alone.}

Ingestion Text

{First time using semen: You examine the potion with a bit of a dubious look on your face. It doesn't *look* like it's made of cum, but still.}

You push any trepidation you might have aside and swallow the potion. It doesn't taste like semen, but you could swear you feel it wriggling as it flows down your throat and begins to work its magic, a quivering sensation that flows straight into {your balls // your prostate // where you imagine you would have a prostate if you had any male organs}. The massaging feeling is actually rather pleasant once you get used to it, although it won't last long, as your transformation soon begins.

{Ingredient}-Infused Pussyjuice

Description

This bottled sample of femcum has been alchemically infused with the essence of {ingredient} and boiled into a potion. There's enough in the bottle for one dosage, {pussyjuice-tagged item has never been used // has been used before: which should distill the ingredient's transformative properties into something more focused than using it raw. You can't say what that focus is for certain, but you can certainly hazard a guess. // which should focus the ingredient's transformative properties into your own feminine juices, altering it while leaving the rest of your body alone.}

Ingestion Text

{First time using pussyjuice: You examine the potion with a skeptical look on your face. It doesn't *look* like it's made using pussy juices, but still.}

You push aside any discomfort you might have and swallow the potion. It tastes a bit like honey, though more fluid, flowing straight through you and into {your womb // the place you imagine your womanhood would be if you had one}. One, two, three pleasant throbs rumble deep in your belly, heralding the change about to begin.

{Ingredient}-Infused Cream

Description

This cream has been alchemically infused with the essence of {ingredient} and spread over some sliced bread. There's enough for a light snack, {cream-tagged item has never been used // has been used before: which should distill the ingredient's transformative properties into something more focused than using it raw, although you can't say what. // which should focus the ingredient's transformative properties into just any breast milk you might possess. It might even make you start lactating if you can't already do so.}

Ingestion Text

{First time using cream: You're not sure what kind of effect this concoction is going to have, but it should be an improvement on just sticking random alchemical ingredients in your mouth.}

The cream is sweet and cloying, drowning out the plain taste of the bread underneath. The cream's the important part anyway, you think as the alchemical treatment sets to work the moment it hits your stomach. A warm, wet sensation builds in your chest, marking the lactic transformation about to begin.

{Ingredient}-Infused Sand

Description

This coarse sand has been alchemically infused with the essence of {ingredient} and mixed into a facial cream. There's enough in the small jar to cover your face in a dense layer, {sand-tagged item has never been used // has been used before: hopefully to produce a more focused result than just using the ingredient raw. // hopefully focusing any transformative properties of the concoction directly on your face to make it more manly.}

Ingestion Text

{First time using sand: You're not sure what kind of effect this concoction is going to have, but it should be an improvement on just sticking random alchemical ingredients in your mouth. You consider how to make use of it; you could perhaps glaze some rations with it, but mixed in a cream or no, eating sand doesn't seem particularly tasty. You decide instead to try rubbing it into your face.}

You scoop the alchemical cream out of its jar with your finger and rub it back and forth between your hands, getting a thick layer on your palms that you proceed to smear all over your face, coating every inch of exposed [pc.skinFurScalesNoun] above the neck. The coating starts thick and heavy, but soon begins to lighten as more and more of the elixir begins to soak into your body, until every last drop of the cream wicks away.

{Ingredient}-Infused Mud

Description

This soft mud has been alchemically infused with the essence of {ingredient} and mixed into a facial cream. There's enough in the small jar to cover your face in a dense layer, {sand-tagged item has never been used // has been used before: hopefully to produce a more focused result than just using the ingredient raw. // hopefully focusing any transformative properties of the concoction directly on your face to make it more girly.}

Ingestion Text

{First time using mud: You're not sure what kind of effect this concoction is going to have, but it should be an improvement on just sticking random alchemical ingredients in your mouth. You consider how to make use of it; you could perhaps glaze some rations with it, but mixed in a cream or no, eating mud doesn't seem particularly tasty. You decide instead to try rubbing it into your face.}

You scoop the alchemical cream out of its jar with your finger and rub it back and forth between your hands, getting a thick layer on your palms that you proceed to smear all over your face, coating every inch of exposed [pc.skinFurScalesNoun] above the neck. The coating starts thick and heavy, but soon begins to lighten as more and more of the elixir begins to soak into your body, until every last drop of the cream wicks away.