

Instructions for the Preparation of Full Papers for the SDF-KP 2024 (ICURP)

Author's Full Name

Affiliation, Location

email address

Danilo E. Fajardo

School of Management, Batangas State University, Batangas, Philippines

danilo.fajardo@gmail.com

Abstract

This document contains guidelines for the preparation of full papers to be submitted for the 5th International Conference in Urban and Regional Planning. Authors are requested to submit the full paper in MS Word and PDF format. The manuscript should be not more than 15 pages, written in English, and formatted according to this template. Please submit your paper to easychair.org/conferences/?conf=5thicurp18thpiclc. In case your submission has figures, kindly send high resolution image files (200 dpi) in JPEG, TIFF, BMP or PNG file formats as additional attachments even if the images have been laid out in the paper.

Insert 250- to 300- word abstract here.

Key words: Keyword 1, Keyword 2, Keyword 3, Keyword 4, Keyword 5

1. Format of Paper

Papers must have the following format:

- o A4 paper (21 cm wide by 29 cm long)
- o All (upper, lower, left and right hand) margins of 2.5 cm/1 inch.
- o Font: Times New Roman
- o Font Size: 9 point pitch
- o Line Spacing: 12 pt
- o Maximum length of 15 pages, including figures, tables, references and appendices.
- o Indent and do not leave a blank line between paragraphs.
- o Do not print anything in header and footer.
- o The official language of the Conference is English. All papers are to be submitted in English.

2. Article Content

All articles to be submitted for the conference must be studies covering topics of immediate and long-term concern for the urban and regional planning practice, which are grounded in sound theoretical and practical analytical frameworks that will stand up to the scrutiny of a peer-review process.

In addition, the submission must contribute towards the evolving discourse in the following fields:

- o Regional Complementarity and Competitiveness
- o Digital Transformation for Innovation in Planning
- o Sustainable Living and Climate Change

- o Inclusive and Transformative Development of Sustainable Cities
- o Lifelong and Lifeward Learning

3. Structure

First page: The title of the paper should be centered using 18 point pitch. Each author's name, organization, address, and e-mail address should be provided. Author's name should be typed using 12 point font size while the organization, address and e-mail should be typed using 8 point font size.

After a blank line below the information on the author(s), an abstract with a maximum of 250 words and at most five key words should be placed. After two blank lines, the main body of the paper follows, divided into sections and sub-sections when necessary. The sections must be numbered and their title typed using 11 point pitch size (e.g., 1. Introduction). Sections must be numbered using two digits and their title typed using 9 point font size (e.g., 2.1 Developed Models). There should be two blank lines before each title of the section with the exception of new pages. One blank line must be left before the title of the sub-section with the exception of new pages. New paragraphs are to be indented. Listings should be indented as well.

The order of the paper is as follows:

First: Title, authors' information and the chapters of the main body of the text, numbered as indicated above.

Second: Acknowledgment (title left justified and typed using 10 point font size), if required.

Third: References (title left justified and typed using 10 point pitch size. The references must be typed using 8 point size font).

Fourth: Appendix, if necessary.

4. Tables, Figures and Equations

4.1 Format of Tables

Tables must be numbered sequentially and have a reasonable explanatory title centered above the table. The measurement units employed in the table must be indicated. Font size for the Table title as well as the contents of the table should be 8 point pitch.

Table 1 Land Area per Hazard Category in Tacloban City			
Hazard	Category (in hectares)		
	Low	Moderate	High
Flood	1175.2	908.0	301.7
Storm Surge	154.3	488.0	1655.0
Rain induced Landslide	449.2	1760.1	2835.9
Multi-hazard	944.3	2617.9	4532.3

4.2 Format of Figures

Figures must be drawn using good quality graphic software, and they must be numbered sequentially and have a reasonably informative title centered under the figure. Font size for the Figure title is 8 point pitch.

Authors must include camera-ready, high-resolution images (preferably 200 dpi or higher) separately from the document. Pictures should be in JPEG, TIF, or PNG format.

Figures must be drawn using good quality graphic software, and they must be numbered sequentially and have a reasonably informative title centered under the figure. Font size for the Figure title is 8 point pitch.

Authors must include camera-ready, high-resolution images (preferably 200 dpi or higher) separately from the document. Pictures should be in JPEG, TIF, or PNG format.

Figures must be drawn using good quality graphic software, and they must be numbered sequentially and have a reasonably informative title centered under the figure. Font size for the Figure title is 8 point pitch.

Authors must include camera-ready, high-resolution images (preferably 200 dpi or higher) separately from the document. Pictures should be in JPEG, TIF, or PNG format.

Figures must be drawn using good quality graphic software, and they must be numbered sequentially and have a reasonably informative title centered under the figure. Font size for the Figure title is 8 point pitch.

Authors must include camera-ready, high-resolution images (preferably 200 dpi or higher) separately from the document. Pictures should be in JPEG, TIF, or PNG format.

Figures must be drawn using good quality graphic software, and they must be numbered sequentially and have a reasonably informative title centered under the figure. Font size for the Figure title is 8 point pitch.

Authors must include camera-ready, high-resolution images (preferably 200 dpi or higher) separately from the document. Pictures should be in JPEG, TIF, or PNG format.

Figures must be drawn using good quality graphic software, and they must be numbered sequentially and have a reasonably informative title centered under the figure. Font size for the Figure title is 8 point pitch.

Authors must include camera-ready, high-resolution images (preferably 200 dpi or higher) separately from the document. Pictures should be in JPEG, TIF, or PNG format.

Figures must be drawn using good quality graphic software, and they must be numbered sequentially and have a reasonably informative title centered under the figure. Font size for the Figure title is 8 point pitch.

Authors must include camera-ready, high-resolution images (preferably 200 dpi or higher) separately from the document. Pictures should be in JPEG, TIF, or PNG format.

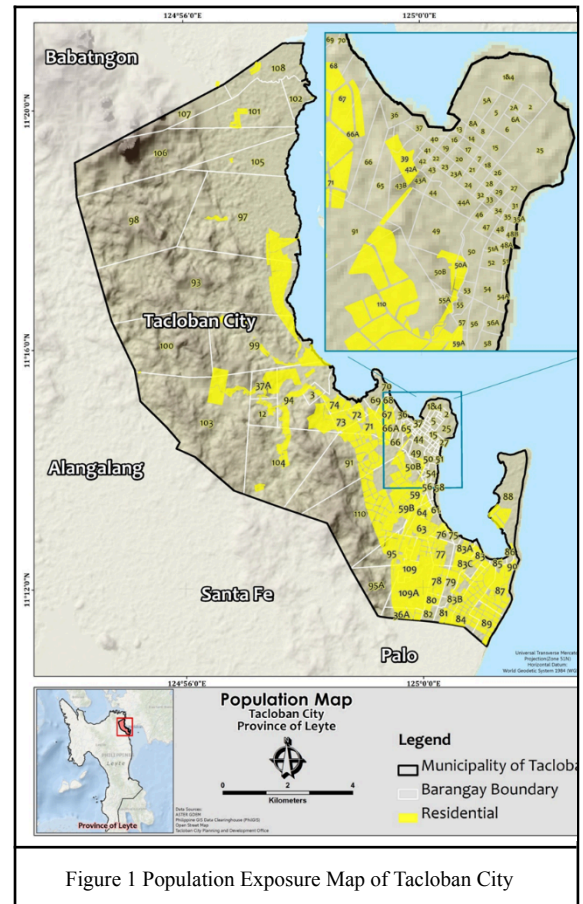


Figure 1 Population Exposure Map of Tacloban City

Line drawings must be of good quality, with all letterings, graph lines and point on graphs sufficiently large and clear to allow for reproduction and scaling without loss of detail when reduced to or enlarged to the size suitable for publication.

5.3 Format of Equations

Equations must be written preferably with the same word processor used for the rest of the text, without handwritten symbols in order to aid legibility. Equations must be numbered sequentially with their numbers in parenthesis and right justified. Symbols used in an equation should be defined immediately following the equation where first used. The sample format is shown below.

Example of Equation:

The model can be formulated as follows:

$$f(y, b, x^*, x_0^*) \quad (1)$$

$$s. t. \quad \langle c(x^*), x - x^* \rangle \geq 0 \quad \forall x \in K, \quad (2)$$

$$\langle c(x_0^*), x_0 - x_0^* \rangle \geq 0 \quad \forall x_0 \in K_0, \quad (3)$$

where,

y: set of freight network improvement actions,

b: vector of investment cost,

x: vector of link flows,

x^* : vector of equilibrium link flows,

x_0^* : vector of link flows w/o project,

x_0^* : vector of equilibrium link flows w/o project,

c: vector of link user costs,

K, K₀: feasible constraint set.

6. Citation and Referencing

All texts lifted or directly quoted from references are to be indented and italicized. In the body of the text, papers or documents are referred to by the author's surname with the year of publication in parenthesis; if the quotation is itself in parenthesis, the year of publication is separated by a comma. If the reference has more than two authors, only the surname and initials of the first author followed by et al. in italics will appear in the body of the text.

References should be cited using the author and year format, i.e. Cruz (1986), while the complete list of references cited should be at the end of the manuscript, following the standard APA bibliographic format:

Book:

Serote, E.M. (2004). *Property, patrimony, and territory: Foundations of land use planning in the Philippines*. Quezon City: UP School of Urban and Regional Planning and UP Planning and Development Research Foundation.

Article in journal:

Carbine, M.I., Jr. (2015). Coastal area planning. *Philippine Planning Journal*, 20 (2), 11-22.

Article in newspaper:

Pagsanghan, J. (2008, July13). Evaluating RP's asset reform. *Philippine Daily Inquirer*. p. A14.

Unpublished thesis or dissertation:

Juanico, M. B. (2007). The selectively linked autocircuits model (SLAM): An alternative response to the development problematic of developing countries (Doctoral dissertation). University of the Philippines School of Urban and Regional Planning.

World Wide Web text:

GVU's 8th WWW user survey. (n.d.).

Retrieved August 8, 2000, from http://www.cc.gatech.edu/gvu/user_surveys/survey-1997-10/.

On-line newspaper article:

Bonabente, C. L. & Avendaño, C. O. (2008, July 22). 14.5M experienced hunger, says SWS. *Philippine Daily Inquirer*. Retrieved August 5, 2008, from <http://newsinfo.inquirer.net/inquirerheadlines/nation/view/20080722-149870/145M-experiencedhunger-says-SWS>.

Acknowledgment

The authors would like to acknowledge the research and monetary support provided by the Commission on Higher Education (CHED) in the conduct of this study.

References

- Bonabente, C. L. & Avendaño, C. O. (2008). July 22). 14.5M experienced hunger, says SWS. *Philippine Daily Inquirer*. Retrieved August 5, 2008, from <http://newsinfo.inquirer.net/inquirerheadlines/nation/20080722-149870/145M-experiencedhunger-says-SWS>.
- Carbine, M.I., Jr. (2015). Coastal area planning. *Philippine Planning Journal*, 20 (2), 11-22.
- Juanico, M. B. (2007). The selectively linked autocircuits model (SLAM): An alternative response to the development problematic of developing countries (Doctoral dissertation). University of the Philippines School of Urban and Regional Planning.
- GVU's 8th WWW user survey. (n.d.). Retrieved August 8, 2000, from http://www.cc.gatech.edu/gvu/user_surveys/survey-1997-10/.
- Pagsanghan, J. (2008, July 13). Evaluating RP's asset reform. *Philippine Daily Inquirer*. p. A14.
- Serote, E.M. (2004). *Property, patrimony, and territory: Foundations of land use planning in the Philippines*. Quezon City: UP School of Urban and Regional Planning and UP Planning and Development Research Foundation.