

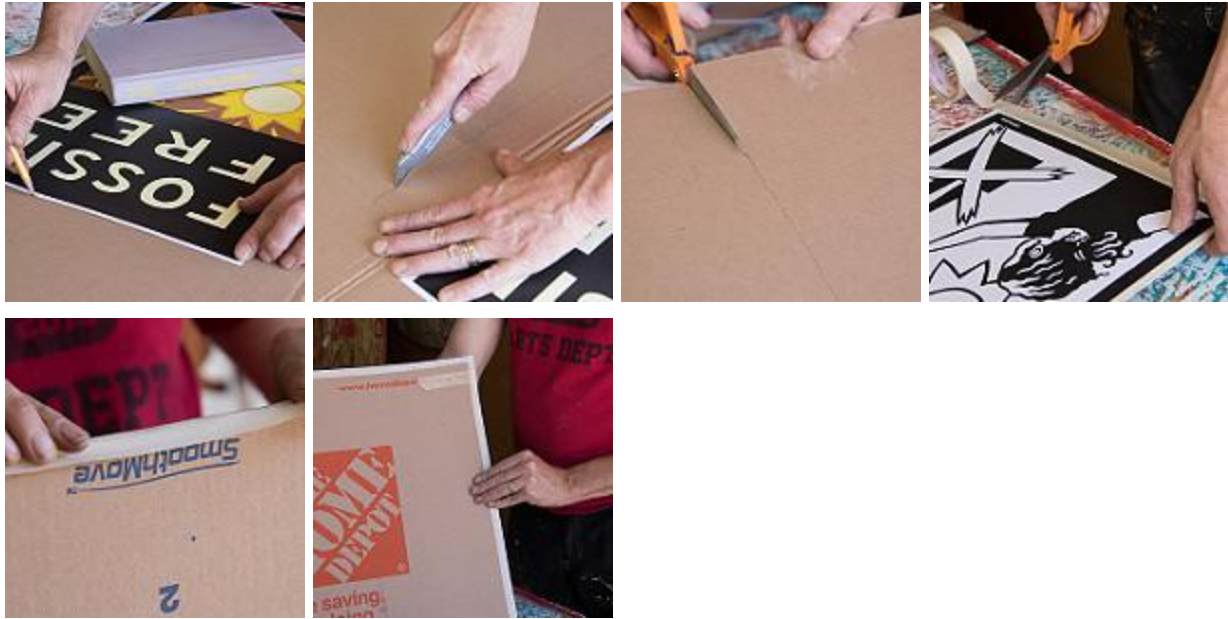
Tips for Making Signs from Design Downloads

Here are tips on how you can use these designs to copy and make signs or posters.

- **DOWNLOAD:** the design/s you want to use.
- **PRINT:** print from a USB flash drive, your email, or your computer. Go to your printer or printing place (like FedEx) or find out if anyone you know has access to color printing. I print on 11x17 (A3) paper if I am going to use that size or to enlarge. Some copy shops have larger paper you can print on.
- **COPY:** Make color copies (or black and white copies -- depending on design) on 11x17 (A3) . If this will be the final size of your signs, it's more durable if you can get on cardstock or a heavy paper--or you can tape or glue to cardboard or other rigid backing..
- **ENLARGE:** One way to make a larger sign is to enlarge the design onto two sideways 11x17 (A3) sheets, cut out and paste together on a rigid backing, and create one bigger sign (or do it in 4 sections and make it even bigger). You can also get larger color copies at many copy shops, but it can be more expensive (If you know of friends, family, etc that may have access to a color copier ask them!).



- **MOUNT:** You can also mount them on cut-to-size posterboard/cardboard/thin plywood/etc. using spray adhesive, rubber cement, a quality glue stick, or 1 inch masking tape around the edges.



- **HAND COLOR -- HAVE AN ART PARTY:** The black and white designs are great to print out and color by hand -- a perfect reason for hosting an art build. You can easily copy the design onto 11×17 (A3) paper, or enlarge even bigger, either by cutting and pasting two or more enlarged sections together or by copying on an extra-large format copier (some copy stores have them). You can use colored pencils, watercolors, or watered-down latex or acrylic paints (watered down so that the black lines come through, but the color is not too weak). Get brushes that work and do some testing. This is a great group art making activity to do to prepare for the strike.



Hand-colored (upper left) color printer (upper right) and black and white.