

**Subtitle as needed (paper subtitle)**

**Keywords :** *at least three keywords (First characters of each word are in capital/uppercase letters), Italic.*

Table 1. Research Subjects Characteristic Summary

Variable	Mean	SD	Range
Age (year)	35.1	3.4	28 – 41
Body Weight (kg)	62.2	4.7	57.3 – 69.8
Body Height (cm)	163.2	3.1	160 – 172
Working Experience (year)	5.3	3.2	3 – 10
Body Mass Index	22.7	1.1	20.9 – 23.2

Figure numbers and labels should be placed one line under the figure:

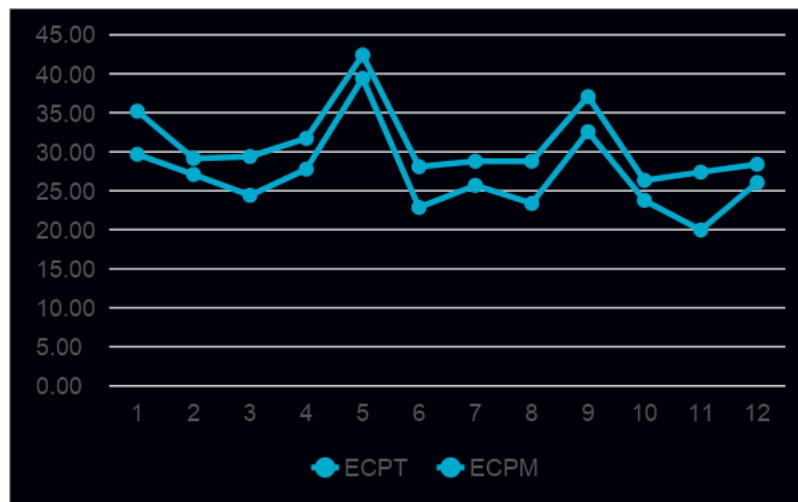


Figure 1. ECPT and ECPM, This is the example for figure formatting

### 3.2. Equations

Equations should be centred and should be numbered with the number on the right-hand side

$$(x + c)^n = \sum_{k=0}^n nx + 7k(x + c) \quad (x + c)^n = \sum_{k=0}^n nx + 7k(x + c) \quad (1)$$

Refer to Eq. (1), the evaluation of .....

### 3.3 Citation and References

Online references will be linked to their original source, only if possible. To enable this linking extra care should be taken when preparing reference lists. Number citations consecutively in square brackets [1]. The sentence punctuation follows the brackets [2]. Multiple references [3], [4] are each numbered with separate brackets [5]–[7]. Bibliography is the final part of the paper, written following the IEEE style. You should attach at least 15 references. References should be in last decade. Use Mendeley to write the references. The use of primary source for the references is strongly recommended at least 80% of the total number of your references.

## 4. CONCLUSION

Full paper must follow this pattern. Please encourage others to publish their works with LOGIC Journal. Logic is a peer-reviewed research journal aiming at promoting and publishing original high quality research in all disciplines of engineering and applied technology. All research articles submitted to Logic should be original in nature, never previously published in any journal or presented in a conference or undergoing such process across the world. All the submissions will be peer-reviewed by the panel of experts associated with particular field. Submitted papers should meet the internationally accepted criteria and manuscripts should follow the style of the journal for the purpose of both reviewing and editing.

## 5. ACKNOWLEDGEMENT

If your paper is accepted for publication, you will be asked to pay an Article Publication Fee to cover publications costs. After the author has been informed by email that the author's paper is accepted, you should pay the fee to Jurnal LOGIC. If you do not have funds to pay such fees, you will have an opportunity to waive each fee. We do not want fees to prevent the publication of worthy work..

## 6. REFERENCES

- [1] M. Yusuf, N. Adiputra, I. Dewa, P. Sutjana, and K. Tirtayasa, "The Improvement of Work Posture Using RULA (Rapid Upper Limb Assessment) Analysis to Decrease Subjective Disorders of Strawberry Farmers in Bali," *Int. Res. J. Eng. IT Sci. Res.*, vol. 2605, no. 9, pp. 4290–2016, 2016.
- [2] A. Manuaba, "Total approach is a must for small and medium enterprises to attain sustainable working conditions and environment, with special reference to Bali, Indonesia," *Ind. Health*, vol. 44, no. 1, pp. 22–26, 2006.
- [3] J. Dul and B. Weerdmeester, *Ergonomics For Beginners A Quick Reference Guide, Second Edition*, 3rd ed. London: Taylor & Francis, 2008.
- [4] K. H. E. Kroemer and E. Grandjean, *Fitting The Task To The Human, Fifth Editione A Textbook Of Occupational Ergonomics*. London: CRC Press, 2009.
- [5] A. Manuaba, "Research and application of ergonomics in developing countries, with special reference to Indonesia," *Indones. J. Ergon.*, vol. 1, no. 1, pp. 24–30, 2000.
- [6] M. Yusuf and I. M. Suarta, "Using grind modification and improvement of work posture can decrease workload and subjective disorder and increase work productivity jewel worker at polishing process part in Subagan Vilage Karangasem," in *Proceedings - Ergo Future 2006, International Symposium on Past, Present and Future Ergonomics, Occupational Safety and Health*, 2006.
- [7] M. A. Santiana, M. Yusuf, and W. D. Lokantara, "Mother chair reparation to decrease subjective disorders in exclusive breast-feeding period," *J. Phys. Conf. Ser.*, vol. 953, no. 1, 2018.

