

ASSOCIATED STUDENTS OF STANFORD UNIVERSITY

CANDIDATE GUIDE

Last Updated: April 13, 2021

Welcome to the ASSU! The ASSU is composed of three branches that resemble the federal government: an executive branch, a legislative branch, and a judicial branch. Every year, the ASSU holds its election to vote for representatives within the executive and legislative branches. The positions up for election are those in the following offices: the ASSU Executive, Undergraduate Senate, Graduate Student Council, and Class Presidents.

This packet contains information for **prospective ASSU candidates** who are considering running for one of these offices. Additionally, this guide will serve as a reference for those who qualify as candidates on the official ballot for the ASSU Spring Quarter Election. To confirm your eligibility and review regulations for your candidacy, please take a moment and read through this Candidate Guide.

It is important to note that this guide is a working project. Please make sure to check back for updated iterations of the guide. For more information about the ASSU, please visit assu.stanford.edu. For information about the election process, visit elections.stanford.edu.

For specific questions about the election process, please feel free to email the corresponding Elections Commissioner. Contact information can be found at the end of this guide.

Good luck!

Edwin Ong '23
Elections Commissioner 2020-21

TABLE OF CONTENTS

Introduction	1
Table of Contents	2
Frequently Asked Questions	3
ASSU Structure and Terminology	4-5
ASSU Election - General Information	6-8
Executive	9
Undergraduate Senate	10-11
Graduate Student Council	12
Class Presidents	13
Contact Information	14

FREQUENTLY ASKED QUESTIONS

Why do the ASSU Elections matter? What impact does it have on students?

All students at Stanford pay an ASSU Fee each quarter (for Undergraduates, \$176, for Graduate Students, \$44). This appears on your tuition bill as “Association Fees” or “ASSU Fees”. The students you elect in the Spring Quarter General Election, and the Annual Grant and Special Fee groups you choose to support determines how this money is used.

Who can vote? How do eligible voters vote?

Any degree-pursuing Stanford student who did not take a Leave of Absence in both Fall quarter and Winter quarter 2020-2021 is eligible to vote.

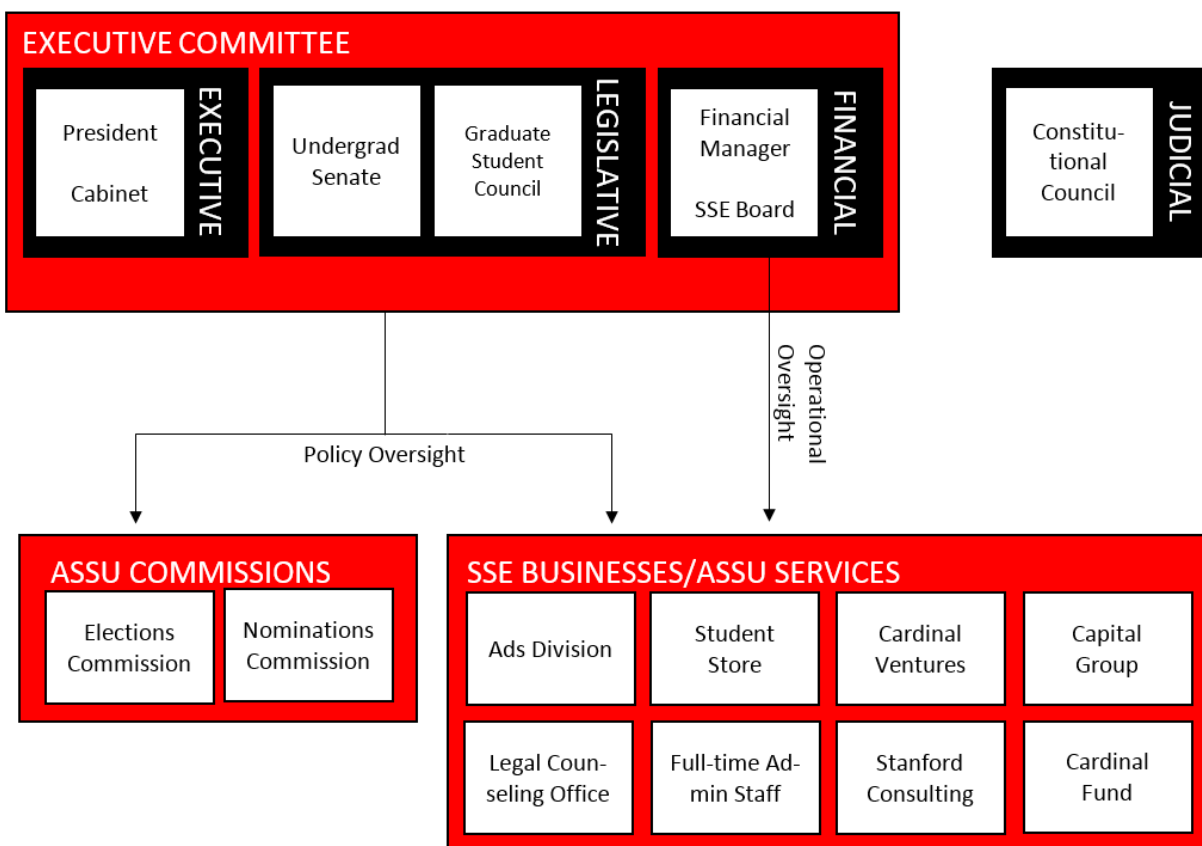
Who is eligible to run for an elected position?

Any degree-pursuing Stanford student who did not take a Leave of Absence in both Fall quarter and Winter quarter 2020-2021 is eligible to run, provided that they are in good standing with the University and plan to be enrolled for the full duration of their term.

How do I run for an elected position?

Students interested in running for one of the elected ASSU offices must declare their intention to run by submitting the filing form found through elections.stanford.edu during the filing period (March 10-19). Depending on the office, prospective candidates must acquire a certain number of petition signatures to place their candidacy on the official ballot. The Primary Elections will be from March 29 to April 2. Eligible voters will receive the petitioning form in their email inbox via Qualtrics on March 29.

ASSU STRUCTURE AND TERMINOLOGY



ASSU – Associated Students of Stanford University

The ASSU is the entire student governance structure at Stanford and represents all students. The ASSU also organizes and manages all registered student organizations at Stanford.

ASSU Executives

Elected together, the Executive President and Vice President represent the student body in meaningful ways to university administration, through policy creation and enforcement and advocacy for student issues. Graduate students and undergraduate students can be eligible to form an Executive Slate since the Executive represents both student populations.

Undergraduate Senate

The Senate is the legislative and representative body for undergraduate students at Stanford. Composed of 15 undergraduate students, the Senate opens all of its seats for election every year during the Spring Quarter General Election.

GSC - Graduate Student Council

The GSC is the legislative and representative body for graduate students at Stanford. Composed of 15 graduate students, the GSC opens all of its seats for election every year during the Spring Quarter General Election.

Constitutional Council

Composed of five members, the Constitutional Council adjudicates all cases where the constitutionality of an act by any member of the Association body is called into question.

ASSU Elections Commission

The ASSU Elections Commission is charged to operate and regulate all elections for the ASSU. This includes the annual Spring Quarter General Election and any Special Elections that are called.

Office of Student Engagement (OSE)

This office provides support to all recognized student groups and advises the ASSU. Sophomore and Junior Class Presidents also receive guidance from OSE.

Class Presidents

Although not technically part of the ASSU governance structure, Sophomore, Junior, and Senior Class Presidents appear on the ballot for their respective classes to vote. In contrast to the Senate, Class Presidents mostly deal with class programming and events instead of funding and policy.

ELECTION INFORMATION

2021 Election Timeline (All times in PT)

Event	Date Start	Time Start	Date End	Time End
Declaration of Intent Period	March 10	12:00 AM	March 19	11:59 PM
Primary Elections	March 29	12:00 AM	April 2	11:59 PM
Voter's Pamphlet	April 5	12:00 AM	April 14	11:59 PM
Campaigning	April 19	12:00 AM	April 28	11:59 PM
General Elections	April 29	12:00 AM	April 30	11:59 PM
Results	May 3	5:00 PM	-	-

Declaration of Intent

Every prospective candidate **must** declare their intention to run during the election by visiting the ASSU filing form here https://stanfordir.qualtrics.com/jfe/form/SV_3C1k80o8Nmn2yPP.

Primary Election

The primary elections (referred to as “primaries”) is the process by which candidates for the elected offices get placed on the official ballot for the ASSU Spring Quarter General Election. Eligible voters will be able to sign the petitions of candidates and slates who filed during the filing period through an individualized Qualtrics survey delivered to their email inbox on February 22. Depending on the office, candidates must also acquire a number of valid primary votes for ballot placement before the end of the petitioning period:

- Executive - 200 valid votes from undergraduate or graduate students
- Senate - 100 valid votes from undergraduate students
- Class Presidents - 100 valid votes from undergraduate students from the respective social class (i.e., Class of 2021, 2020, 2019)
- GSC - no votes required

Primary Election Regulations

During the primaries, candidates are not allowed to spend money on election related materials.

On-campus, in-person campaigning is not permitted.

The use of official election accounts is allowed to promote candidates and slates. All advertising on personal social media accounts is prohibited, except when referring voters to campaign accounts.

Voter's Pamphlet

After making it through the primaries, you will have the ability to write a 'Candidate Statement'. This is your Voter's Pamphlet statement, which will be linked to your name on the official ballot. This means both petitioners and voters will see what you write here. If you gain endorsements, you may write them in your statement as they will not appear on the ballot itself.

Campaigning Regulations

The Elections Commission defines campaigning as "an active, deliberate attempt to engage in communication that is intended to influence the recipient's vote." Campaigning before and after the campaigning period for the general election is prohibited. All campaigns must abide by University policies. On-campus, in-person advertising or solicitation of votes is not permitted.

Campaign Social Media Regulations

Every candidate/slate gets to create one personal social media post (no stories or anything else) that they can post across all of their social media at the same time. This social media post can be about their platform or anything else campaign related.

Other than their post, candidates/slates are not allowed to use their personal social media for any campaign related purposes. (including posting, stories, lives)

For social media which are chat centric such as groupme, you can use your personal accounts for campaign related purposes. If you are unsure if a certain social media would fall into this category, please contact the elections commission in advance.

Campaigning over approved campaign social media accounts are not subject to these usage regulations, but still must be within the campaigning period.

Campaign Endorsement Regulations

Candidates may seek the endorsement of student groups/coalitions on campus. Endorsements will not appear on the ballot but candidates can include them in their Voter's Pamphlet statement. Candidates with endorsements must request that the endorsing organization verify with the Elections Commission via email.

Campaign Finance Regulations

Candidates/slates must not spend more than the following on regulated electioneering communications, which includes money spent on flyering, banners, and other advertising. Giveaways are NOT allowed. In the spring, the Elections Commission will reach out to all candidates/slates and ask them to report all campaigning expenditures. Expenditure limits will be enforced to the extent practicable. In recognition of the effects of COVID-19 on many people's finances, we are limiting campaign expenditures to the amount we are able to provide through public financing.

Note of Public Financing

Due to budget constraints this year, the ASSU has budgeted accordingly for each race. The money will be equally divided between all the candidates running.

- Class Presidents (each year) -\$200
- Executive Candidate Slates - \$1000
- Undergraduate Senate and GSC combined - \$3,100

Policy Violations

Election regulations ensure integrity and fairness in the electoral process. Candidates and voters are encouraged to report policy violations to the Elections Commission when they arise. Candidates will be notified of their potential policy violation as soon as permissible, and will be provided 24 hours to respond to the complaint.

After the first violation, the Elections Commission will investigate whether or not the violation has given the slate an indelible advantage in the election. If the Commission and the candidate/slate can correct the violation, the candidate/slate will be given a warning, and the Commission will release a public statement outlining the violation and corrective measures taken. Any further violations will result in expulsion from the election. If the Commission and the candidate/slate cannot correct for the violation, the candidate/slate will face expulsion from the election.

General Elections

The Elections Commission uses the Qualtrics platform for our ballot system. We will email individualized links to personal ballots to every eligible student voter. The General Elections will be open from April 08-09, 2021.

Results

The Elections Commission will release preliminary election results online at elections.stanford.edu on April 10, 2021. These results are preliminary in the sense that they require confirmation by both the current Senate and GSC the following week to finalize the results.

ASSU EXECUTIVE

Elected as a slate, the Executive President and Vice President are the most direct link from Stanford Students to university faculty and administration. Their job is to represent the student body in meaningful ways to university administration, through policy creation and enforcement and advocacy for student issues. Graduate students and undergraduate students can be eligible to form an Executive Slate since the Executive represents both student populations.

Voting Procedure: Rank choice voting

Elections (from ASSU Constitution, Art. III, Sec 3)

1. Candidates for the positions of President and Vice President of the Association shall run for the positions in two-person slates. Each Member of the Association shall cast one vote for the President-Vice President slate of his or her choice.
2. Provisions for nominations shall be specified in the Association By-Laws. In all cases, each slate of candidates shall include exactly two members, with one candidate specifically designated as the candidate for President and the other specifically designated as the candidate for Vice President. In no case may a single member of the Association simultaneously run for election as a member of two slates. Each slate shall be identified by the first and last name of its candidate for President.
3. The President and the Vice President shall be elected by a majority of the Association voting in the Association Spring Quarter General Election.
4. Should no slate of candidates receive a majority of the votes in the Association Spring Quarter General Election, the winner will be decided by the standard "Instant Runoff Voting" procedure.
5. No member of the Association who has served previously as President of the Association for longer than four months shall be eligible to run for that office.
6. The terms of the President and Vice President of the Association shall end at a date specified in the Association By-Laws or 14 days before the end of the spring quarter after the Association has elected another President and Vice President of the Association.
7. The President and/or Vice President of the Association may be removed by a four-fifths vote of each Association legislative body.

UNDERGRADUATE SENATE

The Senate is composed of 15 representatives, all undergraduate students who will remain registered for the following school year (i.e., 2020-2021). They serve as half of the legislative branch of the ASSU. They come from a wide variety of majors, class years, and backgrounds.

Voting Procedure:

For election purposes, the Senate is divided into an 'Upperclass' district and the 'At-Large' district. This allows the top three candidates who are upperclass (non-frosh) to be elected separately from the rest of the candidates. See [By-Laws](#) of the Undergraduate Senate, Article II, Section 1A.

Elections (from ASSU Constitution, Art. II, Sec. 3)

1. The fifteen members of the Undergraduate Senate shall be elected from and shall represent the undergraduate population.
2. Each member of the undergraduate population voting may cast one vote for as many Undergraduate Senate seats as are assigned to the undergraduate population.
3. The candidates equal in number to the number of available Undergraduate Senate seats who receive the largest number of votes shall become members of the Undergraduate Senate.
4. If at any time more than one-third of the Undergraduate Senate seats are vacant, the Undergraduate Senate shall immediately call a special election to fill all vacant seats.

GRADUATE STUDENT COUNCIL

The GSC is composed of 15 representatives, all graduate students who will remain registered for the following school year (i.e., 2021-2022). They serve as half of the legislative branch of the ASSU. The 15 voting members are chosen from all schools across campus in an attempt to represent the interests of all Stanford graduate and professional students.

Voting Procedure:

The GSC election utilizes a district system, representing each of the major schools at Stanford. Candidates can declare their intent to run 'At-Large' or as part of their respective districts. All candidates who run within a specific district will have the choice to run in the at-large election as well or opt out.

GSC members are elected in the following districts:

- Graduate School of Business: 1 member
- School of Earth Sciences: 1 member
- Graduate School of Education: 1 member
- School of Engineering: 2 members, who must be from different departments
- School of Humanities and Sciences, Humanities: 1 member
- School of Humanities and Sciences, Natural Sciences: 1 member
- School of Humanities and Sciences, Social Sciences: 1 member
- Law School: 1 member
- School of Medicine: 1 member
- Members-at-large, chosen from the entire graduate population: 5 members

Besides these voting members, all graduate students are members of the GSC and can voice their opinions at meetings.

Elections (from ASSU Constitution, Art. II, Sec. 4)

1. The fifteen elected members of the Graduate Student Council shall be elected from one or more districts of the graduate population and shall represent the members of that district.
2. The Graduate Student Council may redistrict seats for its elected members, so long as they are based on an equitable apportionment amongst the graduate population.
3. Each member of the graduate population voting may cast one vote in each district to which s/he belongs for each of as many Graduate Student Council seats are assigned to that district.
4. In each district, the candidates equal in number to the number of Graduate Student Council seats assigned to that district who receive the largest number of votes shall become elected members of the Graduate Student Council.
5. No member of the Association shall vote in a district of which s/he is not a member.
6. If at any time a district has a vacant seat, the Graduate Student Council shall immediately act to fill it, by a procedure specified in the Graduate Student Council's By-Laws. New members of the

Graduate Student Council resulting from this procedure shall be considered elected members for all intents and purposes.

CLASS PRESIDENTS

Each Class President Slate (Sophomore, Junior, and Senior) represents the concerns and needs of its class by providing programming and advocacy on issues pertaining to its respective class. Examples include planning class formals, holding alumni mentoring events, and class spirit activities.

Voting procedure: Rank Choice Voting

Sophomore Class Presidents

Advisor: Snehal Naik (svnaik@stanford.edu)

Slate size: 4 rising sophomores

Junior Class Presidents

Advisor: Snehal Naik (svnaik@stanford.edu)

Slate size: 5-6 rising juniors

Senior Class Presidents

Advisor: Sashaun Wood (sashaun@stanford.edu)

Slate size: 4 rising seniors

CONTACT INFORMATION

2020-2021 ASSU Elections Commission

Elections Commissioner - Edwin Ong (edwinong@assu.stanford.edu)

Assistant Elections Commissioner, UGS & Class Presidents - Cameron Ehsan (cehsan@stanford.edu)

Assistant Elections Commissioner, GSC & Annual Grants - Qi Han (qihan96@stanford.edu)

Assistant Elections Commissioner, Community Engagement, Student Outreach, & Executive Elections - Victoria Hsieh (vhsieh02@stanford.edu)