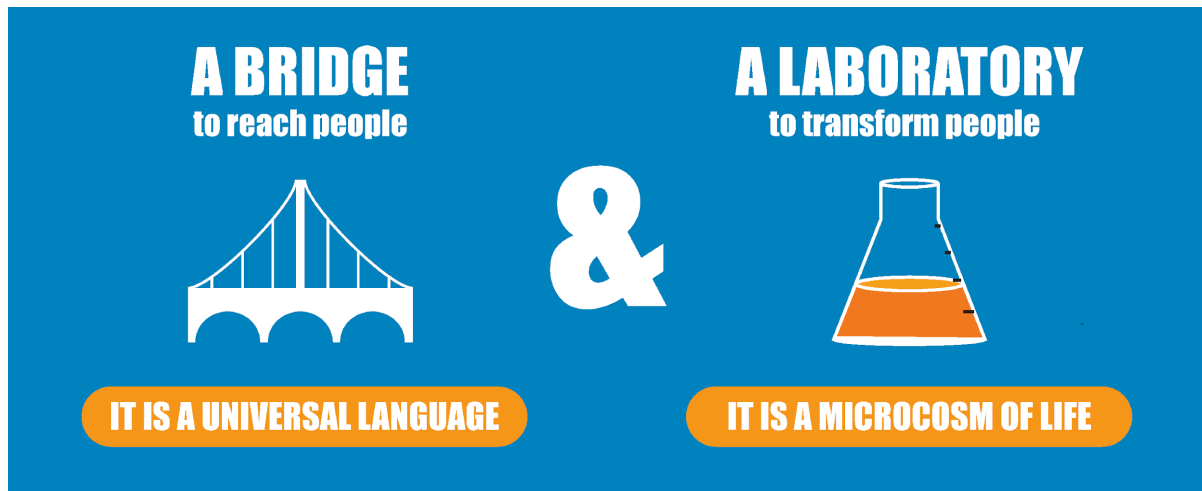


Why does CEDE Sports consider sports to be both a Bridge and a Laboratory?



WHY IS IT GOOD AS A BRIDGE?
IT CROSSES ALL BARRIERS

WHY IS IT GOOD AS A LABORATORY?
IT REVEALS THE HEART

www.csesports.org

Bridges Connect | A bridge connects two things that are separated in some way. As a universal language, sports allow us to cross all barriers and connect with people regardless of age, gender, ethnicity, religious beliefs, and more. When we, as believers, use sports as a bridge, the unconverted have an arena of regular observation to cast down the stereotypes they hold about us Christians. By letting them to get close to us, the unconverted find we are actually *like* them in many ways.

Laboratories Reveal | A laboratory is a place where you conduct experiments, observe, and analyze in a safe and controlled environment. Sports are heralded for the opportunity they provide to build character in a “life laboratory”. Research over the last 20 years validates this truth. But there is a problem. That same research shows the experiments being run in this “life laboratory” are producing the wrong kind of character.

At CEDE Sports, we believe the perfect place for us to show the unconverted how we are *unlike* them is through sports. When we tear down the idol of sports in our hearts, when we play for the glory of God rather than our glory, when we make it our goal to show God off in the way we play, the unconverted will see something very different from themselves and begin to transform their thinking.

This difference goes far beyond outer behavior like pointing to the sky when something good happens. It comes from deep within the heart of a redeemed person who understands how to exemplify his redemption through the way he plays, coaches and spectates sports.

CEDE Sports teaches sports ministries in local churches what it means to be Gospel-Centered and how to effectively use the tool of sports as a bridge (like) for the redemption of people and as a laboratory (unlike) for the redemption of sports.