

REPRODUCTIVE SYSTEM OF CHICKENS

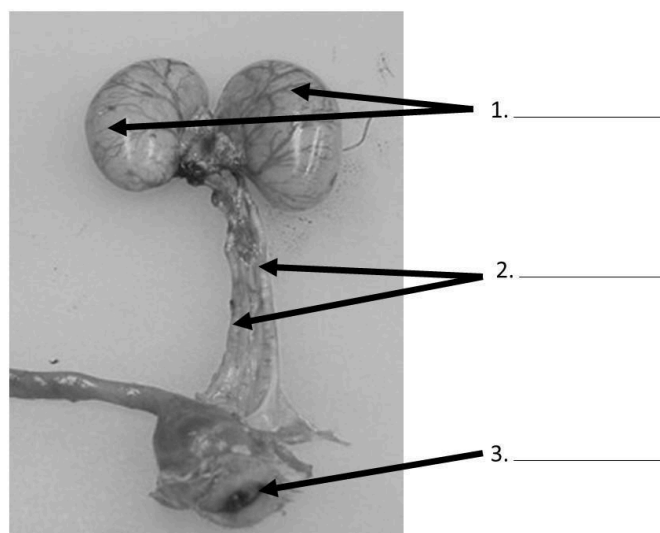
Chose the *BEST* answer:

1. Where does fertilization take place in chickens?
 - a. In the ovary
 - b. In the infundibulum
 - c. In the uterus
 - d. In the nest after the egg is laid
2. What hormones are produced by the hypothalamus?
 - a. FSH
 - b. LH
 - c. Gonadotropin-releasing hormones
 - d. Gonadotropins
3. Where are sperm produced?
 - a. Ovary
 - b. Testes
 - c. Kidney
 - d. None of the above
4. What stimulates chickens to start laying eggs?
 - a. Introduction of a male into the flock
 - b. Age
 - c. Day length
 - d. Amount of food available
5. Where are sperm formed in roosters?
 - a. Ovary
 - b. Testes
 - c. Gizzard
 - d. Liver
6. What is the maximum number of eggs a hen can lay in a day?
 - a. 1
 - b. 4
 - c. 12
 - d. 16



7. What gland in the brain of a chicken detects the changes in the number of hours of light in a day?
 - a. Ovary
 - b. Hypothalamus
 - c. Pituitary
 - d. Pineal gland
8. What hormone stimulates the development of the oviduct in female chickens?
 - a. Estrogen
 - b. Progesterone
 - c. Oxytocin
 - d. Gonadotropin releasing hormones
9. What hormone results in broodiness in laying hens?
 - a. Estrogen
 - b. Progesterone
 - c. Prolactin
 - d. Oxytocin
10. Where is albumen added to the egg in a laying hen?
 - a. Infundibulum
 - b. Uterus
 - c. Vagina
 - d. Magnum

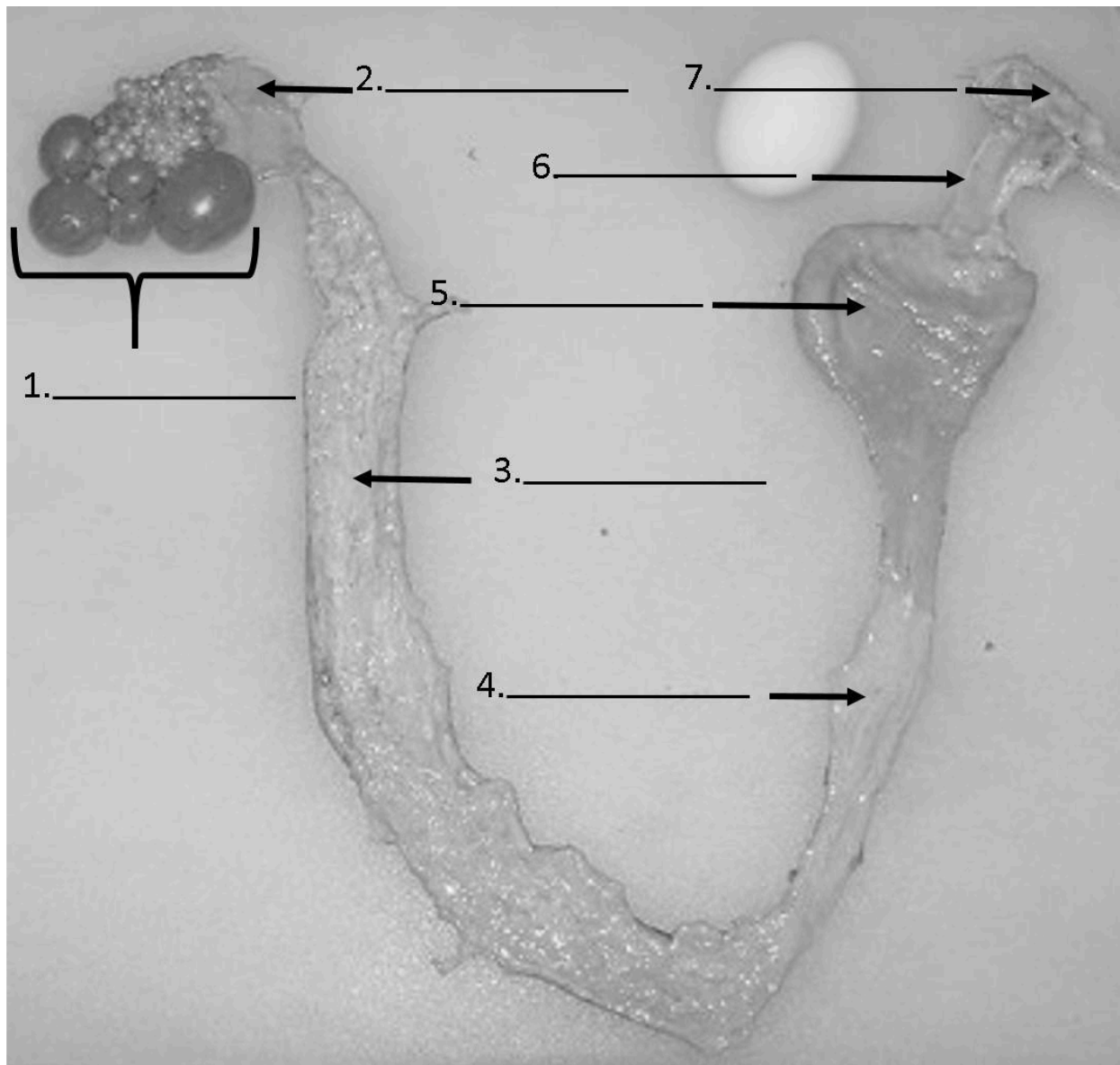
Identify the parts of the male reproductive tract:





2017 © Kentucky Poultry Federation in partnership with the University of Kentucky and the Kentucky Agriculture and Environment in the Classroom. This worksheet may be duplicated for educational purposes so long as the copyright statement is included. www.kypoultry.org

Identify the parts of the male reproductive tract:



REPRODUCTIVE SYSTEM OF CHICKENS – Answer key

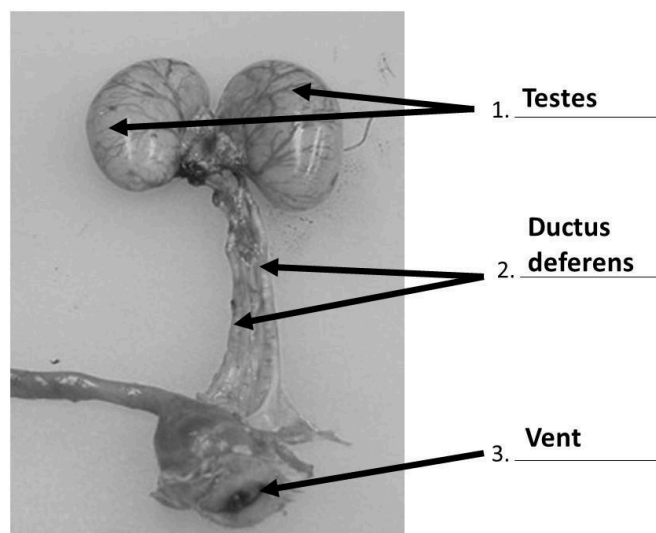
Chose the *BEST* answer:

1. Where does fertilization take place in chickens?
 - a. In the ovary
 - b. In the infundibulum**
 - c. In the uterus
 - d. In the nest after the egg is laid
2. What hormones are produced by the hypothalamus?
 - a. FSH
 - b. LH
 - c. Gonadotropin-releasing hormones**
 - d. Gonadotropins
3. Where are sperm produced?
 - a. Ovary
 - b. Testes**
 - c. Kidney
 - d. None of the above
4. What stimulates chickens to start laying eggs?
 - a. Introduction of a male into the flock
 - b. Age
 - c. Day length**
 - d. Amount of food available
5. Where are sperm formed in roosters?
 - a. Ovary
 - b. Testes**
 - c. Gizzard
 - d. Liver
6. What is the maximum number of eggs a hen can lay in a day?
 - a. 1**
 - b. 4
 - c. 12
 - d. 16



7. What gland in the brain of a chicken detects the changes in the number of hours of light in a day?
- Ovary
 - Hypothalamus
 - Pituitary
 - d. Pineal gland**
8. What hormone stimulates the development of the oviduct in female chickens?
- a. Estrogen**
 - Progesterone
 - Oxytocin
 - Gonadotropin releasing hormones
9. What hormone results in broodiness in laying hens?
- Estrogen
 - Progesterone
 - c. Prolactin**
 - Oxytocin
10. Where is albumen added to the egg in a laying hen?
- Infundibulum
 - Uterus
 - Vagina
 - d. Magnum**

Identify the parts of the male reproductive tract:





2017 © Kentucky Poultry Federation in partnership with the University of Kentucky and the Kentucky Agriculture and Environment in the Classroom. This worksheet may be duplicated for educational purposes so long as the copyright statement is included. www.kypoultry.org

Identify the parts of the male reproductive tract:

