



Office of Information Technology

Panther User Manual

Table of Contents

Introduction	1
Access Using PuTTY (Windows)	2
Download and install PuTTY	2
If PuTTY has already been installed	4
Access Using Terminal	5
Access Using FileZilla FTP Client	8
Download and Install FileZilla	8
Configuring FileZilla	13
Access Using Notepad++ (Windows)	16
Download and install Notepad++	16
Configuring Notepad++	20
Programming Languages	23
How to Create a Website in Panther	24
Using an SSH Client	24
Using FileZilla FTP Client	27

Introduction

Panther is a UNIX-like system that is offered at Adelphi University. By following this guide, you should be able to successfully connect to the Panther system, log in, and set your account up for basic website creation.

Access Using PuTTY (Windows)

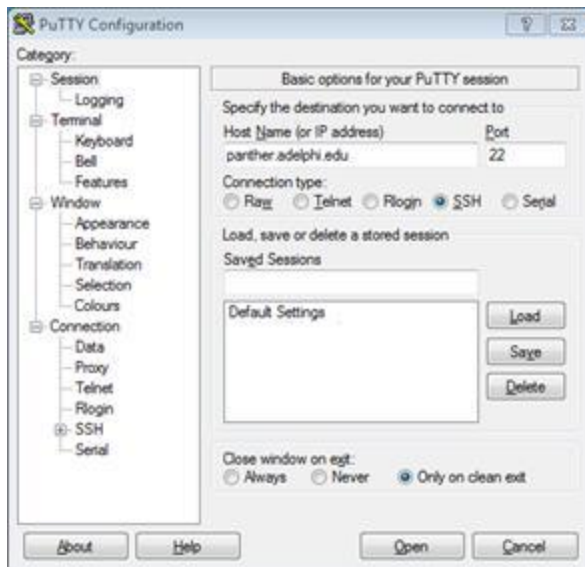
PuTTY is an SSH client for Windows operating systems. You can use PuTTY to connect to Panther using SSH.

Download and install PuTTY

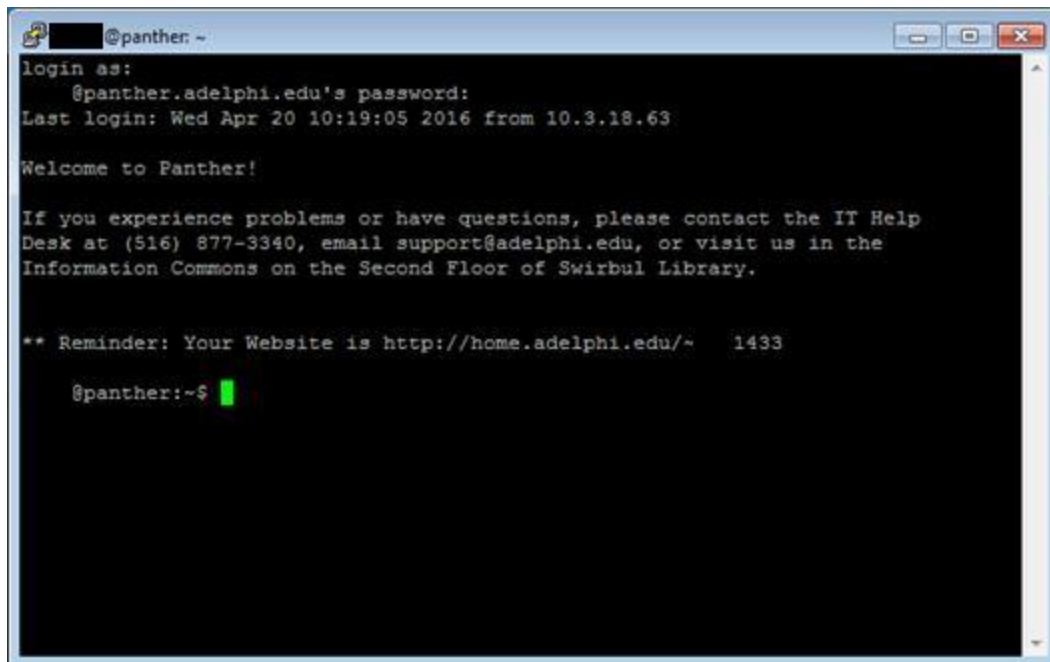
1. PuTTY can be downloaded from here:
<https://www.chiark.greenend.org.uk/~sgtatham/putty/latest.html>
Download putty.exe under Alternative binary files section.
2. Open putty.exe



- Click "Run".



- The "PuTTY Configuration" prompt will appear. Fill it in with:
 - "Host Name" should be: panther.adelphi.edu
 - "Port" should be: 22
 - "Connection type" should be: SSH
- Click Open
- The PuTTY window will appear.
- Enter your eCampus username and password to log in.
Note: Your password will not appear on screen as you type.
- You will be greeted with the welcome message, and you will be ready to use Panther.



If PuTTY has already been installed

1. Click the Start button.
2. Type “putty” into the “Search programs and files” box.

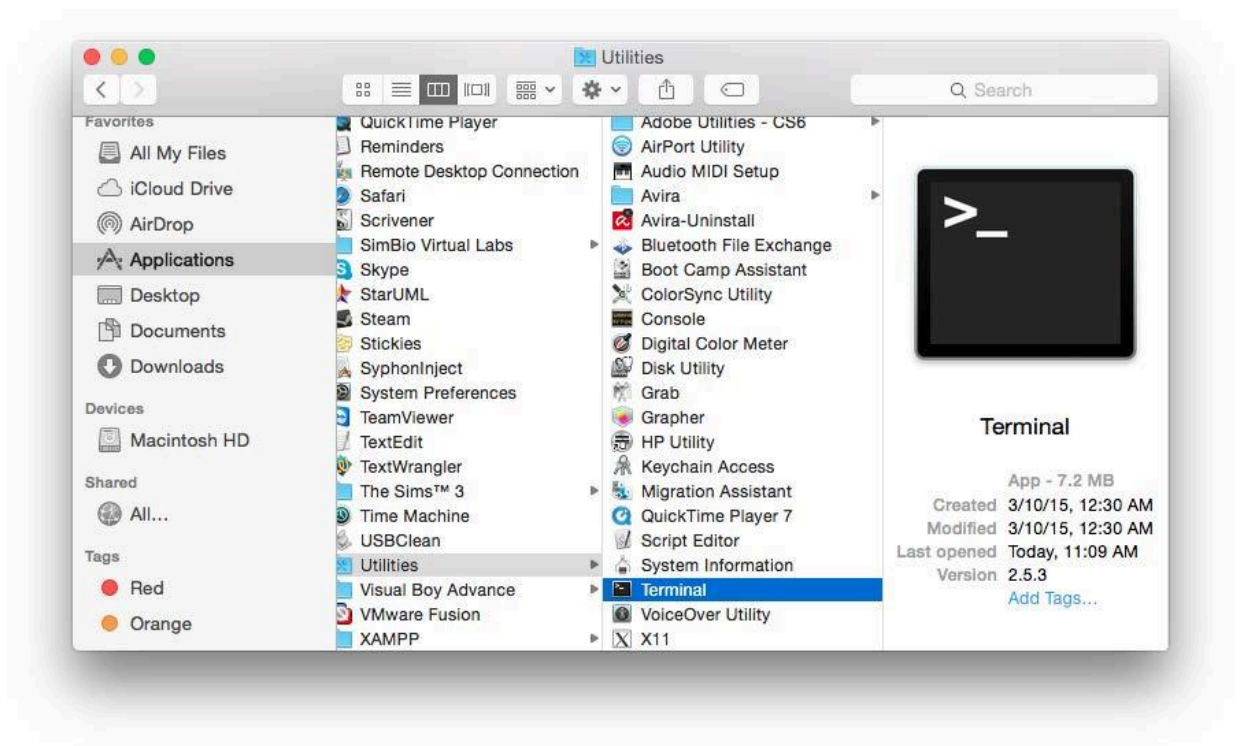


3. Click “PuTTY” to open.

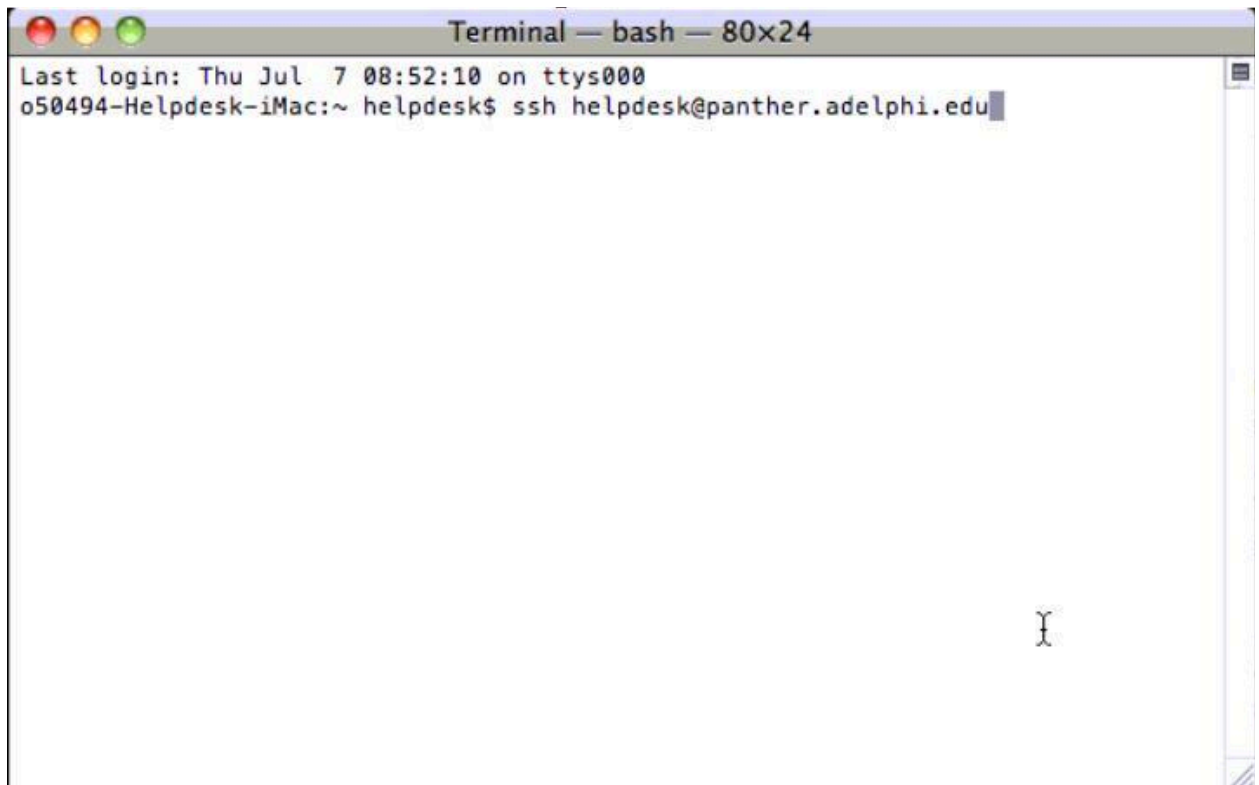
Access Using Terminal

Terminal is a terminal emulator included in the Mac OS X operating system. Terminal can be used to create an SSH connection to Panther.

1. Open Finder.
2. Open the Applications folder.
3. Open the Utilities folder.
4. Double-click on "Terminal".



5. Type “ssh yourusername@panther.adelphi.edu” and press the Return key.



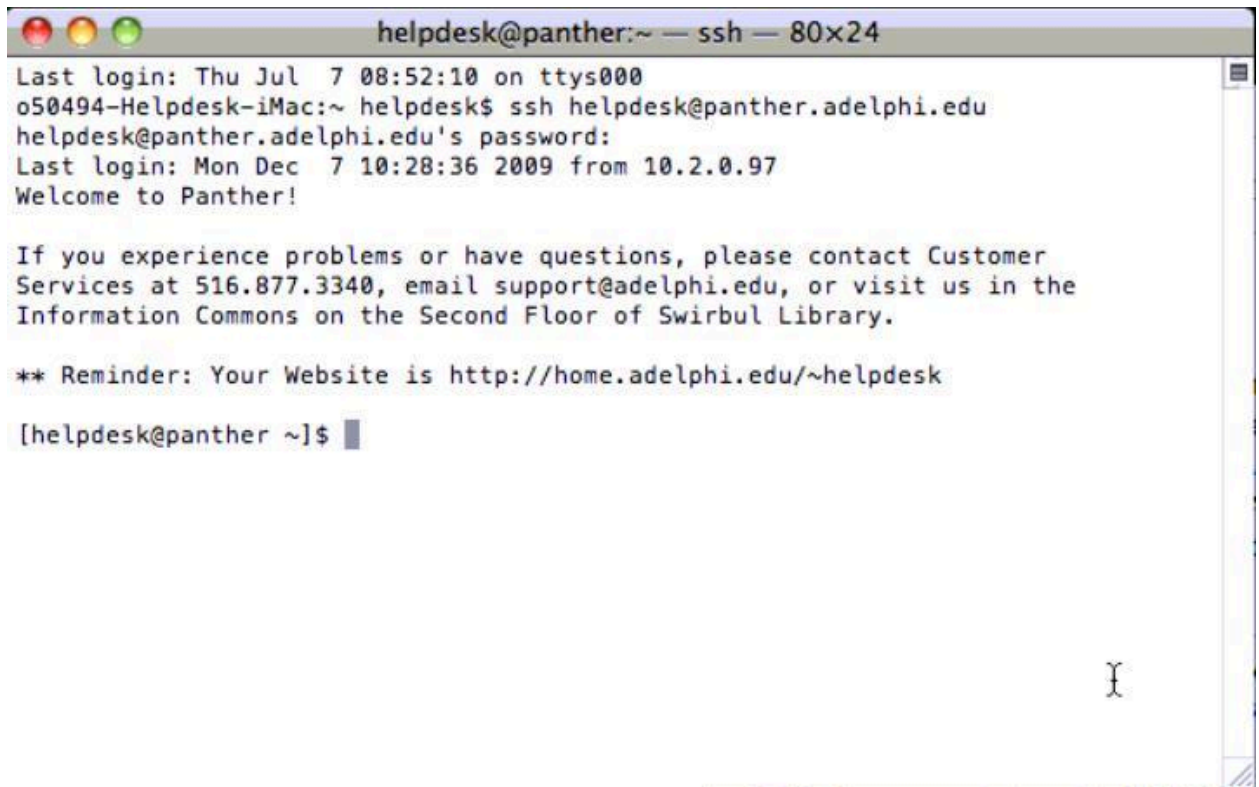
```
Terminal — bash — 80x24
Last login: Thu Jul 7 08:52:10 on ttys000
o50494-Helpdesk-iMac:~ helpdesk$ ssh helpdesk@panther.adelphi.edu
```

6. Type your eCampus password and press the Return key.
Note: Your password will not appear on screen as you type.



```
Terminal — ssh — 80x24
Last login: Thu Jul 7 08:52:10 on ttys000
o50494-Helpdesk-iMac:~ helpdesk$ ssh helpdesk@panther.adelphi.edu
helpdesk@panther.adelphi.edu's password:
```

7. On successful login, the Terminal window will display the welcome message and you will be ready to use Panther.



A screenshot of a macOS Terminal window titled "helpdesk@panther:~ — ssh — 80x24". The window shows the output of an SSH login session. The text displayed is as follows:

```
Last login: Thu Jul 7 08:52:10 on ttys000
o50494-Helpdesk-iMac:~ helpdesk$ ssh helpdesk@panther.adelphi.edu
helpdesk@panther.adelphi.edu's password:
Last login: Mon Dec 7 10:28:36 2009 from 10.2.0.97
Welcome to Panther!

If you experience problems or have questions, please contact Customer
Services at 516.877.3340, email support@adelphi.edu, or visit us in the
Information Commons on the Second Floor of Swirbul Library.

** Reminder: Your Website is http://home.adelphi.edu/~helpdesk

[helpdesk@panther ~]$
```

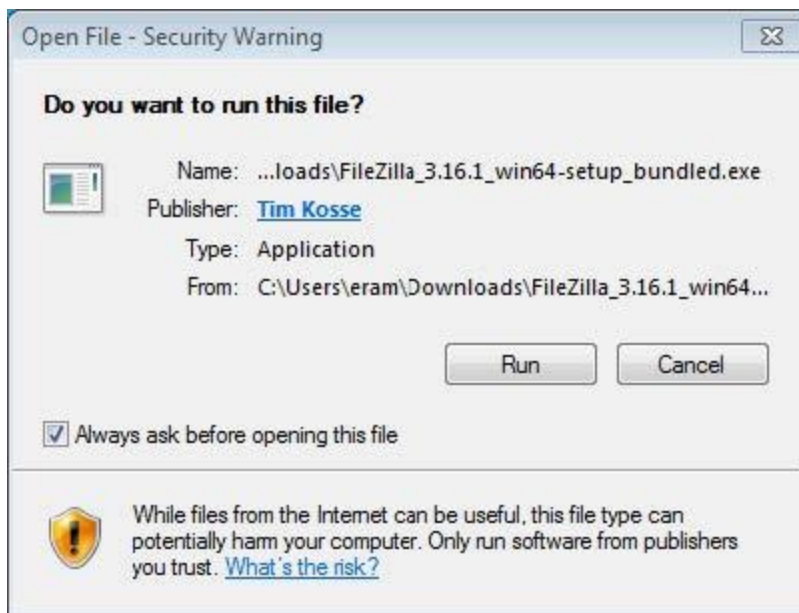
The terminal window has a standard macOS title bar with red, yellow, and green window control buttons on the left. A vertical scrollbar is visible on the right side of the terminal area.

Access Using FileZilla FTP Client

FileZilla Client is a reliable cross-platform SFTP client with useful features and an intuitive interface. You can use this free resource to securely transfer files. FileZilla is open source software distributed under the terms of the GNU General Public License.

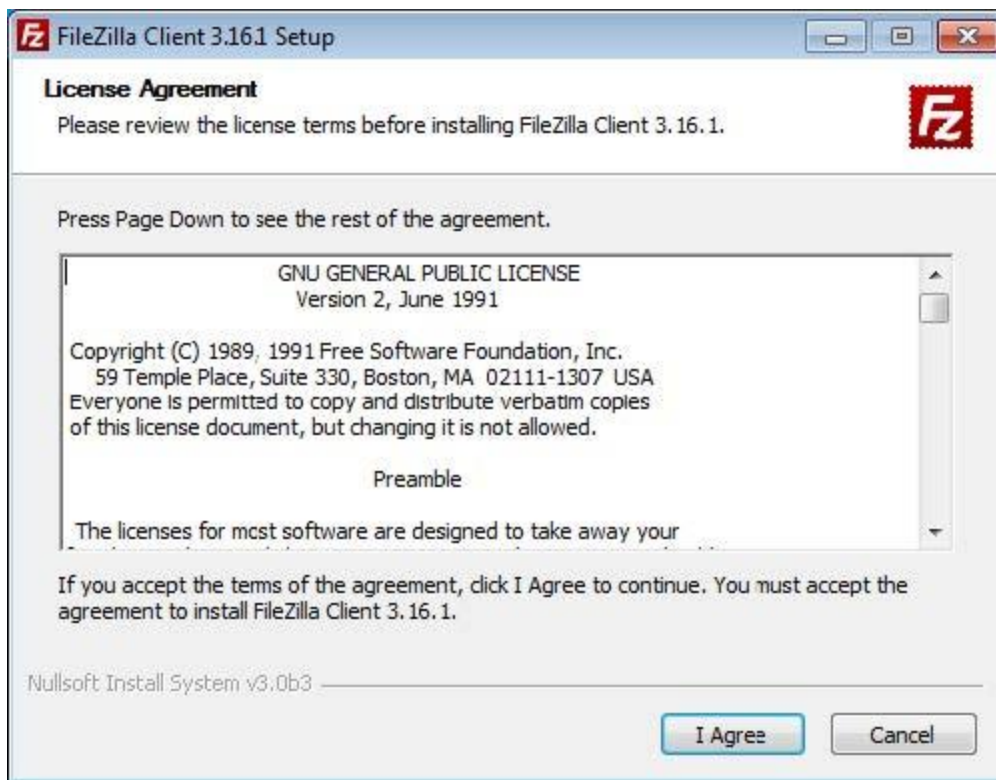
Download and Install FileZilla

1. FileZilla can be downloaded here:
2. Open FileZilla_3.16.1_win64-setup_bundled.exe (the numbers/operating system may be different).



3. Click "Run".
4. If a User Account Control Prompt appears, click "Yes".

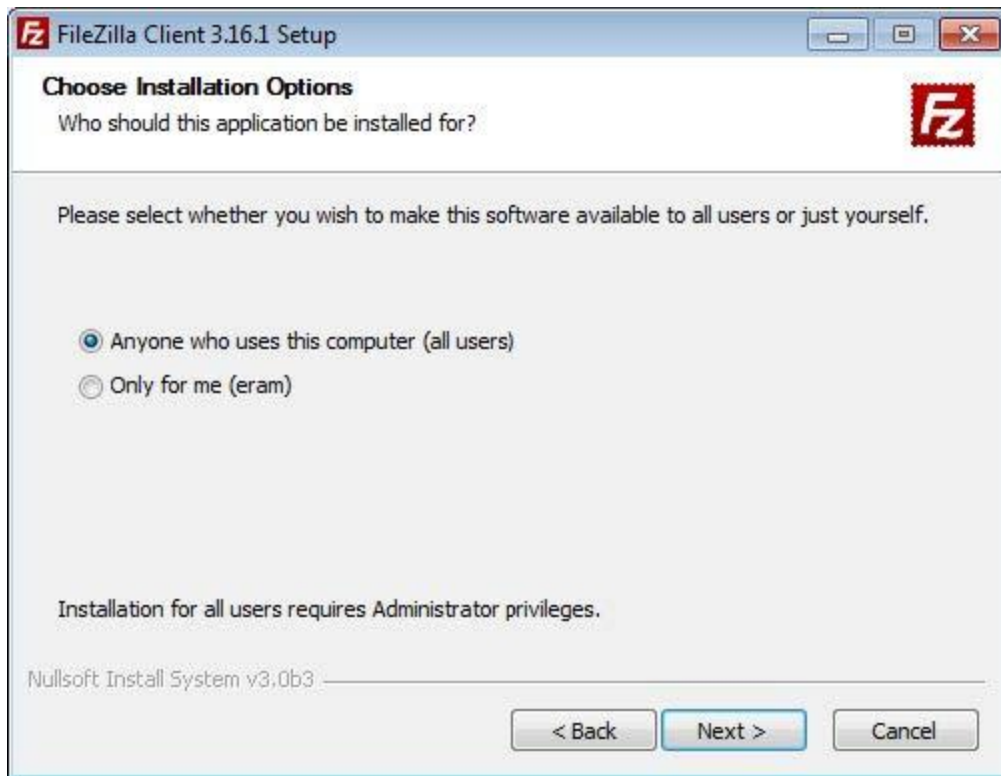
5. Agree to the License Agreement.

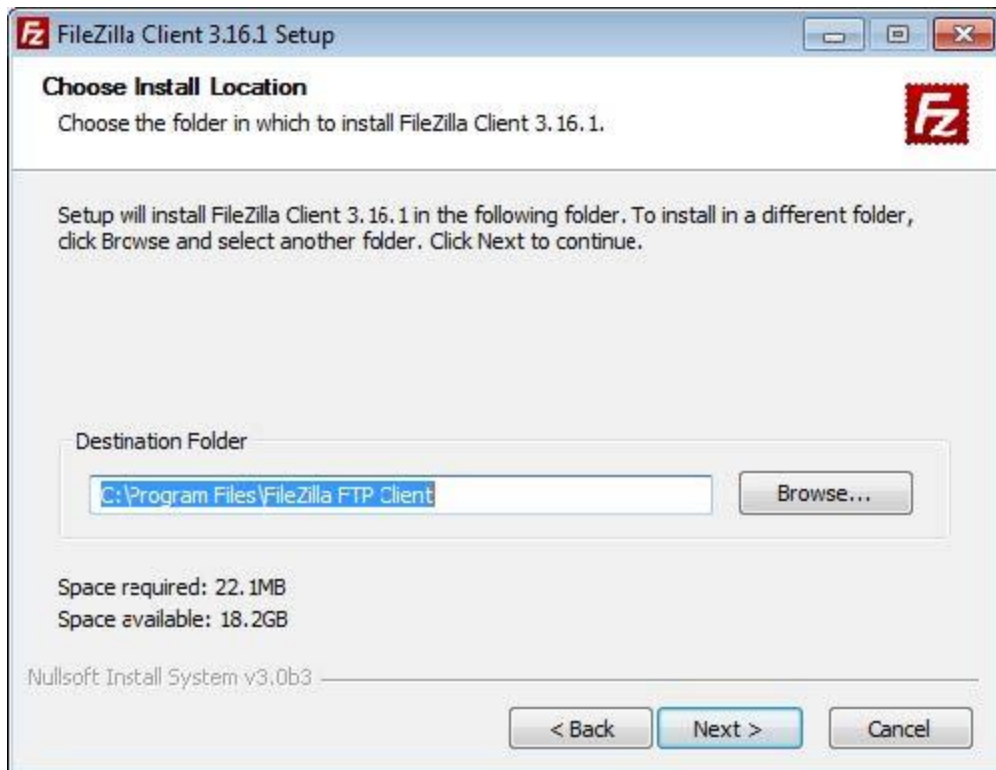
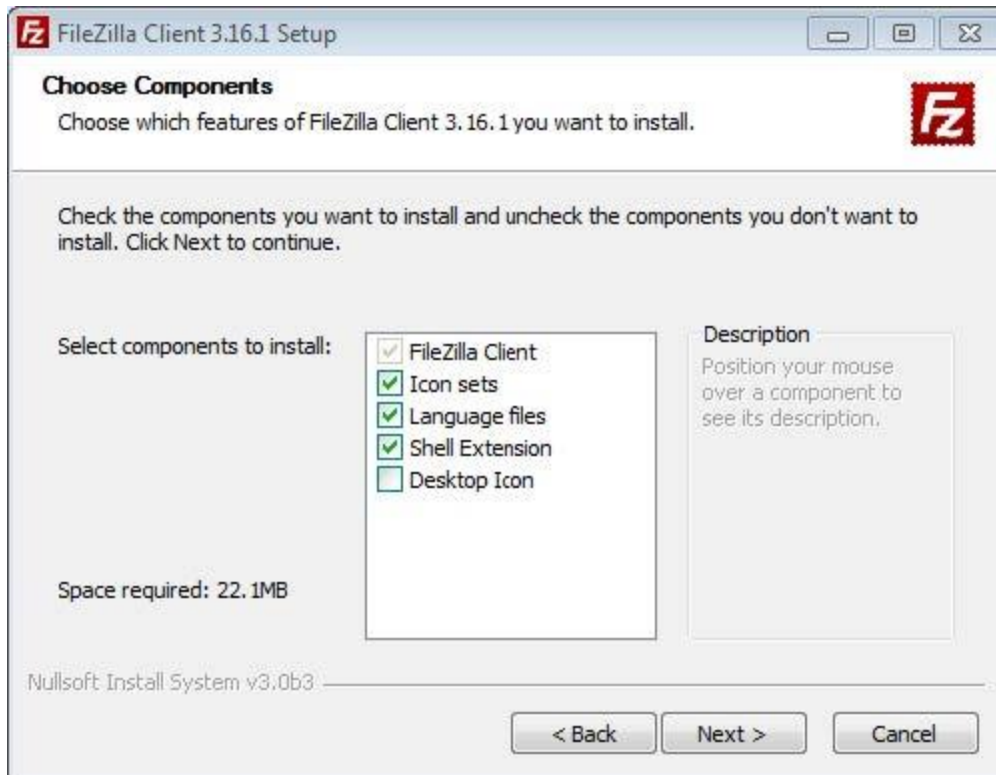


6. Deselect any "Optional Offers" and click "Next".

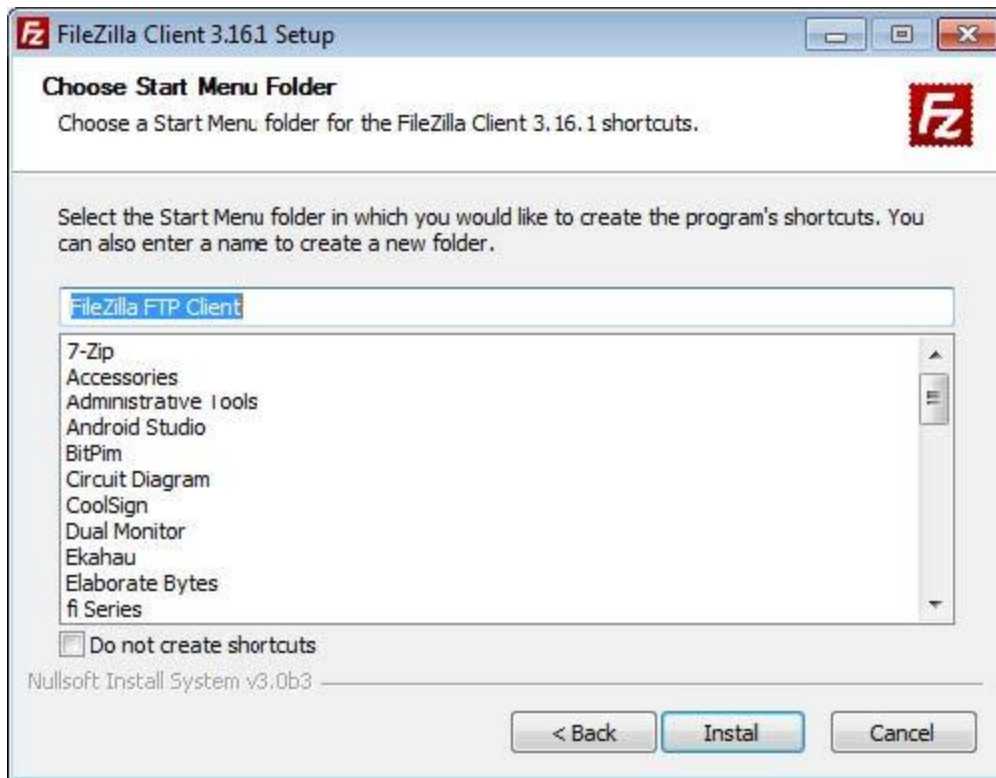


7. Click "Next".

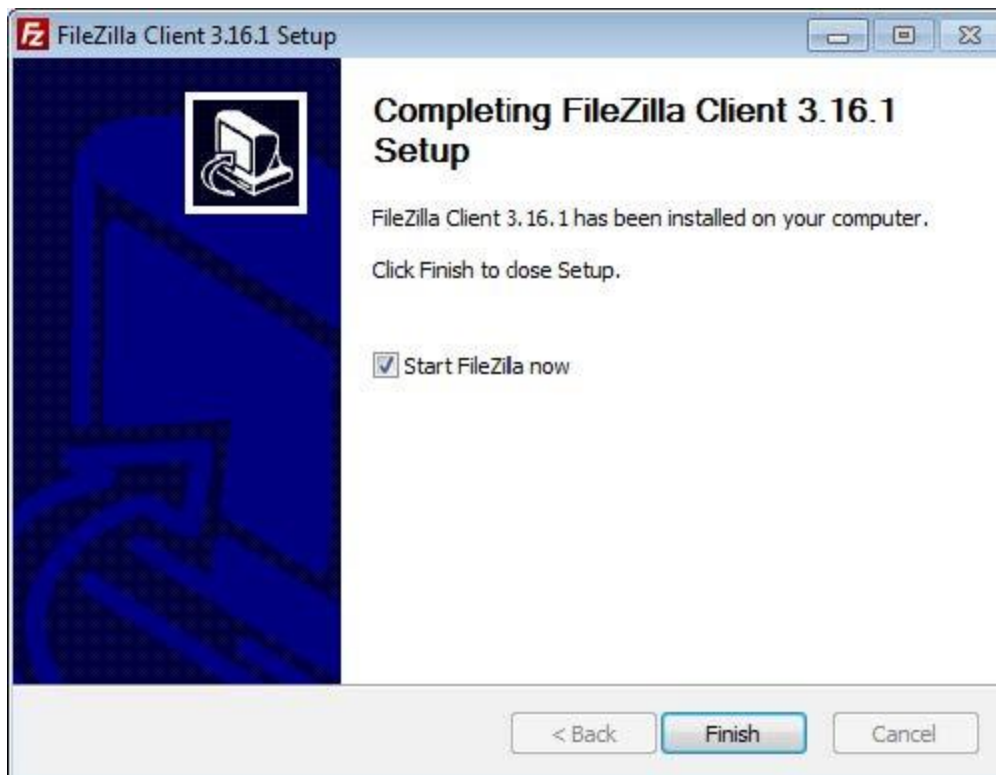




8. Click "Install".

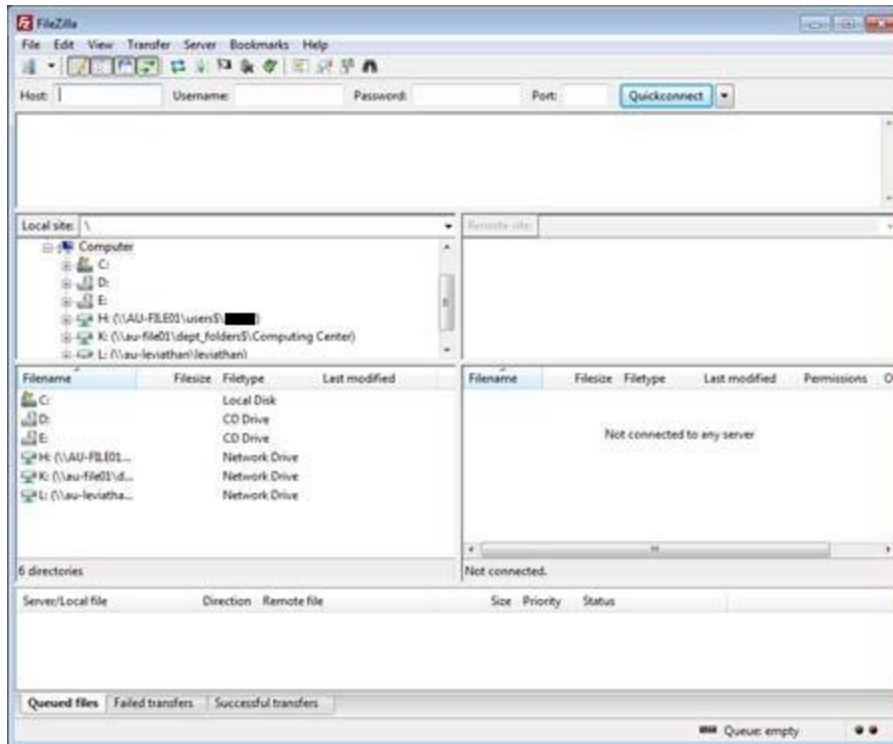


9. Click "Finish".



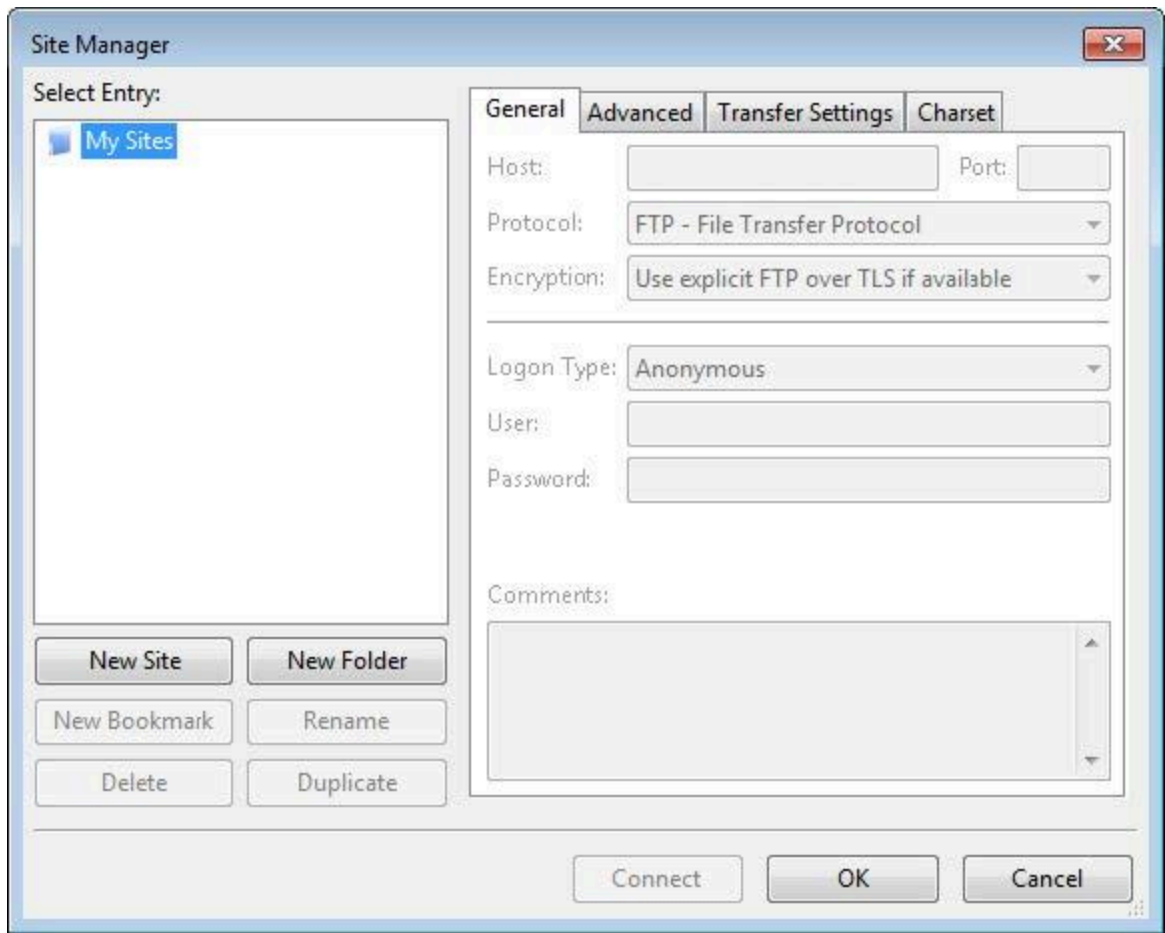
Configuring FileZilla

1. Open FileZilla Client.



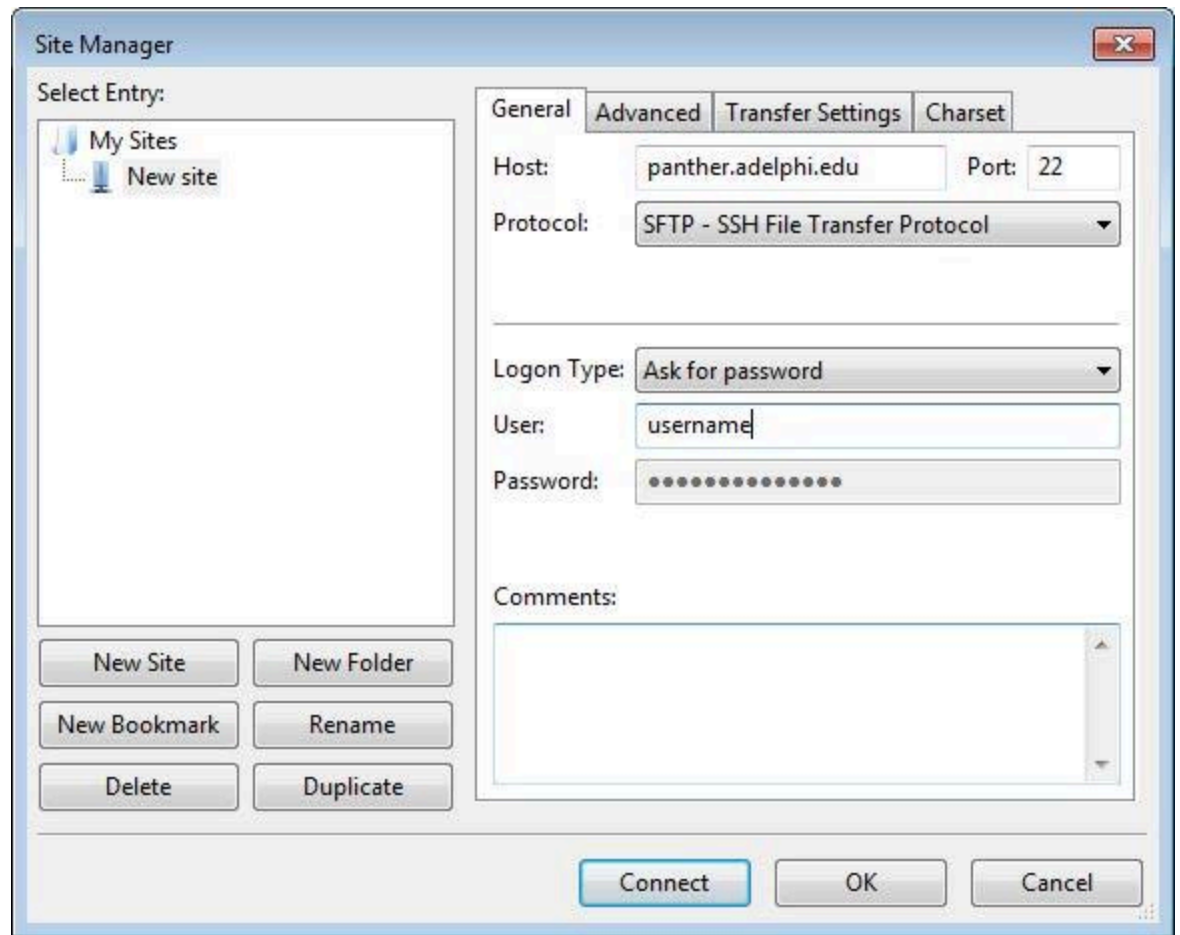
2. Go to “File”, and select “Site Manager”.

3. Click "New Site".



4. Fill in the fields.
 - a. Host: panther.adelphi.edu
 - b. Port: 22
 - c. Protocol: SFTP – SSH File Transfer Protocol
 - d. Logon Type: Ask for password

- e. User: your eCampus username



5. Click "Connect".
6. Enter your eCampus password.



7. If an "Unknown host key" prompt appears, select the checkbox for "Always trust this host, add this key to the cache" and click "OK".
8. Successful connection will result in "Status: Directory listing of "/home/yourhomedirectory" successful" in the top box of the client window.

Access Using Notepad++ (Windows)

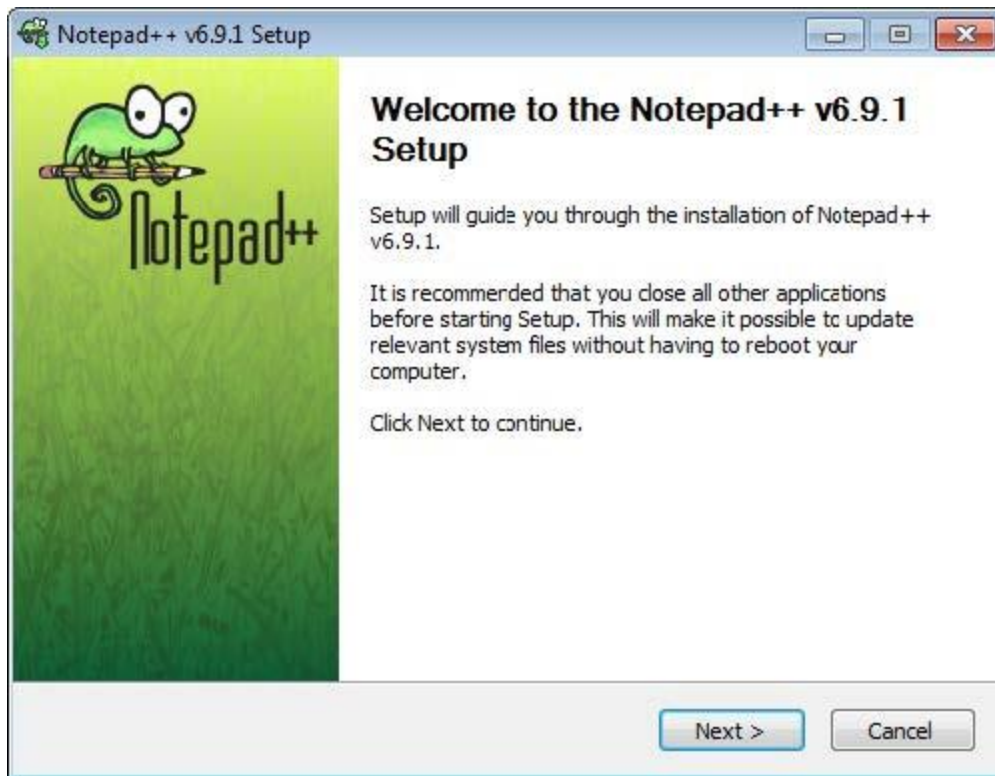
Notepad++ is a source code editor for Windows. It can also make FTP connections to Panther.

Download and install Notepad++

1. Notepad++ can be downloaded from here: <https://notepad-plus-plus.org/download/>
2. Open npp.6.9.1.Installer.exe (the numbers may be different).
3. If a User Account Control Prompt appears, click "Yes".
4. Select "English" and click "OK"



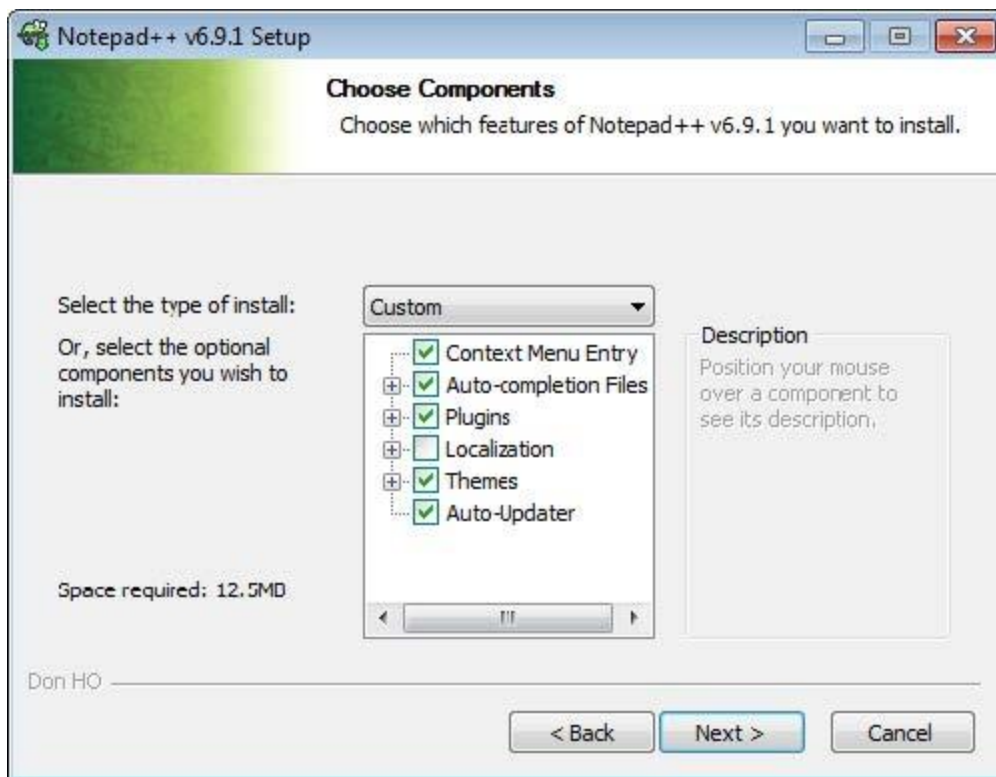
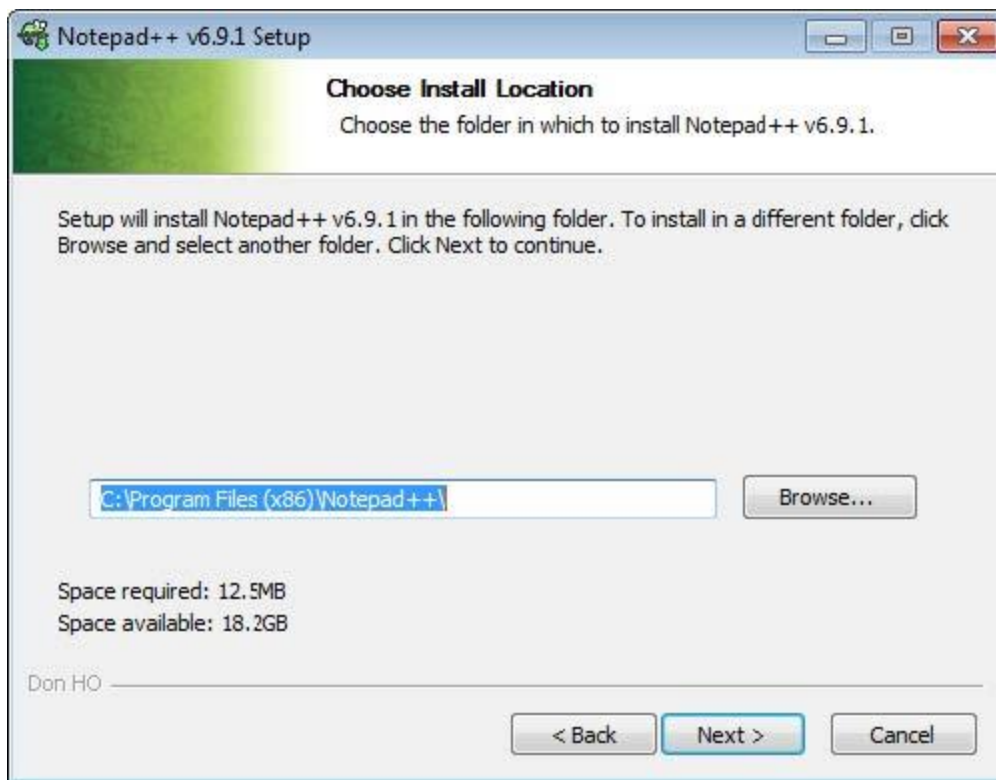
5. Click "Next".



6. Agree to the License Agreement.



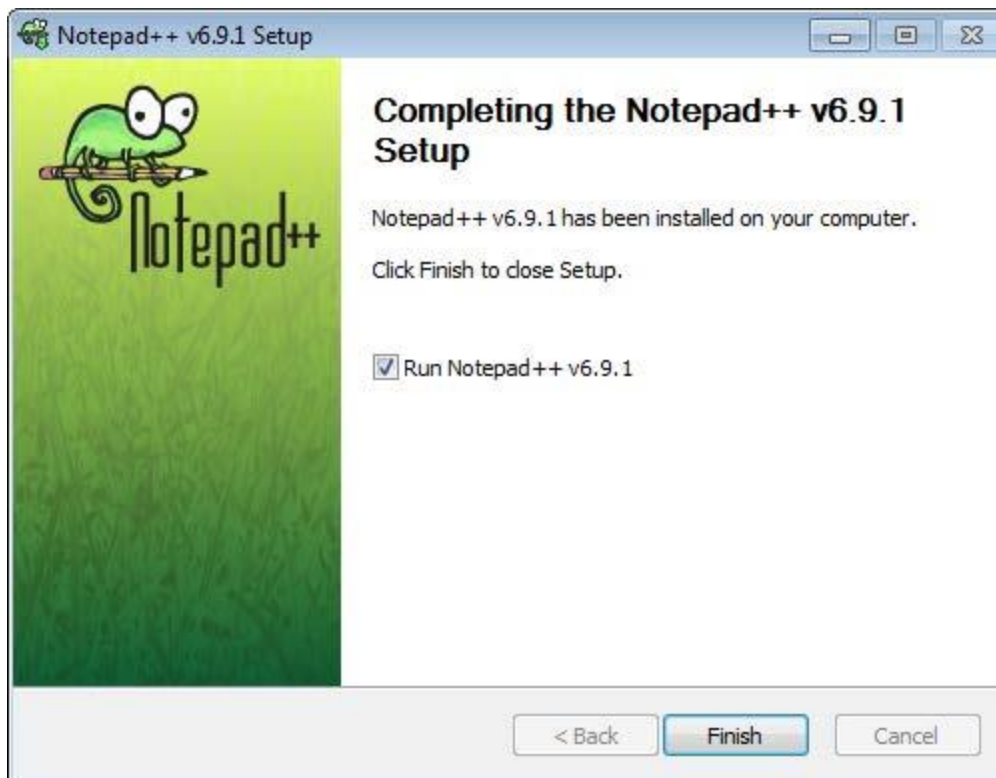
7. Click "Next".



8. Click "Install".

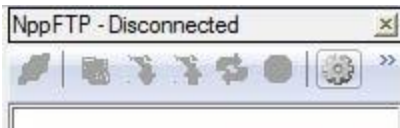


9. Click "Finish".

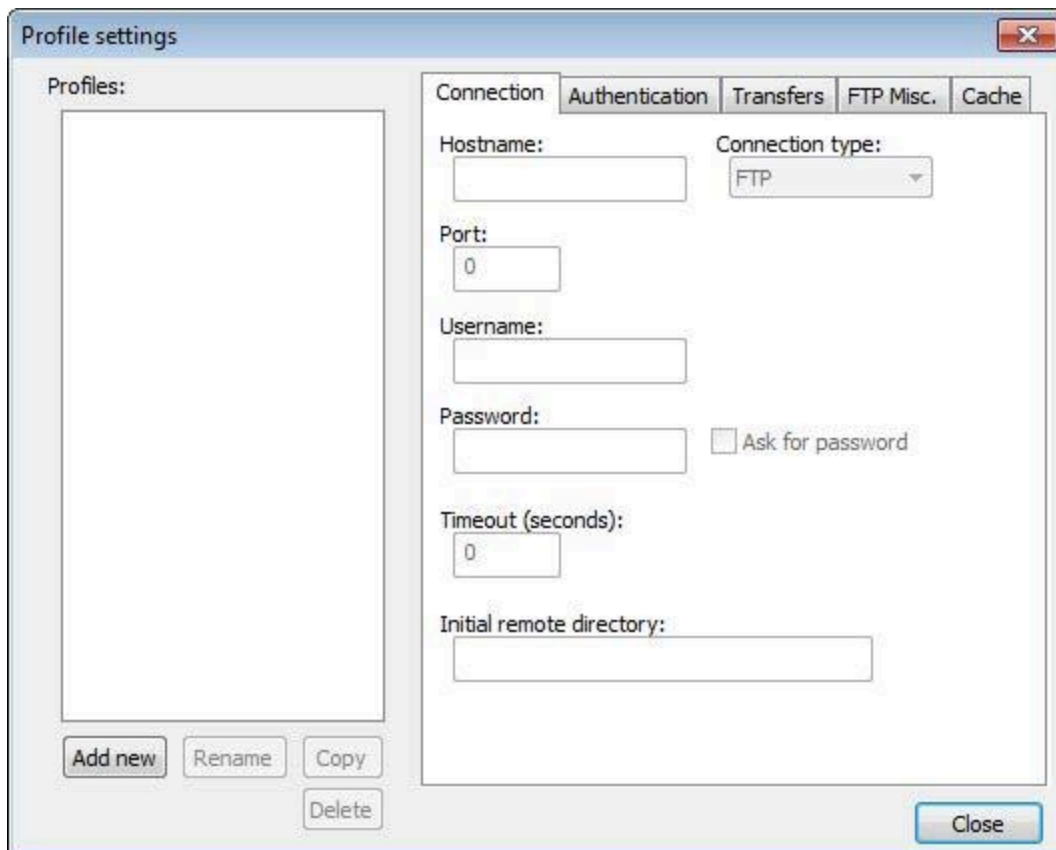


Configuring Notepad++

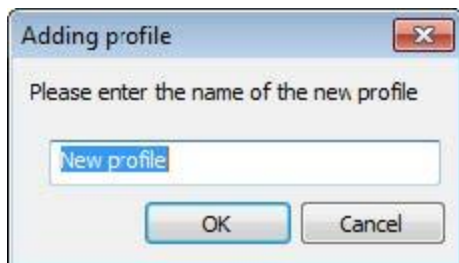
1. In the upper right hand corner of the Notepad++ window, click on the gear icon and select "Profile Settings".



2. Click "Add new".

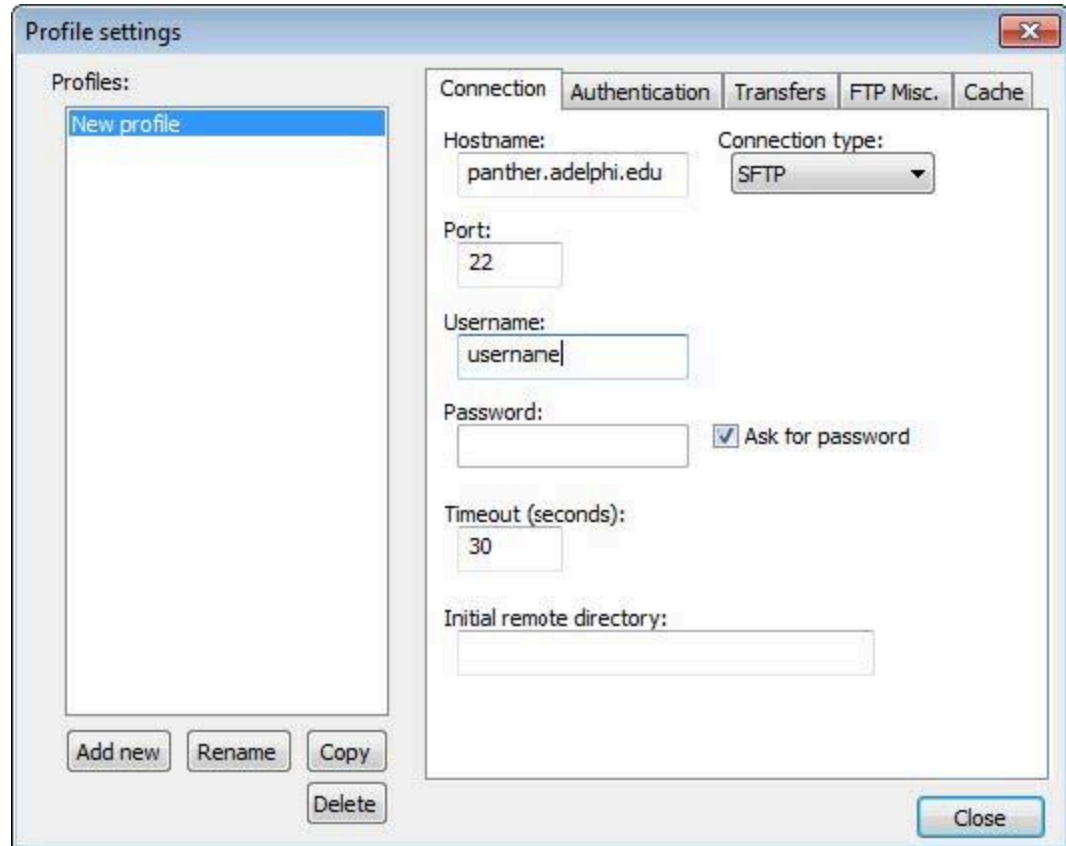


3. Enter a name for the new profile.

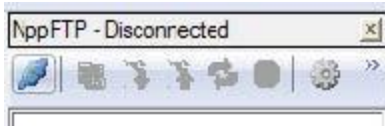


4. Fill in the fields:

- a. Hostname: panther.adelphi.edu
- b. Connection type: SFTP
- c. Port: 22
- d. Username: your eCampus username
- e. "Ask for password" checkbox



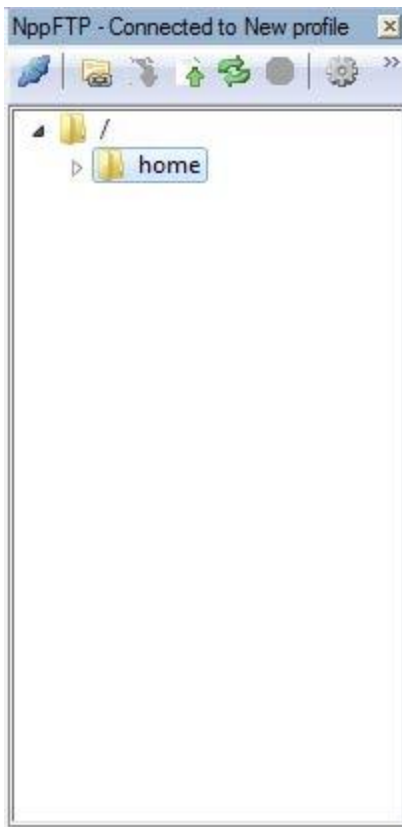
5. Click "Close".
6. Click on the leftmost icon under "NppFTP – Disconnected" and select the name of the profile you created.



7. Enter your eCampus password.



8. If the connection is successful, your home directory will appear in the box below.



Programming Languages

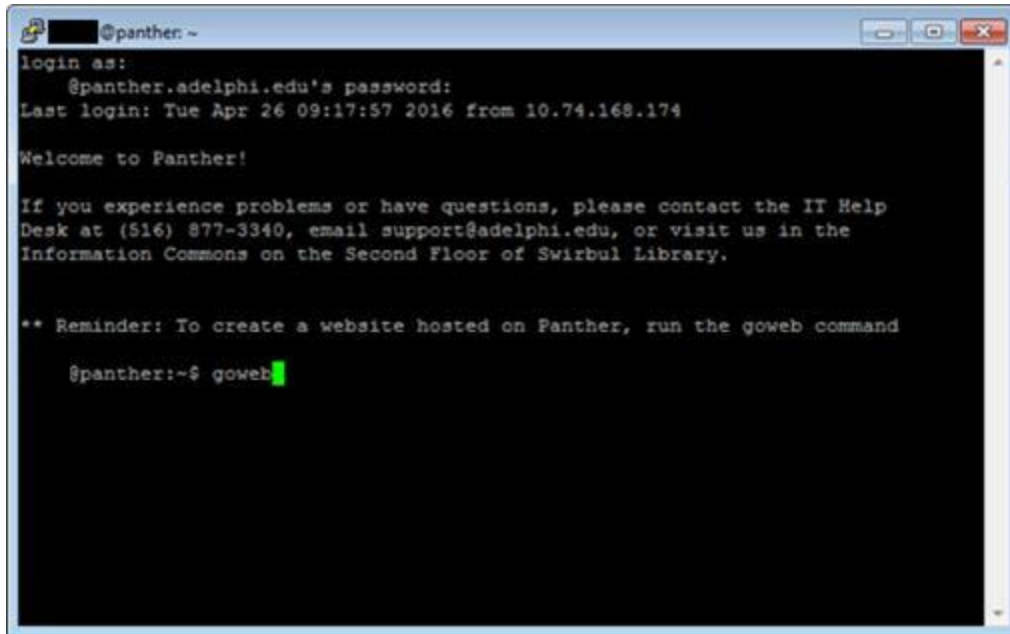
The programming languages available for use in Panther are:

- Java 1.6.0_38
- C++ 4.6.3
- Perl 5.14.2
- Python 2.7
- Python 3.2
- PHP 5.3.10
- Racket

How to Create a Website in Panther

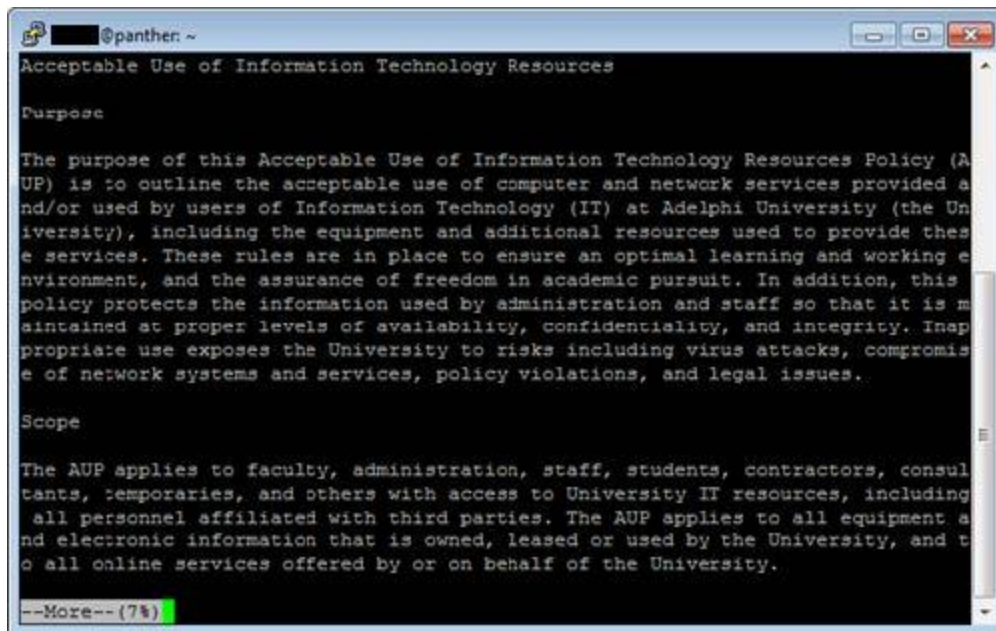
Using an SSH Client

1. Open a SSH connection to Panther (using PuTTY (Windows) or Terminal (Mac OS X)).
2. Log in.
3. Type “goweb” and press the Enter/Return key



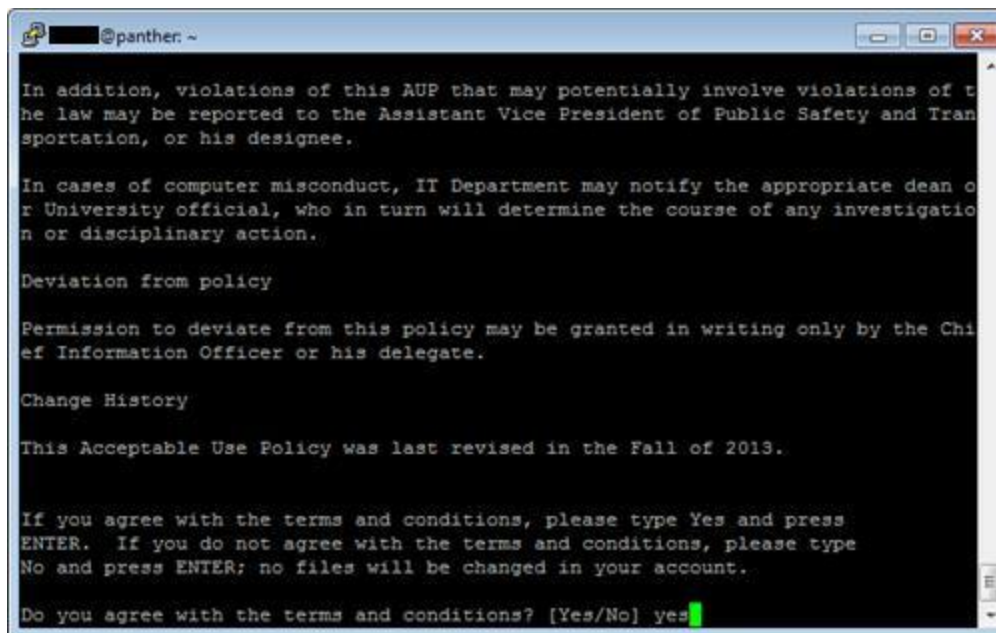
```
@panther: ~  
login as:  
@panther.adelphi.edu's password:  
Last login: Tue Apr 26 09:17:57 2016 from 10.74.168.174  
  
Welcome to Panther!  
  
If you experience problems or have questions, please contact the IT Help  
Desk at (516) 877-3340, email support@adelphi.edu, or visit us in the  
Information Commons on the Second Floor of Swirbul Library.  
  
** Reminder: To create a website hosted on Panther, run the goweb command  
  
@panther:~$ goweb
```


4. Read through the "Acceptable Use of Information Technology Resources" terms. Press the Enter/Return key to read additional lines, or the Space bar to read by page.



```
@panther: ~  
Acceptable Use of Information Technology Resources  
  
Purpose  
  
The purpose of this Acceptable Use of Information Technology Resources Policy (AUP) is to outline the acceptable use of computer and network services provided and/or used by users of Information Technology (IT) at Adelphi University (the University), including the equipment and additional resources used to provide these services. These rules are in place to ensure an optimal learning and working environment, and the assurance of freedom in academic pursuit. In addition, this policy protects the information used by administration and staff so that it is maintained at proper levels of availability, confidentiality, and integrity. Inappropriate use exposes the University to risks including virus attacks, compromise of network systems and services, policy violations, and legal issues.  
  
Scope  
  
The AUP applies to faculty, administration, staff, students, contractors, consultants, temporaries, and others with access to University IT resources, including all personnel affiliated with third parties. The AUP applies to all equipment and electronic information that is owned, leased or used by the University, and to all online services offered by or on behalf of the University.  
  
--More-- (7%)
```

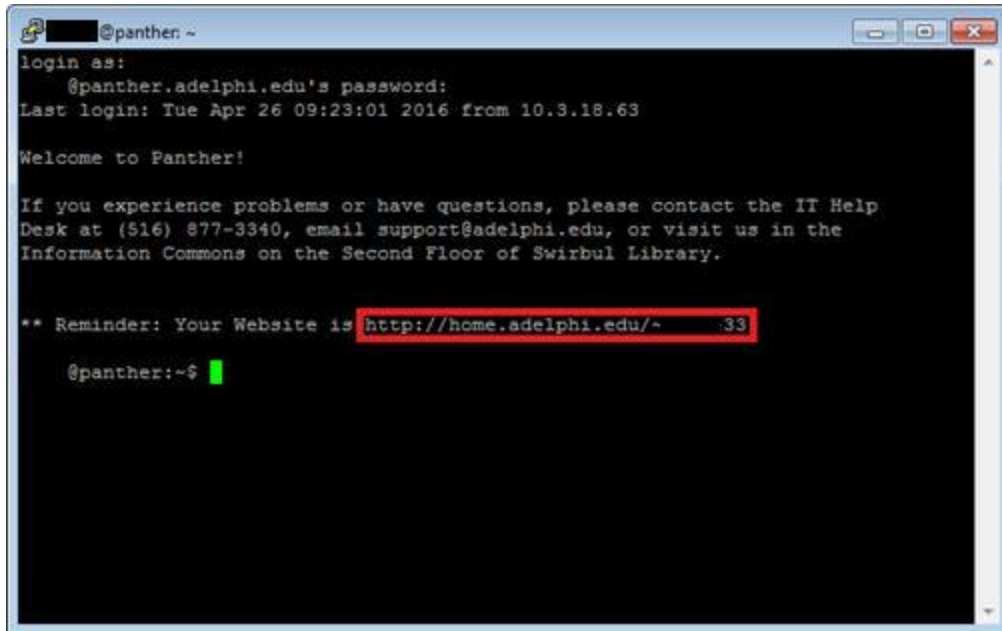
5. Agree to the terms and conditions by typing "yes".



```
@panther: ~  
  
In addition, violations of this AUP that may potentially involve violations of the law may be reported to the Assistant Vice President of Public Safety and Transportation, or his designee.  
  
In cases of computer misconduct, IT Department may notify the appropriate dean or University official, who in turn will determine the course of any investigation or disciplinary action.  
  
Deviation from policy  
  
Permission to deviate from this policy may be granted in writing only by the Chief Information Officer or his delegate.  
  
Change History  
  
This Acceptable Use Policy was last revised in the Fall of 2013.  
  
If you agree with the terms and conditions, please type Yes and press ENTER. If you do not agree with the terms and conditions, please type No and press ENTER; no files will be changed in your account.  
  
Do you agree with the terms and conditions? [Yes/No] yes
```

6. The prompt will display "Creating public_html. . ."
7. You can host your website by creating your website files inside the public_html directory.

8. At the next logon, the greeting will include your website URL.



```
@panther: ~
login as:
@panther.adelphi.edu's password:
Last login: Tue Apr 26 09:23:01 2016 from 10.3.18.63

Welcome to Panther!

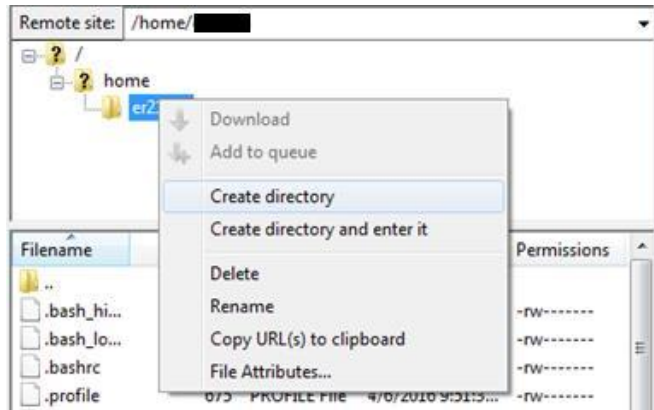
If you experience problems or have questions, please contact the IT Help
Desk at (516) 877-3340, email support@adelphi.edu, or visit us in the
Information Commons on the Second Floor of Swirbul Library.

** Reminder: Your Website is http://home.adelphi.edu/~.33

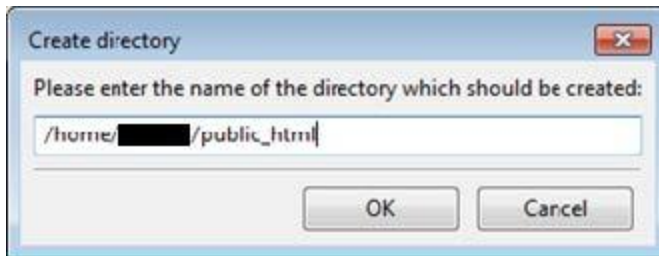
@panther:~$
```

Using FileZilla FTP Client

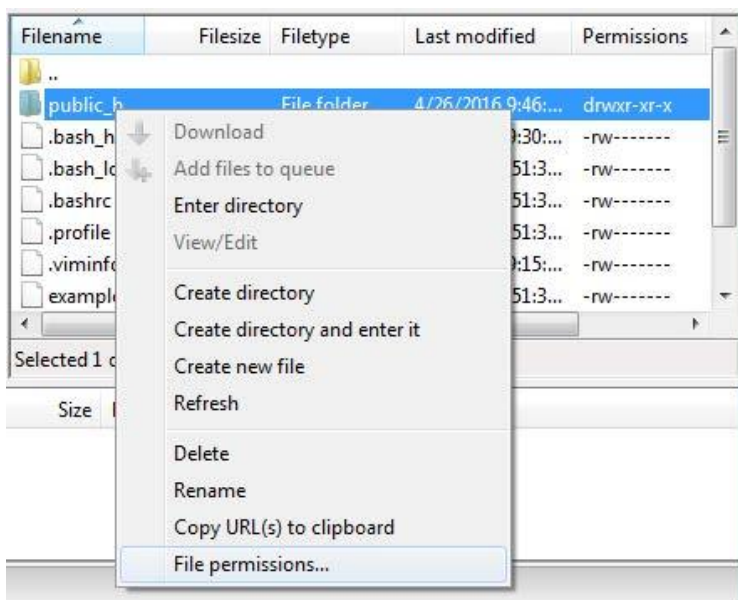
1. Connect to Panther using FileZilla.
2. In the upper right box, there will be a list of directories. Right-click on your home directory folder and select "Create directory".



3. Name the directory "public_html" and click "OK".



4. In the bottom right box, right-click on the public_html directory and select "File permissions...".

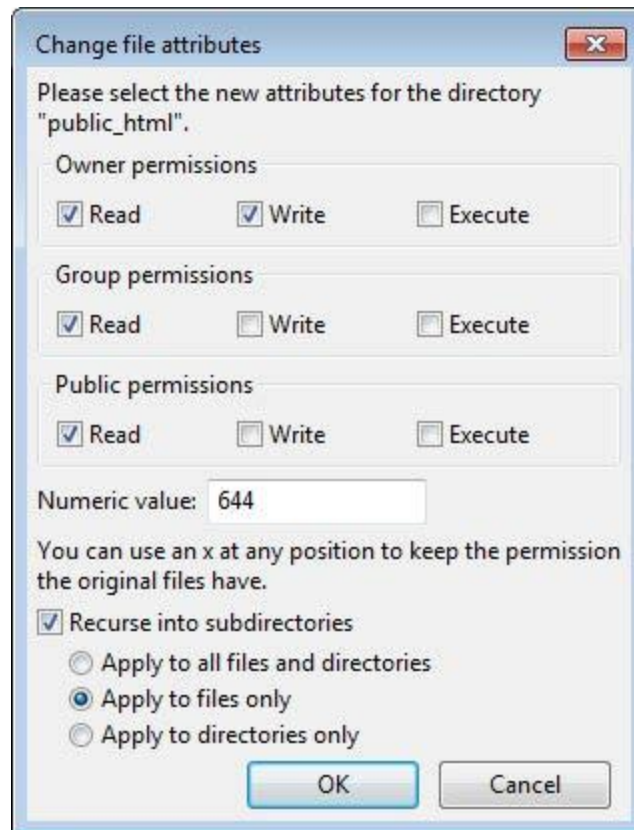


5. Change the permissions to be:
 - a. Owner permissions: read, write, execute
 - b. Group permissions: read, execute
 - c. Public permissions: read, execute



6. Repeat steps 4 and 5, this time setting permissions for files:
 - a. Owner permissions: read, write
 - b. Group permissions: read
 - c. Public permissions: read

- d. Select the checkbox “Recurse into subdirectories” and choose the radio button “Apply to files only”.



7. You can now transfer your website files into the public_html directory and access them at the URL: <http://home.adelphi.edu/~yourhomedirectory>.

Note: The link to your website will be displayed upon each successful SSH Client login if you can't remember the link.