

## **Important Contacts**

Ben Murphy - [murphy.ben@gmail.com](mailto:murphy.ben@gmail.com) - 734-474-1074

Reach out to Ben with questions about this document or other administrative and logistical issues before 9 am Saturday; call him if you can't find Bailey or AK at the respective info tents

Chris Leeson - [cleeson93@gmail.com](mailto:cleeson93@gmail.com)

Reach out to Chris with specific concerns about Men D1 or Men D3, such as schedule, format, round timing, etc.

Candace Brahm - [can.brahm@gmail.com](mailto:can.brahm@gmail.com)

Reach out to Candace with specific concerns about Women D1, such as schedule, format, round timing, etc.

Bailey Torvinen - TD at Legacy Site - find her at the info tent at Legacy tournament central

Reach out to Bailey with any issues or concerns at the Legacy site during the weekend

Aakar "AK" Mehra - 832-597-1018 - TD at Merrill Site - find him at the info tent at Merrill tournament central

Reach out to AK with any issues or concerns at the Merrill site during the weekend

Legacy Office - 810-231-9288

On Saturday, our main contact person is Jessica and on Sunday we should talk to Droo or Gretchen; most likely the folks above will be better to reach out to unless you have a question about the facility itself, like the concession stand or the bathrooms inside

## **Field Locations**

We are using two field locations:

"Legacy" = Legacy Center = 9299 Goble Dr, Brighton, MI 48116

<https://goo.gl/maps/Y6pfNnesG6y>

"Merrill" = Manly Bennett Park on Merrill Rd. = Merrill Rd, Hamburg, MI 48139

<https://goo.gl/maps/pUttXSGfXin>

## **Field Arrangements By Day:**

### Saturday:

Women D1 at Legacy

Men D1 at Merrill

Men D3 at Legacy

### Sunday:

Women D1 at Legacy

Men D1 championship bracket at Legacy

Men D1 9th through 12th at Merrill

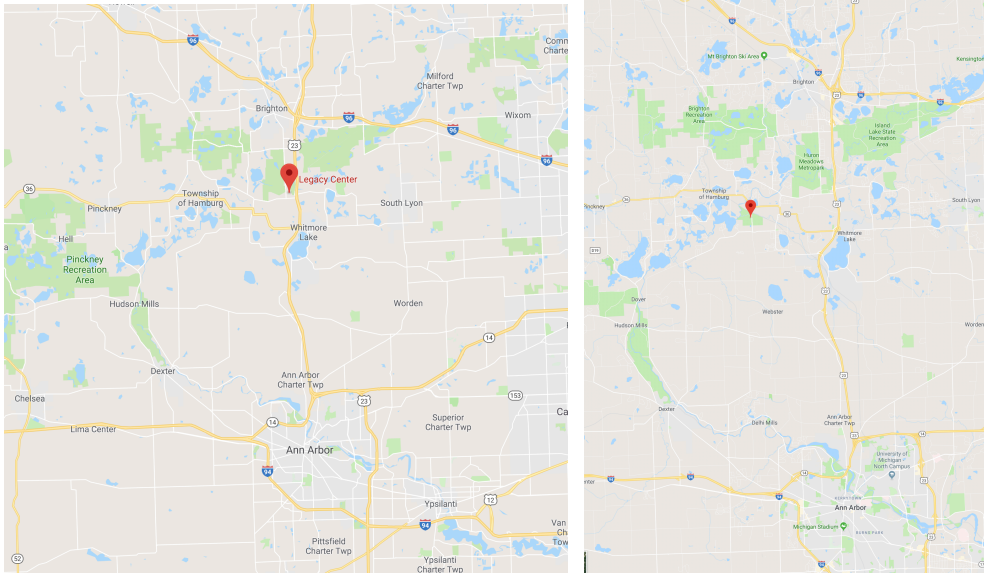
Men D3 at Merrill

## **Directions To Fields & Other Points of Interest**

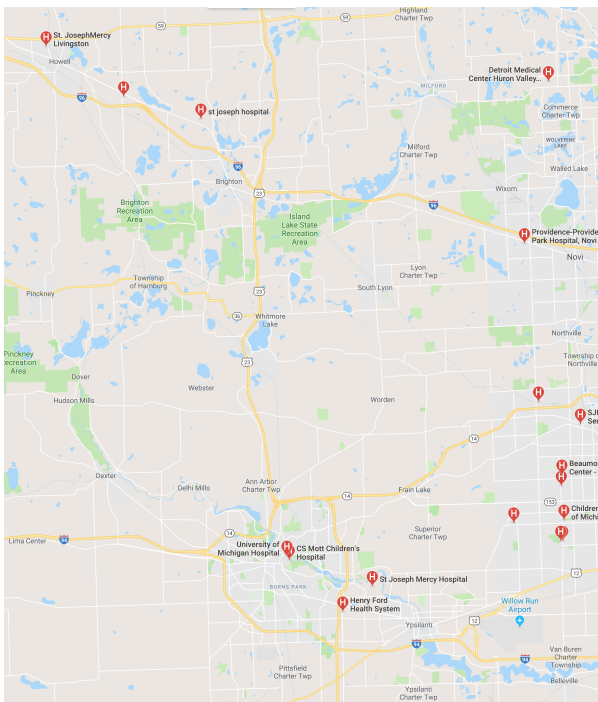
Click on the links above for each location to get full driving directions.

Legacy is off US-23 exit 55 between Brighton and Ann Arbor.

Bennett Park on Merrill Rd is about 10 minutes drive to the West of Legacy



Nearest hospital is probably in Ann Arbor, either University of Michigan or St Joseph; if traffic in Ann Arbor is really bad for some reason, there are also a number of other hospitals less than 30 minutes away.

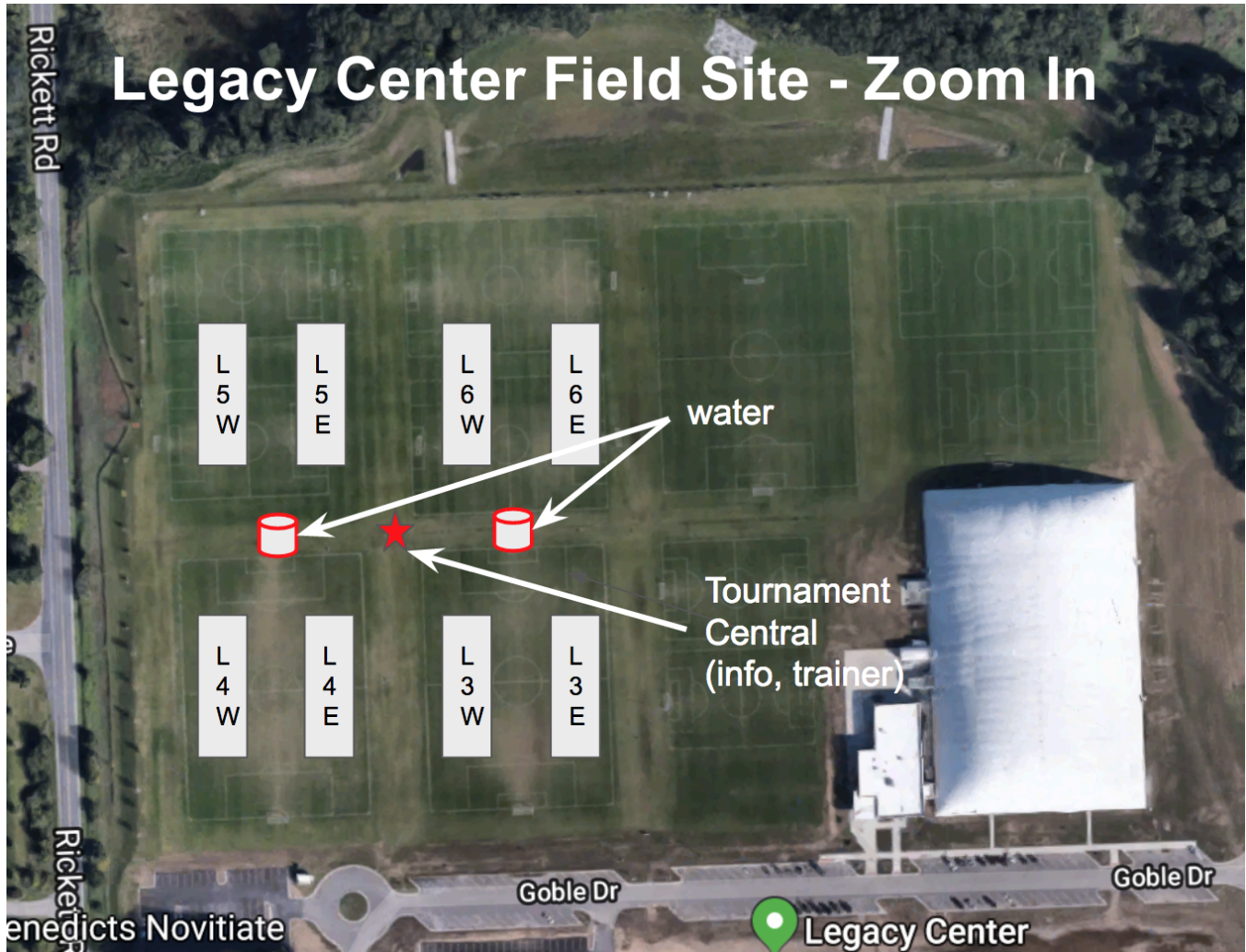


## **Field Maps**

Legacy numbers the soccer fields and we are on soccer fields 3, 4, 5, 6; our fields are numbered to correspond to those numbers so that they're easier to find. Each soccer field is split in half to have two ultimate fields running North/South, splitting the soccer field in half with an East half and a West half. For example: "L4E" is the Legacy site, field 4, east half of the soccer field.

Merrill Rd park we are using fields 9, 4, 5/6 combined and 2/3 combined. Numbering works the same but with a different first letter, so “M9E” is the Merrill Rd site, field 9, west half of the soccer field.

Here are images and below are links to the full details of our field map as well as a link to Legacy’s field numbering. We have placed markers in **approximate** locations for Tournament Central and the water stations. These should be easy to find if they end up being setup in slightly different locations. Bathrooms should also be easy to find in the buildings at Legacy and porta-johns at Merrill, but if you have questions, see the folks at the information tent at tournament central.



## Bennett Park / Merrill Rd Field Site - Zoom In



More details, including zoomed out maps and zoomed in maps with field numbers are here:

<https://docs.google.com/presentation/d/1G04C79WuHnRF5Fqrt0xTGzRRSsi8q6ErnDh83zqrKv0/edit?usp=sharing>

Examples of Legacy's field numbering: <http://pwi.tourneycentral.com/travel.html>

### **Schedules and Format**

All games will be played to a score of 15, win by 2, with 2 hour rounds; soft cap at 90 minutes, hard cap at 110 minutes. All cap rules follow [USAU 11th edition rules](#), section V. Length of Game. 2 timeouts per half per team. Note that caps do not impact timeouts, but overtime rule (game tied 14 to 14) does apply and is separate from the cap rules. Please also note that timeouts are supposed to last 90 seconds, and especially in games where time caps are in effect, it is expected that timeouts will be timely.

Saturday rounds are at 9am, 11am, 1pm, and 3pm. Sunday rounds depend on field site; Legacy rounds start at 8am, 10am, noon, and 2pm; Merrill rounds start at 9am, 11am, and 1pm. Not all divisions will need all rounds; for more information see the detail on the Score Reporter and the notes below.

### **USAU Score Reporter Links**

<https://play.usultimate.org/events/Great-Lakes-D-I-College-Womens-Regionals-2018/>

<https://play.usultimate.org/events/Great-Lakes-D-I-College-Mens-Regionals-2018/>

<https://play.usultimate.org/events/Great-Lakes-D-III-College-Mens-Regionals-2018/>

**Notes:**

- Formats for championship events are dictated by the [USAU Formats Manual](#) in almost all cases; any exceptions are approved and decided by the regional coordinator, and typically the national director for the respective division; that means the TD and organizers did not choose the format :-)
- Tie breaker rules also come from the format manual (see page 6), but usually start with point differential amongst the tied teams; be informed about tie breaker rules ahead of time!
  
- Women D1 - format 8.1 - all games at Legacy both days
- Men D1 - 12 teams for 1 bid - Saturday at Merrill; Sunday championship bracket at Legacy and 9th through 12th at Merrill; we are using an approved alternate format with 4 pools of 3 and a pre-quarter round on Saturday (instead of format 12.1 from the format manual, which requires 5 pool play games Saturday and no byes); on Sunday, the Men D1 championship bracket is offset by 2 hours from the normal start time to ensure that the Men D1 final will be observed (those rounds are 10am, 12pm, 2pm)
- Men D3 - format 8.1 - Saturday at Legacy, Sunday at Merrill; the Men D3 teams opted for a 9am start on Sunday and finals will not be observed

**Game Scores, Scoreboards, Score Reporting**

At each field, there should be a cheap little scoreboard that you can use for tracking the score of the game. Updating these will help spectators and clueless teammates stay up to date. These are just for convenience.

We will have volunteers roaming the fields to collect score updates and update the USAU websites with score information. We will try to have scores updated at least once per half per game if possible.

Once your game ends, please ensure that you check in with a volunteer or the information desk to ensure that the correct score is recorded and reported.

At Merrill Rd you can also text scores to AK: 832-597-1018

Please follow the format "Division: School score - School score" so that it's clear.

For example "Men D3: Knox 8 - North Park 15"

You can also tweet scores at our twitter account using this same format and we will retweet them. Our volunteers will also be tweeting scores all weekend, hopefully.

<https://twitter.com/BendyUltimate>

**Spirit Scores**

We are using a new USAU system that they are piloting for entering spirit scores for our games at regionals. These are Google forms that you can easily open on your phone and enter spirit scores after

each game. Please take the time to fill out this form after each game, it takes like 2 minutes, and USAU will appreciate it.

There is a different form for each division!

Women D1 - <https://goo.gl/forms/2sGEEbZj9q8a9X6p2>

Men D1 - <https://goo.gl/forms/DsyYYkaL535Jd7po1>

Men D3 - <https://goo.gl/forms/oBmILPe42qZmc6Qr1>

## **Waiver / Registration Forms**

Please print and have all rostered players sign this waiver:

[https://docs.google.com/document/d/1ObSEPLPzb2zmOH\\_PbzqFKdgD\\_WM9A007ry\\_HXMc3QLM/edit](https://docs.google.com/document/d/1ObSEPLPzb2zmOH_PbzqFKdgD_WM9A007ry_HXMc3QLM/edit)

Turn it in to tournament central before your first game on Saturday. Each team gets a game disc for the tournament and you can trade your completed waiver for your game disc at tournament central.

## **Other FAQ**

**Trainers** - each field site will have a trainer there 1 hour before the first game each day; if you require special attention, we suggest allowing extra time early in the day, as that is the most popular time for trainers

**Water** - the field sites are providing water in large jugs for players; volunteers on site will be helping to ensure that the jugs stay full; reach out to the folks at the info tent if there is not enough water available and they will connect with the field site people that can refill them for us

**Food** - we will have some free food available at the info tent; we plan to provide some bagels, some fruit, and some peanut butter; we are really excited that we will have food vendors at both locations on both days! Additionally, Legacy has 2 concession stands that will be selling food, and there are tons of restaurants nearby as well

**Contact Persons** - we will have people at the information tents at each field site that can help answer any questions or concerns you might have; hopefully we have thought of everything and there will be no problems, but in the event that you need something, those people at the information tents will be most capable of handling unexpected problems

**Observers** - we will have 3 observers this weekend, which is enough for 1 crew, essentially; as a result, the Men D1 bracket is staggered on Sunday to ensure that Women D1 and Men D1 championship games can be observed; additionally, observers will be working games randomly throughout the weekend; if you'd like to request observers for a specific game, email me at [murphy.ben@gmail.com](mailto:murphy.ben@gmail.com) and I will pass the request along; not all requests can be honored, of course

**Captains Meeting** - we do not plan on having a captains meeting because the goal is for everything that captains need to know will be in this document; if you have questions, please reach out to us ([murphy.ben@gmail.com](mailto:murphy.ben@gmail.com)); we will update this document to include additional information as needed

**Round Horns** - TD at each site will blow horns as follows:

1 horn = start of round;

2 horns = soft cap;

3 horns = hard cap

**Volunteers** - we will have a handful of volunteers at each site; they will be wearing matching shirts that are a sort of bright pink/orange color to make them easy to find; if you're not sure, head to tournament central for help; please be sure to treat the volunteers with respect -- they are giving their time to help make the tournament run as smoothly as possible

**Field Lines** - we have two ultimate fields on each soccer field; there should be room for players to stand between the ultimate fields in the middle of the soccer field, but please do not put any equipment in that space; the facilities are lining the fields to have player lines (dashed lines) behind the sidelines; please be sure that players stay behind the player lines; on the outside of the fields, please keep all gear, tents, chairs, etc. a few yards behind the player lines; ideally we will have solid lines on the grass for equipment but in some places there may not be a line; for the sake of player safety, take the time to put your equipment far enough away from the field to avoid any issues;

**Dogs** - Dogs are not allowed at either field site, sadly

**USAU Series Discs** - we have a few discs for sale for \$10; reach out to somebody at the info tent if you want to buy one!