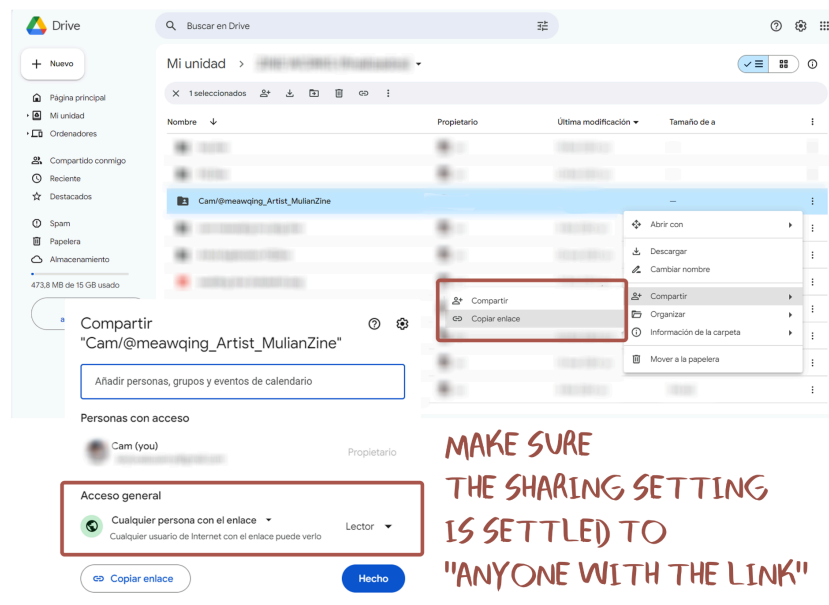


CONTRIBUTOR GUIDELINES

Please make sure to read all the guidelines and don't forget the [SUBMISSIONS AND TIMELINE](#) section at the end. You can easily move through sections using the outline of this doc. If you need help or have any doubts (including reading difficulties due to a language barrier), please contact any of the mods!

APPLICATIONS GUIDE

When completing the application form, you need to include samples of your works so the mods can better consider each application. **All works submitted for applications will remain private and won't be used in any capacity outside of application purposes by mods.** You will need to link a Google Drive folder that contains these samples. The folder's name must be your @ or preferred name + [ROLE] + Mulian Zine. Make sure the settings are set to "Everyone With the Link" with reading permits, so we can access the folder:



WHAT TO SUBMIT AS A SAMPLE WHEN SIGNING UP:

- If you are an **ARTIST**, please include **3 sample arts** that you find appropriate. They do not need to feature MuLian and can involve any other character/ship. You're highly encouraged to submit at least one piece with a background, but it's not required.
- If you are applying as a **MERCH ARTIST**, include **2-5 examples** of your art/style. If you've worked on digital merch before, you can also include the sample images.
- If you are a **WRITER**, please select an excerpt of your work that you feel best demonstrates your writing style. **Maximum is 1000 (1K) words.**

SUBMITTING PITCHES FOLLOWING APPLICATION APPROVAL:

WRITERS

- All works submitted to the zine must be centered around MuLian. This does not apply to the application submissions. Canon and AU works are accepted. You are free to depict their relationship as you wish (lovers, friends, enemies, etc.), as long as they remain the focus.
- Xie Lian and Mu Qing should be the main characters of your story. Other characters may appear as side characters/side ships. For example, your work may feature Feng Xin, Hua Cheng or other ships, but only as sides or subplots.
- The minimum word count is **700** and the maximum is **3000 (3K)**!
- All works must be written in English.
- You can only submit one fic for the zine.
- NSFW is allowed but must be tagged as such.
- Sensitive topics must be tagged appropriately (ie. genderbend, comphet, omegaverse, consensual BDSM or light BDSM –not bodily harm, etc.)
- **Dark or disturbing content is not allowed** (ie. extreme BDSM, abuse, non-con, incest, MCD if not temporary, graphic gore, body horror, etc.) For more details refer to [NSFW specifications](#).
- Your fic must relate to one of the following seasons and keywords. Please refer to the [submissions and timeline section](#) for more information on the selection process.
 - ❖ Spring: blooming, growing, youth, wind
 - ❖ Summer: warmth, drought, sunlight, completeness
 - ❖ Autumn: harvest, fall, chill, loss/lost
 - ❖ Winter: cold, evergreen, dry, rest
- Fics featured in the Spring/Summer seasons **MUST** have a happy ending. It's not mandatory for fics featured in Autumn/Winter seasons, but still recommended.
- All final works must be beta-read, preferably by beta readers in the server.

ARTISTS

- All works must be centered around MuLian. This does not apply to application submissions. Canon and AU works are accepted. You are free to depict their relationship as you wish (lovers, friends, enemies, etc.), as long as they remain the focus.
- Xie Lian and Mu Qing should be the main characters of your story. Other characters may appear as side characters/side ships. For example, your work may feature Feng Xin, Hua Cheng or other ships, but only as sides or subplots.
- All art MUST include some kind of background/full-page design (limit the amount of white space).
- Page art dimensions : 2480 x 3508 (A4) pixels between 300 and 600 dpi in portrait (VERTICAL) mode. However, if you want to use landscape, please specify.
- Art should be submitted in .PNG format.
- Your work can be more than one page, for instance if you are making a comic or a diptyque. But it must be approved by mods, please let us know from the start.
- NSFW art is fine, however, but **dark or disturbing content is not allowed** (ie. extreme BDSM, abuse, non-con, incest, MCD if not temporary, graphic gore, body horror, etc.) For more details refer to [NSFW specifications](#).
- Your art must fit the season vibe and/or relate to the keywords for that season. Please refer to the [submissions and timeline](#) section for more information on the selection process:
 - ❖ Spring: blooming, growing, youth, wind
 - ❖ Summer: warmth, drought, sunlight, completeness
 - ❖ Autumn: harvest, fall, chill, lost
 - ❖ Winter: cold, evergreen, dry, rest
- Art featured in the Spring/Summer seasons MUST be happy or endearing overall. It's not mandatory for the ones featured in Autumn/Winter seasons.

SECTION PAGE ART

(Guest artists specifically, all the above apply)

- MuLian must be properly referenced in the piece (symbolism is okay as long as it is clearly depicting the pair and is the central theme).
- Background or full page design is necessary.

- The name of the season must be included/visible in the art itself OR you should leave space for it for the mods to edit the title in. If you're not sure how to make it, please work directly with the design mod.

MERCH

- All works must be centered around MuLian. This does not apply to application submissions. Canon and AU works are accepted. You are free to depict their relationship as you wish (lovers, friends, enemies, etc.), as long as they remain the focus.
- Xie Lian and Mu Qing should be the main characters of your work.
- Merch should be at least 300 dpi and use CMYK color.
- Merch is intended to be print-at-home merch, so you should offer two final files .PNG and also .PDF in case it's a calendar, stickers, to-do notes, etc.

COLLABS

If you'd like to work in a collab, you can post a request in the [#collab-and-beta-matchmaking](#) channel using the following template you will find there.

What types of collabs are we allowing? Collaborations can be any pairing of art/merch with a related fic. All contributors must provide one individual work (even if they're connected as a collab)!

Collaboration pieces/creations must be decided and agreed upon before pitches/ideas are submitted so mods can approve of the entire collaboration jointly. Both contributors must submit the idea among their other proposals, indicating it as a collaboration work and stating who are you working with.

You can submit more than one collaboration idea for your pitches for approval. You may pitch multiple collabs with different people, or pitch only one collab among solo pitch ideas for one or different seasons. You can pitch collabs as you would with a solo pitch, it's not necessary that you pitch a solo idea to pitch a collab! You can if you want, but it's not necessary since the collaboration would cover the idea for one season!

Collaboration ideas will be treated as any other pitch idea submitted for approval and, as such, we strongly encourage you to not stick or attach to one single idea! Regarding all this, at the moment mods have considered each contributor presenting only one work in the end, but depending on the creators' disposition and time we could accept a second entry in case you wanna do more than one collab or you're interested in a solo and a collab 🌸

NSFW SPECIFICATIONS

The zine will have two different booklets: a main booklet that will only include the SFW works and an extra one that will include the NSFW works. Both will be available for download; it will be a personal choice which one to consume.

The scale below features different levels of NSFW, to define limits related to **what type of NSFW content is allowed or not?**

ALLOWED



- SFW
- Non-sexual/romantic age-regression
- mild/vanilla NSFW content.



- Light BDSM (such as mild sex-related body harm, bondage, etc), dubious consent, body fluids (sex-related and light blood).
- Violence and physical harm not sexual in nature (but not grotesque or too explicit, ie. you can have a torture or physical harm/wounds related to a fight scene but not describe it in close detail).



NOT ALLOWED



Dead dove content including but not limited to:

- Extreme BDSM (not safe/sane body harm or permanent body modifications)
- Taboo paraphilias (noncon, bestiality, lolisho/underage, etc)
- Explicit gore / body horror
- Body fluids (not sex related: vomit, scat, etc.)

Essentially, please don't include things that will make an angry mob threaten to dox our entire mod team 😓

In the case of Merch-Artists specifically, we encourage their work to fit the  category, but it's not mandatory. They may include  content as well.

- Writers **must tag their NSFW content appropriately**, even when submitting the work to the mods during the check-ins.

- **Cover page arts** (from guests) must be **SFW**, because it would be the same art featured in both booklets (SFW and NSFW).

If you have questions regarding the content your work may or may not feature, feel free to reach one of the mods.

SUBMISSIONS AND TIMELINE

- When pitching ideas after you're accepted, you will be asked to provide **4 ideas** (one for each season vibe). Each idea must include a brief description. Writers can also provide a basic summary and artists can provide a basic sketch (not mandatory). We will ask you to rank the ideas from your favorite to your least favorite.

Mods will pick one work per contributor and sort all contributors between the four sections (seasons) of the zine accordingly. Ideally, we hope to sort everyone with their favorite idea to their preferred section, but we must ensure balance in the zine works. As such, please keep in mind we may not always pick the preferred idea for each contributor, but what we think can be better for the whole project purposes. Therefore, we strongly suggest that you offer **ideas you like**.

We'll confirm approval on ideas by Oct 22th. After your idea is approved, you may start working on it before the check-ins.

- If you wish to **CHANGE your idea once mods approve it**, you must discuss with the mod in charge of art/writing according to your role. You may submit another idea if needed, but **it must fit the season you're already sorted in**.
- There will be three check-ins before the final submission:
 - **1st Check In:** Nov 22th (10-20%)
 - **2nd Check In:** Dec 23th (30-50%)
 - **3rd Check In:** Jan 20th (60-80%)

 **Final Submission:** Feb 10th

You won't be in trouble if you miss one of the check-in dates or if you haven't made any significant progress, but we encourage you to follow the schedule! If you miss a date or you need more time, please reach out to the mods and let them know. Keep in mind, this schedule is mostly so we can follow your progress and ensure completion by the deadline, if possible. Reach out for help if needed so the mods can appropriately accommodate.

- **All final submissions from writers must have been already beta-ed.** Beta reading can be done by another person from the server or your preferred personal friend not related to the zine. If you have any issue finding a beta partner, please reach out to one of the mods.
- Artists may provide their final work **glazed**. It's not mandatory, but we encourage it as the zine will be posted online for anyone to access and download it. If help is needed to glaze your work (you don't know how, or aren't able to) reach out to your mod.
- All works should remain unpublished until the zine is released. You are free to share excerpts of your WIP (please do so partially, not the full image or fic) on your socials. Please do so with the tag #MulianZine2024.
- You may always share with others in the server through the [#wip-sharing](#) channel.
- However, you're encouraged to reserve your work and post after the zine is released. Don't forget to tag the zine accounts so we can RT/reblog your post!
- An AO3 collection will be created. Contributors are encouraged to publish their fic after the zine is released if they wish to do so.
- All works should be original and no form of plagiarism will be tolerated. **This includes any AI-Generation form.**

Keep track of the [#announcements](#) channel for news. All forms to submit the check-ins and finals will be posted there. Make sure to submit your art via Google Drive link; you may directly link a folder of the files or the specific file of your art/fic for our zine. If there is a problem with this, please reach out to the mods.

WHICH MOD TO REACH?

You may direct your questions to any of us in the [#ask-a-mod](#) channel but, if you need specific help, reach the mod you think can be more helpful or is in charge of your general area.

- **Ash** for Design Issues / Merch Art
- **PeacefulDiscord** for Writing
- **Cam** for Art / General
- **HB** for Discord Issues / General