

REAL

CLEAR

STATS

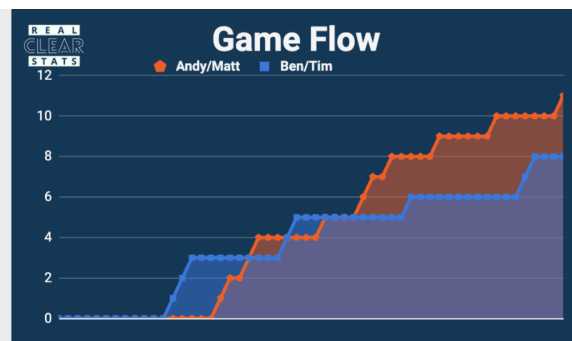
Your Next Level of Pickleball is Here: *Elevate Your Game*

Trusted by professional pickleball teams, now available to you.

RCS technology provides *objective* feedback on where you are strong and weak as a player, giving you insights to level up your game *faster!*

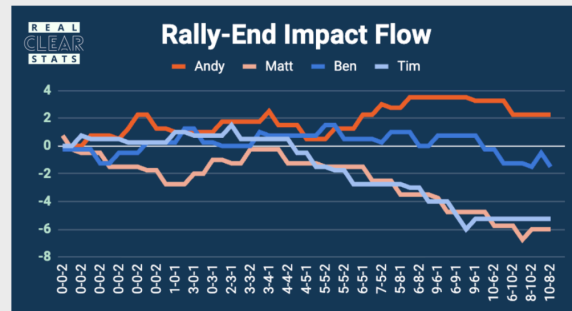
You're a passionate pickleballer. You play for fun, to compete, and to improve. But what do you need to work on? What does the *data* reveal?

REAL CLEAR STATS	Shot Accuracy			
	Ben/Tim		Andy/Matt	
	Ben	Tim	Andy	Matt
Total Hits	84 50%	83 50%	80 48%	88 52%
Total Hits Chart				
Total Errors	12	12	8	14
Unforced Errors	7	7	4	9
Shot Accuracy	85.7%	85.5%	90.0%	84.1%
# 3rd Shots	13	7	9	15
3rd Shots Chart				
3rd Shot %	92.3%	85.7%	88.9%	73.3%



REAL CLEAR STATS	Rally Wins			
	Ben/Tim		Andy/Matt	
	Ben	Tim	Andy	Matt
Winners	3	0	2	2
Errors Forced	5	4	7	3
Rally Wins *	8	4	9	5
Hits / Rally Win	10.5	20.8	8.9	17.6
Unforced Errors	7	7	4	9
Player Impact **	1	-3	5	-4

* Rally Wins: Winners + Errors Forced ** Player Impact: Rally Wins - Unforced Errors



Your Free Data Analysis

Join our Expert Stats Analysis pilot program and play, record, and send to us (via YouTube) a group of six games (~1.5 hours). In return, you'll receive the RCS comprehensive, personalized data report on your performance. This deep-dive analysis won't be free for long, but we're giving you the chance to try it now as we learn more about rec player game data.

Scheduled times not working for you? [Signup here](#) and we'll find a slot for you!

What You Get:

- A game-by-game dashboard showing key metrics.
- Your aggregated data, normalized to a set 40-rally game length
- The raw data you need to take control of your improvement.

REAL CLEAR STATS Men's Doubles Ind. Avg / Game			Rally Wins					
Player	Partners	Win PCT	Accuracy	Winners	Errors Forced	Total Rally Wins	Hits / Rally Win	Player Impact+
Matt	Andy/Tim/Ben	.571	90.98%	0.7	3.6	4.2	15.3	0.3
Ben	Tim/Andy/Matt	.714	86.59%	2.6	4.1	6.7	9.9	-0.4
Andy	Matt/Ben/Tim	.571	87.18%	2.0	4.9	6.8	9.8	-0.7
Tim	Ben/Matt/Andy	.143	86.57%	1.7	3.3	5.0	14.5	-1.6
Average:		.500	87.77%	1.7	3.9	5.7	11.9	-0.6

In the example above, note that the player with the *fewest errors* (highest Accuracy) actually best maximized his Player Impact+ every game — despite winning rallies only every 15 hits.

REAL CLEAR STATS Men's Doubles Early Rally Analysis Individual Avg / Game							3rd Shots			
	Win PCT	G	W	L	Point Diff	3rd Shot Accuracy	3rd Shot Successful	3rd Shot Att	3rd Shot Successful %	
Andy	Matt/Ben/Tim	.571	7	4	3	2.14	80.0%	6.2	11.8	52.2%
Ben	Tim/Andy/Matt	.714	7	5	2	1.57	88.9%	4.7	9.5	50.0%
Tim	Ben/Matt/Andy	.143	7	1	6	-4.43	82.4%	3.9	8.9	44.1%
Matt	Andy/Tim/Ben	.571	7	4	3	0.71	87.5%	2.5	6.3	39.6%
Average:		.500				0.00	84.2%	4.3	9.1	47.48%

Another example: Note that the player with the second-best 3rd Shot Accuracy actually hit the *least successful* 3rd Shots. This tells us that this is an area for improvement, and his 3rd Shots are too high and attackable.

Scheduled times not working for you? [Signup here](#) and we'll find a slot for you!



[Signup QR Code](#) 

Format & Structure FAQ

How many games should we play? You can play two, four, or six games, but to receive the aggregated statistical analysis, we require you play all six. If you play two or four games, we will still provide you with the data dashboard from each individual game.

What scoring format will be used? We will play three games using Rally Scoring to 15, and three games using Sideout Scoring to 15. The Rally Scoring games will use the USAP Rally Scoring system (briefly described below). We ask that each player partners with every other player once in a Rally Scoring game and once in a Sideout Scoring game before switching partners.

Frequently Asked Questions

Will these games be going into DUPR or some other rating system? No! The games will remain private, and the data will be shared with you within a week or so. Our focus is on providing you with actionable insights, not on affecting your official rating.

Will video of my games be shared online? Not by us! The recordings are being kept private and are only for our certified scorers to analyze and get the data for you. You can do what you like with whatever you record.

Ready to see your game in a whole new way? Look for the signup sheet to reserve your spot!

USAP Rally Scoring

- Every Rally Scores a point
- Players swap sides with their partner every time they score a point
- Who Serves: On sideouts, the player now playing the RIGHT side (after swapping with their partner) will serve every rally until the next sideout to the opponents
- Once at game point, the leading team must win *by two on their serve*.
 - Sideouts for the team at game point do not result in a point unless the score is tied