

Overview

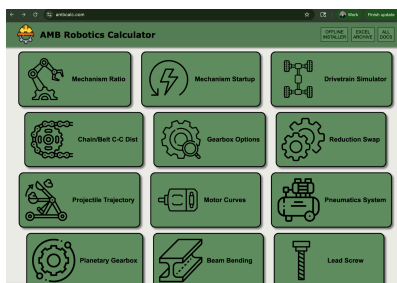
Code: <https://github.com/BioNanomics/wayne-rufus-10411/>

Notes:

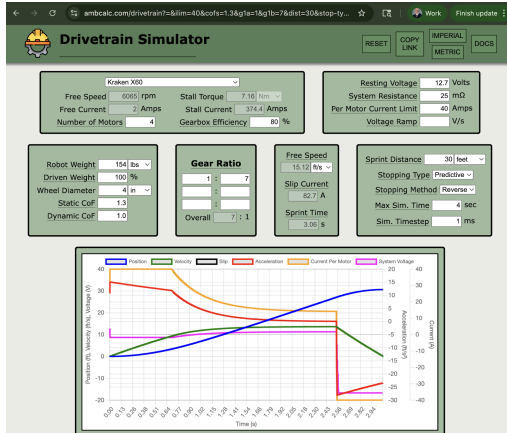
Mar 8, 2026

- Blew fuses during match so added protections.
- <https://wcproducts.com/products/2026-wcp-competitive-concept>

Alex AVH (from <https://www.thequadrangles.org/>)



<https://ambcalc.com/>



<https://www.reca.lc/>

ReCalc
A collaboration focused mechanical design calculator.

Calculators

- Belt Calculator
- Chain Calculator
- Pneumatics Calculator
- Flywheel Calculator
- Arm Calculator
- Linear Mechanism Calculator
- Intake Calculator
- Ratio Calculator (WIP)

Commits on Mar 8, 2026

Update Default RPM btmumma committed 9 hours ago
Drive motors: supply current spike 40A→30A sustained after 3s to protect 120A main fuse horner committed 10 hours ago
Power Limit btmumma committed 10 hours ago
Update README to reflect Elastic usage for Auto Chooser setup and provide detailed instructions horner committed 13 hours ago
Add field-centric driving toggle to ManualDriveCommand with SmartDashboard integration horner committed 13 hours ago
Add fuel chase command with Limelight neural detector pipeline horner committed 20 hours ago
Add AdvantageKit logging coverage: swerve, limelight, hood, commands, all subsystems horner committed 20 hours ago
Move ShootAndClimbTraj constants to own file to survive Choreo regeneration horner committed yesterday
Add Shoot and Climb auto routines (Left/Center/Right) with Choreo trajectories horner committed yesterday

Mar 5, 2026 Doug

- Started REPO. See commits

Commits on Mar 6, 2026

Document driver controls in README horner committed yesterday	d7e1b47	📄 <>
Fix shootManually: spin up before feeding, default RPM 5000 horner committed yesterday	a24f5ca	📄 <>
Add telemetry for active commands and motor voltage in subsystems horner committed yesterday	4755a60	📄 <>
Add <code>Logger.recordOutput()</code> periodic telemetry to all subsystems horner committed yesterday	8572cf4	📄 <>
Shooter/feed fixes, floor reverse, data logging, hanger homing interruptible horner committed yesterday	d746e7d	📄 <>
Revert shooter direction; reverse feeder motor direction horner committed yesterday	00592c4	📄 <>
Reverse shooter motor directions; document button bindings horner committed yesterday	240a2ed	📄 <>
Skip homing and swerve boot-up in test mode horner committed yesterday	25b5b92	📄 <>
Update TunerConstants with doug tuner-swerve-project.json values horner committed yesterday	76e4d99	📄 <>
Fix deploy address to 10.104.11.2 (non-standard robot IP) horner committed yesterday	56344fe	📄 <>
Update team number in wpilib_preferences.json and ensure proper task configuration in tasks.json horner committed yesterday	4b26078	📄 <>
Fix CAN IDs and bus assignments from Tuner X audit 🗒 horner committed yesterday	6823a6d	📄 <>

Kit

<https://wcproducts.com/products/2026-wcp-competitive-concept>



2026 WCP Competitive Concept

The CC, formerly known as the (m)CC, has evolved throughout the years. Our goal is to create robot(s) that are competitive and show what can be done with COTS components. We have created a robot in CAD that we hope will inspire teams for the 2026 season!

Here's a parts list for the 2026 WCP Competitive Concept. Note that these are some of the components used in the CC but not all. BOM sheet/CAD/OnShape for the CC are located at the bottom of this page

NOTE: Full Kits - All electronics are moved & included in Electronics kit, this kit includes motor adapter boards, PDP breakers and DOES NOT include batteries.

Access User Guide, Kit Contents & More!

- CAD - [STEP FILE](#)
- Onshape - [Link](#)
- BOM - [Sheet](#)
- Code - [GitHub](#)
- Build Guide - [GitBook](#)

