

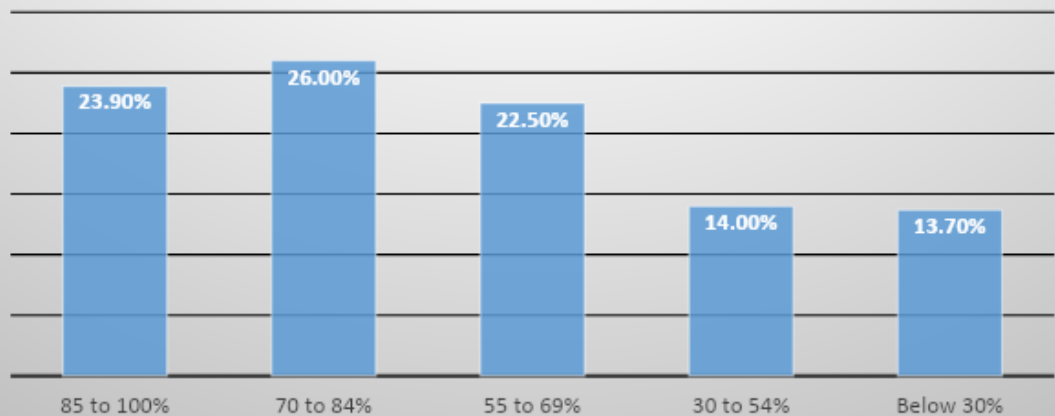


**STUDENT SATISFACTION SURVEY
REPORT (2020-21)**

**DRONACHARYA GOVERNMENT
COLLEGE, GURUGRAM**

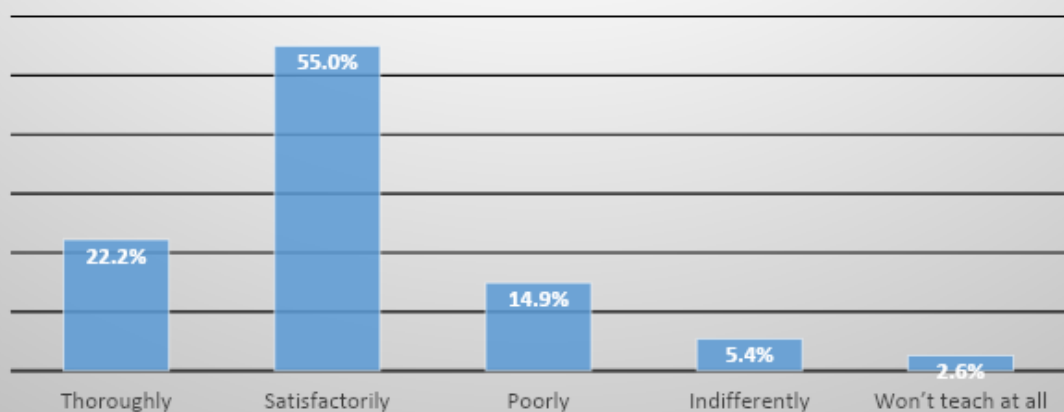
INTERNAL QUALITY ASSURANCE CELL

1.How much of the syllabus was covered in the class?



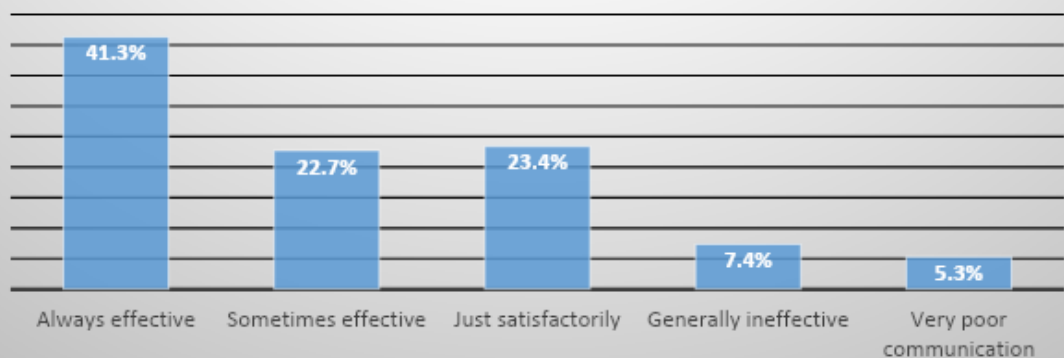
1.

2.How well did the teachers prepare for the classes?



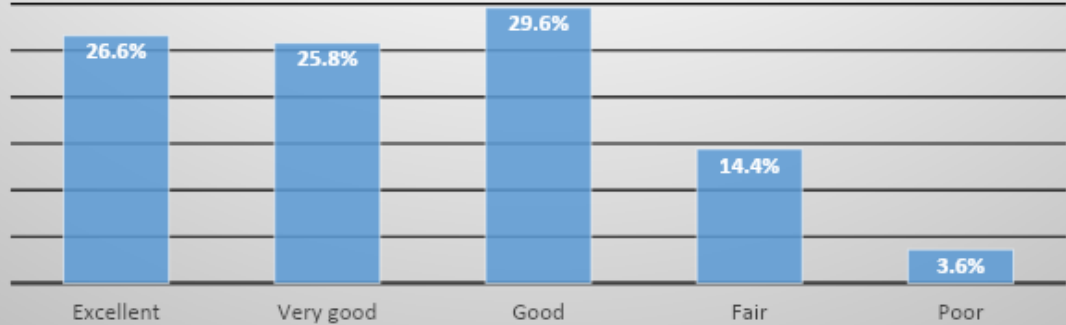
2.

3.How well were the teachers able to communicate?



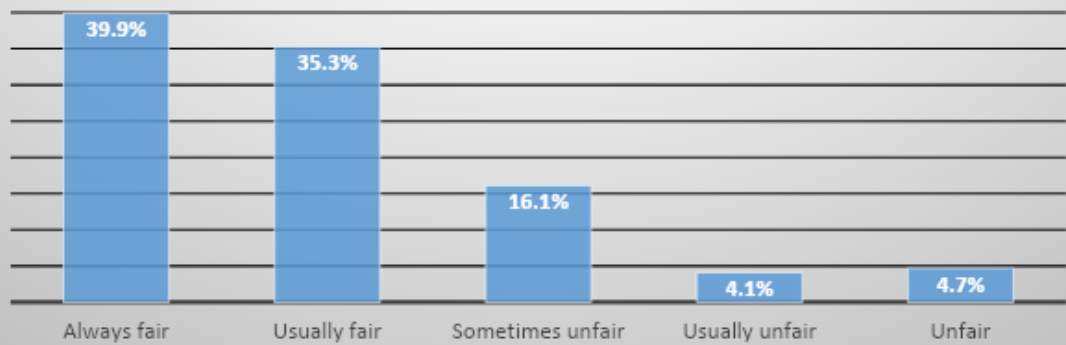
3.

4. How do you describe teacher's approach to teaching as



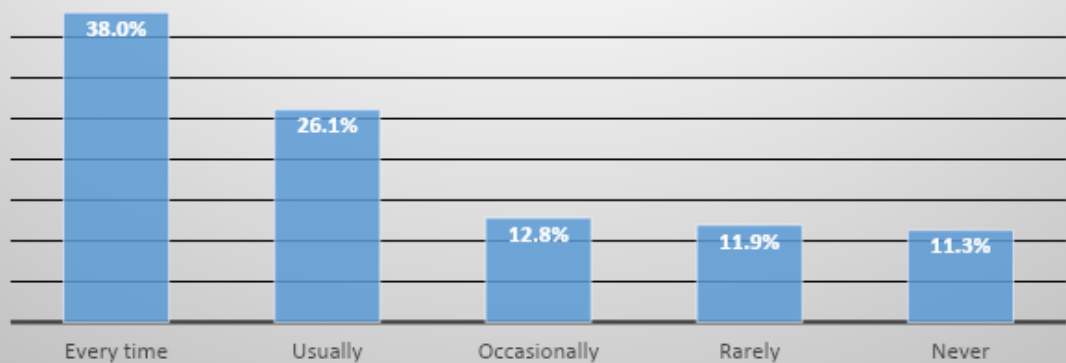
4.

5. How do you rate the fairness of the internal evaluation process by the teachers.



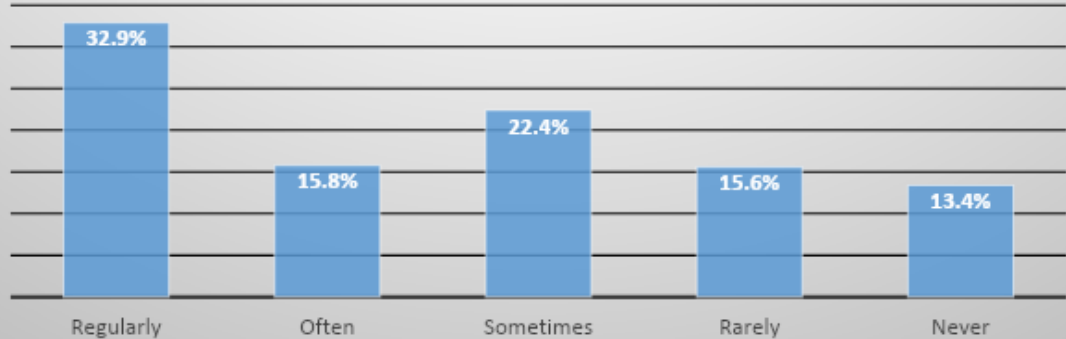
5.

6. Was your performance in assignments discussed with you?



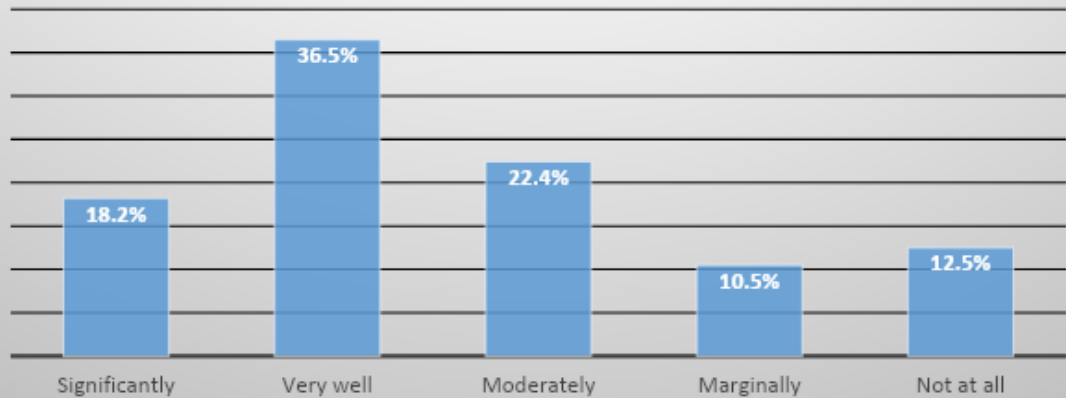
6.

7. Does the institute takes active interest in promoting internship, extension programs, field visit opportunities for students.



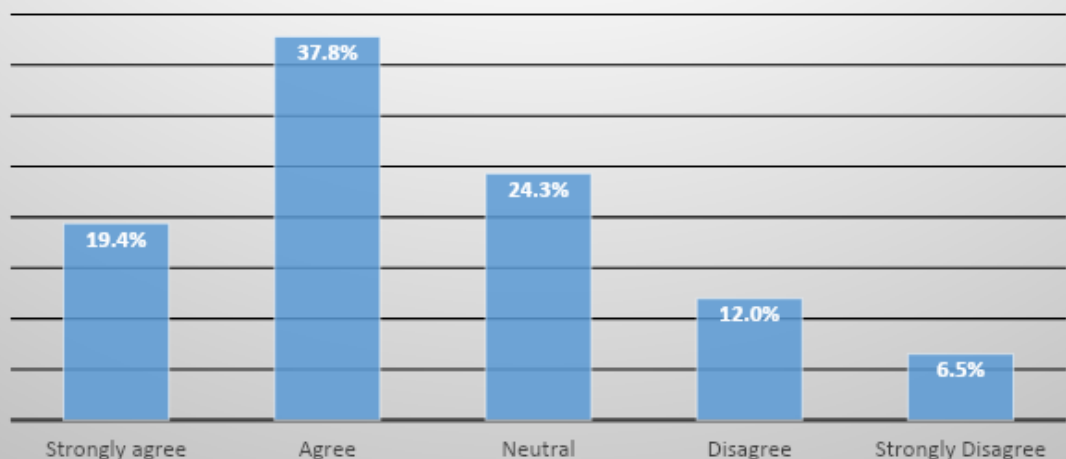
7.

8. The teaching and mentoring process in your institution facilitates you in cognitive, social and emotional growth.



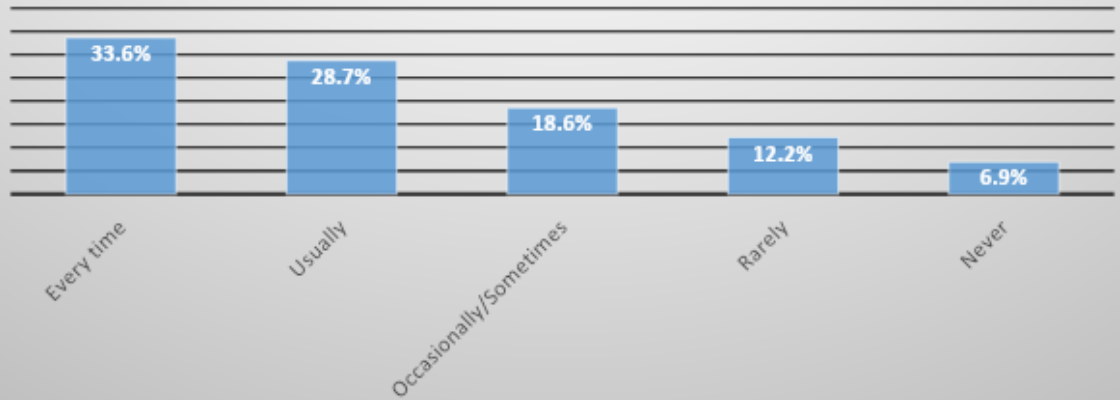
8.

9. The institution provides multiple opportunities to learn and grow



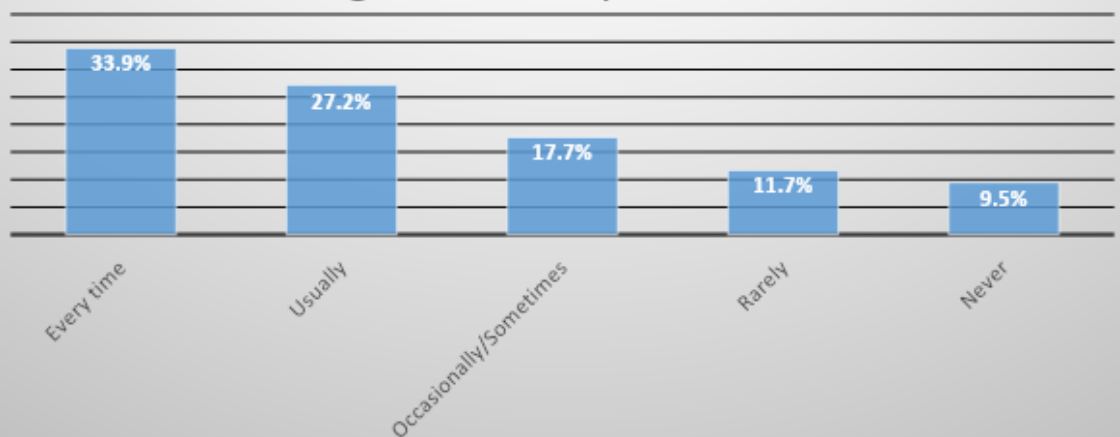
9.

10. Did the teachers inform you about your expected competencies, course outcomes and programme outcomes.



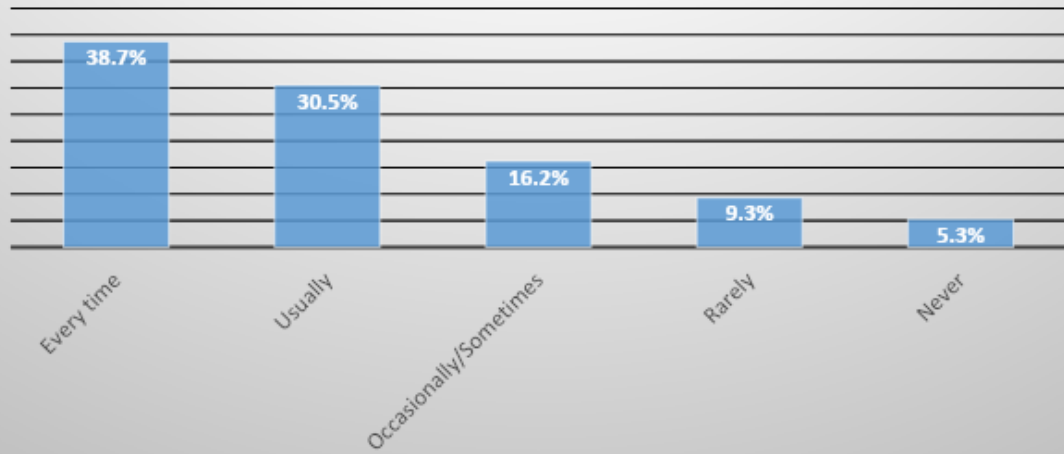
10.

11. Did your mentor did a necessary follow-up with an assigned task to you.



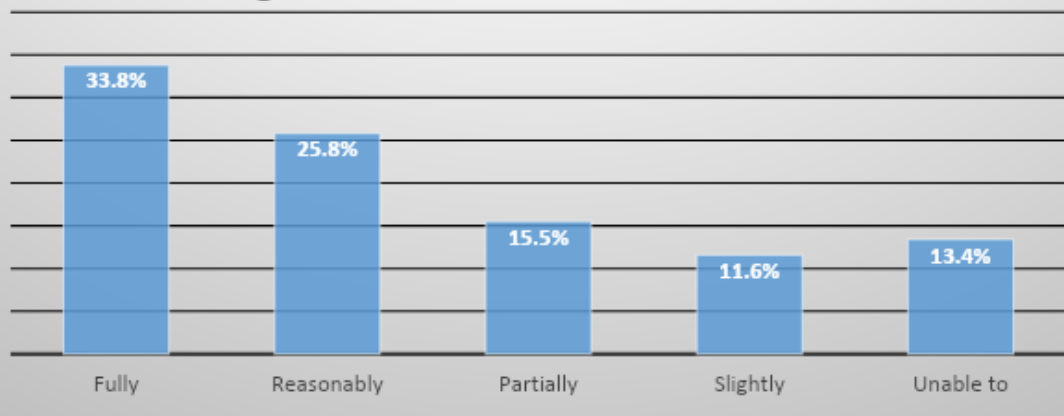
11.

12. Did the teachers illustrate the concepts through examples and applications.



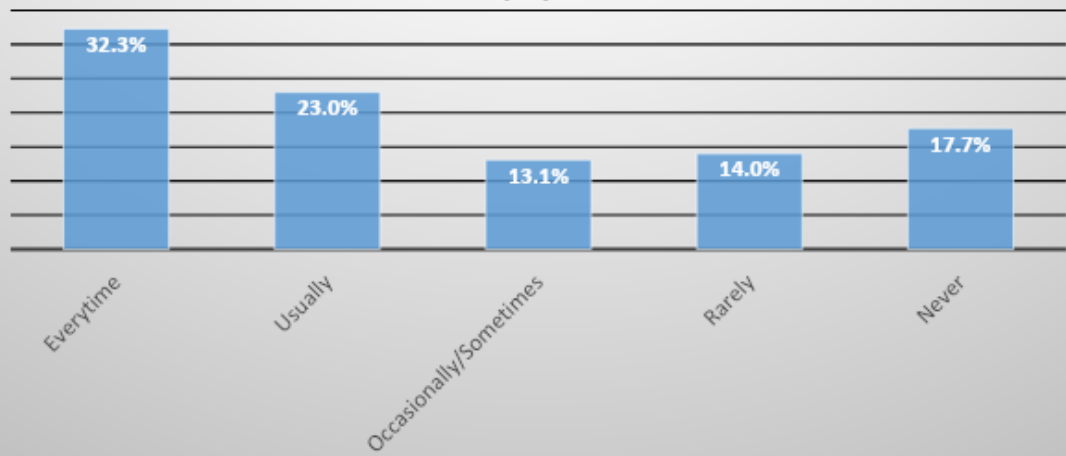
12.

13. The teachers identify your strengths and encourage you with providing right level of challenges.



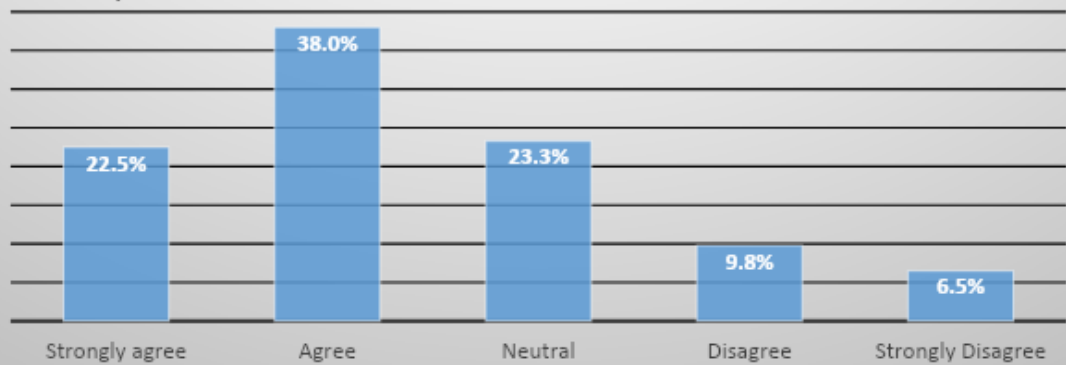
13.

14. Teachers are able to identify your weaknesses and help you to overcome them.



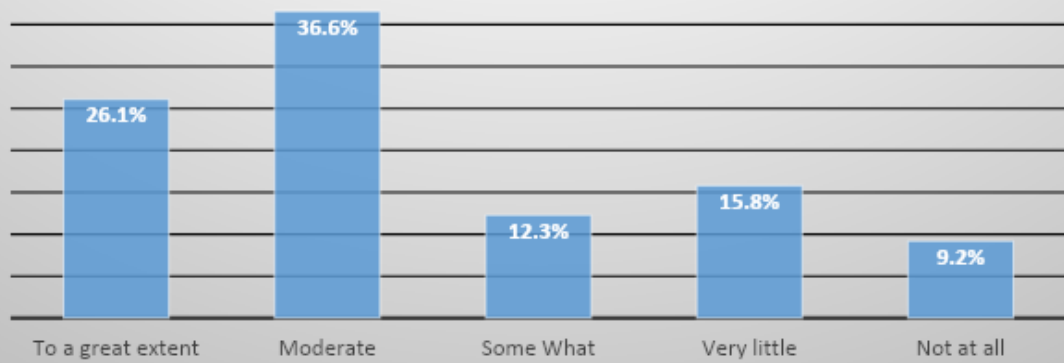
14.

15. The institution makes effort to engage students in the monitoring, review and continuous quality improvement of the teaching learning process.



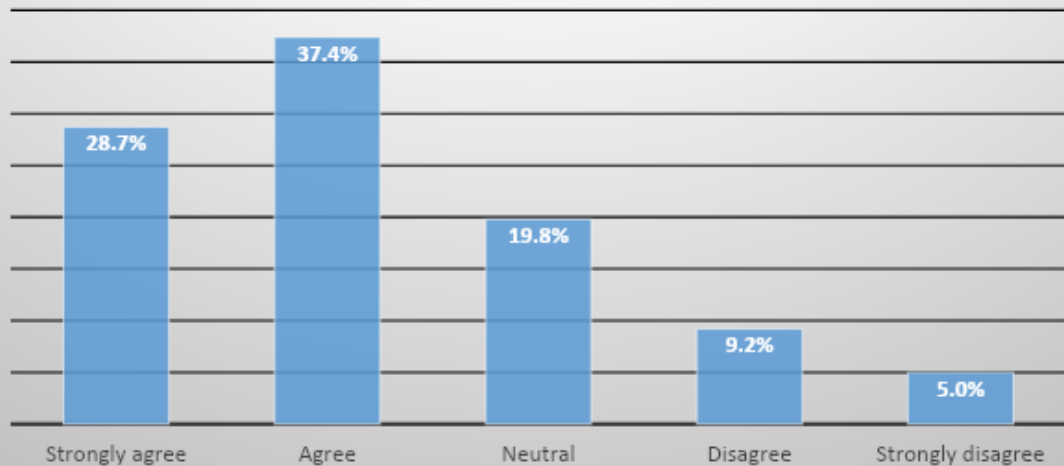
15.

16. The institute/ teachers use student centric methods, such as experiential learning, participative learning and problem solving methodologies for enhancing learning experiences.



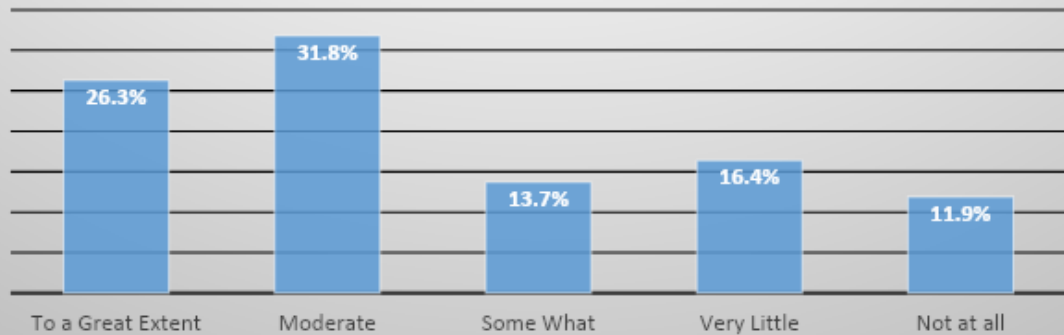
16.

17. Teachers encourage you to participate in extracurricular activities.



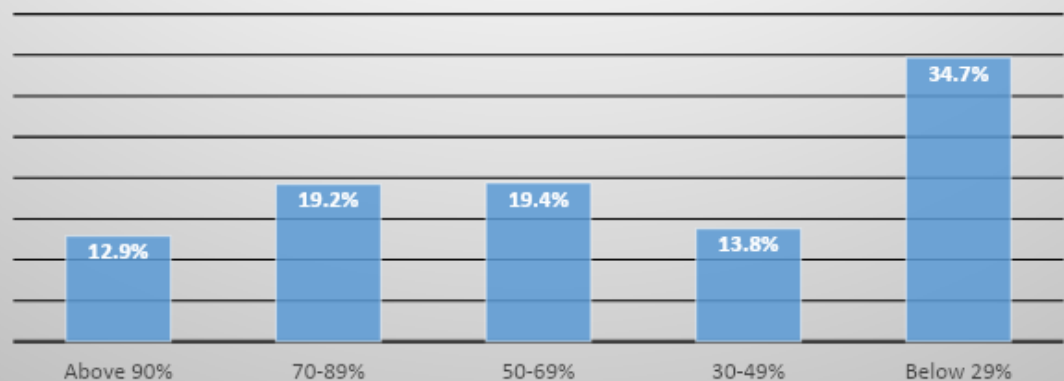
17.

18. Efforts are made by the institute/ teachers to inculcate soft skills, life skills and employability skills to make you ready for the world of work.



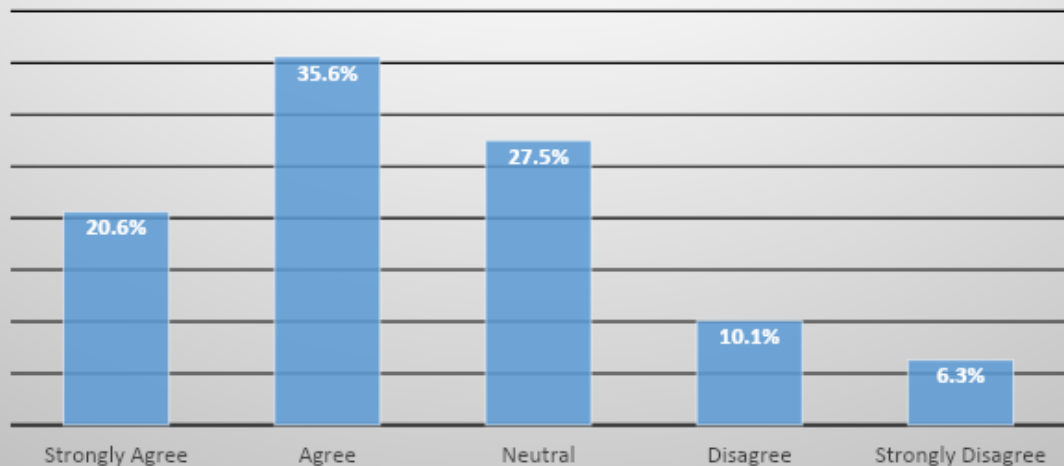
18.

19. What percentage of teachers use ICT tools such as LCD projector, Multimedia, etc. while teaching.



19.

20. The overall quality of the teaching-learning process in your institute is very good.



20.

The students are the primary stakeholders in the any educational institution and their holistic development and contentment with the functioning of the institution is the most important objective & aim for which any HEI is established. In order to gain the actual learning experiences of the students ,a questionnaire was designed by the IQAC covering all significant aspects of institutional performance and circulated amongst the students covering all the streams. The result of the survey was intended to give a glimpse of the student's feedback on the actual performance levels of different parameters mentioned in the questionnaire and check out the relevant action plan in order to take the connective measures and initiate remedial action in the desired fields.

Students gave their genuine responses to the questions asked and their feedback was recorded in google form to bring out the real picture of the efficiency, efficacy and effectiveness of the functioning of the institution.

QUESTION	RESPONSES	ACTION TAKEN
How much of the syllabus was covered in the class?		Principal directed the teachers to complete the syllabus on time while taking online classes. As students faced network issues due to their rural location they were helped with Pdf notes and audio-video lectures for the conceptual clarity and understanding.
How well did the teachers prepare for the classes?	Students were satisfied with the teacher's preparedness in delivering the lectures.	
How well were the teachers able to communicate?	Students were satisfied with the communication skills of the teachers	
How do you describe teacher's approach to teaching as	Almost two thirds of the students are satisfied with the teacher's approach to teaching.	
How do you rate the fairness of the internal evaluation process by the teachers.	Mostly students are satisfied with the fairness of internal evaluation process by	

	the teachers.	
Was your performance in assignments discussed with you?	Most of the teachers engage in giving feedback to students related to their assignments. However, teachers were communicated to make it a regular practice.	
Does the institute takes active interest in promoting internship, extension programs, field visit opportunities for students.	Students are totally satisfied in this regard.	
The teaching and mentoring process in your institution facilitates you in cognitive, social and emotional growth.	Students mostly agree on this part as they were in touch their mentors for any suggestion /advice.	Teachers were in class interaction with their mentees during lockdown times and online teaching days and principal also gave frequent directions regarding the same.
The institution provides multiple opportunities to learn and grow	Students are over all satisfied in this regard.	
Did the teachers inform you about your expected competencies, course outcomes and programme outcomes.	Students are communicated well on this matter	
Did your mentor did a necessary follow-up with an assigned task to you.		
Did the teachers illustrate the concepts through examples and applications.		Teachers adopt illustrative teaching methodology to make their teaching more effective and communicative.
The teachers identify your strengths and encourage you with providing right level of challenges.	Teachers are encouraging in this regard.	
Teachers are able to identify	Teachers close	

your weaknesses and help you to overcome them.	interaction with their students helps them at work on their student's weakness and guide them accordingly.	
The institution makes effort to engage students in the monitoring, review and continuous quality improvement of the teaching learning process.	The Institution would take initiatives to engage more and more students in the overall management of the college affairs by giving them positions in the student's centric clubs/cells/committees so that participative management can be enhanced and decisions can be based on important feedback from the students.	
The institute/ teachers use student centric methods, such as experiential learning, participative learning and problem solving methodologies for enhancing learning experiences.	Teachers use wide variety of pedagogical tools to make learning simple, interesting and knowledge based.	
Teachers encourage you to participate in extracurricular activities.	The Institution has best practices of organizing numerous extra-curricular activities and students readily participate in them.	
Efforts are made by the institute/ teachers to inculcate soft skills, life skills and employability skills to make you ready for the world of work.	More efforts are needed in this direction and placement cell has planned to organize more workshops for the students.	
What percentage of teachers use ICT tools such as LCD projector, Multimedia, etc. while teaching.	Smart classroom would be increased and teachers would be motivated to use ICT in blended mode of	

	teaching.	
The overall quality of the teaching-learning process in your institute is very good.	Students are quite satisfied with the overall teaching learning environment provided in the institution.	