

Location : Changi Circle Park

Date of inspection : 17-Jun-2020 (Wednesday)

Time : 10am-10.40am

Observation report

Soft services



There are several benches and seats that are covered with dried leaves and branches. This might affect the overall satisfaction of the people visiting the park and the view in general.

Solution : To contact the contractor to clean up the dried leaves around the facility.



There seems to be a constant soil erosion that happens here due to heavy rain and might cause some inconvenience to pedestrians crossing the underpath.

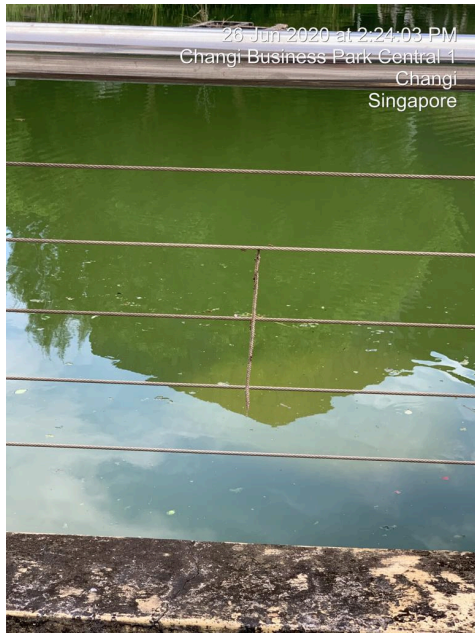
Solution : To fix a soil erosion barricade between the pathways and the soil.



Opposite of lamp post 46

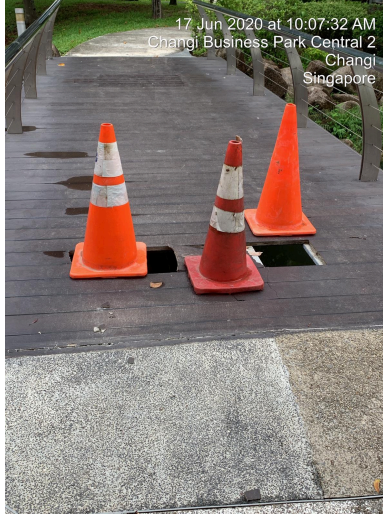
There is an overgrown tree branch extending out into the pedestrian pathway. This will obstruct the pathway of any passerby.

Solution : To call contractor to help trim the overgrown branch.



There has been small bees nest emerging in CBP and there is a need to contact Nutrinest to handle and remove the bee hives.

Hard services



The bridges at the CBP are in unfavorable conditions, shown in the pictures above. The most serious is the one shown on the second photo with 2 very deep holes. However, the bridges was sealed off immediately the next day to prevent pedestrians from walking on it.

Solution : To contact the contractor to patch up the bridge and also propose to JTC about using stronger materials for the bridge to increase its durability.



The water filters are still working and pumping out water. However, from my observation the river is on the greener side and can be muddy. The water pump might be reaching or reached its maximum filtration capacity.

Solution : We can contact the contractors to change the filters in the water pumps and also clean up algae growing on the surface of the river.



17 Jun 2020 at 10:11:51 AM
Changi Business Park Vista
Changi
Singapore

The old water filtration system underneath the road bridge is still working and is helping carry the load of the filtration.



17 Jun 2020 at 10:24:07 AM
12-26 Changi Business Park Central 2
Changi
Singapore

From the photo, there is a remains of a dead fish that fell into the drain. And the cause of it is due to heavy rain which increases the volume of the river and causing the fish to jump over the wall that separates the drain and the river.

Solution : Propose to JTC to build a net on top of the drain to prevent the fishes from going into the drain and also helps to conveniently put the fish back to the river. This in return will also help to reduce the chances of buying more fishes and putting them into the river.