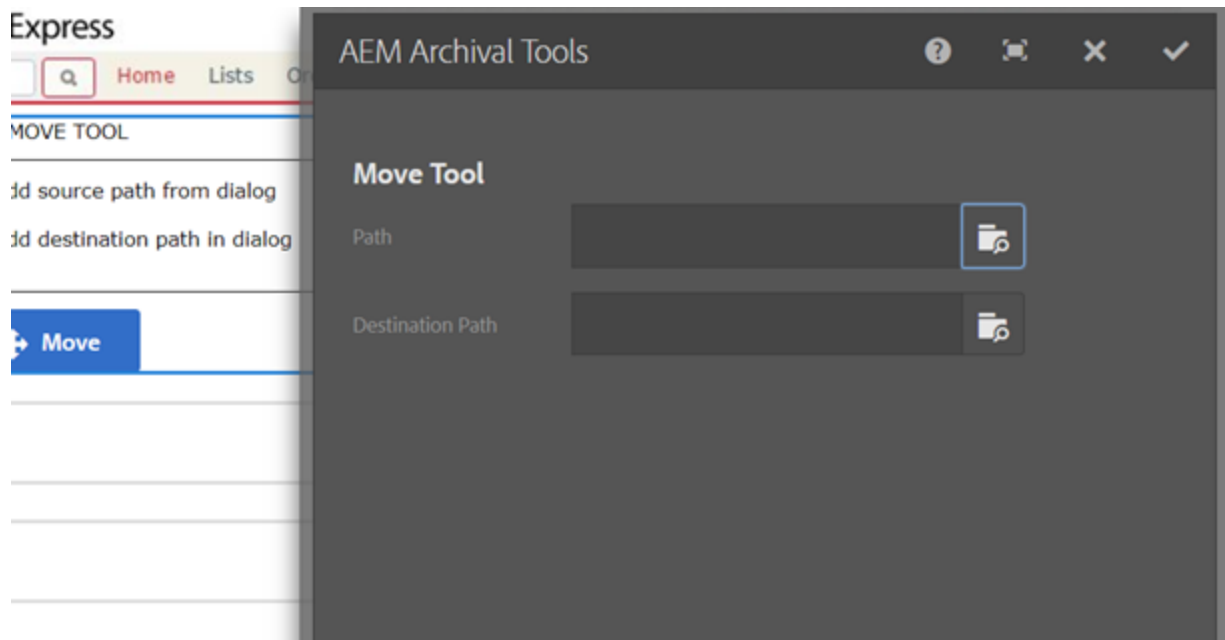
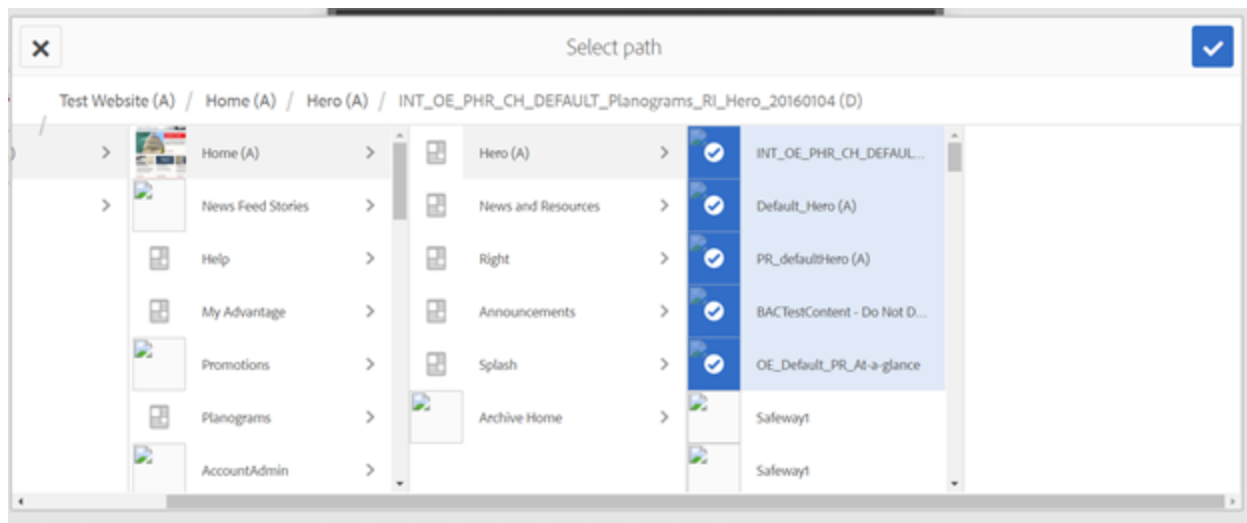


See the source and destination as selectable browse components



Select the multiple content/Campaigns/Segments



See the selected items in the page after clicking the confirm button in the path browser

AEM MOVE TOOL

Source Path/Paths:

/content/oe/home/hero/INT_OE_PHR_CH_DEFAULT_Planograms_RI_Hero_20160104


/content/oe/home/hero/Default_Hero

/content/oe/home/hero/PR_defaultHero

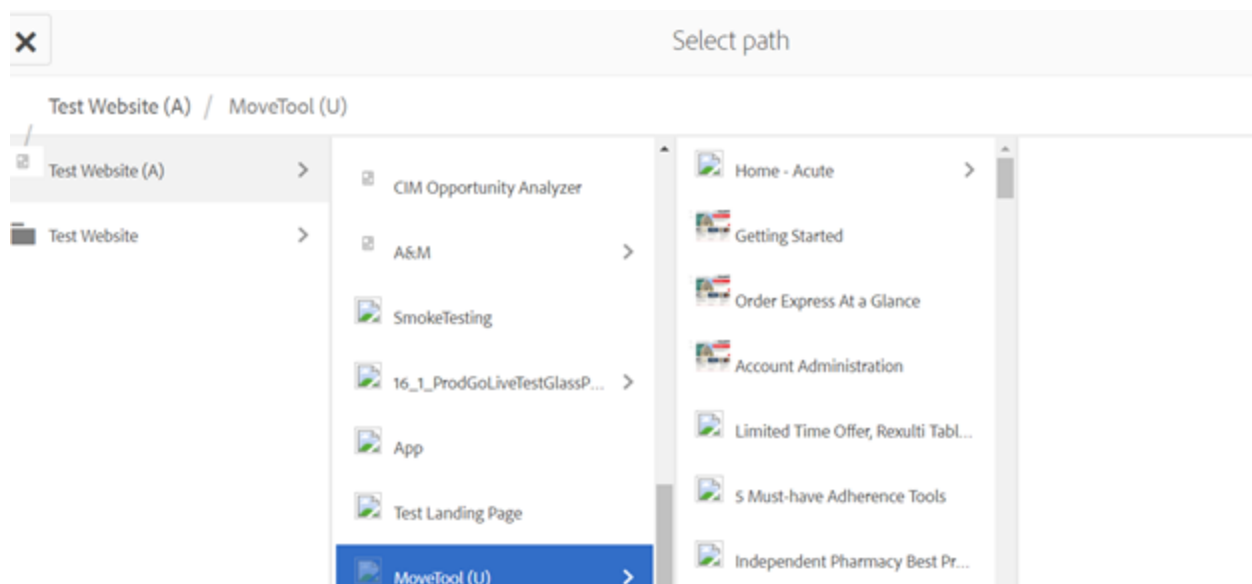
/content/oe/home/hero/BACTestContent

/content/oe/home/hero/OE_Default_PR_At-a-glance

Add destination path in dialog

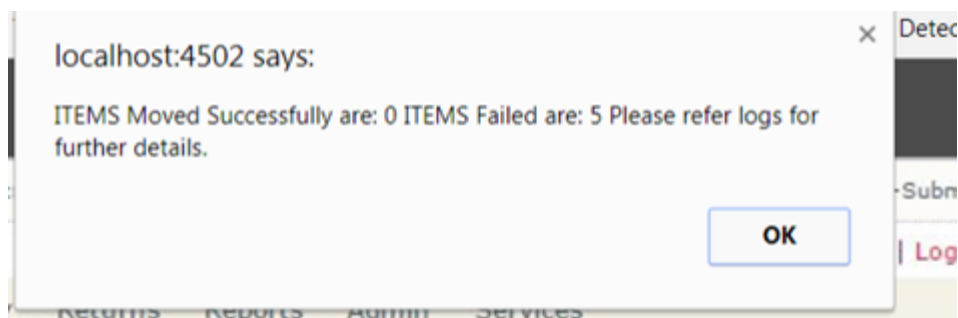
 Move

Choose the destination now:

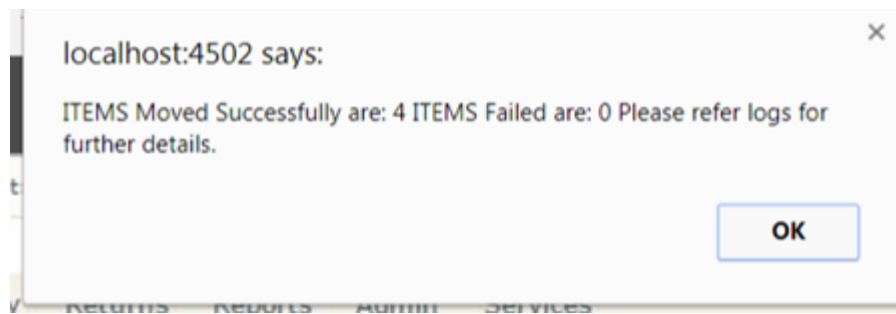


After that hit the mov button on the page:

If fails:



If success:



Am also showing the items status when clicked on the label:

A- Active.

D- De active.

U – Undefined.