

YONDR

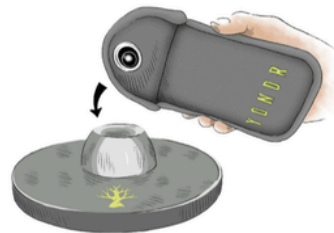
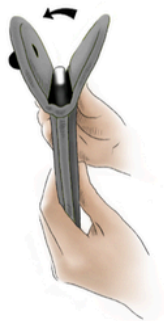
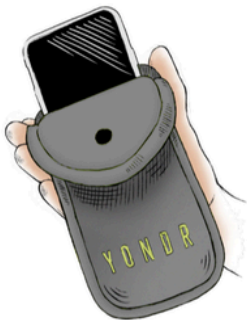
Chariho Middle School FAQ

[About Yondr](#)[Procedures](#)[Emergencies](#)

ABOUT YONDR

What is a Yondr pouch?

- The Yondr Pouch is a secure bag that stores an individual's mobile device or devices. It is secured and then unlocked with a special magnetic locking device.



Why is the school introducing Yondr pouches?

- The middle school is seeking to limit distractions in the classroom and improve overall student engagement, mental health, and well-being.
- Yondr pouches will help CMS comply with Rhode Island legislation [2025-S 0771A](#) and [2025-H 5598A](#).

Requiring students to lock their phones away seems like a punishment for middle school students. Is this the case?

- The introduction of Yondr is not a punitive measure. The intention of Yondr is three-fold:

- to create classroom environments where teachers can teach and students can learn free from distractions caused by the personal use of devices;
- to reduce the negative impacts for ALL students of inappropriate use of devices at school, such as cyberbullying, exposure to harmful content, and incidents involving mobile phones that detract from a healthy school climate; and
- to increase meaningful face-to-face connections between students.

What tools will the school use to help gauge the effectiveness of the Yondr pouches?

- The district will use quantitative and qualitative data to assess Yondr's effectiveness in improving the student experience. This includes School Climate Survey data, discipline referrals, faculty, staff, and School Improvement Team feedback.

How much will Yondr cost?

- Yondr is being provided to CMS through a grant. However, the replacement cost to families is \$40 per lost or damaged pouch.

Do the Yondr pouches block cell signals or the internet?

- Yondr pouches do not block cell signals or the internet. The company is looking at upgrading pouches to include RFID chips that could enable blocking. However, that technology is currently unavailable at Yondr.

PROCEDURES

If my child keeps her phone in her locker, are these pouches still required?

- All students will be required to use the Yondr pouches.

If my child does not use these pouches, what, if any, are the disciplinary actions?

- If a student does not use the Yondr pouch, CMS will follow the Student Handbook if any devices (cellphone/smartwatch/earbuds/etc.) are seen.

If my child does not produce a phone, AirPods, or smartwatch upon entering school, what happens then?

- If students do not produce any of the required items upon entering the building, staff will assume that they did not bring any of these items to school. If, later in the day, the student is using any of these devices, staff will follow the Student Handbook.

What happens if the students forget the pouches? Whether it is once in a while or repeatedly?

- If a student forgets their pouch, they will be asked to lock these items in one of two phone lock boxes located in the Dean's Office.

How will students receive a Yondr pouch?

- All students in grades 5-8 will be assigned a Yondr pouch to secure their phone, smartwatch, Bluetooth earbuds, etc. The pouch is the property of the school and is considered on loan to the student during the school year. Students are responsible for the Yondr pouch at all times, bringing it to and from school each day and keeping it in good condition.

How will students know whose Yondr pouch is whose?

- The pouches will be distributed and each student will be assigned a pouch with a number and their name/team. Staff from Yondr will work with school administrators to ensure a smooth distribution process. Students will keep their pouches with them at all times. Pouches may also be kept in the student's locker.

How will the process work at arrival and dismissal?

- As students arrive at school, they will:
 - 1) Turn their devices (phone/smartwatch/earbuds/etc.) on airplane mode or power down. In order to track for a lost phone, it must remain in airplane mode.
 - 2) Place their devices inside their pouch and secure it in the presence of school staff.
 - 3) Store their pouch where it is most convenient for them: in their backpack or locker.
- At the end of the day, students will unlock their pouch with the magnet provided. Students are responsible for bringing their pouch to school with them each day.

What if a student needs to leave the building before regular dismissal?

- If a student needs to leave school early for an approved early dismissal, medical emergency, work assignment, athletic event, or other school-sponsored trip, students will be able to unlock their devices at school just prior to their departure. If returning to school during the instructional day, the Yondr pouch would be locked upon re-entry to the building.

How many Yondr stations will there be and where will they be located?

- CMS will have a station in the Main Office, mounted stations at exits, and hand-held stations at dismissal.

If a student forgets to unlock the pouch before leaving the building, is there a way for students to unlock the pouch – ie an unlock station outside the school building?

- There will not be an unlocking station outside the building. If the student forgets to unlock their pouch, they will be able to return to school before 3:30 pm to unlock it.

Will my student's electronic devices be safe?

- Electronic devices will be locked in the Yondr pouch and kept within the possession of individual students.

If the Yondr pouch is stolen/lost, who is responsible for replacement?

- Students will ultimately be responsible for the care of their Yondr pouch. If a student loses or intentionally damages the pouch, they will be responsible for replacement and may face disciplinary consequences. The replacement fee is \$40 per pouch.

What if a student does not comply or damages the locked case to access their phone?

- Students who are found to unlock the pouches, cause damage to the pouch, or use an alternate phone will be addressed through the Standards of Student Behavior found in the Student Handbook or online at:
https://www.chariho.k12.ri.us/district_information/policies_and_procedures. The replacement fee is \$40 per pouch.

What happens if a student doesn't have their Yondr Pouch?

- The phone will be turned over to staff and secured in the school (i.e., the Deans' Suite) where it will be kept safe until the end of the school day.

Will my student still be able to listen to music?

- Students can use headphones with cords to connect to their Chromebooks. They will be able to use the headphones for classroom work. All Bluetooth devices, including AirPods, smartwatches, and other headphones, must be stored in the Yondr pouch.

EMERGENCIES

What if a parent or guardian needs to reach their child during the school day?

- We understand that emergencies will occur. Parents may contact the main office at (401) 364-0651 to speak with their child if needed.

What happens if there is an emergency at school?

- Every location in the middle school is equipped with a phone that can dial 911. Our staff is trained to execute safety and emergency procedures. Students will follow the school's emergency procedures in the case of an emergency. Schools will communicate with parents/guardians through the district's mass notification and communication tools.

What if a student needs their personal device for a medical issue?

- Students who have a documented medical condition and who need a personal device to monitor their condition will be provided with a non-locking Yondr pouch with a velcro seal.

How will students be able to contact families if there is a lockdown or active shooter situation?

- Students and staff practice lockdown drills throughout the year. Students and staff are instructed to be silent during a lockdown. The middle school's building-level safety plan has a community notification plan for all emergency situations. This notification plan prioritizes contacting parents and guardians of students in the building.

What if my child is at school and needs to call 911?

- Every classroom is equipped with a phone that can dial 911. There are no codes or prefixes needed to dial outside of the district. Anyone can dial directly.

Why can't the school just implement a zero-tolerance policy and allow students to keep their phones put away?

- CMS is a phone-free learning environment. However, enforcing this practice becomes the burden of classroom teachers when students do not comply, and valuable instructional time is lost as these issues are addressed.

What if there is a building-wide emergency and students cannot return to the building? How will they open their Yondr pouch?

- Mobile unlocking devices will be available for these types of circumstances.

(Modified from <https://www.bethlehemschools.org/yondr-frequently-asked-questions-faq/>)

Updated 07/29/2025