

# TORG 62 MILE SPECIAL INSTRUCTIONS / CAUTIONS

## GENERAL ADVISORY

Three bottles of water are recommended between all distances as well as using the bathroom before starting.

Riders must wear a helmet.

Airpods and headphones are not recommended. If being used, we suggest low volume.

Riders must adhere to the Rules of the Road.

We encourage riders to make decisions based on their skill level.

## REST STOP DISTANCES

- Rest Stop 1 is 21 miles away from the start.
- Rest Stop 2 is 11.5 miles from Rest Stop 1.

## RETURNING VIA RAIL RUNNER EXPRESS

One can always take the RAIL RUNNER EXPRESS back to the starting point from [LOS LUNAS TRANSIT CENTER](#) or [BELEN RAIL RUNNER STATION](#). The northbound train times (AT THE TIME THIS WAS WRITTEN) are as follows:

From Belen - 7:24A, 12:30P and 5:40P.

From Los Lunas - 7:34A, 12:40P and 5:50P. Puts you back at the start (Bernalillo County / International Sunport Station) at 7:53A, 12:59P or 6:09P.

## RIDE CAUTIONS

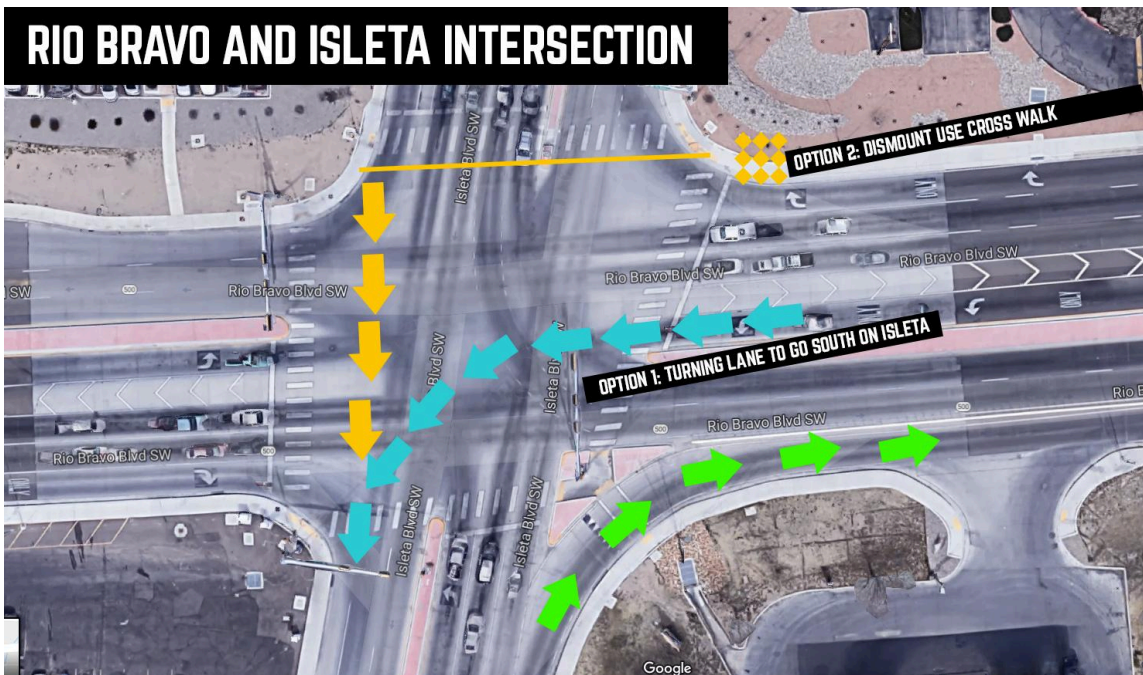
### Corner of RIO BRAVO and ISLETA BLVD (ABQ)

This is a traffic heavy intersection after 9 am. Use caution turning left (teal arrows) or pull over onto the sidewalk and use crosswalk (orange diamonds and arrows) to get to the south moving traffic lane of Isleta. Green arrows are to show where a rider returns.

## RIO BRAVO AND ISLETA INTERSECTION



## RIO BRAVO AND ISLETA INTERSECTION



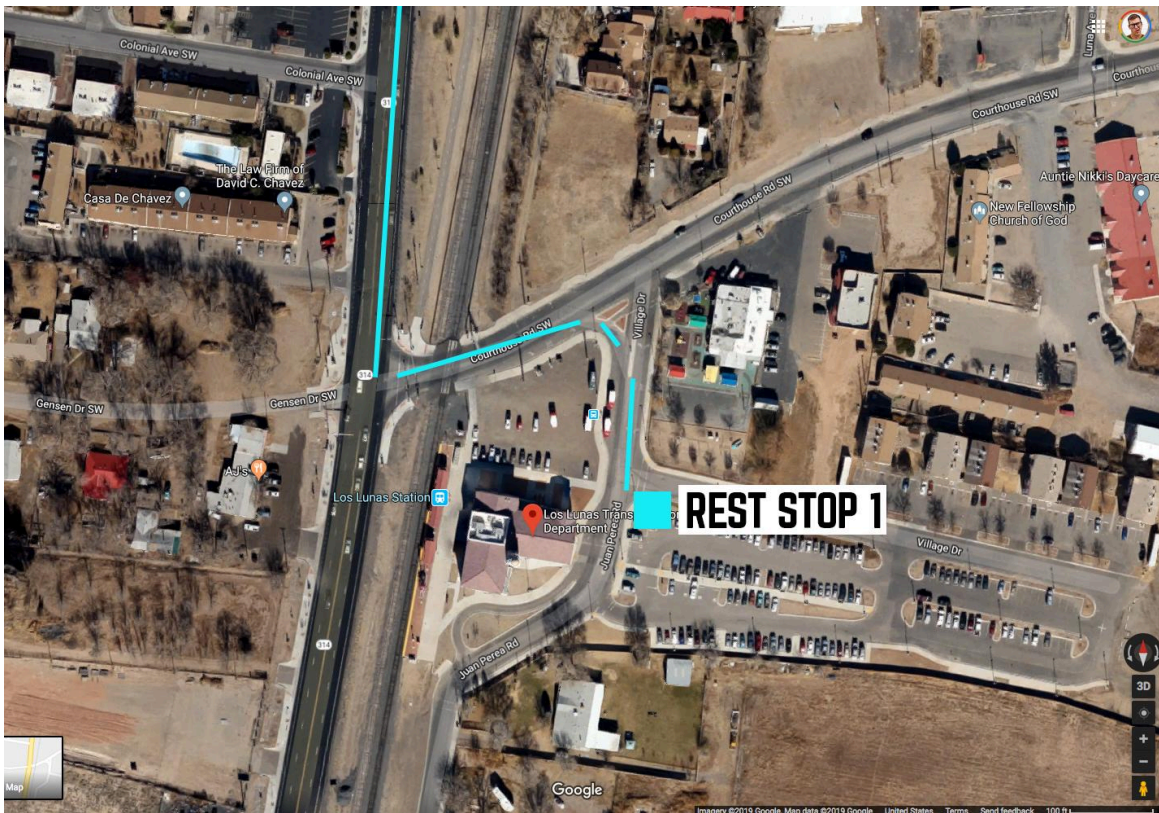
### Isleta Blvd SW

Isleta Blvd SW is a beautiful stretch of the ride; however, in recent years the road has become a little rough. We contact Bernalillo County to sweep the road before the ride. Be aware that this patch will be rough till they repave it in late 2023 or early 2024.

### Rest Stop 1 – Los Lunas Rail Runner Station

Turn left onto Courthouse Dr, then immediate right on Juan Perea rd. Rest stop in the parking lot. It is not easily seen from NM-314. There will be signage.





# NM-314 Left Onto Frontage Road (Belen)

Heading south from Rest Stop 1, riders will need to turn left before the Belen Overpass. Riders at times miss this important turn as the overpass is dangerous and off-route. See the green arrows below. There is a staff member flagging riders at this turn till about 10 or 11 am.

