

long awaited kinlist update

no one gaf

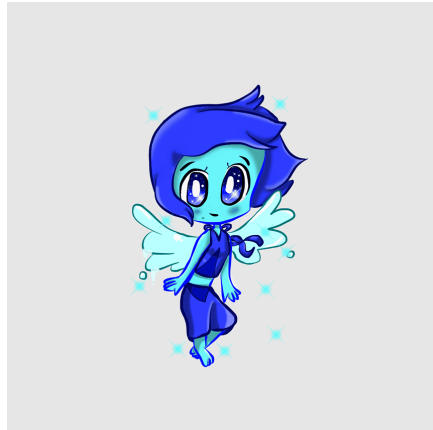
no particular order here i aint doing allat
will be describing how much i connect with the character in some



amity blight

ok you all saw this coming my name is literally amity
but umm all that aside i am generally just similar to her. except i don't do
well at school or anything. i relate to the more Cringefail aspects of her (i
am autistic will that explain it well enough)
i like her aesthetic. she literally decorates her little hideaway (and room)
with space stuff, isn't that so me coded!

i love pointing at my screen when i see her and going like "hey that's me!"
jokingly, i connect to her the most out of all my kins but that doesn't
mean i connect to her that much honestly, she is just funny



bob (lapis lazuli)

ok im reading through her wiki because i haven't touched steven universe
in ages

trust issues! Oh my god im dead on the floor reading this wiki
okay, all i can say is trauma. she's very traumatised
expresses a desire for control but once she has it in her grasp feels
scared it'll go out of control, regrets actions she's done in the past to a
point where it borders on self hatred
when facing something stronger than her she just Gives Up and believes
that struggling will only make things worse, and is very easy to hold up
grudges against things that stand against her
usually displays an extremely laid back personality and generally does not
care about anything due to the trauma she's gone through
overall, What the fuck.

i see myself in her a lot personally, she is just like me!



goro akechi (art cred: 2020 me :3)

Teammates!? Friends!? To hell with that! Why am I inferior to you...!? I was extremely particular about my life, my grades, my public image, so someone would want me around! I am an ace detective... a celebrity! But you... You're just some criminal trash living in an attic! So how!? How does someone like you have things I don't!? How can such a worthless piece of trash be more special than me!?

okay. where do i even start

he yearns to be loved and accepted by people to a point where he puts up a fake image of himself to acquire it. but at the end just drops that image and straight up doesn't care about what people think of him because everyone already saw what hes actually like. okay that's literally it he has a deeper character to him but i mostly just relate to those aspects



BET YOU DIDN'T SEE THIS COMING (amethyst)

amethyst hates herself so much that i could not help but relate! beneath her loud and carefree personality she believes that she is inferior to the other crystal gems, struggles to think for herself and worries for others approval

im just taking words off her wiki but when her self doubting takes effect she becomes cold, reckless, and a bit stubborn and does things to like.

make herself feel better or something, to feel a bit less inferior.

when i watched the show i was like "Wow literally same girl" ots funny idk