

2 double bedroom apartment to let - £2000 pcm

Mansfield Heights

Great North Road, London, N2 0NY

Spacious and bright 2 double bedroom apartment on the second floor in the purpose-built block in East Finchley. The flat has been redecorated and benefits from a spacious reception room, separate fitted kitchen, gas central heating and plenty of storage space.

The property is ideally situated near East Finchley Northern line underground station, as well as restaurants, coffee shops, and boutique independent grocers.

Available from **1 December 2025**

Partly furnished:

2 double beds + mattresses'

1 fitted and 1 freestanding wardrobe, 2 chest of drawers

Table with 2 chairs

Property features

- 2 Double Bedrooms
- Reception Room
- Separate Kitchen
- Large Entrance Hall
- Bathroom
- Separate Storage Cupboard
- Entryphone System
- Extensive Communal Gardens
- Off-street parking (first-come, first-served)
- Service charge included in monthly rent

2 double bedroom apartment to let - £2000 pcm

Mansfield Heights

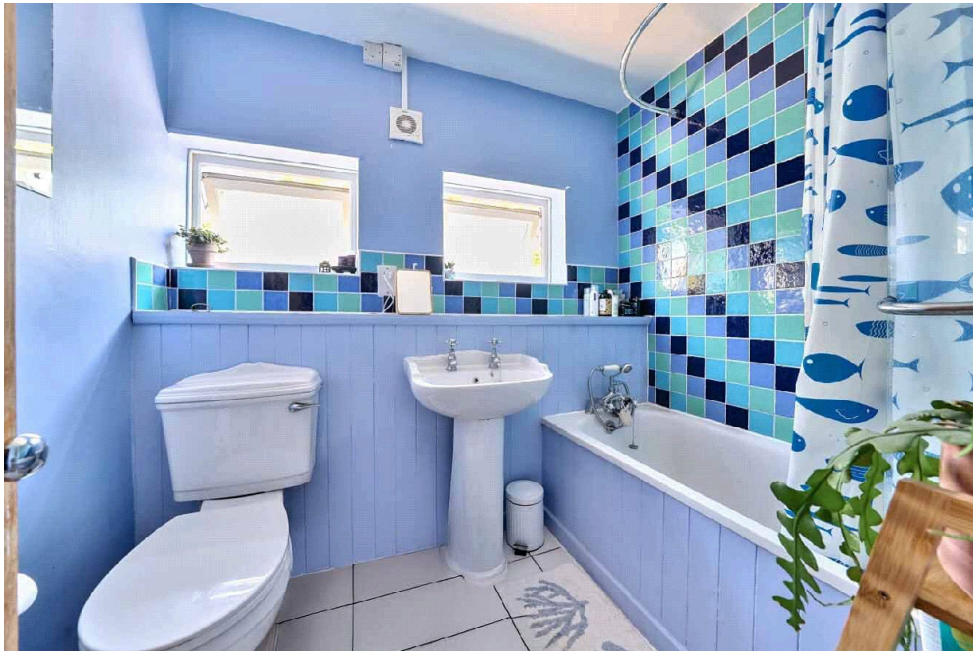
Great North Road, London, N2 0NY



2 double bedroom apartment to let - £2000 pcm

Mansfield Heights

Great North Road, London, N2 0NY



2 double bedroom apartment to let - £2000 pcm

Mansfield Heights

Great North Road, London, N2 0NY



2 double bedroom apartment to let - £2000 pcm

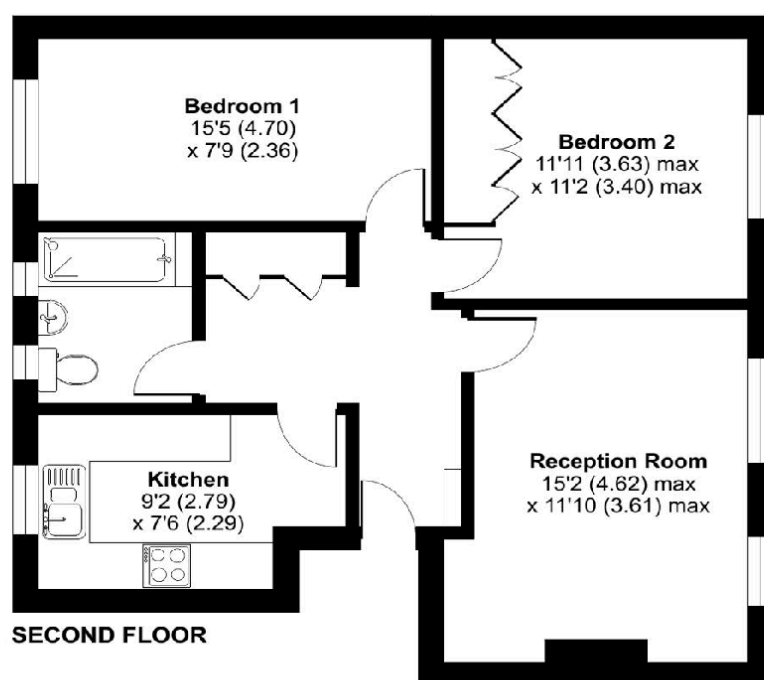
Mansfield Heights

Great North Road, London, N2 0NY

Great North Road, London, N2

Approximate Area = 675 sq ft / 62.7 sq m

For identification only - Not to scale



Score	Energy rating	Current	Potential
92+	A		
81-91	B		
69-80	C	77 C	77 C
55-68	D		
39-54	E		
21-38	F		
1-20	G		