

About Respondus Lockdown Browser

Respondus Lockdown Browser is used to prevent students from using the device from which they are working to use any program other than the exam they are taking for their course in Canvas. This tool is optimal for a proctored environment because students can still use additional devices or smartphones to access the internet while taking the exam.

This tool must be downloaded onto the student's device, and also must be enabled in the quiz options when the instructor creates the quiz.

Software Limitations

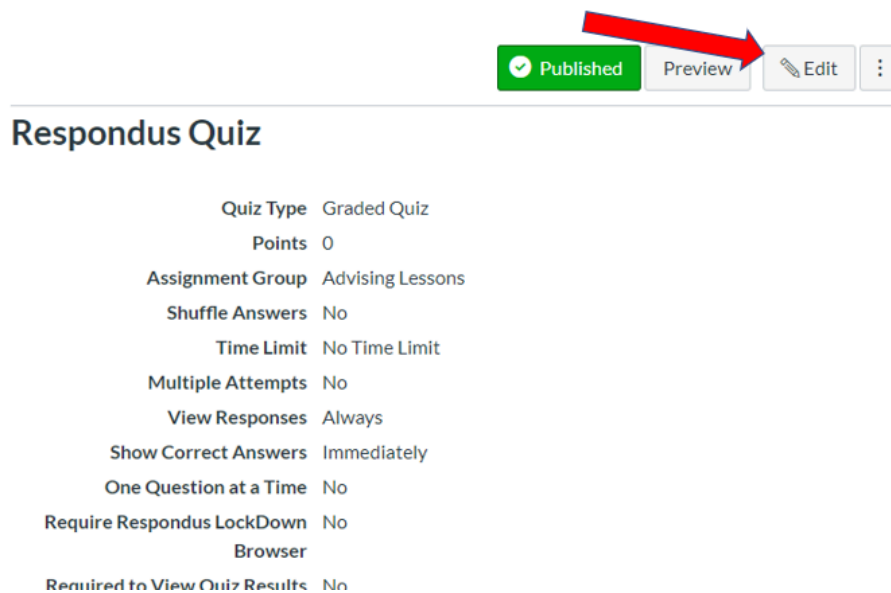
This program doesn't work for Chromebooks.

Setting up Respondus Lockdown Browser Requirement in Canvas Quizzes

Sign in to your Canvas Course

Access the quiz to enable the Respondus Lockdown Browser

Select the Edit button




From the Quiz Details section in edit mode, scroll down to the section titled **Quiz Restrictions**.

Quiz Restrictions

☐ Require an access code

☐ Filter IP Addresses

 ☒ Require Respondus LockDown Browser

☒ Required to view quiz results

Select “Require Respondus LockDown Browser” to require students to use this tool to take the test. If you enable students to receive feedback in the test settings, you can also enable the requirement that they view the quiz results through Respondus Lockdown Browser.

What the student sees

When a student accesses the Lockdown Browser-enabled quiz, they will be given the following instructions:

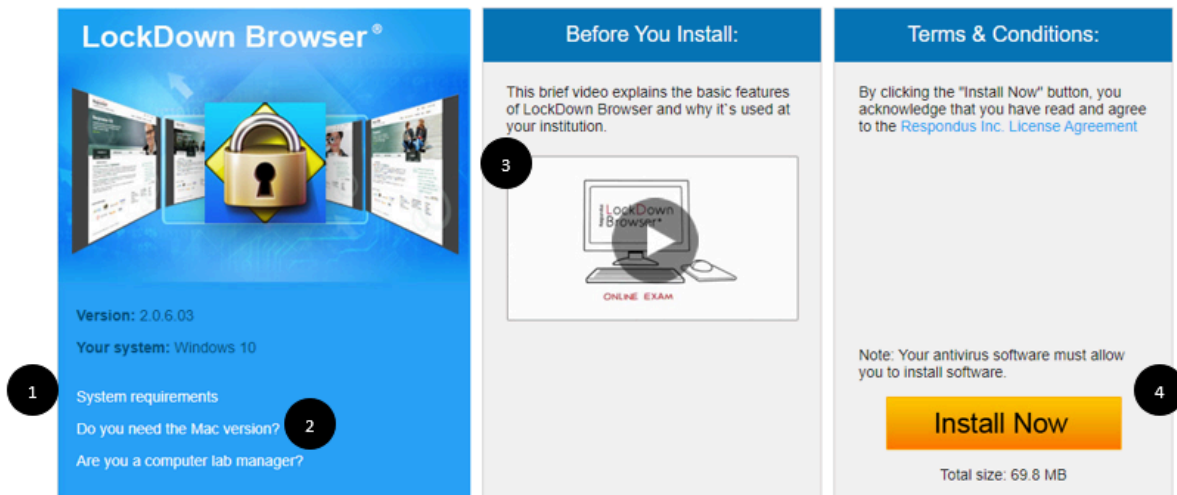
Respondus Lockdown Browser Required:

This quiz requires Respondus LockDown Browser. Please launch Respondus LockDown Browser to take this quiz or view your quiz results.

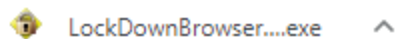
If you have not already installed the browser, please download it from here: [\[Download Respondus Lockdown Browser\]](#)

When a student accesses the download link above, they will see the following information:

1. System requirements
2. Toggle link for accessing the Mac version
3. A brief overview of the functions of the software
4. Installation instructions

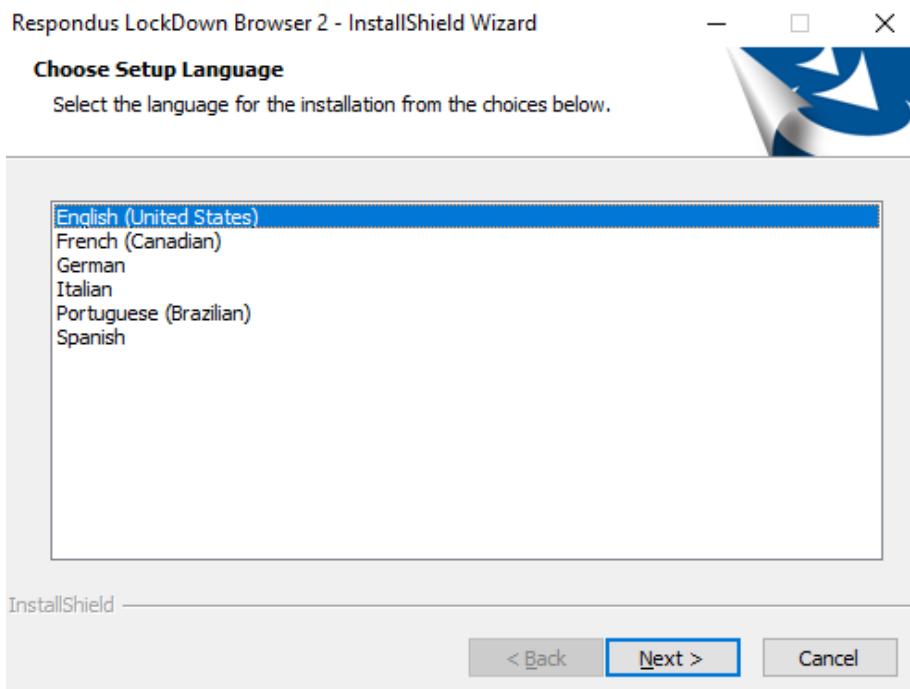


When the student selects "Install Now" their computer will begin downloading the software from their browser:

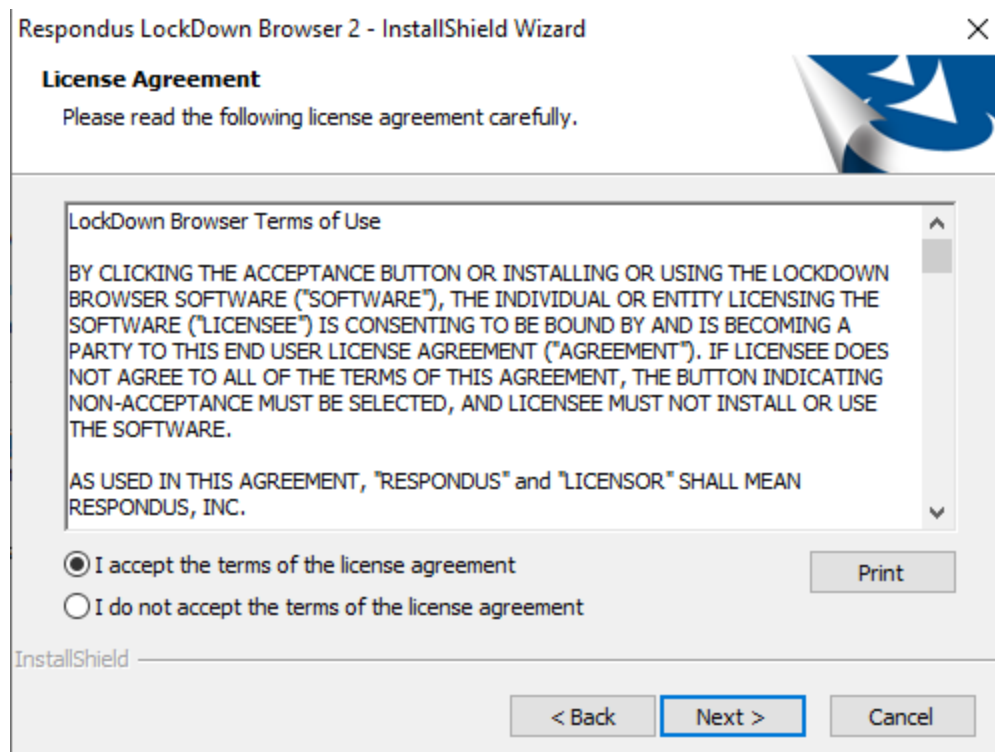


When the student runs the program, their system will ask if they want the program to make changes to their device. Students will select "Yes."

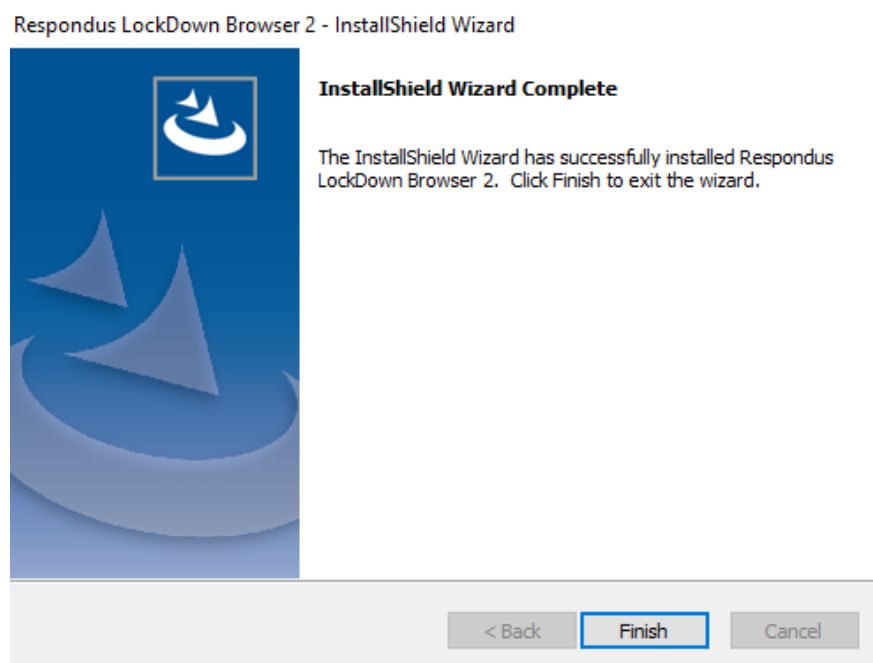
Students will set up the language for their Respondus program:



Students will be asked to accept the terms of use:



Students will select "Finish" to complete the process.



Students should close all programs on their device before running Respondus Lockdown Browser. Before they begin, it may be helpful to restart their device so no programs are running in the background. Upon the activation of this tool, Respondus Lockdown Browser will attempt to close any programs that are running on the device.

When the browser begins, it should automatically take students to the Canvas login page. Students will enter their credentials to sign in, locate the course, and Respondus-enabled quiz. They will now be able to complete the exam.