

## Electronic Integrated Computer Algorithm

Name A<sup>1\*</sup>, Name B<sup>2</sup>, Name C<sup>3</sup>

<sup>1</sup> Affiliation, address, Country.

<sup>2</sup> Affiliation, address, Country.

<sup>3</sup> Affiliation, address, Country.

DOI : 10.62123/enigma.xxx.xx

### ABSTRACT

**Received** : April 29, 2024

**Revised** : May 06, 2024

**Accepted** : June 09, 2024

#### Keywords:

Key word 1, Key word 2, Key word 3,  
Key word 4

Detailed instructions for preparing your submitted paper. Please be responsible for the quality and appearance of your work. It is highly recommended that you type directly in the template or simply cut and paste from another document and use the markup style. Please remember during preparation, do not change the page settings in this template, such as font, line spacing, margins, upper- and lower-case letters, section order, etc. The abstract section is mandatory, with a word limit of 200 words. The scope, objectives, results and conclusions can be summarized here. Avoid inserting any references in this section. In the Keywords section, please enter words or phrases in alphabetical order. There is a maximum of 5 keywords.

## 1. INTRODUCTION

The introduction contains the background and research objectives briefly and concisely. Theoretical support is included in this section, it can be stated that similar research has been carried out. Note: Manuscripts are typed on a computer using Times New Roman (Doc) font, two columns, active Paper size 21 cm x 29.7 cm (A4), 1 space, and Times New Roman 10-point font. There Top and bottom margins must be 2 cm, with right and left margins 1.27 cm long.

## 2. LITERATURE REVIEW

### 2.1 Sub Literature Review

A literature review is a survey of scholarly sources (such as books, journal articles, and theses) on a particular topic. It gives an overview of key findings, concepts and developments in relation to a research problem or question. All tables should be numbered with Arabic numerals. Every table should have a caption. Headings should be placed above tables, left justified. Only horizontal lines should be used within a table, to distinguish the column headings from the body of the table, and immediately above and below the table. Tables must be embedded into the text and not supplied separately. Below is an example which the authors may find useful.

Table 1. Table title

Heading1	Heading 2	Heading 3
Preprocessing	Result preprocessing	Data preprocessing

## 3. RESEARCH METHODS

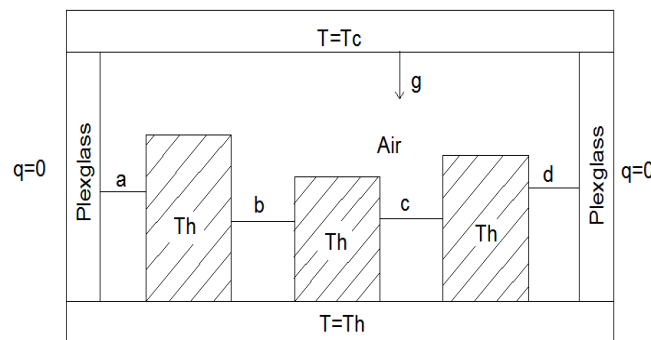
This section contains a complete and detailed description of the steps undertaken in conducting of research. In addition, the research step also needs to be shown in the form of flowchart of research or framework step in complete and detailed including reflected algorithm, rule, modeling, design and others related to system design aspect. Do not begin a new section directly at the bottom of the page, instead, move the heading to the top of the next page. Please use either the Microsoft Equation Editor or the *MathType* add-on (<http://www.mathtype.com>) for equations in your paper (Insert | Object | Create New | Microsoft Equation *or* MathType Equation). "Float over text" should *not* be selected. Format: The size of equation is 10 pts. Remember to leave 10 pt spacing both above and below an equation.

$$x_{1,2} = \frac{-b \pm \sqrt{b^2 - 4ac}}{2a} \quad (1)$$

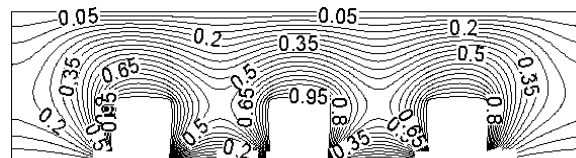
#### 4. RESULTS AND DISCUSSIONS

Results and Discussion is a section that contains all scientific findings obtained as research data. This section is expected to provide a scientific explanation that can logically explain the reason for obtaining those results that are clearly described, complete, detailed, integrated, systematic, and continuous. The discussion of the research results obtained can be presented in the form of theoretical description, both qualitatively and quantitatively. In practice, this section can be used to compare the results of the research obtained in the current research on the results of the research reported by previous researchers referred to in this study. Scientifically, the results of research obtained in the study may be new findings or improvements, affirmations, or rejection of a scientific phenomenon from previous researchers. Please make sure that the captions are on the same page with the relevant figures and tables. Please keep captions short – taking preferably one line. If a caption is a complete sentence, place a period at the end of it. If not, then place no punctuation at the end.

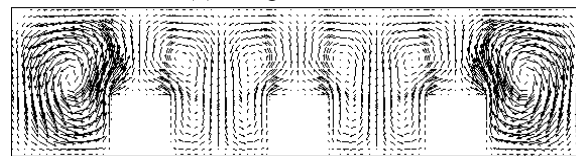
Images and captions should be centered. Every word, number, shape and symbol in the image should be visible when the page zoom level is at 120%. Some examples cited are as follows. Please pay special attention to how much line spacing is allowed in various cases:



**Figure 1.** Cavity geometry



(a) Temperature field



(b) Velocity vector field

**Figure 2.** Three heat sources

#### 5. CONCLUSION

This section contains conclusions and suggestions. Conclusion is a brief, clear, and precise statement of what is obtained contains advantages and disadvantages, can be proven, and directly related to the purpose of research. Suggestion is a follow-up study that is still needed to refine the results of research in order to be efficient.

#### REFERENCES

The References list contains only the literature that is really referred to in Times New Roman 10-point paper. The main references are international journals, proceedings and books. All references should be to the most pertinent, up-to-date sources and the minimum of references are 25. Policy that self citation is max 20%. The style of IEEE using in-text and reference list citations. The use of Mendeley, end note or other citation tools are very recommended. You may imitate the following examples to prepare your references:

- [1] C. Legner *et al.*, “Digitalization: Opportunity and Challenge for the Business and Information Systems Engineering Community,” *Bus. Inf. Syst. Eng.*, vol. 59, no. 4, pp. 301–308, 2017, doi: 10.1007/s12599-017-0484-2.
- [2] R. Spoth *et al.*, “Addressing Core Challenges for the Next Generation of Type 2 Translation Research and Systems: The Translation Science to Population Impact (TSci Impact) Framework,” *Prev. Sci.*, vol. 14, no. 4, pp. 319–351, 2013, doi: 10.1007/s11121-012-0362-6.
- [3] E. W. N. Bernroider and M. Ivanov, “IT project management control and the Control Objectives for IT and related Technology (CobIT) framework,” *Int. J. Proj. Manag.*, vol. 29, no. 3, pp. 325–336, 2011, doi: 10.1016/j.ijproman.2010.03.002.
- [4] Sahrul and E. L. Hadisaputro, “Evaluation of Yankel Services Using Dss and Mea Domains Based on the 2019 Cobit Framework (Case Study of Kelurahan Manggar),” *Seminastika*, vol. 3, no. 1, pp. 138–145, 2021, doi: 10.47002/seminastika.v3i1.264.