

LUU WEEKLY NEWS

[LUU Website](#)

[Learning](#)

[Intranet](#)

[What's On](#)

Welcome to LUU Weekly News.

Hello and Farewell

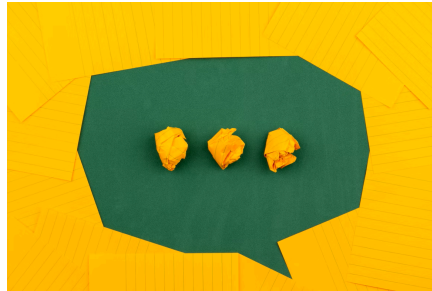


This week, we would like to give a warm welcome to
Rivea Jefferson who is joining the Academic Engagement Team as a **Student Communities Coordinator (Academic Engagement)**
Jessica Garnham who is joining us as the **Director of Marketing & Communications (Maternity Cover)**
Charlotte Brennan who is joining the Finance Team as the **Student Groups Finance Assistant**
Sanath Sha who is joining the Activities Team as the **BUCS Admin Assistant**
Fabiha Chowdhury who is joining the Political Engagement Team as a **Student Communities Coordinator (Policy & Campaigns)**
Erica Wood who is joining the Political Engagement Team as **Student Communities Coordinator (Liberation)**

Aruno Hopstone and **Chameli Samaranayake** who are joining the Cleaning Team as **Facilities Assistants**.

This week we sadly say farewell to **Beth Cunningham** who is leaving us to pursue a PhD. We wish you the best of luck on your new journey.

Pulse Survey



Please complete our latest Pulse Survey. This is important for Managers to understand how their staff team are feeling and set actions to benefit the team in the future.

We have added a short section at the end of the Pulse survey, this is to collect data to feed into our alignment project and focuses on pay. The questions being asked here replicate the questions on pay in the NUS staff engagement survey which goes out to SU's across the UK. This will allow us to compare our current transparency on pay at LUU as we start the project.

The survey will close on **20th October**

[Click here to take the Survey](#)

WU Fest Staff Call Out



The World Unite Festival (**WU Fest**) is coming to celebrate the diversity of Leeds. To capture the breadth of cultures in Leeds, the festival will offer a great selection of activities, including singing, dancing, language exchanges, workshops, food, academic presentations and discussions. Each event will encourage you to consider differing perspectives on a variety of topics relevant to internationalisation.

WU Fest is an opportunity for UK Students and International students to make friends and share their culture, faith and traditions

This term we are hosting the Winter World Unite Festival From the **Mon 18th November - Friday 22nd November**. The main venue will be the LUU Building and the Winter Tent.

You can see last year's lineup [here](#).

We'd love for WU Fest to be a Union wide event and would love to invite you all to be involved! Maybe you're interested in collaborating on an event or activity with us, maybe you're already running a project that week that could fit with our programme or you just want to come along to an event, we'd love to have you!

If you're interested in being involved or have an idea you'd like to suggest/work with us please get in contact with either [Natasha Pickle](#) or [Elektra Kaldeli](#).

Women's Collective Network Members' Meeting



On **Tuesday 8 October**, from **3:30pm-4:30pm** in the Martin Luther King Office, the Women's Collective Network will be holding a members meeting. This is an opportunity to catch up with fellow members, discuss what's coming up and see what members would like the Network to do over the next term.

This meeting will be hybrid. To find out more or get the meeting link, please contact Katie Fox (K.Fox1@leeds.ac.uk) or Emily Noble (E.Noble@leeds.ac.uk).

Planned Maintenance on Level 2



The Estates Team will be refreshing the paint in the second floor meeting rooms next week commencing 14 October. Please check the [LUU Room Booking System](#) to see which rooms are available.

Hero of the Week



This week's heroes are:

Carl Vurgest, Helen Szczur, Zane Alley, Yandan Bian, Lizzie Wride, Hannah Forrest, Katie Deavall, Aimee Missen, Emily Haigh, Natasha Pickles, Anna Winter, Claude Farr, Joshua Allan, Tom Clarkson, Kate Matthews and Phil Hazelgrave, Ryan Massey and Graham Wootton

Remember all nominations are submitted into our Hero of the Month draw of each month. There will be 3 vouchers up for grabs, each worth £10.

[You can submit your nominations here.](#)

To find out why you were nominated, [click here.](#)

Love to Learn – Clear Lessons



Is learning through videos more your thing? As part of Love to Learn, you have access to a library of video-based courses called “Clear Lessons”. These are bite sized videos that explore a range of topics such as leadership, skills development, coaching, confidence, mentoring, inclusion, and wellbeing. From interviews to animations, there is plenty to explore!

To find out more, [head over to Love to Learn](#) and click “Like to learn by video? Click here” at the top.

Reminders

- Are you a Student Staff member? Tell us how your welcome went for a chance to win one of 1 x £150, 3 x £100, or 6 x £50 vouchers, complete the survey by midnight on 13th October. [The survey](#) should take no longer than 10 minutes and we'll use your feedback to work towards continuously improving LUU.
- Your emails are not missing...they've been archived, check out [last week's weekly news](#) for more information.

Useful Links

[LUU Cultural Calendar](#) | [Equality and Inclusivity](#) | [Climate and Sustainability at LUU](#)