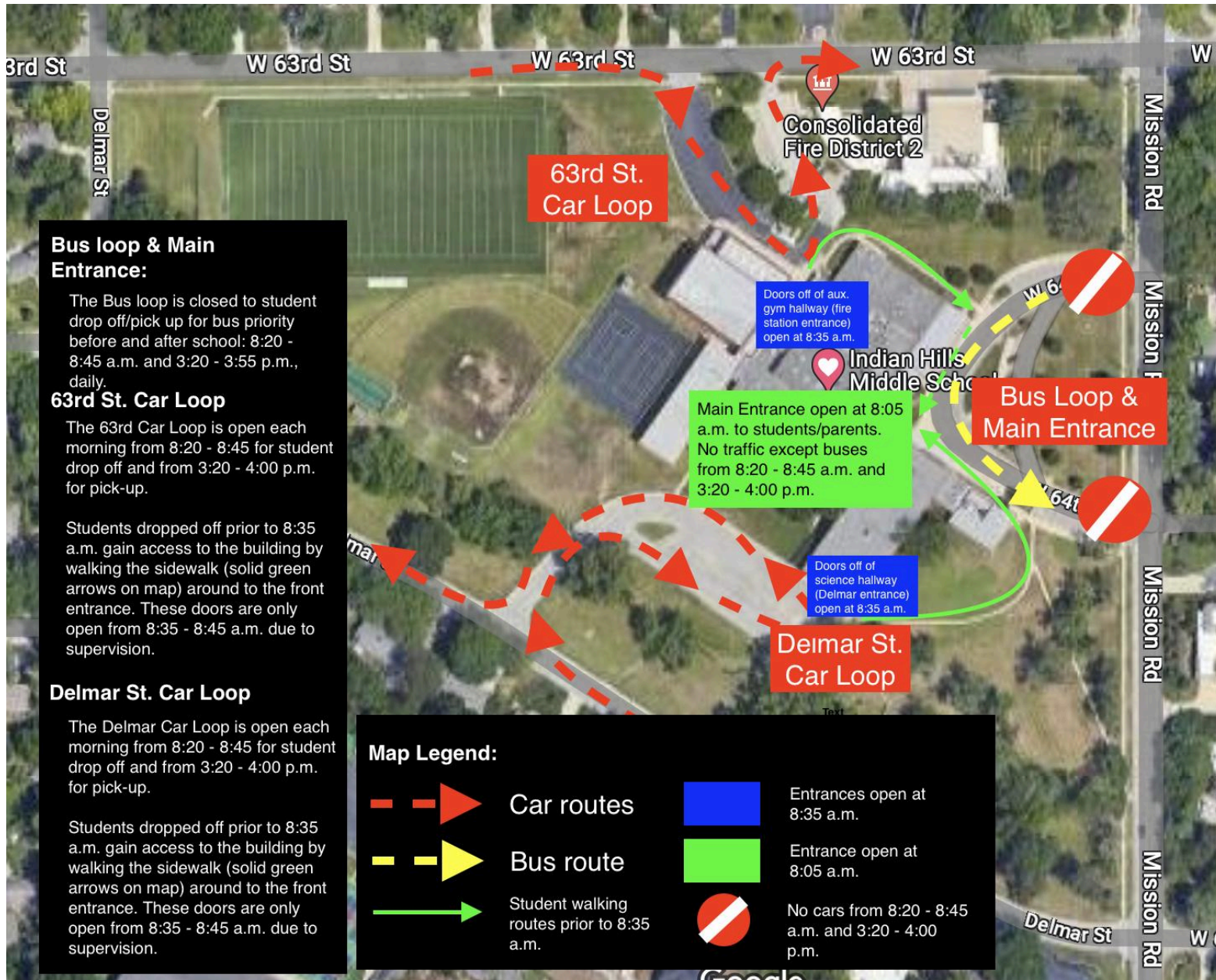


IHMS Traffic Flow Directions - 2023-2024





PICKING UP or DROPPING OFF a student at Indian Hills Middle School?

Stopping, Standing, or Parking is NOT permitted on Mission Road in front of IHMS.

- If cars are blocking an entrance to a parking lot, proceed to another parking lot- DO NOT stop or park on Mission Road or on 63rd Street.
- Designated pick-up and drop-off locations are the parking lots accessed from 63rd Street and from Delmar.
- No parking is allowed on the south side of Delmar between Mission Rd and 63rd Street.
- LEFT turns from the parking lots are PROHIBITED from 8:15-9:00 a.m. & 3:20-4:15 p.m. on school days.
- Pull as far into the parking lots as possible to allow other drivers behind you to enter the parking lot.
- Use parking stalls to allow other drivers access to the lot.
- Cars are not allowed in the front circle drive between 8:20-8:45 a.m. & 3:20-4:00 p.m. to provide space for buses.
- Be prepared to use alternate pick-up/drop-off locations in the event the parking lots are too full to access from a main street, such as a nearby park or local side streets.
- Pedestrians should cross at 63rd and Mission Road, using the crosswalk. Do not cross at 64th Street- there is no crosswalk here and no sidewalk on the east side.
- No parking is permitted on the south side of 64th Street east of Mission Road.

Traffic regulations **WILL** be enforced by the Police Department. We need your voluntary compliance to ensure the safety of the students and to prevent accidents!!!