

ChangedTale



“When one story ends, another one begins.”

Credits:

Toby Fox
Dragonsnow
Upstairs_Insect5835
sansiscool58170
Ashamed_Photo2329
meekso
Glennbluestar991

Introduction:

The Barrier is destroyed.

Monsterkind is free, but...

As they head to the nearby city, they see zero humans, just a ruined and rusted landscape.

A flower wanted to know what had happened, so he explored the wastelands of the surface, and then it saw the Thunder Science Laboratory. Inside, it was like a whole other underground world with an entirely new species of monsters.

As the flower questioned the existence of the creatures, he saw a human trapped in a stasis pod.

Wanting to redeem himself from his past sins, he vowed to himself to help the human and to find some answers about what happened.

IMPORTANT INFO:

Monsters can't get the pale virus and can't be transfurred.

Immunity to the pale virus is possible in this AU, but is **EXTREMELY** rare, like 1 in a billion chance.

Undertale Yellow and the revival theory are canon in this AU.

The Latexes are smarter and more sapient and can use magic thanks to 🖐️ 🕊️ 💧 🌸 🌟
fucking around, and they're also weaker and more killable.

They still have the urge to transfur you, but just do a lil ACTing and show some MERCY, and that's the urge all gone.

The more intense transfurs are now toned down.

Some darkners from Deltarune exist as either monsters, latexes, or robots.

All savepoint machines are replaced with the regular UT star savepoints.

Colin has the red SOUL and is also the narrator, along with Chara.
(Yes, the Narra Chara theory is canon in this AU)

The red SOUL is called the PURE DETERMINATION SOUL in this AU.

Info on the SOULS the latex beasts have:

Latex SOULS

The SOULS the latex beasts have are very different than monster and human SOULS.

The shape of the latex SOUL is a spade not a heart.

While latex SOULS are not as strong as a human SOUL but nowhere as weak as a monster SOUL.

About 3 latex SOULS equal the strength of a human SOUL.

Latex SOULS can have traits like humans do like: Patience, Bravery, ECT.



Transfurring Part 1

When transfurring humans with the intent of using them as a host the latex absorbs both the humans body and SOUL.

After this they drain the SOUL of its DT to the point of either breaking the SOUL or merging the mind and consciousness of both the human and latex merge into one.

While latexes don't need to absorb a humans SOUL but they do so they can archive much more powerful magic.



Transfurring Part 2

When transfurring humans without the intent of using them as a host or if its Gas or Crystal transfur the human loses alot of their DT and the SOUL becomes a spade shape.

While in the process and depending on the latex the memories the human once had fade as well.

This can range from mild amnesia, to complete egodeath.

The SOUL still keeps the trait when they were once human.



When a latex gets killed, they melt into lifeless goo and their SOUL breaks.

Gameplay:

You play as Colin with his (Maybe depending on which route you take) friends, Flowey, Sage, and Puro.

It features the same Changed gameplay, but also incorporates the Undertale battle system, along with the party and TP mechanics found in Deltarune.



* White Knight rapidly approaches you.

COLIN LV 1 HP  40 / 40 TP  10%

FLOWER LV 1 HP  60 / 60

♥ FIGHT

» ACT

👑 ITEM

✕ MERCY

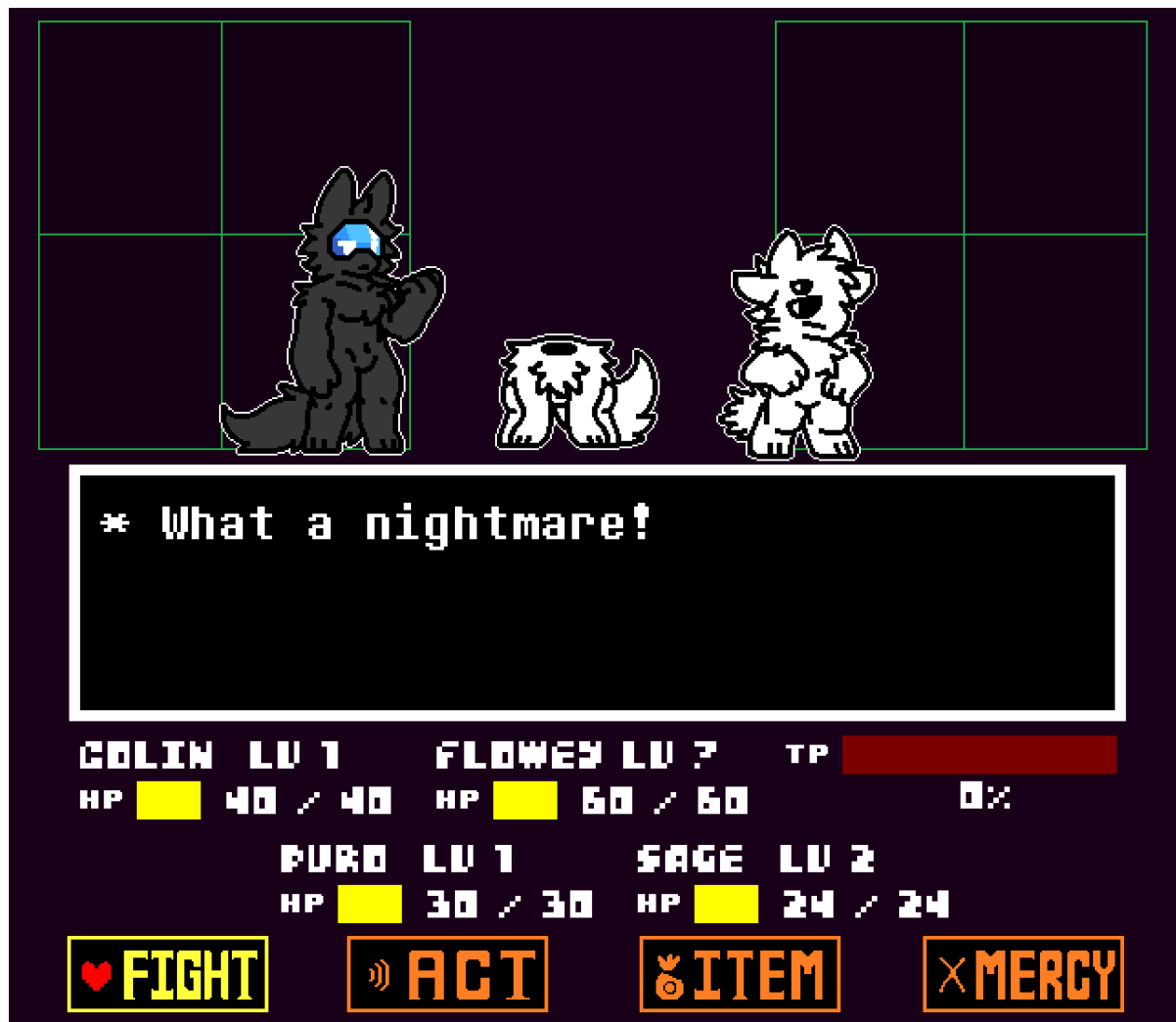
GAME OVER

Colin... if your still in here please dont give in...
stay determinated.

CONTINUE

GIVE UP





Weapons and Armor

(credit to u/Upstairs_Insect5835)

The starter labs/Wearhouse:

Colin:

Fists - ATK 1: Good ol' fashioned hands! Though kinda useless in this situation.

Kitty Bandana - DEF 2: A bandana patterned with cute kitty shapes! What a nice gift that small cat gave.

The dark latex nest:

Colin & Puro:

Glass shard - ATK 3: A piece of glass that one of the beasts somehow threw up, it still has some black goo... gross.

Poorly made disguise - DEF 4: A disguise that seems to have the purpose of tricking those dark wolves, a rough patchwork filled with love!

Sage:

Sawed off Shotgun - ATK 40: The Ol reliable, just don't expect her to use it through.

Patched up Worn Hat - DEF 5: An old cowboy hat that has seen better days. ... Looks familiar.

Library:

Colin & Puro:

Old book - ATK 6: An old book whose words have faded over time; maybe colouring it will help!

Name tag badge - DEF 5: Standard name tag with no name, surprisingly still clean!

The Garden:

Colin & Puro:

Rusty gardening scissors - ATK 9: Good ol' gardening tool, seems to have been unused for some time.

Colin, Puro & Flowey:

Flower crown - DEF 8: A pretty flower crown! Seems to have been made with daisies.

Gas Rooms:

Colin & Puro:

Empty canister - ATK 11: An empty canister, seems to have a lingering sweet smell though that's strangely strawberry.

Broken gas mask - DEF 10: A gas mask that's done its purpose a long time ago, could be used for Halloween

Light latex jungle:

Scratched pipe - ATK 13: A pipe that seems to have claw marks on it alongside some fur, could be used to play fetch.

Torn lab coat - DEF 12: A lab coat that has its downer half torn off a bit, what a fashion statement!

Sage:

Gifted Hat - DEF 18: A nicely made hat with a picture of a family with text on it.

* "I'm sorry for everything."

Pale Empire:

Sage:

TSC Electro Shotgun - ATK 160: The standard weapon to use against more powerful Latexes, seems to be covered in light latex.

Geno Route Only:

TSC Electro Baton - ATK 90: The main weapon used against latexes.

Roit Shield - DEF 120: Should defend you from most attacks from weaker latexes.

Ruined city:

Cherished bat - ATK 16: A bat that your parents gave to you back when things were simple, wonder if you could play baseball again...

Egg shaped locket - DEF 15: An egg shaped locket you got as a joke, has a picture with you and someone smaller than you wearing a cooking apron, both smiling, the text in the picture says:

* Yolk's first cooking lesson.

*

Hard Mode

(credit to u/sansiscool58170)

Unlocks after doing the True Pacifist ending.

What it does: it makes it so each enemy has 2x more hp, adds 5 dmg per LV you are, and 5 dmg will equal 1 dmg to you.

Adds new enemies.

Areas (In Order)

The Starter Labs/Wearhouse

A storage area in the T.S.C. tower to store spare equipment and test subjects.

Dark Latex Office

A former research area now turned into a habitat for the dark latex.

Dark Latex Nest

Used to be the main sector for the tower's servers, now turned into the main centre of dark latex territory.

Library

A library for the scientists to study and also to preserve history, and it is the home to dark latex we all know and love.

Ventilation/Maintenance Tunnels

A claustrophobic area filled with latexes and along with latexes who prefer the darkness.

The Garden

A large greenhouse meant to grow food for the personnel in the tower, along with containing Plant-like Latexes.

Gas Rooms

One of the Maintenance Tunnels that stores a lot of strange gas canisters, which it seems has sprung a leak, by a certain Doctor.

Aquatic Life Sector

An area that is now flooded, which used to contain experiments on aquatic latexes.

Balcony/Light Latex Jungle

The area used to get to the other side of the tower quicker, but be cautious, some rooms in this area are covered with light latex.

Level 3 & 4 Hazard Containment Zone

One of the more secure areas in the tower, containing more dangerous latexes and where you finally meet Dr. K face to face.

The Main Lab

Used to be the main hub for containment, research, and experiments in the tower, now run by eight clans trying to defend themselves from each other and the Pale Empire.

The Pale Empire

Home and Kingdom to the most ruthless and power-hungry latex in the tower.

L.W.D. Sector/Sealed off zone (Secret)

The most secure and secretive area in the entire T.S.C. tower that houses their most dangerous experiments.

More aggressive and altered versions of the latexes you've met in the previous sectors are here, along with a voice echoing across the halls.

Main Exit

The final stretch before freedom, and where you think back about your journey, along with a choice you have to make.

Ruined City (True Pacifist Only)

Ebott City: Home of the Mountain Beast!

Characters:

Party Members

Colin Jackson

The Protagonist

HP: 40 Leader



A confused and skinny human who wants to get out of the facility with the help of Flowey, Puro and Sage.

He was a great baseball player once.

Older brother of Yolk, and ever since he went missing, Colin isolated himself before the T.S.C. kidnapped him.

Doesn't truly trust Flowey, no matter the route and ending.

Flowey

HP: 60 Bruiser



Wants to redeem himself for what he did.

Now Colin's best friend, or at least he thinks he is.

Likes to keep his distance from the UT cast.

Sage Keydin (credit to u/Upstairs_Insect5835)

HP: 25 Spell Caster



Clover's twin sister.

Originally infected with the Pale virus, she was placed in a stasis pod; however, she surprisingly became immune to the virus.

Has two sides: Absolute gremlin or Tired of everyone's shit

Has the same soul trait as her brother, is still sad at her twin's disappearance and blames Dr K for it as well as herself.

Wears the cowboy hat Clover made for her as a tragic keepsake.

Takes care of and looks after every creature in the T.S.C. that are not on Tails side.

Doesn't trust humans due to the stuff she saw during the pale virus pandemic.

HATES THE T.S.C.

Knows how to use magic.

Cannot be transfurred. (due to the pale virus immunity)

Will not hesitate to ditch you if you so much as kill one latex.

Puro

HP: 30 Healer



A curious and compassionate dark latex wants to be friends with a human more than anything in the world.

The living definition of a bookworm.

One of the few latexes who learned to speak, write, and talk without Sage's help.

Trying his very best to fight back his urges to transfur Colin because he needs a host or else...

Main Characters/Bosses:

King Noir (Wolf King)



One of the two leaders of the dark latex species.

He is the smartest of the dark latexes, but at times can be arrogant and has a ego.

Will do anything to make his subjects happy.

Formerly the head security officer when he was human, but wants to move on and forget his human life and keeps it secret from the rest of the latexes.

Lord Chiron (Dragon King)



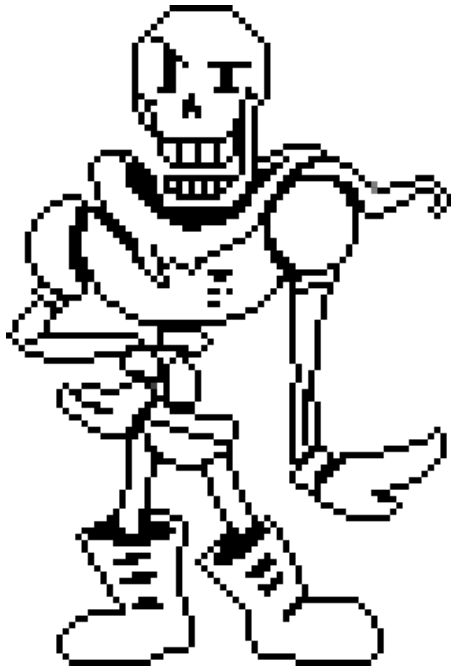
One of the two leaders of the dark latex species.
The strongest and oldest dark latex.
(Basically, he's the brawn while Noir is the brains)
Melody's father.
Willing to do anything to protect his kind.
Has the yellow soul mode in his fight.

Amy and Alaster (The Snow Leopards)



Two mischievous latexes who like to pull pranks on the other latexes by using boxes.
Now, thanks to a certain skeleton, the Leopards are puzzle-making fanatics.

THE GREAT PAPYRUS



Still the same old innocent, puzzle-making, pasta-making, and friend-making skeleton.

Wants to show how cool monsters can really be to the latexes.

Is somewhat manipulated by Dr. K to add puzzles across the tower to stop Colin.

Sans



sans undertale.

Striver (Stiger)



An excellent knitter, although a bit of a prankster.

Has a very long rivalry with the sneps.

Wants to open a boutique someday and make clothes for all of the other latexes.

Hates being around lights and prefers the dark.

TSC Assistant Bot Designation-621/The Prototype



An unreleased service robot and a big fan of Mettaton, thanks to the EMP that Asriel caused when he broke the barrier.

Likes to replicate his shows, quotes, etc, but the major thing is that Proto wants to dance with the big M someday.

Takes good care of the Greenhouse as part of the programming Dr. K gave him.

Susie

A royal guard trainee a bit pissed that her year of training has been wasted.
Still the same old rude self from Deltarune.
She followed Sans and Papyrus into the T.S.C. tower without the two of them knowing.
Was a friend to **a certain human** in her past.

Berdly

Greatly different from his Deltarune counterpart by being actually very smart and can hack whatever systems that still work in the tower.
Still has his gamer personality tho.
Soon to be the new Royal Scientist.
Martlet's younger brother.

The Behemoth



A bunch of fused light latexes who think they are the biggest and most powerful.
When in reality they are a giant with a huge heart.
Just tired of being bossed around by Dr. K.
Not the brightest of latexes.

Hilda (The Hyena)



A very overprotective mother who will do anything to keep her children safe.
One of the fastest latexes despite her size.
Loves nature.
Hope's biological mother.
Ever since Hope went missing, Hilda became more protective of the rest of her children, but they all died thanks to the virus and willingly transfurred herself during the riots.

Dylan (Tiger Shark)



A very playful and adventurous latex who dreamed of living in the ocean.
A super strong hunter.
Causes a lot of trouble at times.
The alpha of the sharks.
Sees Calama as an older bro.

Calama (Squid Dog)



A more professional leader who keeps the sharks and squids from strangling each other.

The alpha of the squid dogs.

Views Dylan as a younger brother.

Although he can be annoyed by Dylan's requests to have fun with him and the others, he still loves him.

Protective of not just the squid dog pack but all of the aquatic life in the sector.

Orca Hydra



A misunderstood giant who wants to find their third head after an incident that caused a lot of latexes to fear them.

The Right head is stubborn and persistent, The Left head is shy and anxious, The middle and missing head is very cheerful and optimistic.

They have the green soul mode in their fight.

Queen Felia



The queen of a hive of bee latexes.

Loves both honey and her hive more than anything.

A kind and joyful person.

Very cautious about the safety of her hive.

Kidnaps Flowey due to a shortage of flowers around the facility.

Has a rivalry with Antoid.

Dr. K/Rowan Keydin



Former scientist for Thunder Science.

Had multiple degrees in biology and bioengineering.

Will try multiple times to contain and transfur Colin by any means necessary.

May seem like a cold, calculating person at first but inside, he is depressed and blames himself for not being with his family often.

Will try anything to keep Sage safe and make things right.

Clover's and Sage's biological father.

The Wendigo



A mysterious, dark latex banished from the pack due to her unknown powers.

Is mostly a loner and doesn't mind being banished.

Most of the dark latexes, including Puro, believe that she is a mere myth to keep the pups from leaving the pack.

Kenji's nephew.

Has the orange soul mode in her fight.

Queen Antoid (credit to meekso)



The queen of the Bugtaurs.

Much more of a risk-taker and a lot more no nonsense.

Wants the best for her colony.

She isn't very fond of other latexes ever since the Pale Emperor attacked her colony.

Has a big grudge with Felia.

Queen Stonitress



An order-obsessed Queen of the Gargoyles.

Loves a classic game of chess.

And by "classic game", I mean using her subjects as chess pieces. (Not like they mind)

Prince Jack

The son of the light latex lord.

Very childish and goofy.

Wants to be noticed by his poor excuse of a Father.

(this universe's version of Lancer)

Tail "The Pale Emperor"



The lord of all the light latexes and the strongest latex in the facility.

A cold-hearted megalomaniac with little compassion towards anyone, and he only considers his own desires.

(this universe's more evil version of the Spade King)

Frisk Dreemurr



A human who survived the apocalypse after the pale virus broke out, and the saviour and ambassador of monsterkind.

An annoyingly persistent lil goober.

Is immune to the virus.

Doesn't talk much.

Non-binary.

Chara Dreemurr



The first fallen human.

Genderfluid.

Still kinda hates humanity, but not as much.

Can be a little mischievous at times.

Sort of the narrator.

Now only a ghost that only Colin, Frisk, Sage, Dr. K, and the six SOULINGS can see.

Keeps a good eye on **YOU**.

The six fallen humans/SOULINGS

(credit to u/Upstairs_Insect5835)

Those who had fallen before Frisk now revived as SOULINGS thanks to Asriel.

([Info about SOULINGS](#))

Patch Gray

A child who was patient even after death, willingly gave her soul to Asgore as to give monsterkind the Patience of ever seeing the surface, died way before the pale virus was found.

Is Jessica Grey's less bigoted younger sister and has been trying to gently nudge her older sibling to stop her planned massacre in her spirit form.

Kenji

A child who bravely jumped to the underground to look for their best friend (Patch), fought Asgore in a fair fight as their final wish to show that anyone can be Brave, had anger issues.

The uncle of the wendigo.

Hope

A child who persisted on studying the legend of the underground and monsterkind, gave up her soul to the royal scientist to allow them to find an alternate way of breaking the underground as to not let more pain and tragedy to befall, showed

monsterkind to persist even when things became bleak, is Hilda's biological daughter, went into mt ebott three years before Yolk fell.

Yolk Jackson

A child who shared his kindness to those who needed it, was loved by the underground for his kind nature and the comfort he brought, gave up his soul to Asgore to give monsterkind one final act of kindness, was missed dearly both in the underground and on the surface when he disappeared, and is Colin's little brother.

Melody

A child who stayed humble to the end, broke down after being stuck in a time loop inside the underground due to their unstable DETERMINATION, secretly allowed AXIS to murder her in order to make a Xanatos gambit that allowed monsterkind to still have Integrity, didn't allow Chujin to absorb her soul out of guilt and was horrified at the consequences it had on the Ketsukane family.

Lord Chiron's biological daughter has been observing from the void.

Went to Mt ebott 3 years before Clover fell to the underground.

Clover Keydin



A child with a big sense of what's right and wrong who gave up their soul so monsterkind can be one more step closer to having their justified freedom.

Dr K's son and Sage's Twin brother.

Went to mt. ebott about a year before the pale virus started to become a major thing.

L.W.D. Sector/Sealed off zone:

(credit to u/Glennbluestar991)

Project Napalm Storm: Inferno Commander

A large Dark Latex dragon, not as strong as Chiron in terms of physical strength, but makes up for his powerful pyrokinesis.

Leader of a faction of Fiery Dark Latexes.

Was a scientist working on the Latex Weaponstion Program or L.W.P. for short, and was the head of research on most of its projects before an argument which led to an incident.

Project Overgrowth: Blue Moon Guardian

A large plant, Latex, with powerful manipulation of plants, can grow entire forests in a mere day.

Extremely protective of plant life in the zone.

She was Thunder Sciences' top botanist, responsible for the discovery of plant latexes.

DJ Hydro

An attempt to clone the Orca Hydra.

Has the ability to create loud sound waves.

But mostly uses it to throw extremely loud raves.

They're once the warden of the LWD's test subjects.

HOW BORING! Please shut up. Guys, I don't think we should be writing in this.

Project-RGB (Secret boss)

A former test subject who signed up to be one after his sister got the pale.

Is the reason why the Sealed off zone is... sealed off.

Has been through a lot of painful tests since his transfuration.

Mentally unstable since then, and has been looking for a way out.

Has manipulated multiple latexes to go to the sealed-off zone for a chance to escape.

RBG-02

Project-RGB's younger sister.

Has been alone for god knows how long ever since she got transfurred.

The Antagonists

Thunder Science



“Transferring humanity to the future.”

The TSC is a scientific research corporation founded in the 1960s.

The company started as a tech company under the name "Thunder Technologies", but soon became the infamous science organisation.

Much like every other company, greed is the only thing they know.

Responsible for the existence of the latex beasts and the kidnapping of a godly amount of people.

And then it all came back to bite them in the ass in the riots.



Johnson Grey

Former CEO of Thunder Science.

Head researcher of the Genetic Project.

Unlike his mother, he didn't hate monsterkind, nor was he interested in her blind vengeance.

A wildcard at best.

He was in a personal bunker while the virus broke out, along with his mother.

Killed by his mother.

Jessica Grey (Main antagonist)

yes i used a character from glitchtale sue me

The CEO of Thunder Science before John.

Johnson's mother.

Obsessed with her goal to kill the monster race because she believes that they killed Patch in cold blood.

Has studied monsterkind in secret using ancient books and historical artefacts.
During her time in the bunker, she was disgusted by the Genetic TransFur Project and repeatedly tried to convince the other higher-ups to halt it, but to no avail.
Slowly went insane due to cabin fever.
Semi-responsible for the riots.
Killed an entire bunker of elites to gain enough LV to get a head start on her monster and latex genocide.
Patches' older sister.

(Bonus) Royal Ranks

(credit to u/Upstairs_Insect5835)

Jevil

The Royal jester and the one who introduced Hope to the others was the one who suggested adopting Hope and have her become the Royal archivist unofficially, is like his Deltarune self but more lucid and more caring, stargazing at waterfall when he has free time, is currently married to Seam.

Seam

The Royal magician and a part-time shopkeeper, is the one who taught Hope all sorts of spells back when she was fully human and unlocking one of her SOUL abilities, less nihilistic and more jolly than his Deltarune counterpart, runs a shop where he sells baked goods and magical artefacts in waterfall when not doing his Royal duties, is currently married to Jevil.

Tasque (Tasque Manager)

The Royal maid who keeps the castle clean, offers her cleaning services to various monsters with other maids at her disposal, is mostly seen cleaning around the lab in Hotland due to Alphys forgetting to do it, teaches Hope on how to apply disguise so that other monsters wouldn't know she was human, helps Seam with his shop sometimes.

Swatch

The Royal butler has his butlers called "Swatchings" that help clean around the underground, like Tasque. He also offers cleaning services, but also offers help with events and parties by either having his butlers as bodyguards or as cooks. Is the one who made a Royal badge for Hope to show that she's the Royal archivist.

Malius

The Royal blacksmith, who helped make weapons back when the war with Humans and Monsters was still ongoing, offers help to fix items or combine new ones for others, taught Hope a lot on how you can infuse magic inside an object, and is drinking buddies with Gerson.



Endings:

Blue ones are the neutral route endings

Green ones are the pacifist route endings

Red ones are the geno endings

Distrust: Dr. K lures Colin to the white latex forest after telling Puro that he never trusted them in the first place.

The light latexes transfur him, but his memories are slowly being restored thanks to Puro.

Betrayed A: Puro uses Colin as a new host, combining their bodies.

Both Colin's and Puro's minds shift together and become one.

Betrayed B: Puro Transfurs Colin, but allows him to live in a separate body to keep him company.

Too Late: Dr. K kills Puro and transfurs Colin and contains Flowey.
Later on, Sans and Yolk kill the doctor for revenge.

Father's Lost Chance (credit to u/Upstairs_Insect5835):

Requirements: Sans and Papyrus must be befriended, and you must have a higher bond with Pap.

Sans tries to fight Dr. K while defending Puro, but in the end, it was in vain, and he is killed along with Puro.

Just as you enter the room, Papyrus also enters to check on Sans, only to see him turn into dust.

Upon seeing this, Papyrus gets enraged, and then a fight starts.

Stay: Colin decides to stay in the lab while Puro, heartbroken, leaves the lab along with the skeletons.

Leave: Colin decides to leave and succumbs to the virus. The latexes that he befriended buried Colin's body.

True Pacifist:

Requirements: Befriend every latex, do every dating/hangout thingmagic, find a photo of Dr. K's family, Press X when doing the decide thing, and find out the truth about the riots and the Latexes.

After the cutscene, when Dr. K finishes your surgery and sees the sunset with Puro, Sans, and Papyrus.

You explore the ruined city and find Jessica fighting Undyne.

A boss fight starts with Colin, Frisk, Sans, Papyrus, Puro, Sage, Dr. K, Undyne, and Asgore to bring the woman who caused humanity to fall to justice.

After the battle, Jessica's DT is extracted thanks to 🖐️ ✌️ 💧 🌸 🌟 and is now imprisoned in the facility's containment areas.

The Latexes move to the underground due to Asgore deeming the surface unsafe.

After that, as the end credits roll with scenes and pictures of what happened to the latexes after the game.

THE END

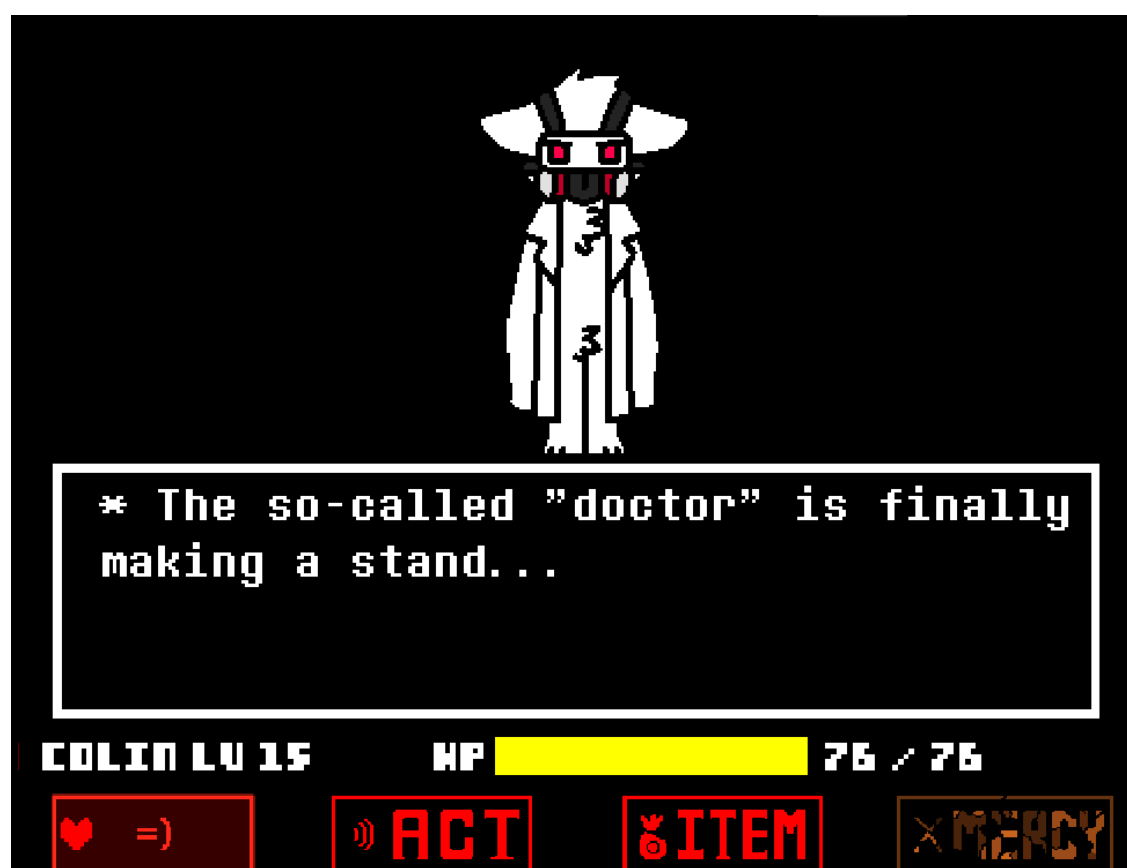
Since when? =)

Betrayer (Flawed Geno): Flowey restrains you while Puro transfurs you to prevent your killing spree from going any further.

Berserker/Genocide:

Route Bosses (in Order):

Lord Chiron, Papyrus, Behemoth, Calama, Sans, Dr. K, and Puro.



Final Boss:



Puro is seen at the exit, mad at you for obvious reasons, and then the final battle starts.

Phase 1: Puro uses whatever he can to either transfur or kill you.

Phase 2: Flowey joins in to help Puro.

Phase 3: Flowey dies while giving Puro a serum that is made of DT and boss latex DNA, turning Puro into a huge dragon-like beast.

- During the fight, the T.S.C. tower gets critically damaged to the point that it's a miracle that it didn't collapse.

END: Puro's body could not cope with the power, so his mask broke at the end of the fight.

- Jessica is seen and impressed by your skills and offers you an alliance to help her exterminate monster kind.

- You are given a choice to help her or not, but either way, she kills you.

- After this, you were given the option to do a TRUE RESET and undo the massacre, but it would leave consequences such as Puro not helping you as much and Dr. K being a lot more persistent in transfurring you.

Alt Geno Routes:

(There are multiple berserk/geno paths, but they depend on specific requirements to get)

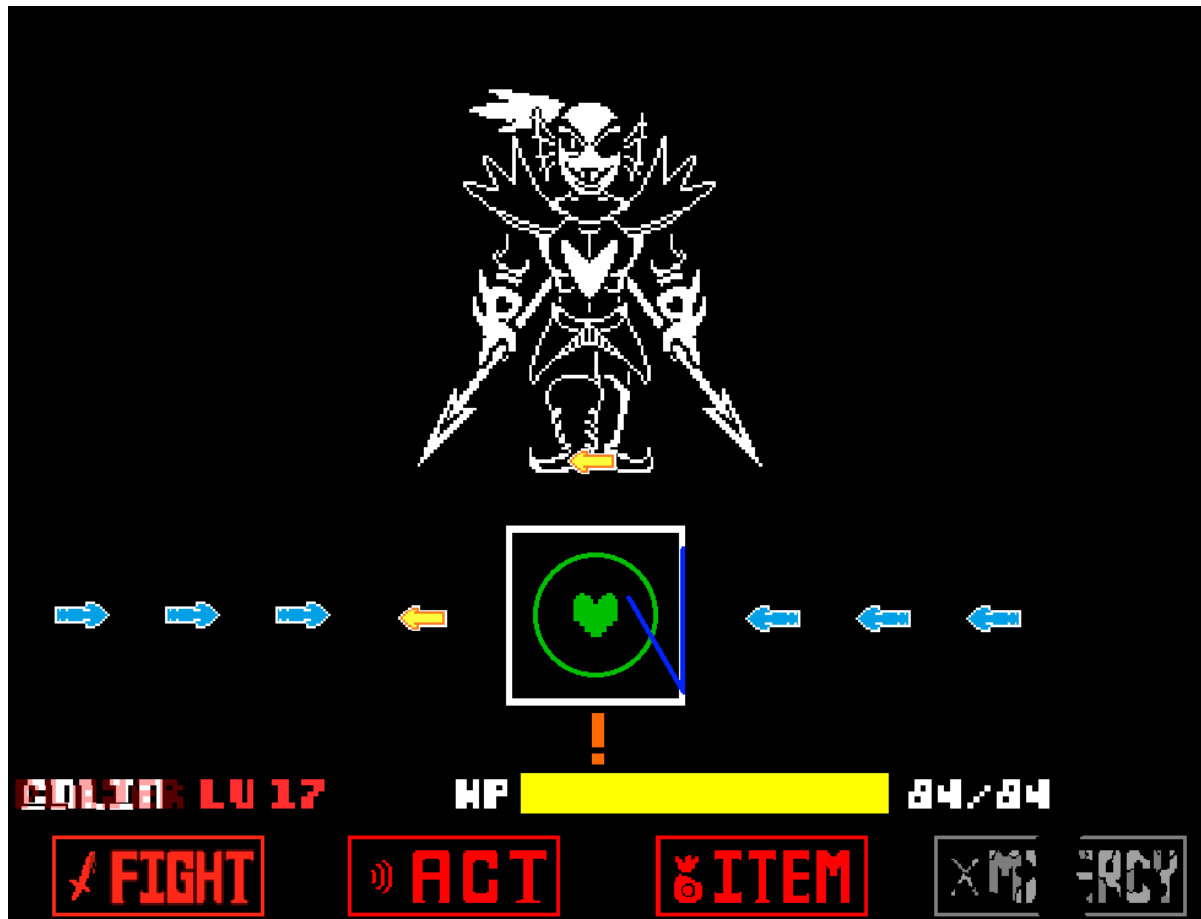
Disgrace



Requirements: Avoid the Papyrus fight.

- Changes in route: Papyrus is the second-last boss.
- Still has a smidge of hope that you can change.
- The first three phases continue as regular disbelief, but he is more pissed off.
- The fourth phase is now basically the second act of Revenge TUE.

A Hero's Final Strike

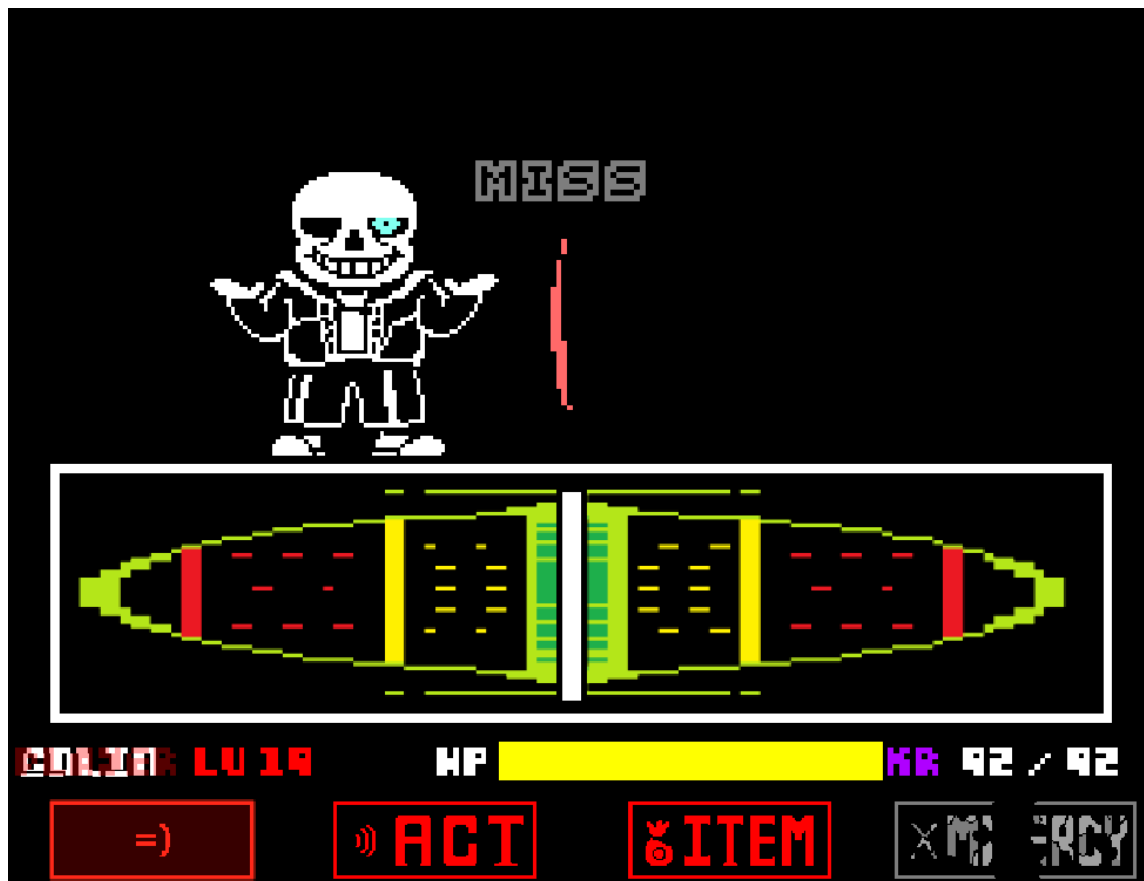


Requirements: Steal Papyrus's phone after killing him and call Undyne

Changes in route: Undyne is the final boss

- Most of the latexes of the later parts of the game are gone due to Undyne helping the evac.
- Thus causing you to be at LV 17 in her fight.
- Has a second phase where she injects more DT into her system, turning her into a Evangelion-like Keiju.

The Sloths' Last Stand



Requirements: Flee from Sans after he is too tired to fight you any further

Changes in route: Sans is now the final boss of the route

- His fight takes place in a replica of the Last Corridor in the void.
- Isn't joking around anymore.
- Has three phases.
- ULB but with some differences.

Twin's Animosity (credit to u/Upstairs_Insect5835)

Requirements: Try to kill Amy first when fighting her and Alaster, alongside killing Papyrus and Sans early on.

Changes in route: Alaster himself takes the hit of your attack, resulting in Amy running away.

- Makes her the final boss battle near the hallway where Sans normally judges you on Pacifist.
- Has become more powerful than before, adding puzzle mechanics to her boss battle alongside shooting out various white blasts.

- Has two phases.
- Second phase has her pulling out a bomb that ticks for a time limit, forcing you to use the act button to find a way to defuse it before she takes you out with her.

Enraged Justice (credit to u/Upstairs_Insect5835)

Requirements: Kill Dr. K early and search his pockets to find a photo of him before he was transfurred and Clover smiling, then go inside his lab and find a cowboy hat that belonged to Clover (K made it for Clover as a birthday gift).

Changes in route: Clover themselves resets everything to the beginning due to 🖐️ ✌️ ⚔️ 🌸 ➡️ ☀️ adding a bit more DT to his SOUL with pure rage, ejecting you out of Colin's body and being the final boss.

- Has a hateful expression on their face and begins the battle without any dialogue-
- Has two phases.
- Teams up with his Father.

NO MORE

Requirements: Do every single possible Berserk/geno route

Changes in route: You can now kill Jessica Gery on the choice part, and then another fight starts, but it was cut short when Frisk attacks Jessica on her third attack.

- She begs the child to spare her, but...
- It was useless as Frisk repeatedly stabbed her multiple times using the true knife, killing her.
- And then after that brutal scene, Frisk speaks to not you but Colin, telling him to fight back.
- Colin finally gets control of his body, rips his soul off and then-

Why...

Why won't you just move on from this world?

...

What surprised?

You've probably figured it out by now.

The erase thing?

A mere trick to kick you out.

Alongside taking your SOUL in a one-sided “deal” along with a fake copy of this world.

Now I see you found another human to fulfil your desires.

At first, I thought it was someone else using him as a vessel.

But seeing how much you enjoyed seeing the possibilities, you can get by doing the same route.

That’s when I knew it was you and realised that you probably didn't have a SOUL in the first place.

So it looks like we both got conned in our “deal” in the end.

But just like I said before

SINCE WHEN YOUR THE ONE IN CONTROL

>=(

(credit to u/Upstairs_Insect5835)

AN END TO A CYCLE.

Requirements: Do every single genocide route, including the NO MORE route and modify the files, You also have to kill Dr K early and find all things that are related to his Family, Clover and Sage, At the start of your genocide Sage is not shown in this route as normal.

Result: The game crashes after you leave the tower.

When you reopen it you're now no longer playing as Colin but the unused human sprite from Undertale and you're now in a void filled with unused sprites.

Sage themselves confront you, having partial ability to affect the world and giving you the reason you suck speech.

- has three phases.

- The third phase is where she injects an ungodly amount of determination into her body and transforms into an eldritch monster.
- If you win: Sage taunts you on the fact that you're an idiot, telling you that Chara themselves will make sure you never come back and the *guardian of the multiverse* is now aware of your existence before eventually disintegrating into nothingness.
Chara and INK!Sans themselves appear in Front of you and kick you out of the game once and for all.
- If Sage wins: Sage proceeds to send you to the void where the fallen humans and 🖐️ 🕊️ ♡ 🌀 📡 extract your DETERMINATION from the vessel and outright lock you from the game, not before Clover themselves tells you go to hell.

Even if you win or lose you still face the consequences at the end.