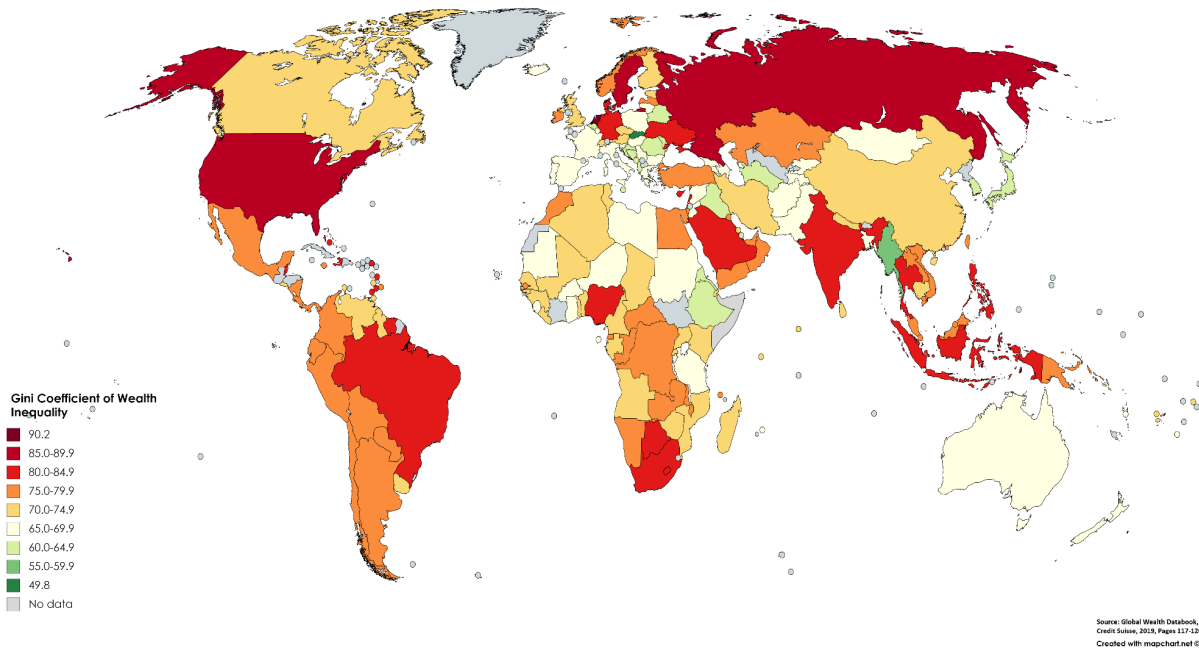


#1



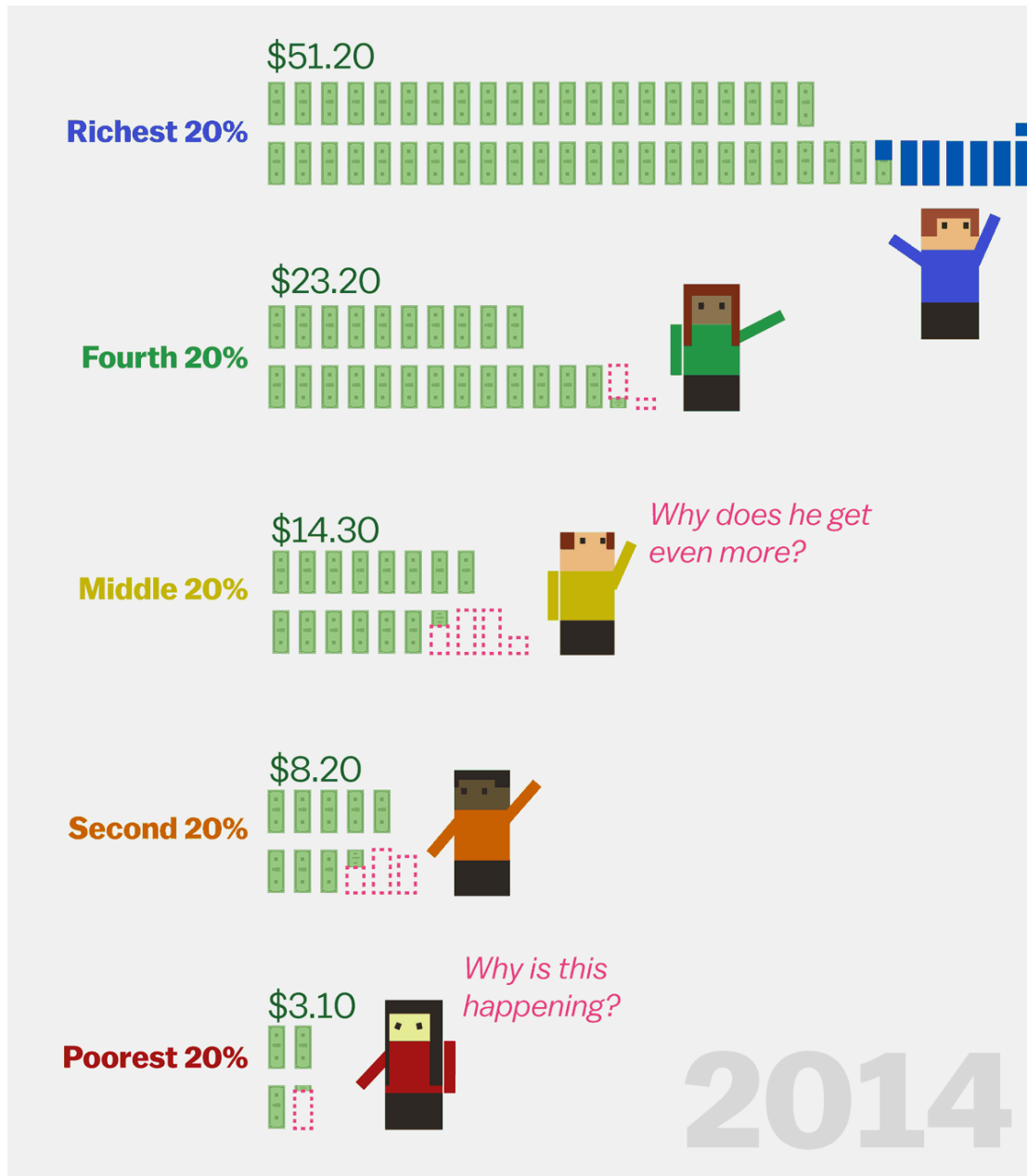
This is a map of the world that shows the distribution of wealth. The darkest red countries have greater inequality between people that live in that country. The green countries have less inequality, which means that the people in that country have a more equal distribution of wealth.

#2



This is a photo that was taken in Brazil by a photographer named Tuca Vieira. He says it shows an image of social inequality. The left side of the photograph is an area where poor people live. The right side of the photograph is where the rich people live. Tuca says this difference between the living conditions of the rich and poor is unjust.

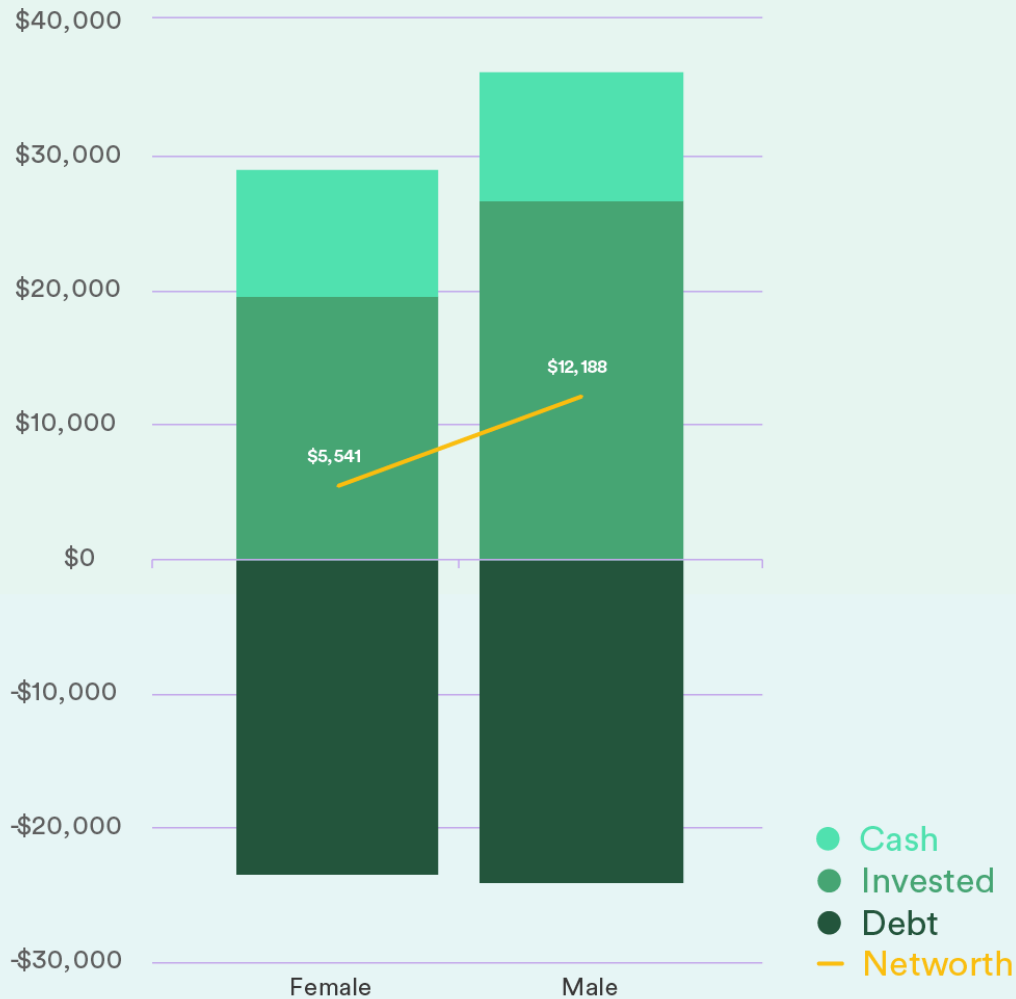
#3



This picture explains income inequality in the year 2014. The person on the top is the richest, and the person on the bottom is the poorest. The green dollar bills show how much money each person has. The blue dollar bills show how much money the richest person gains, and the red outlines show how much money everyone else loses. As time goes on, rich people become even richer, and poor people become even poorer.

Net Worth by Gender

VERIFIED ASSETS AND INVESTMENTS OF LOAN APPLICANTS



This picture shows the difference in net worth between women and men. While both genders have similar amounts of cash and debt, men have more than twice as much net worth as women.

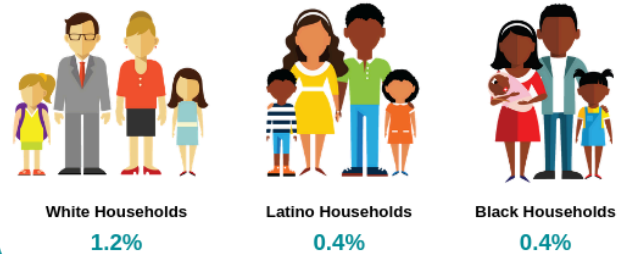
#5

WHITE FAMILIES ARE THREE TIMES MORE LIKELY THAN LATINO AND BLACK FAMILIES TO BE AMONG THE NATION'S TOP EARNERS

BECAUSE AMERICA'S WEALTHIEST FAMILIES ARE OVERWHELMINGLY WHITE, IT IS INEVITABLE THAT A TAX CUT GEARED TO THE VERY TOP WOULD SHOWER OUTSIZED BENEFITS ON WHITE HOUSEHOLDS RELATIVE TO THE OVERALL POPULATION AND HOUSEHOLDS OF COLOR.

www.prosperitynow.org/resources/race-wealth-and-taxes

Top 1% Percent of Income Earners



As a result, households of color are largely excluded from accessing the Tax Cuts and Jobs Act's benefits, leaving them with little support from one of our nation's largest systems for improving the economic outcomes of American households.



This picture explains that White families are three times as likely to have a high income when compared to Latino and Black families. Tax cuts are given to families that make more money, which means Latino and Black families don't get them as often as white families do.

#6



This is a cartoon that shows inequality in public school funding. Schools in places where white students live often get more money, which means they have better resources.

When schools in places where black students live get less money, this means they don't get good resources or opportunities.

#1

This is a map of the world that shows the _____. The darkest red countries have greater _____ between people that live in that country. The green countries have less inequality, which means that the people in that country have a more _____ distribution of wealth.

#2

This is a photo that was taken in _____ by a photographer named Tuca Vieira. He says it shows an image of _____ inequality. The left side of the photograph is an area where poor people live. The right side of the photograph is where the rich people live. Tuca says this difference between the _____ of the rich and poor is unjust.

#3

This picture explains _____ inequality in the year 2014. The person on the top is the _____, and the person on the bottom is the _____. The green dollar bills show how much money each person has. The blue dollar bills show how much money the richest person gains, and the red outlines show how much money everyone else loses. As time goes on, rich people become even richer, and poor people become even poorer.

#4

This picture shows the difference in _____ between women and men. While both genders have similar amounts of cash and _____, men have more than twice as much net worth as women.

#5

This picture explains that White families are _____ times as likely to have a high income when compared to Latino and Black families. _____ are given to families that make more money, which means Latino and Black families don't get them as often as white families do.

#6

This is a cartoon that shows inequality in public school _____. Schools in places where white students live often get more money, which means they have better _____. When schools in places where black students live get less money, this means they don't get good resources or _____.