

Hello Auditionees!

Welcome to the audition process for the 2025-2026 Braswell HS Orchestra program! This audition process is intended to ensure that everyone has an equitable opportunity to audition for all of the orchestra ensembles. Everyone will have a home - this is really a way for me to best place you where you can find success.

Our HS program currently has four string orchestra ensembles:

- **CONCERTINO:** Our **varsity** or “**top**” orchestra - this ensemble is **SMALL** and composed of the **top musicians in the program**. Students in Concertino:
  - Easily and comfortable shift IN TUNE between I (first) and III (third position)
  - Have well-developed advanced left hand skills like vibrato, using 4th finger in lieu of open strings
  - Sensitivity to pitch and ability to make micro-adjustments for intonation while playing with others
  - Understand and demonstrate standard keys: D major, G major, C major, F major, and relative minor keys and modes
  - Have mandatory weekly sectionals before school (7:30am - 8:30am: see attached schedule)
  - Perform at UIL Concert Performance & Sight Reading
- **CONCHORD:** Our **non-varsity** or **intermediate** orchestra - this ensemble is composed of **intermediate and advanced musicians in the program**. Students in Conchord:
  - Are working to consistently shift IN TUNE between I (first) and III (third position)
  - Have developing vibrato and consistent 4th finger use in lieu of open strings
  - Developing section and ensemble intonation awareness
  - Understand and demonstrate basic major keys: D major, G major, C major, and F major
  - Have mandatory weekly sectionals before school (7:30am - 8:30am: see attached schedule)
  - Perform at UIL Concert Performance & Sight Reading
- **SONORE:** Our **technique focused** orchestra - this ensemble is composed of **developing musicians in the program**. Students in Sonore:
  - Are developing left hand skills like shifting, vibrato and consistent 4th finger use
  - Developing listening skills for individual, section, and ensemble intonation
  - Working towards mastery of the following major keys: D major, G major, and C major
- **LAB ORCHESTRA:** Our **introductory** and **skills strengthening** orchestra - this ensemble is composed of **developing and musicians playing secondary instruments in the program**. Students in Lab Orchestra:
  - Are developing left hand skills like shifting, vibrato and consistent 4th finger use
  - Developing listening skills for individual, section, and ensemble intonation
  - Working towards mastery of the following major keys: D major, G major, and C major

Please be sure to complete this Google Form BEFORE you audition (in fact, you can fill it out RIGHT NOW).

<https://tinyurl.com/BHSOAudition2526>



Dr. Laborte will reach out before the end of March with audition days and times for signup.

# SIGHT-READING

All students will be asked to sight read a short excerpt during the audition.

Sight reading can only **help**, not *hurt* your overall audition score.

## ETUDE #1: Intonation & Shifting Etude

For **Sonore** or **Lab Orchestra** consideration:

- Please play entirely in **FIRST POSITION**.

For **Concertino (Varsity)** or **Conchord (Non-Varsity)** consideration:

- Do not play **ANY** open strings.
- When you **repeat** back to the beginning, please play the **THIRD POSITION SHIFTS** as marked.

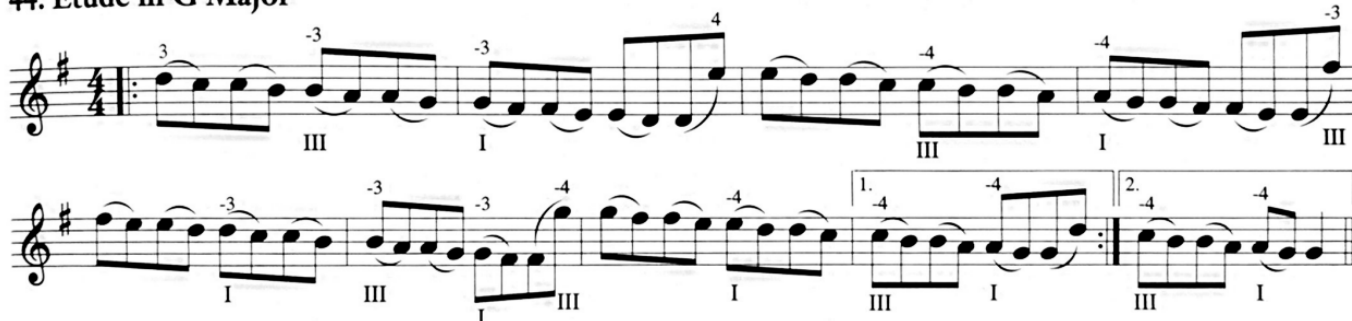
### Tips & Tricks

- I am listening for **INTONATION** and **SHIFTING ABILITY**, meaning:
  - Are you playing the correct notes based on the key signature(s)?
  - Are your 4th fingers high enough? (Check with your open strings when practicing.)
  - If you're **shifting**, make sure that **REPEATED** notes (B to B, C to C, etc.) are the **same pitch**. Use a tuner and your ears to check your work. 😊

## VIOLIN (Etude #1)

**SUGGESTED TEMPO:** Quarter note = 80

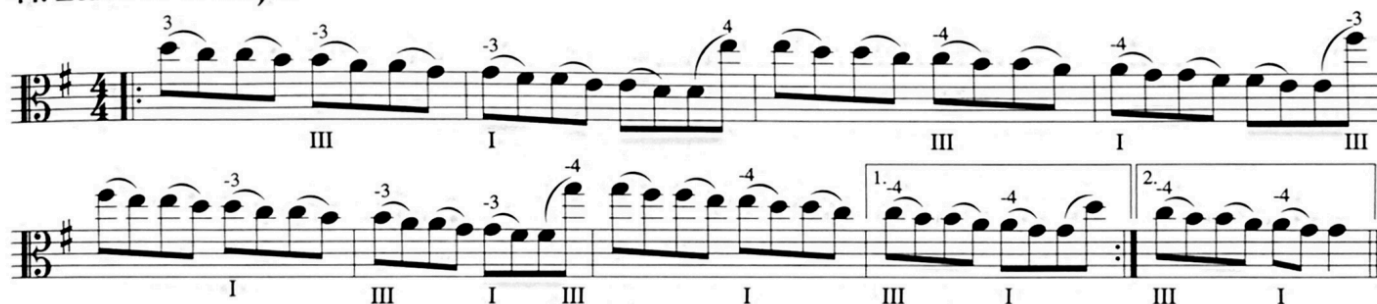
### 44. Etude in G Major



## VIOLA (Etude #1)

**SUGGESTED TEMPO:** Quarter note = 80

### 44. Etude in G Major



# CELLO (Etude #1)

**SUGGESTED TEMPO:** Quarter note = 80

## 44. Etude in G Major

## BASS (Etude #1)

**SUGGESTED TEMPO:** Quarter note = 80

#### 44. Etude in G Major

44. Etude in G Major

III II $\frac{1}{2}$  I II I IV III II $\frac{1}{2}$  I II I V

IV III II $\frac{1}{2}$  I II V IV III II $\frac{1}{2}$  I III II $\frac{1}{2}$  I

# ETUDE #2: Musicality & Tone Production Etude

Everyone plays this excerpt for ensemble consideration.

## Tips & Tricks:

- For this excerpt, I am looking and listening specifically for how musical you can make the etude and where your tone production is at.
  - Are you observing all of the **dynamic** and **style** markings?
  - Is your **left hand** in the **correct shape** to play all the notes with **ease**?
  - **Where** is your bow in relation to the **bridge/fingerboard**?
  - Are you at the **balance point** when you should be?
  - Do you have a **nice warm** and **full sound** on **all notes** and **every string**?
  - Are you using the **right amount** of **bow speed** and **weight** for what the markings suggest?

## VIOLIN (Etude #2)

SUGGESTED TEMPO: Quarter note = 60



## VIOLA (Etude #2)

SUGGESTED TEMPO: Quarter note = 60



## CELLO (Etude #2)

SUGGESTED TEMPO: Quarter note = 60



## BASS (Etude #2)

SUGGESTED TEMPO: Quarter note = 60



# EXCERPT #1: Varsity/Section Leader Excerpt

If you wish to be considered for Concertino (Varsity) or Section Leader, please prepare this excerpt.

## Tips & Tricks:

- For this excerpt, I am listening for the following things:
  - Intonation - are you playing the right notes with the right fingerings?
  - Musicality - how would you shape this phrase to make it "sing"?
  - Rhythmic Accuracy - are you playing correct rhythms and are you playing with a steady beat throughout the excerpt?

## VIOLIN (Excerpt #3)

**SUGGESTED TEMPO:** Quarter note = 58



Violin Excerpt #3 musical score. The excerpt is in G major (one sharp) and 4/4 time. It begins at measure 21 with a quarter note G4, marked *unis.* and *Lento* (♩ = 58). The melody continues with eighth and sixteenth notes, marked *mf*. At measure 25, there is a *ff* dynamic marking. The piece concludes with a *rit.* (ritardando) and a *mf* dynamic. Fingerings (1-4) and bowing (div.) are indicated. A VI (Viola) part is also visible at the end of the excerpt.

## VIOLA (Excerpt #3)

**SUGGESTED TEMPO:** Quarter note = 58



Viola Excerpt #3 musical score. The excerpt is in G major (one sharp) and 4/4 time. It begins at measure 11 with a quarter note G3, marked *mf*. The melody continues with eighth and sixteenth notes, marked *p* (piano) and *mf*. At measure 13, there is a *Play* marking. The piece concludes with a *mf* dynamic. Fingerings (1-4) and bowing (div.) are indicated. A VI (Viola) part is also visible at the end of the excerpt.

## CELLO (Excerpt #3)

SUGGESTED TEMPO: Quarter note = 58

5 *a tempo*  
*mf*

9 *opt. div.*  
*f* *unis.* 1 4 1 4 *mf* *mp*

Detailed description: This block contains the musical notation for measures 5 through 9 of the Cello Excerpt #3. Measure 5 is marked with a box containing the number 5 and the tempo instruction 'a tempo'. The dynamic is 'mf'. Measures 6 through 9 feature a complex rhythmic pattern with sixteenth and thirty-second notes. Measure 6 has a dynamic of 'f'. Measures 7 and 8 have a dynamic of 'mf'. Measure 9 has a dynamic of 'mp'. The notation includes various articulations such as slurs, accents, and fingerings (1, 4, 1, 4).

## BASS (Excerpt #3)

SUGGESTED TEMPO: Dotted quarter note = 60

6 8 29 *ff*

30 35 *mf*

Detailed description: This block contains the musical notation for measures 29 through 35 of the Bass Excerpt #3. Measure 29 is marked with a box containing the number 29 and a dynamic of 'ff'. Measures 30 through 35 feature a complex rhythmic pattern with sixteenth and thirty-second notes. Measure 30 has a dynamic of 'mf'. Measure 31 has a dynamic of 'ff'. Measure 32 has a dynamic of 'mf'. Measure 33 has a dynamic of 'ff'. Measure 34 has a dynamic of 'mf'. Measure 35 has a dynamic of 'mf'. The notation includes various articulations such as slurs, accents, and fingerings (1, 4, 1, 4).