

ESXi - The attempted operation cannot be permitted in the current state (Powered Off)

The attempted operation cannot be permitted in the current state (Powered Off)

Answer:

made changes to the VM using Remote Console (removed ISO from DVD). Received the same error. I had to un-register the VM, then re-register the VM and now it boots fine.

OR

Clone the virtual machine and try to open the virtual clone vm - its OK.

Powered Off VM cannot be Powered On

A powered off VM on ESXi 6.5 will not power on and returns the error “Failed to power on virtual machine.... The attempted operation cannot be performed in the current state (Powered off)”.

(i.e. the VM cannot be powered on BECAUSE it is not powered on!)

Failed to power on virtual machine R-test1. The attempted operation cannot be performed in the current state (Powered off). Click here for more details. - dismiss

PerformanceEventsTasksLogsNotifications

⌂⚙

Task	Target	Initiator	Queued	Started	Result	Completed
Power On VM	R-test1	root	02/19/20...	02/19/20...	Failed - The att...	02/19/20...
Power On VM	R-test1	root	02/19/20...	02/19/20...	Failed - The att...	02/19/20...
Power On VM	R-test1	root	02/19/20...	02/19/20...	Failed - The att...	02/19/20...
Reconfig VM	R-test1	root	02/19/20...	02/19/20...	Completed suc...	02/19/20...

Power On VM

Key

haTask-161-vim.VirtualMachine.powerOn-1270748

Description

Power On this virtual machine

Virtual machine

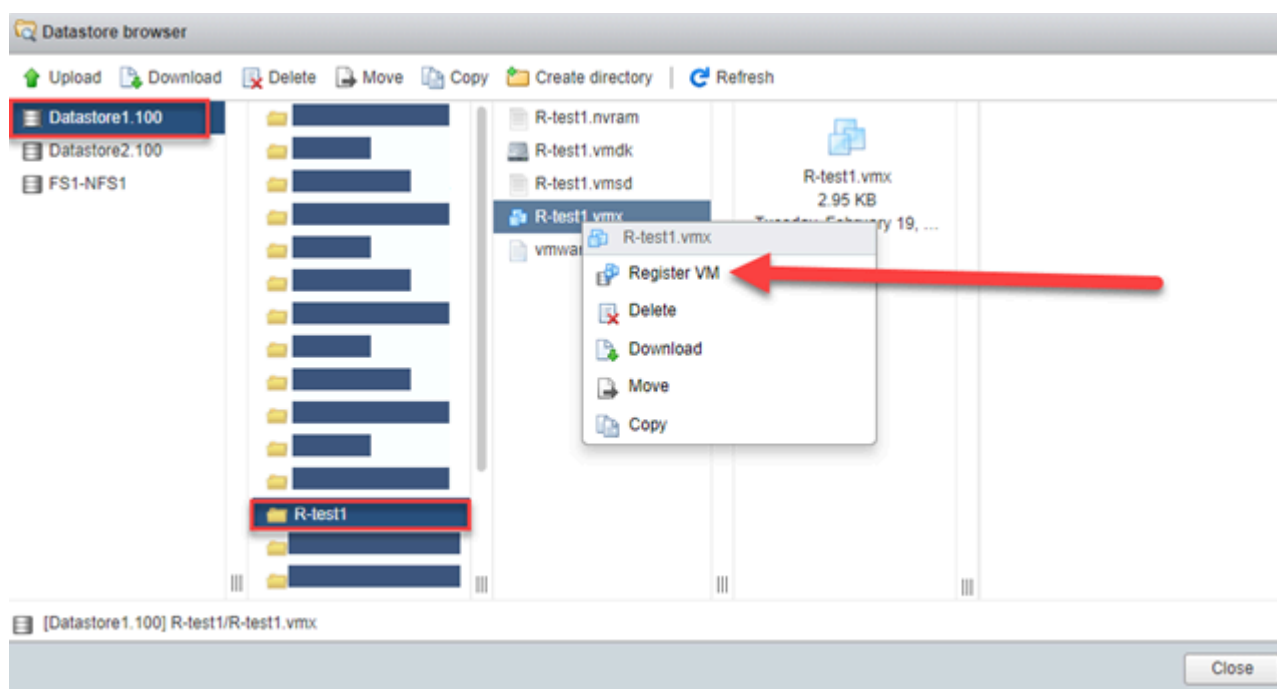
R-test1

State

Failed - The attempted operation cannot be performed in the current state (Powered off).

Errors

Prior to being powered down the VM properties had just been modified. In this particular case it was immediately following a manual Ubuntu install and the install DVD (from a datastore ISO) was disconnected and the CD Drive switch to” “Host Device”. These operations were performed from the ESXi Web interface. Repeated attempts to start the VM all fail the same way.



OR

operation cannot be performed in the current state (Powered Off) VMware Error (Solved) :

The attempted operation cannot be performed in the current state (Powered Off)

First, you need to power-off the vm, but you can't power off from vSphere or vCenter.

So login to the ESXi server via ssh.

And use the "esxtop" and need to find out the WID of that vm's process and kill it.

#esxtop

By default, esxtop won't show the WID, you need to enable in the feild order.

So Press "f"

and choose the WID feild and press "Enter".

```

192.168.1.121 - PuTTY

Current Field order: ABcDEFghij

* A: ID = Id
* B: GID = Group Id
  C: LWID = Leader World Id (World Group Id)
* D: NAME = Name
* E: NULD = Num Members
* F: %STATE TIMES = CPU State Times
  G: EVENT COUNTS/s = CPU Event Counts
  H: CPU ALLOC = CPU Allocations
  I: SUMMARY STATS = CPU Summary Stats
  J: POWER STATS = CPU Power Stats

Toggle fields with a-j, any other key to return: █
  
```

Now it's showing WID at the esxtop field. And record the WID of your vm name.

4:00:16am up 170 days 1:38, 327 worlds, 8 VMs, 14 vCPUs; CPU load average: 0.47, 0.44, 0.44

PCPU USED(%): 9.9 66 25 23 3.0 195 11 26 AVG: 45

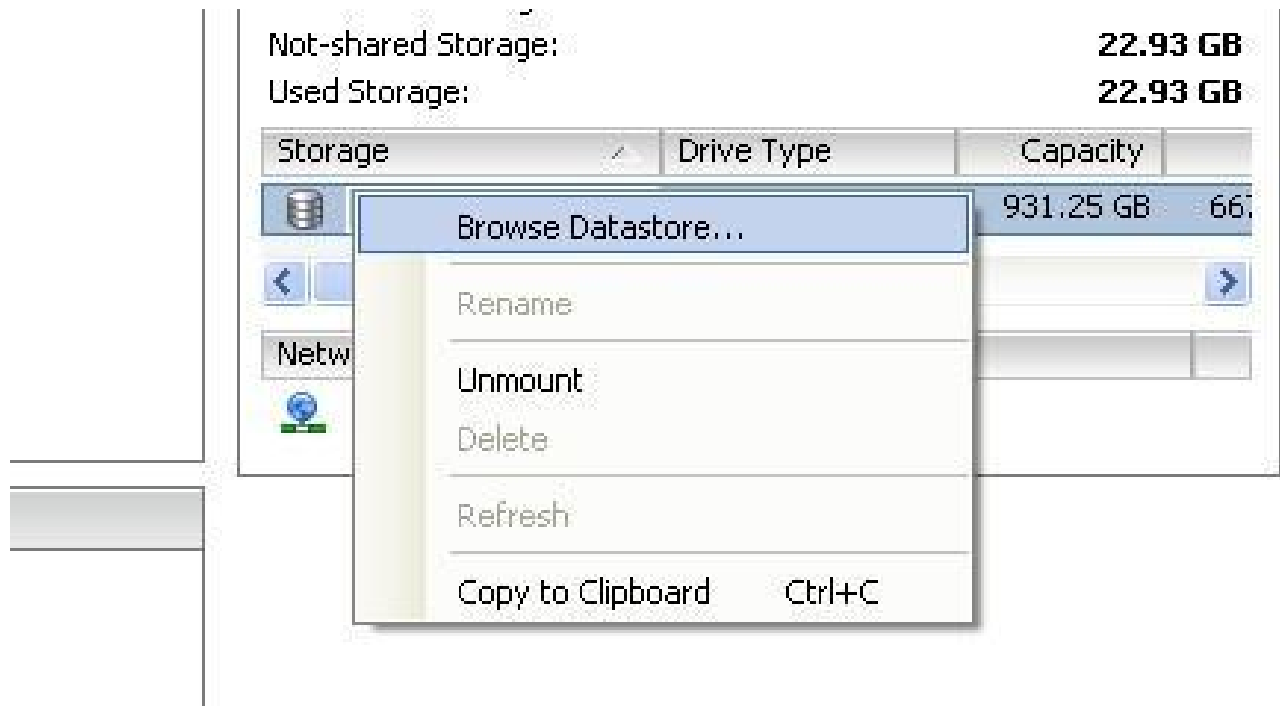
PCPU UTIL(%): 18 76 28 26 6.2 100 14 24 AVG: 36

CORE UTIL(%): 78 48 100 36 AVG: 66

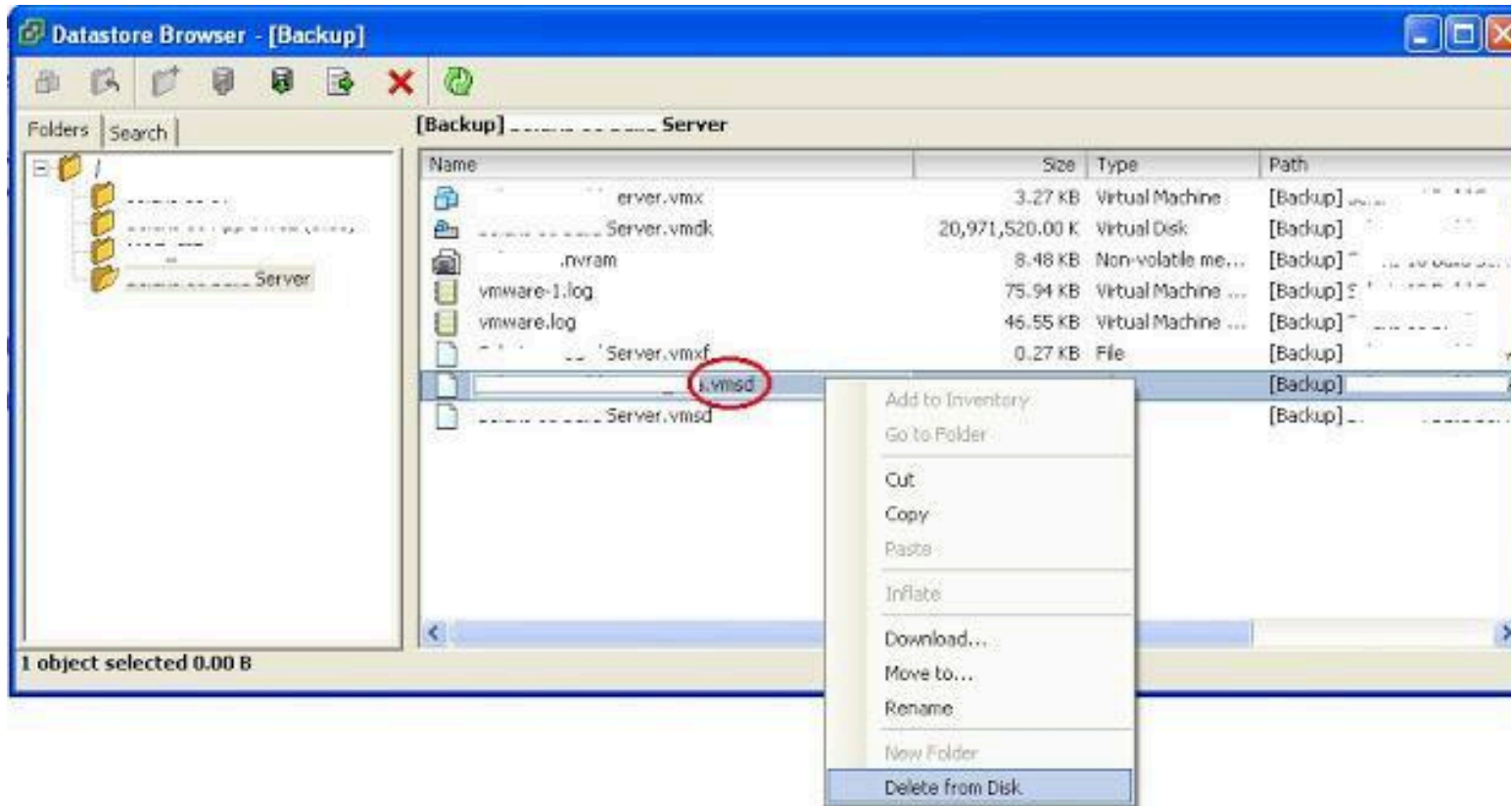
ID	GID	LWID	NAME	NWLD	%USED	%RUN	%SYS	%WAIT
1340124	1340124	1587506		5	0.01	0.00	0.00	0.0
1	1	0	idle	8	0.00	0.02	0.00	0.00
1278957	1278957	1515293		8	0.00	0.00	0.00	0.0
8143318	8143318	9707102	esxtop.9707102	1	0.00	0.00	0.00	0.0
1278752	1278752	1513028		8	0.00	0.00	0.00	0.0
8142419	8142419	9708034	sshd.9708034	1	0.00	0.00	0.00	0.0
1278963	1278963	1515315		5	0.00	0.00	0.00	0.0
2753820	2753820	3263594		5	0.00	0.00	0.00	0.0
1278960	1278960	1515305		6	0.00	0.00	0.00	0.0
2419912	2419912	2866903		5	0.00	0.00	0.00	0.0
1279	1279	3400	sfcb-ProviderMa	10	0.00	0.00	0.00	0.03
2	2	0	system	8	0.00	0.00	0.00	0.02

And To kill the process, press "k" and put the WID of your vm then press enter . Now you can quit from the esxtop, Press "q". Check at the vSphere, you will be see your vm is already power off.

Now you need to go VM folder location, So browse the datastore, and find your vm image folder and browse it.



There, you will be found "xxxxx.vmsd" file and delete it.



Now you can power-on the vm image again, It will up successfully without error. :)

-----XXXX-----

RESOLUTION

This issue is caused by your Virtual Machine still have a reference to something in its configuration file which is no longer available. This could be a removed ISO that is still mounted against its CD-ROM, a removed named serial pipe etc etc.

In order to resolve this issue you will need SSH access to your ESX box.

Below are the required steps involved,

1. SSH to your device
 2. Find you configuration file for your Virtual Machine in question via the command `find / -name "*"vmx"`
 3. edit this file using the vi command. `#vi [path].vmx`
 4. Within here you should find reference to a peripheral for your virtual machine that is causing the issue. You may have a reference to a ISO that is no longer in your datastore. Or a named piped that you have removed. For this hashed out the required line. Then save the file.
- Now try to start your Virtual Machine.**