



St Paul's Collegiate School



SCUBA DIVING CLUB

Learn to dive or continue your diving adventures!



Join the St Paul's Scuba Diving Club

For divers of all levels of experience or none at all

Learn to dive or come for a dive (if already qualified) or just hunt for a cray

Take the next step with the Advanced or Rescue Course

Join our scuba diving weekends to learn or as an already qualified diver for more experience & fun! Weekend diving experiences in the Coromandel.



Open Water Course with SSI

(Scuba Schools International)

LEARN TO SCUBA DIVE WITH GET WET WAIKATO

If you've always wanted to learn to Scuba Dive, have some adventures and experience the world below the ocean then this is a course for you! Training to achieve your Open Water Diver rating through training agency Scuba Schools International supported by Rev (PADI Instructor) and the team at GetWet Waikato.

With an SSI Open Water Diver Certification, you will be qualified for life as an Open Water Diver and such will enable you to dive with a buddy to a maximum depth of 18 metres, and is the foundation for you to continue your dive education to an Advanced Adventurer Diver level and beyond.....Open to ALL to all year levels - aged 15+ to become an Open Water Diver and aged 12-14 for Junior Open Water rating, automatically upgrading to full Open Water when 15.

The SSI Open Water Diver certification is recognised worldwide.

In general, an Open Water Diver course consists of 3 parts: Theory, Pool Training and Open Water Sessions.

Theory:

Training materials and the online training program are designed so that you can learn the theory at your own pace when it's convenient for you prior to your course commencement. You complete the theory online when you sign up for an online training program, your course will commence with a theory review session to discuss your learning in more detail to allow you to have any questions answered.

POOL TRAINING: one whole day 9 am-4 pm on a Wednesday just before the weekend open water diving

You will practise and complete all the skills you will use in the ocean under the guidance of one of our experienced instructors. Learning is fun and this gives you the opportunity to perfect your skills in preparation for your open-water diving.

OPEN WATER SESSIONS:

Based in Whitianga (Mercury Islands) you will complete at least 4 Open Water Dives and have the chance to experience everything you learned in the pool hands-on. After successful completion of your open-water training dives, you will become a Certified Open Water Diver. Diving will be from dive boats, not shore-based as with other cheaper options, to give our students the best experience possible of scuba diving in New Zealand's amazing waters.

EQUIPMENT:

All equipment required for the duration of your course is provided by Get Wet Waikato

PRICING


\$699 per person including all course material and equipment required for the duration of the course. This does **NOT** include overnight accommodation, transport and food, budget a further \$400 approx. for that. Please note that **part** of this \$699 cost is **non-refundable** in the event of non-attendance as it includes a fee paid directly to SSI for the online learning materials. These materials can be used in conjunction with another SSI Open Water Course at **any** SSI centre at a future date. The non-refundable deposit is currently **\$250**. ***In addition please note that if you cancel your course booking for any reason and wish to reschedule to a later course GetWet Waikato levy a further \$200 administration fee.***

PREREQUISITE:

Dive Medical – Completed within the last 12 months with your **OWN GP (THE SCHOOL DOCTOR DOES NOT DO DIVING MEDICALS ANY LONGER)** – required **BEFORE** any pool or open water diving - **FURTHER NOTE RE DIVE MEDICALS** - These need to be completed before any diving if you are on an SSI/PADI diving course. Please arrange with your GP for sign-off and send them to me. **If you have already completed a diving medical** and continue to respond to all medical questions on the form with the answer “No” and there have been no changes to any of your health/medical details/medications since the last medical **you do not**

need to repeat this process with your GP but you will need to complete the medical form and send it to me.

This is the process from here: FOR THE OPEN WATER COURSE OR ADVANCED ADVENTURER OR STRESS AND RESCUE

1. Please read through all this information with your parents/caregivers:
2. Choose your preferred course date (subject to availability at the time of booking) (*details in this document*)
3. Complete the sign-up form and return it to me (revpeter@stpauls.school.nz) **AND TO** info@getwetwaikato.co.nz electronically: HERE IS THE FORM: [SCUBA SIGN UP FORM.docx](#)
4. Pay the course Fees of \$699 (or as priced) directly to Get Wet Waikato (details on sign up form) - this will see an online learning code issued to you to your provided email mail address (**check your spam folders**). To redeem the code go to www.divessi.com/en/get-certified/scuba-diving/open-water-diver - *details on sign up email from SSI/GetWet Waikato*
5. Complete the Medical Form, take it to your GP and complete all relevant sections. (***If this is your first course you will need sign off from your GP even if you answer "NO" to all the questions - this is a school requirement and will not need to be repeated for future courses unless your medical details/conditions change - if they do change you will need another GP medical***) Return the completed medical form to me (revpeter@stpauls.school.nz) **AND TO** info@getwetwaikato.co.nz electronically. Medical form link: [SSI DIVE MEDICAL FORM FOR GP](#) Please also complete this form:  UNDERSTANDING THE RISKS 2024.pdf
6. GetWet Waikato will send you more forms to complete - complete and return those ASAP to them: info@getwetwaikato.co.nz
7. Complete the SSI (Scuba Schools International) online learning which is required before the first day of training in the swimming pool. Speak to Rev if you have any questions about this.
8. Join(diver and parents/caregiver) the SPC Scuba Diving Google classroom code **hdd3xgx**
9. Turn up for the pool sessions and learn to dive – Prepare for an adventure!

The maximum number of students per course is 8 - selection will be on a "first come first served" basis with sign-ups. Once a course is full, we will plan for another if there is demand.

Other courses such as the SSI Advanced Adventurer course, Stress & Rescue Diver and sundry other speciality courses are available as well.

Please call Rev (or email) directly to discuss this. 021 1977788

ALREADY QUALIFIED AS AN OPEN WATER DIVER OR ABOVE?

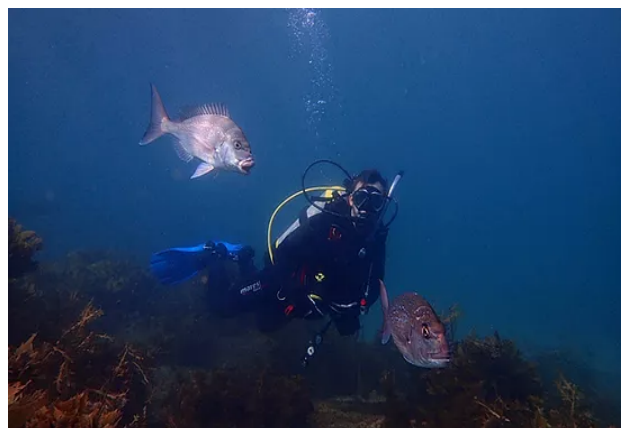
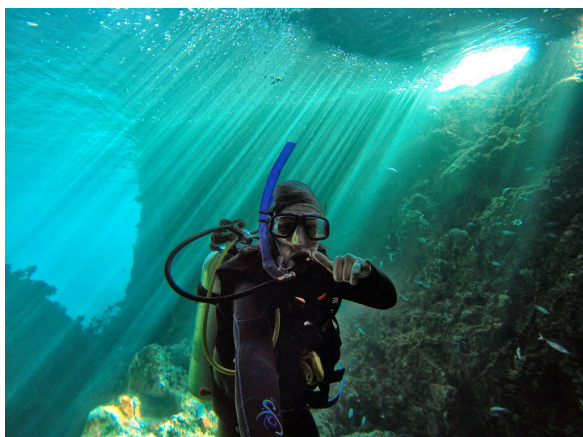
WE ARE A SCUBA DIVING CLUB SO THERE ARE SPACES ON THESE WEEKENDS AND COURSES FOR QUALIFIED DIVERS WHO WOULD JUST LIKE A WEEKEND OF BOAT DIVING WITH A BUDDY - First come first served basis - COST Boat Diving Only \$400 pp for the weekend plus accommodation/meals (\$400 approx.). Sign up form here [click for boat diving only](#).

THE NEXT OPEN WATER COURSE IS DETAILED BELOW....

Any questions?

Rev 021 1977788 revpeter@stpauls.school.nz PADI MSDT (Instructor 651699) SSI OW Instructor 1089

Mark or Gav @ GetWet Waikato 07 849 1922



Course Dates Term 4 2024 - 8 spaces for each course ONLY and/or dive trip (week-end)

OPEN WATER/ADVANCED/RESCUE or SPECIALITY Course 1 - Nov 8-10th

Wed Nov 6th 9 am-4 pm Pool training - for new divers or divers on their next course

Nov 8th - 10th Friday pm – Sunday pm Open Water Diving Whitianga

COMPLETE & RETURN THIS FORM TO BOOK: [W SCUBA SIGN UP FORM.docx](#)

(and pay \$699 fees as directed to secure your place.)

THEORY & POOL SESSION OVER 1 DAY (GET WET WAIKATO 451 TE RAPA RD)

9 am-4/5 pm - Bus leaves school at 845am -bring togs, towels, water bottles and snacks with you. I will organise a takeout lunch to be collected when we leave and taken with us. We should be back at school by 4 pm

OPEN WATER DIVES

DEPART FRIDAY AFTERNOON BY SCHOOL VAN TO WHITIANGA - Usually between 2-330pm - I will advise via ConsentToGo notice

RETURN 6 pm approx. TO SCHOOL ON SUNDAY

DIVING: SAT AND SUN – 2 DAYS, 4 DIVES – BOAT DIVING FROM WHITIANGA MERCURY ISLANDS (WEATHER DEPENDENT- *back up dive site Lake Rotoma/Kinloch if weather poor*) - COSTS COVERED BY COURSE COSTS

ACCOMMODATION

2 NIGHTS AT HARBOURSIDE HOLIDAY PARK WHITIANGA or THE WHITIANGA CAMPGROUND - all students will be in comfortable cabins in small groups.

ACCOMMODATION COSTS AND ANY FOOD COSTS DISBURSED TO SCHOOL ACCOUNTS (APPROX \$400 **IN ADDITION** TO \$699 COURSE OR \$400 BOAT DIVING COSTS)

PLEASE COMPLETE THE BOOKING FORM, AND MEDICAL FORM, MAKE PAYMENT & BOOK MEDICALS WITH YOUR GP. **RETURN THE COMPLETED SCANNED FORMS TO ME** AND AN ONLINE LEARNING CODE WILL BE SENT TO YOU SO THAT YOU CAN START THE THEORY. YOU CANNOT START ANY PRACTICAL DIVING UNTIL THE THEORY IS COMPLETE.

ANY QUESTIONS?

REV PADI MDST INSTRUCTOR 651799 SSI OW INSTRUCTOR 108999

TEL: 0211977788 revpeter@stpauls.school.nz

Bank account details are: - Name: Diver Training Solutions (GET WET WAIKATO) Account No: 01-0450-0474748-00 USE AS REFERENCE YOUR "NAME" and course eg "OW" & "ST PAULS" plus date of course/diving.

[LINK TO THE SIGN UP FORM:](#) [SCUBA SIGN-UP FORM.docx](#)

PLEASE COMPLETE AND RETURN ELECTRONICALLY TO revpeter@stpauls.school.nz AND TO info@getwetwaikato.co.nz plus the SSI medical form as above once completed with your GP/school GP.

