

MODEL **CM4900-3**
INFEEED & BAG TOP TRIMMING DEVICE

Instruction Manual



NING MACHINE WORKS, LTD.

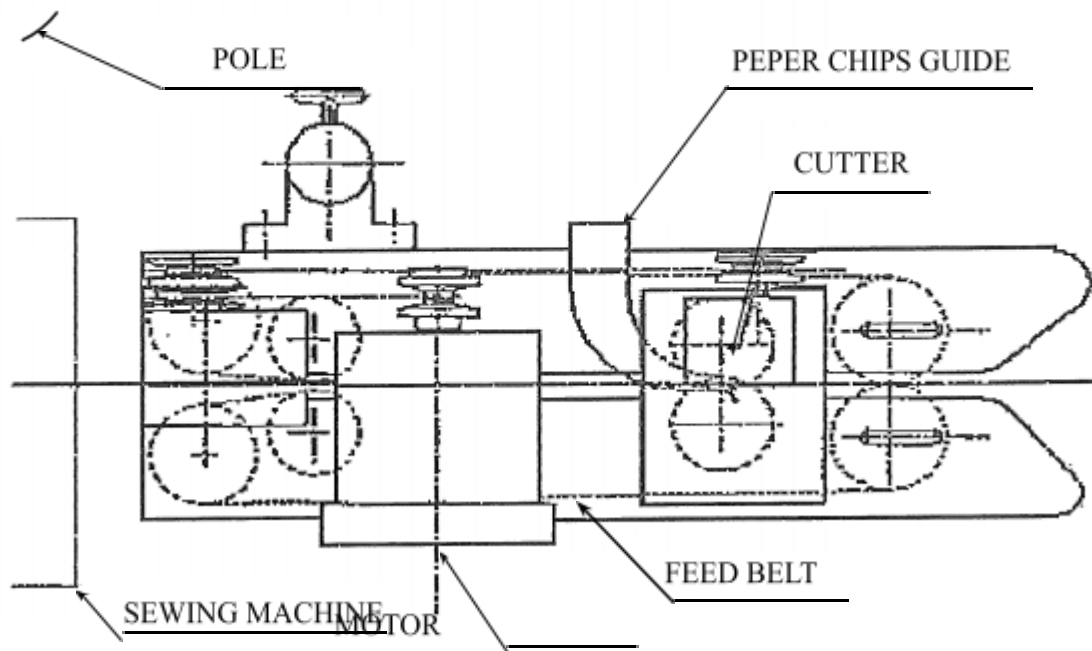
1. GENERAL

Model CM4900-3 is the inserting machine. It holds the bag mouth between the feeding belts and carry bag into the machine.

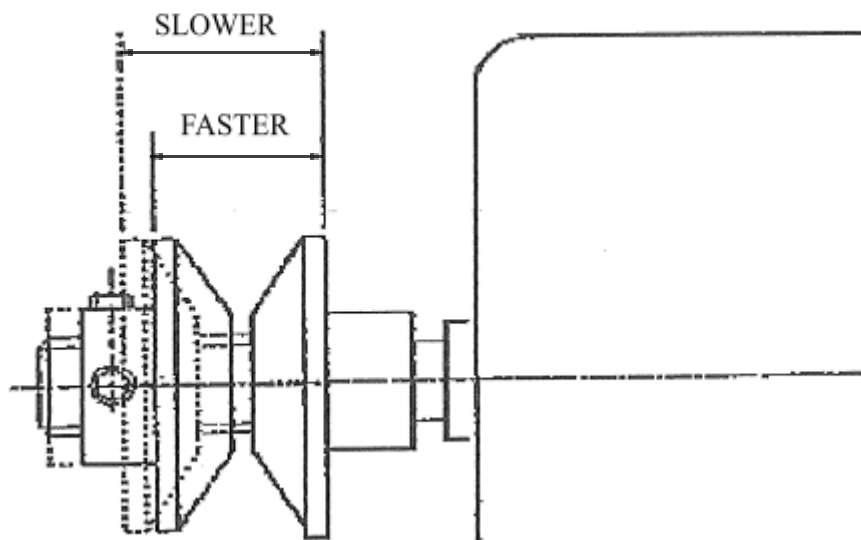
2. COMPONENT

As illustrated, the feeding belts and cutters are driven by the 0.2kw motor.

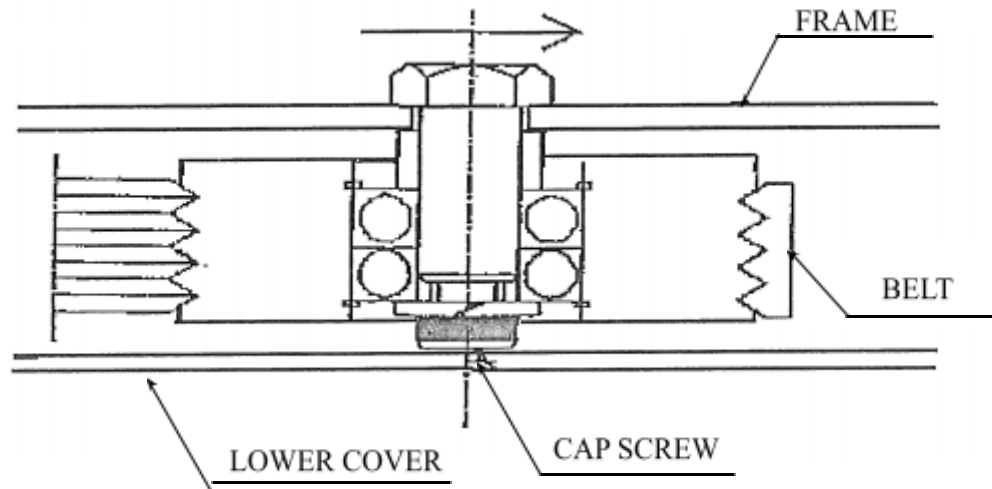
In case which cutter attached, it cuts the bag mouth horizontally and insert it into the sewing machine.



ADJUSTING SPEED OF FEEDING BELTS

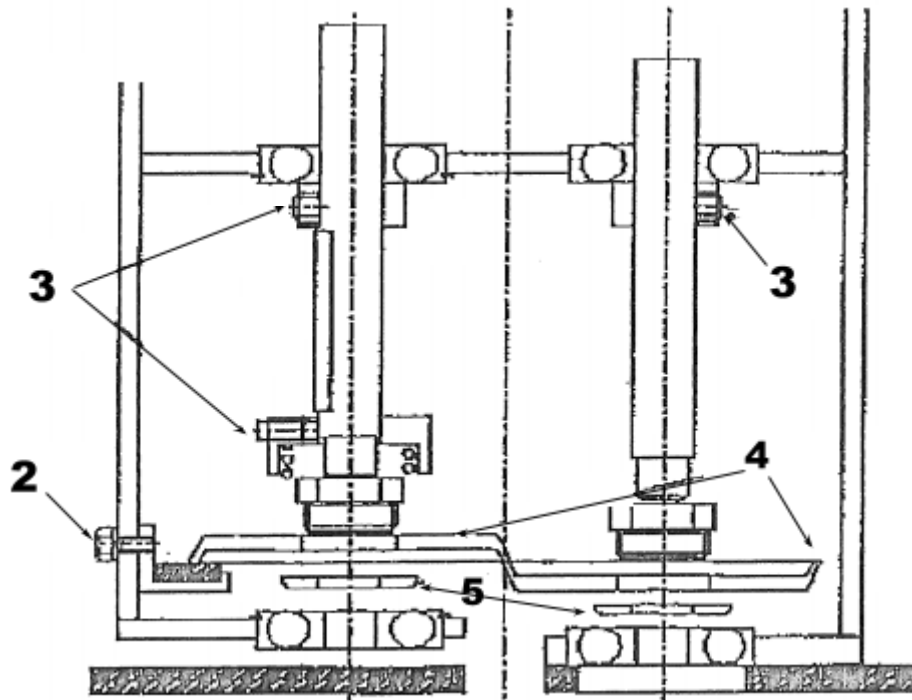


ADJUSTING BELT TENSION

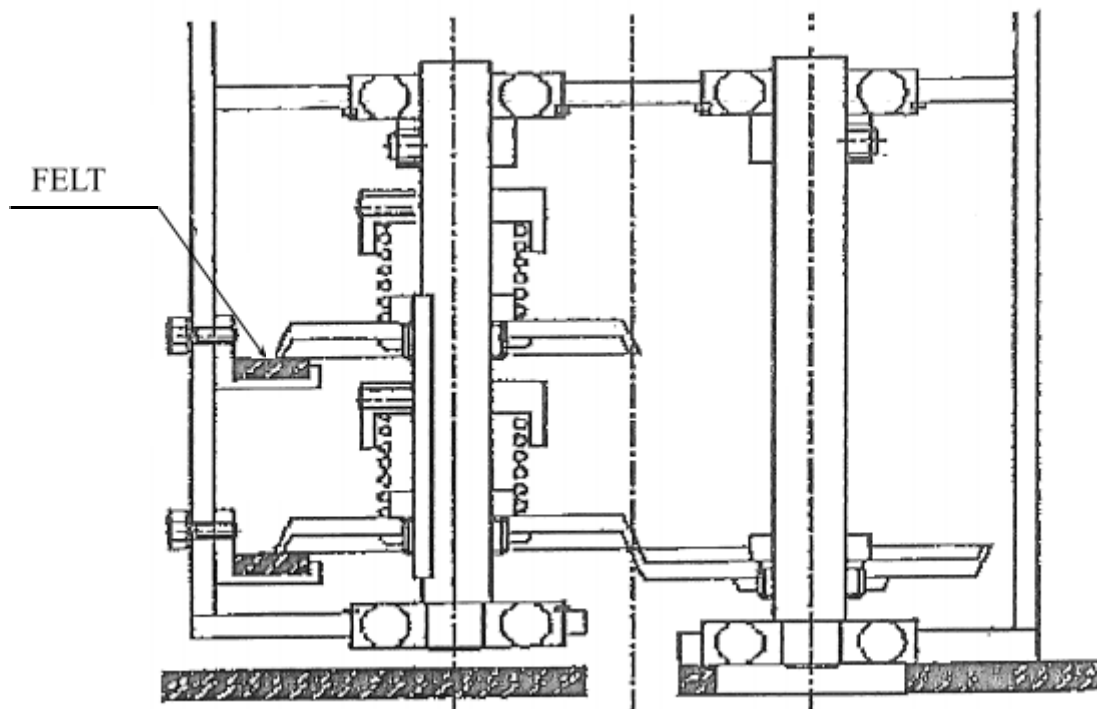


3. ADJUSTMENT

1. To adjust speed adjustment for feeding belts, push and pull the vari-dia pulley, match the belt speed with the conveyor's.
Notice unmatch speed makes bag inclined.
2. To adjust feed belt tension, slide the inlet pulley toward the inlet side along the long hole. Push the head of the hex. bolt on the upper side of the frame by spanner and turn the cup screw. Notice too loose belts makes the pulley drop off.
3. Replacement of cutter (In case of the cutter attached)
 - 1) Put off reducer, V-belt, guide and paper chips guide from the machine.
 - 2) Get down the cutter oil box to the bottom.
 - 3) Loosen each screw of the set collars and pull out 2 shafts upward.
 - 4) Take out 2 cutters.
 - 5) Loosen the nuts and take out the cutters from the wet collars.
 - 6) Put the new cutters in the set collars, and tighten them with the nut.
 - 7) Reverse the procedure from 6 to 1 to make it up again.
4. When you do not use and idle the cutter. (In case of the cutter attached.)
As illustrated, Loosen fixing bolt for oil box and set collar which is above the cutter press spring. Then get the cutter upward. Put the lower side of the cutter on the oil box prevent the cutter from dropping.



IDLING THE CUTTER



4. MAINTENANCE

For adjusting sewing machine, loosen the T-handle which is in the backward of the machine. Then turn the body to get enough space to adjust at the introducing part to adjust.

