

[See this page in the course material.](#)

## Learning Outcomes

- Identify three main browsers used to access the internet.

A web browser (commonly referred to as a browser) is a software application for retrieving, presenting, and traversing information resources on the World Wide Web (also known as the internet or the Net). The most popular web browsers are Google Chrome, Microsoft Edge (formerly Internet Explorer), Mozilla Firefox, and Apple's Safari. If you have a Windows computer, Microsoft Edge (or its older counterpart, Internet Explorer) are already installed on your computer. If you are running an Apple computer, you already have Safari installed on your computer. You may also have other browsers installed on your computer. If the browser you want to use is not installed on your computer, download links for Chrome and Firefox are in their respective sections below.

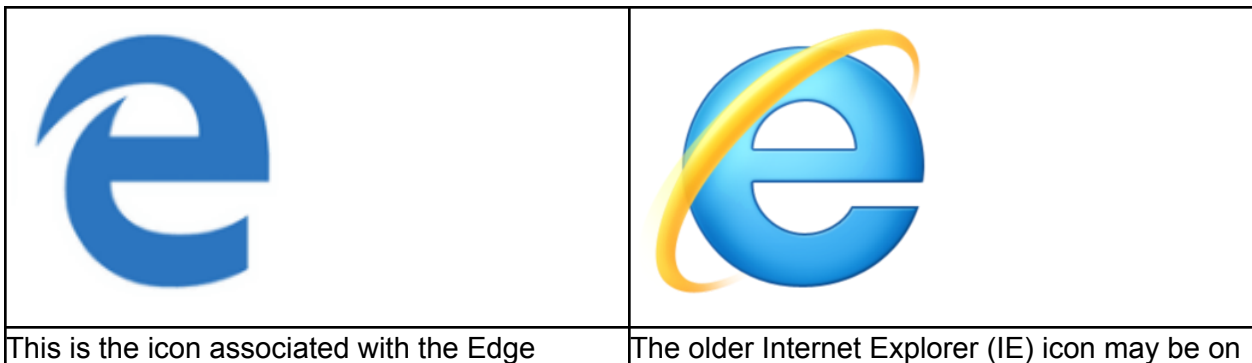
This course will focus first on the three primary browsers (Chrome, Firefox, and Edge) and then walk through a set of tools and skills which can be used in any browser.

## Identifying Browsers

There are three primary browsers that are used to access the internet that you need to be able to identify and use. Each of these browsers is made by a separate company, and has a different look, but there are many tools and shortcuts that can generally be used on any of the browsers.

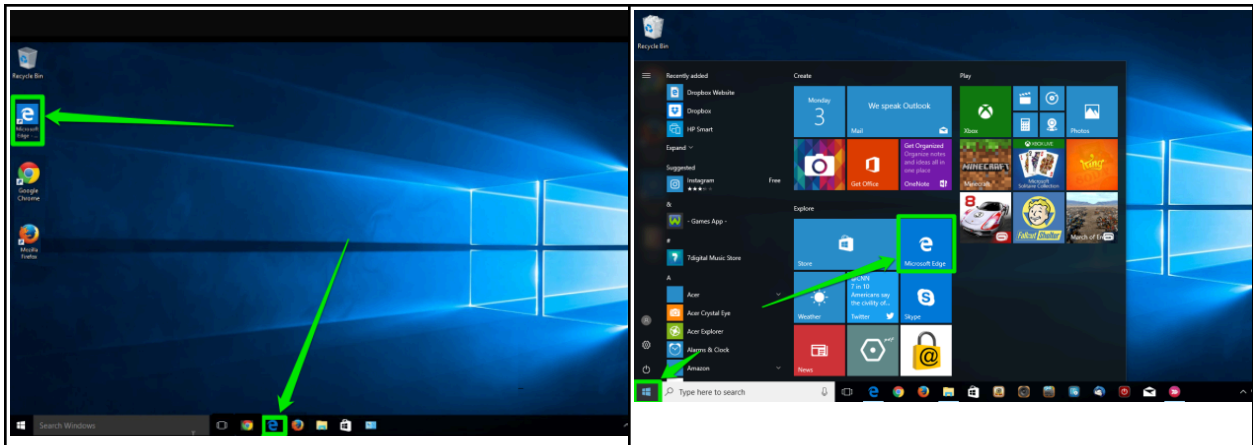
### Microsoft Edge

You have most likely heard the name of one or more of these browsers, but let's first identify the Microsoft Edge browser.

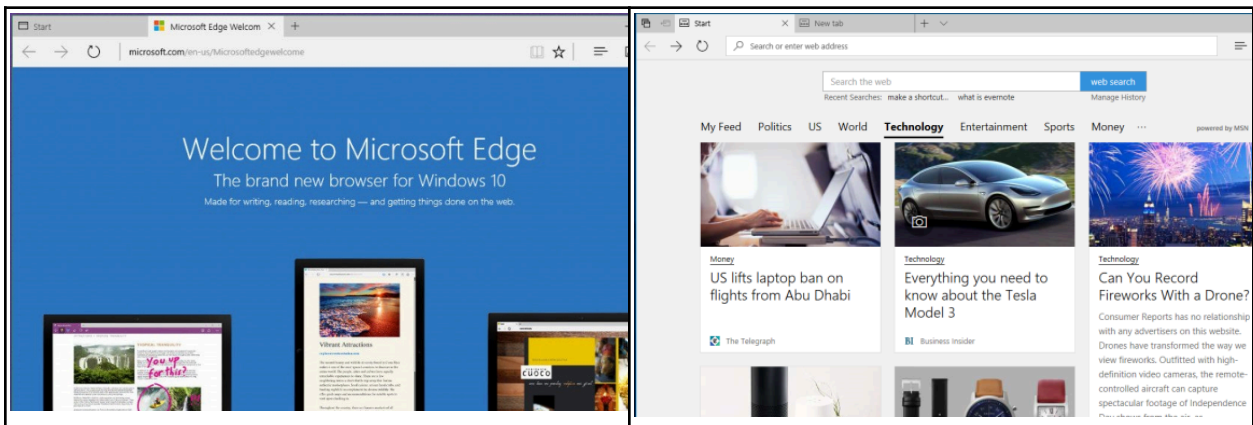


browser. This is a recent change to the original Microsoft browser which was called Internet Explorer. your desktop, but the Edge browser is the preferred browser for Microsoft now. For your reference, the older IE icon looked like this.

Unlike other browsers, which must be downloaded, Microsoft Edge (or Internet Explorer) comes with Windows. That means if you have a Windows computer, Edge (or Explorer) is already on your computer. The Edge icon on a Windows 10 computer system can be found either on the bottom taskbar or along the side. Click on the icon with the mouse and it will open the browser. The icon might be in slightly different places on your desktop, but look for the icon and double click on it to open the browser. Regardless of which version of Windows you have, you can also open the browser from the start menu. Select the start button, and when you see the icon for Edge, select it and it will open.




After clicking with the mouse on the Edge icon, a window will open up and will look like this window if new (#1), or may have a news page displayed (#2), or it will open to the business default page that has already been established by the company's Information Technology (IT) department.



Practice Question

You need to open a browser on your computer. Identify the browser associated with this icon. This icon is the [Select] browser.



Check Answer

[See this interactive in the course material.](#)

## Google Chrome

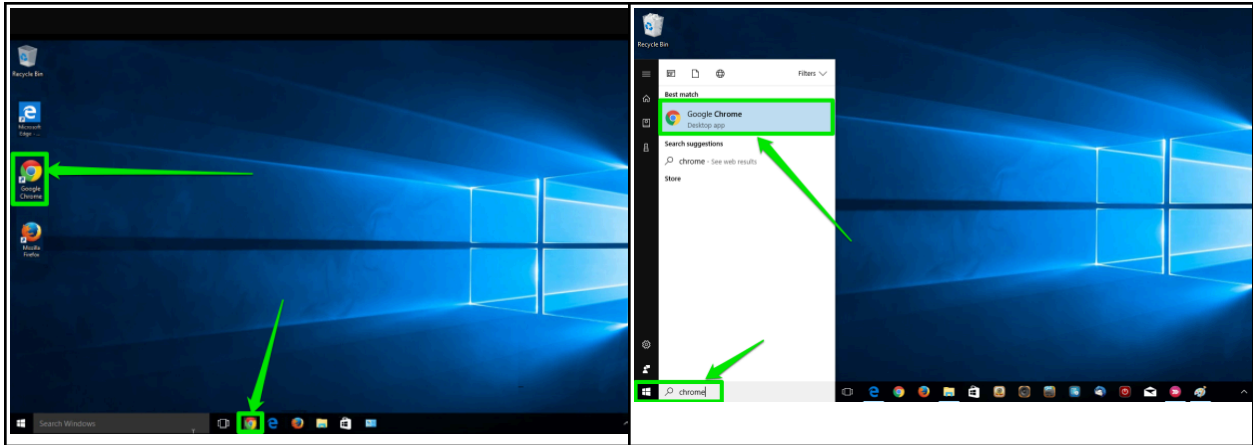


One of the most popular web browsers is Google Chrome (often simply referred to as Chrome). This icon is associated with the Chrome browser. This browser will be used as an example in this course in order to learn basic browser navigation skills and perform the other assignments and tasks associated with this module.

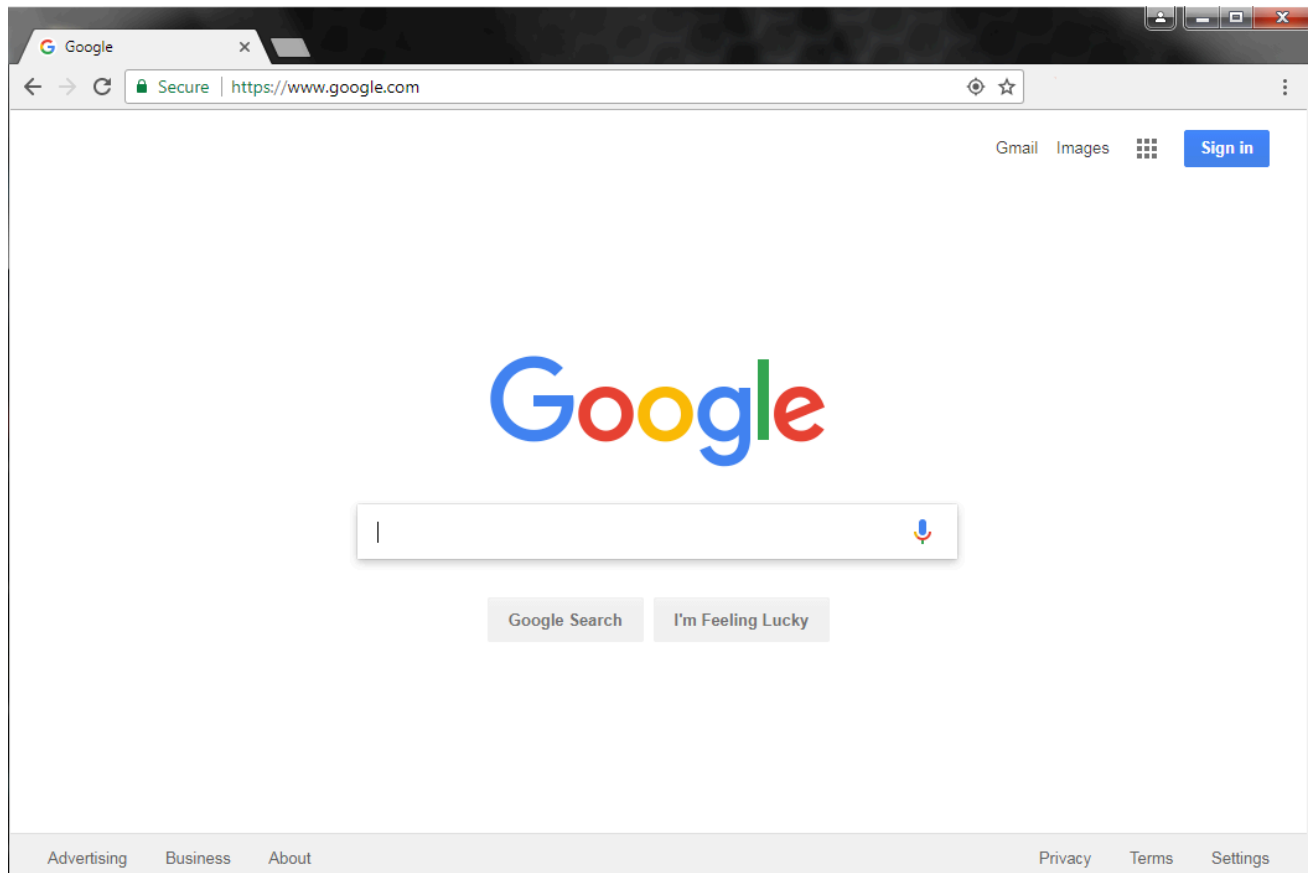
If Chrome is on your computer, the Chrome browser icon can be found on the Windows 10 desktop in the bottom task bar or along the side. Regardless of which version of Windows you have, you can also open the browser from the start menu. Select the start button and type in *Chrome*. If the Chrome browser is on your computer, it will be displayed in the menu, where you can now see the icon and select it to open.

If you wish to use this browser but do not have it on your computer, it can be downloaded and

added by going to this website <https://www.google.com/chrome/> and selecting the *Download* option from the top menu.



After clicking on the Chrome icon, a window will open up and look like this window, or it will open to the business default page that has already been established by the company's IT department. You may already notice that some of the features have similarities between the browser windows. Now to the final browser identification.



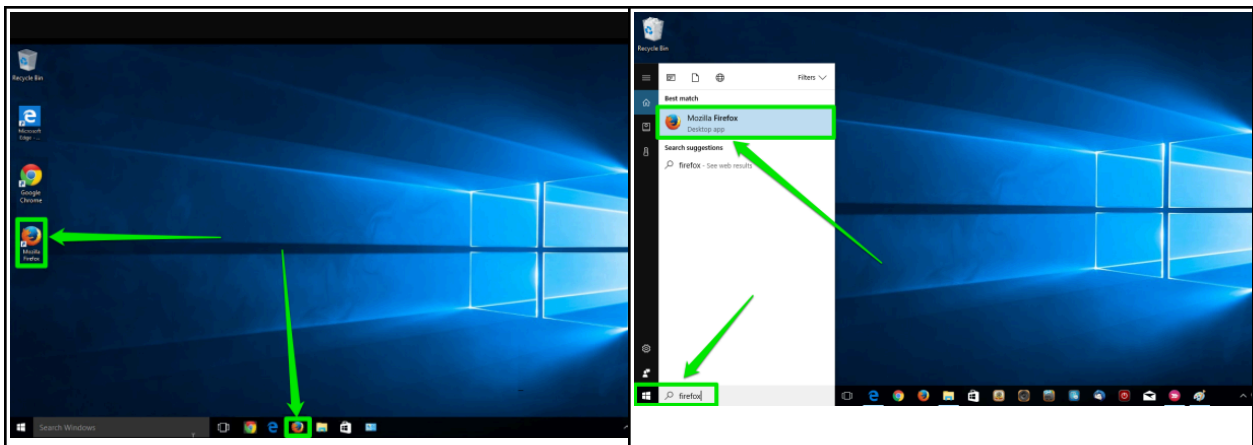
## Mozilla Firefox



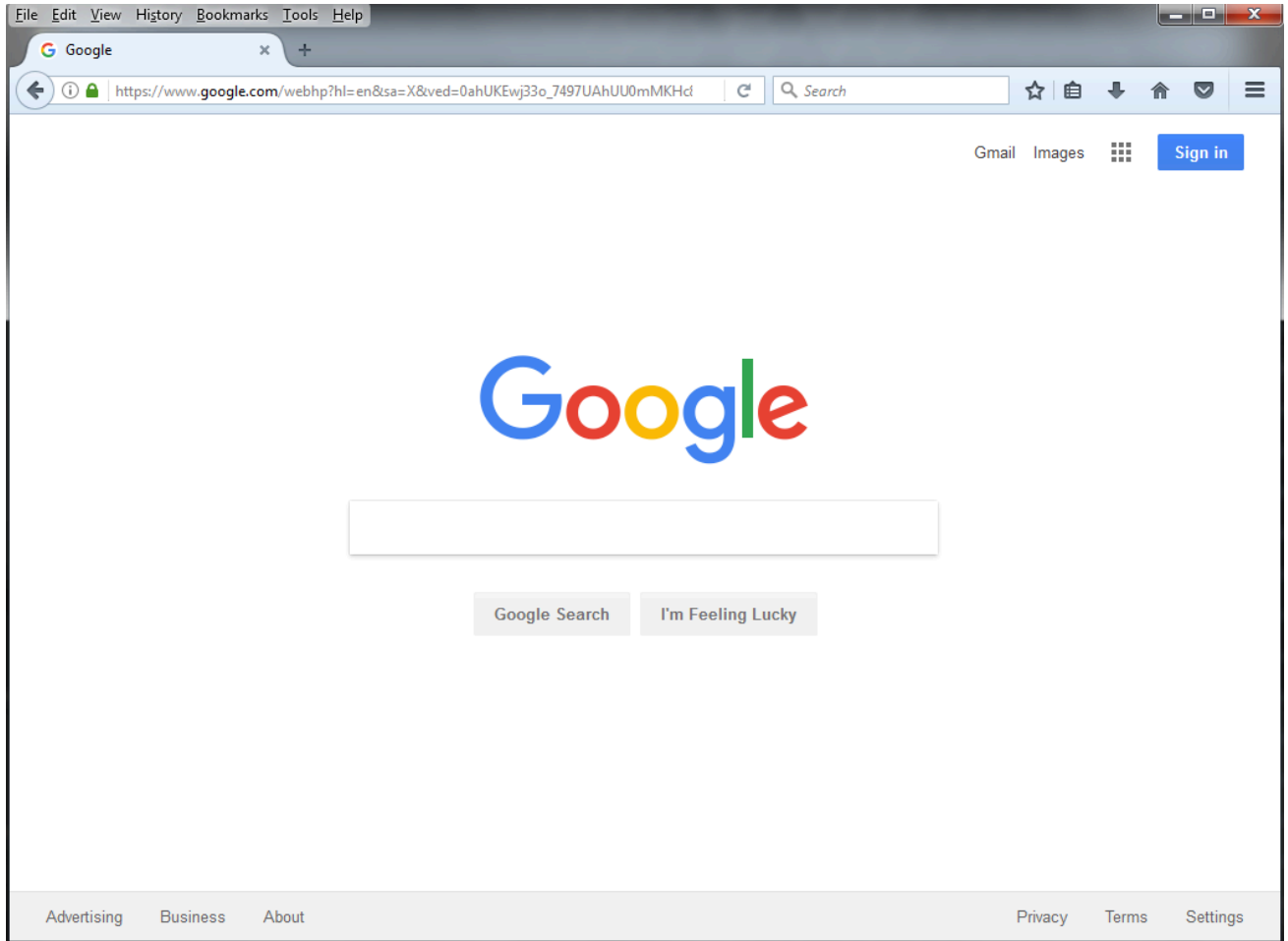
Mozilla Firefox (often simply referred to as Firefox) is a browser created by the company Mozilla and is another browser frequently used to “surf” or search the World Wide Web. This is the icon associated with the Firefox browser.

If Firefox is on your computer, the Firefox icon on your Windows 10 computer system can be found either on the bottom taskbar or along the side. The icon might be in slightly different places on your desktop, but look for the icon and click on it to open the browser. Just like the other two browsers, it may also be opened in the Start menu box by typing *Firefox*, then selecting the option to open it.

If you wish to use this browser but do not have it on your computer, you can open a browser that you do have and use this address to download the Firefox browser <https://www.mozilla.org/en-US/firefox/> onto your computer.




After clicking on the Firefox icon, a window will open and look similar to this window, or will be on a default page that has been set up by the company.



## Practice Question

You need to open a browser on your computer. Identify the browser associated with this icon. This icon is the [Select] browser.



[See this interactive in the course material.](#)

## Licenses and Attributions

### CC licensed content, Original

- Internet Browsers. **Authored by:** Sherri Pendleton. **Provided by:** Lumen Learning. **License:** [CC BY: Attribution](#)

### CC licensed content, Shared previously

- Definition of web browser. **Provided by:** Wikipedia. **Located at:** [https://en.wikipedia.org/wiki/Web\\_browser](https://en.wikipedia.org/wiki/Web_browser). **License:** [CC BY-SA: Attribution-ShareAlike](#)

### Public domain content

- Mozilla Firefox logo. **Provided by:** Wikipedia. **Located at:** <http://logos.wikia.com/wiki/Firefox>. **License:** [Public Domain: No Known Copyright](#)
- Microsoft Edge logo. **Located at:** [http://logos.wikia.com/wiki/Microsoft\\_Edge](http://logos.wikia.com/wiki/Microsoft_Edge). **License:** [Public Domain: No Known Copyright](#)
- Google Chrome logo. **Provided by:** Wikipedia. **Located at:** [http://logos.wikia.com/wiki/Google\\_Chrome](http://logos.wikia.com/wiki/Google_Chrome). **License:** [Public Domain: No Known Copyright](#)

</div