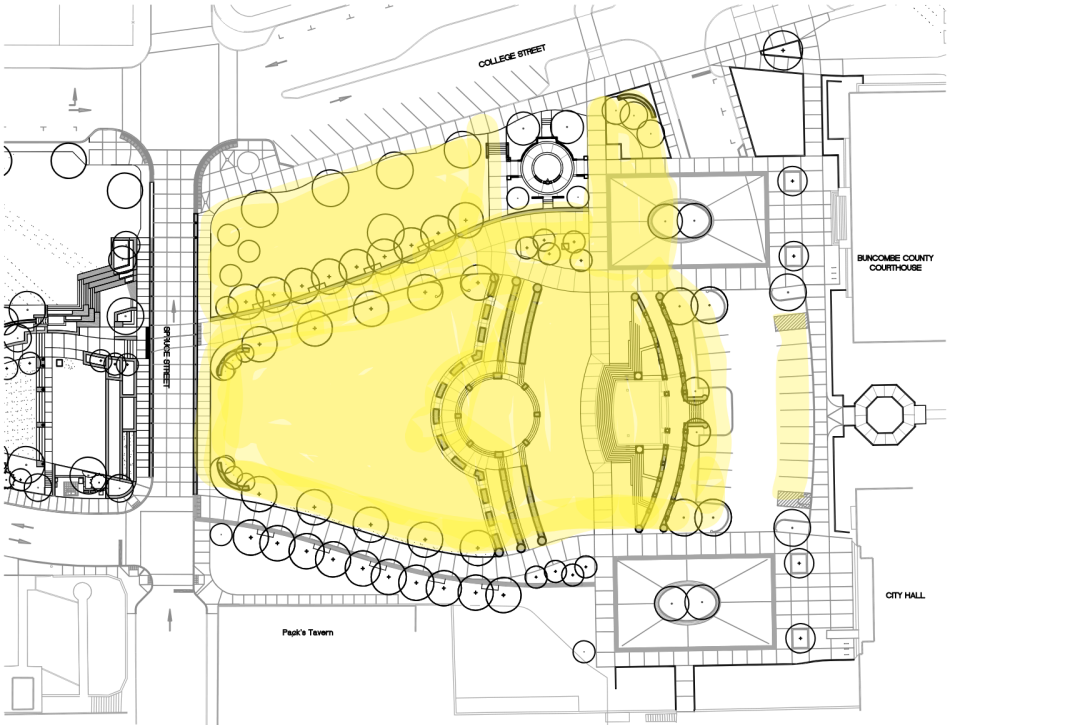


Pack Square Park Maps & Plans

Pack Square Park - Roger McGuire Green

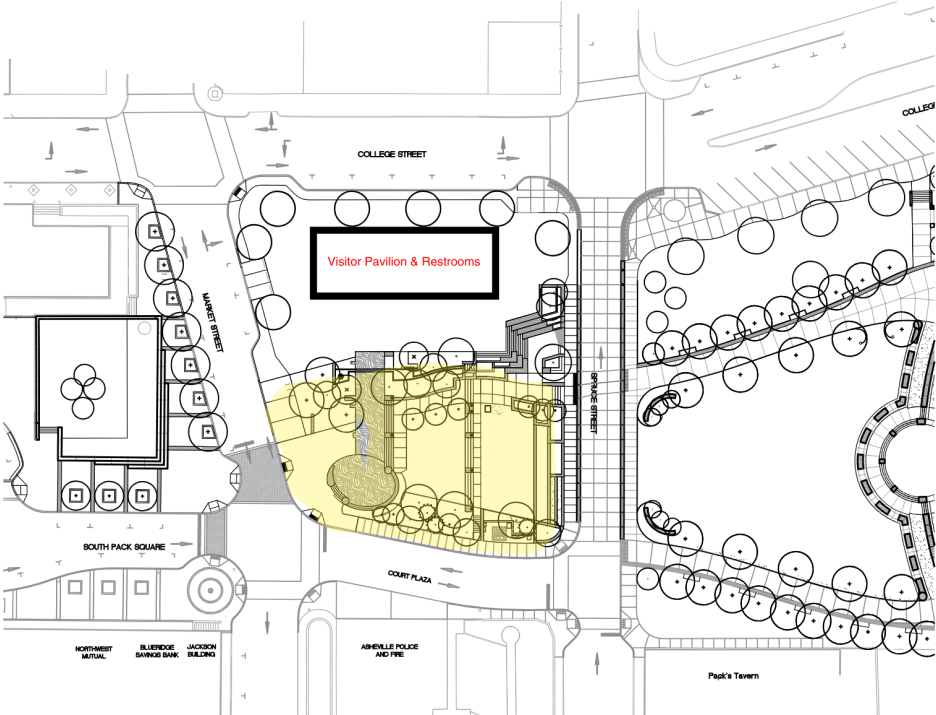


Pack Square Park
Roger McGuire Green

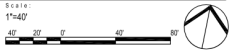


Detailed site plan for Pack Square Park showing the Roger McGuire Green, including a large central lawn and a circular area with three wide steps used for seating, along with a larger circular plaza near the upper sidewalks that contains a granite Veterans' Memorial near the courthouse at the northeast corner of the park. A stage is located on the right side between the circular area and a parking lot with marked parking spaces, with stairs surrounding the front half of the stage and a smaller staircase at the rear. The plan also shows surrounding pedestrian pathways, tree-lined edges, and parking spaces along College Street running parallel to the sidewalk and park walkway, bounded by College Street, Spruce Street, and Court Plaza near City Hall and the Buncombe County Courthouse.

Pack Square Park - Reuter Terrace

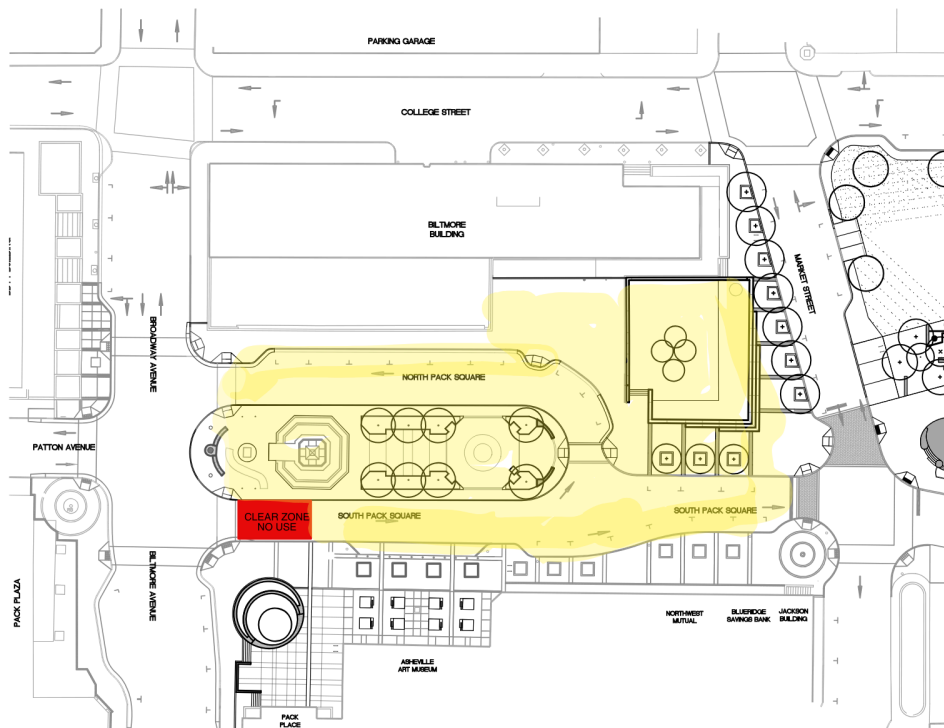


Pack Square Park
Reuter Terrace / Founder's Walk

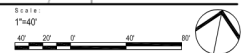


Scaled site plan for Pack Square Park showing the Reuter Terrace located between Market Street and Spruce Street, and between College Street and Court Plaza, used for event layout and planning. Users should note that reservations of Reuter Terrace are limited to the southern half of this section of the park unless the full park is reserved for a single purpose.

Pack Square Park - Pack Square

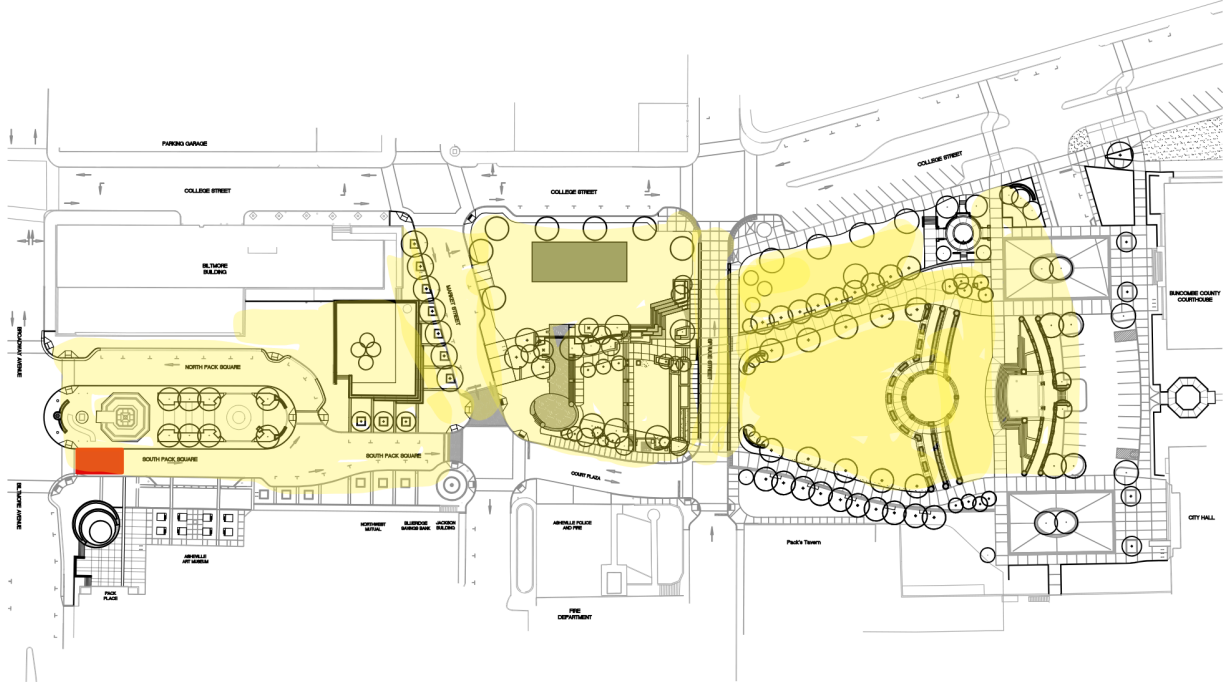


Pack Square Park
Pack Square



Scaled site plan for Pack Square and Raised Lawn in Pack Square Park showing the boundary internal streets of North Pack Square, South Pack Square, and boundary streets including Biltmore Avenue to the west, College Street to the north, and Market Street to the east, used for event layout and planning.

Pack Square Park - Full Site Map

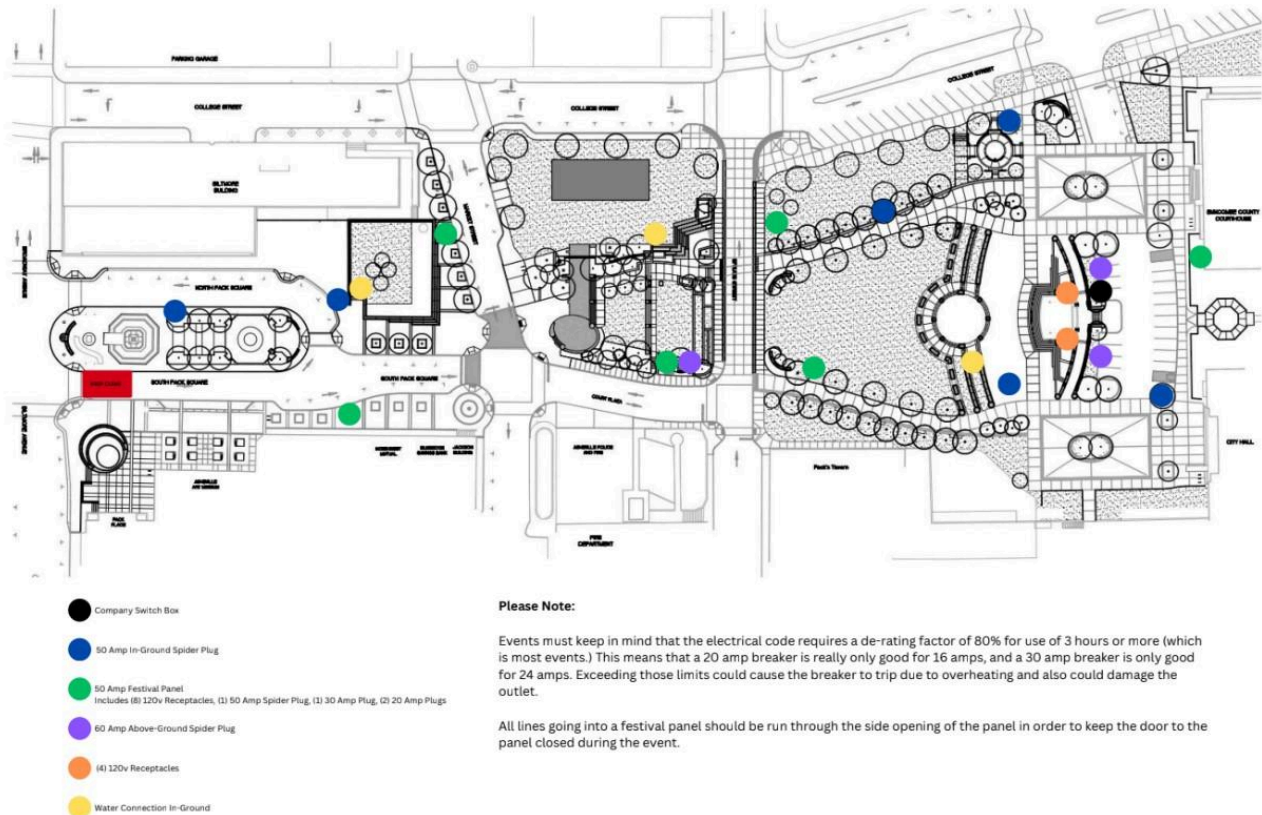


Pack Square Park

Site map of Pack Square Park showing the full park layout, including Reuter Terrace, Roger McGuire Green, and adjacent open spaces used for event planning and public use.

Pack Square Park Electrical & Water Layout

Site plan of Pack Square Park showing locations of electrical and water utility connections across Reuter Terrace, Roger McGuire Green, and surrounding civic areas.



This image is a detailed site plan of Pack Square Park illustrating the distribution of electrical and water utility connections for event use. The map includes Reuter Terrace on the left, Roger McGuire Green in the center, and the area surrounding City Hall and the Buncombe County Courthouse on the right. Pathways, lawns, plazas, and adjacent streets are labeled.

Utility locations are identified using colored dots throughout the map. For example, a yellow dot represents an in-ground water connection, a green dot represents a 50-amp festival panel, a blue dot represents a 50-amp in-ground spider plug, a purple dot represents a 60-amp above-ground spider plug, an orange dot represents a 120-volt receptacle, and a black dot represents a company switch box.

On the left side near Reuter Terrace and the oval fountain, a blue dot representing a 50-amp in-ground spider plug is located along the plaza edge. Nearby, yellow dots representing water connections and green dots representing festival panels are positioned along the walkway leading toward the central park. Additional utility points appear along this corridor, which connects to the main lawn.

At the center of the park, Roger McGuire Green is bordered by multiple green dots representing festival panels and yellow dots representing water connections placed along the surrounding walking paths. A yellow dot representing a water connection is positioned near the stage area, with additional connections spaced at intervals to support event setups.

In the central walkway between the green and the eastern plaza, clusters of utility connections are located at key intersections, including green dots representing festival panels and purple dots representing above-ground spider plugs.

On the right side near City Hall and the Buncombe County Courthouse, the highest concentration of utilities is present. Several black dots representing company switch boxes and purple dots representing above-ground spider plugs are grouped near building edges and plaza areas. Blue dots representing in-ground spider plugs and orange dots representing 120-volt receptacles are distributed along curved pathways and seating zones. Additional green dots representing festival panels and yellow dots representing water connections are positioned along outer paths and gathering spaces.

A note on the map states that electrical use must be derated by 80 percent for events lasting more than 3 hours. For example, a 20-amp breaker supports up to 16 amps, and a 30-amp breaker supports up to 24 amps. It also instructs that all cables entering festival panels should be routed through side openings so that panel doors remain closed during operation.

