



University of  
Sheffield

Centre for  
Engineering  
Education



**Conference Details**  
**Practical Engineering Education 2024 (PEE24)**  
**2 – 3 July 2024**

A conference to explore the learning that happens when students get hands-on in workshops and laboratories.

**Venue Details:**

The Diamond  
32 Leavygreave Road  
Sheffield  
S3 7RD  
Telephone Number: 0114 222 9134  
[Website](#) and [Map](#)

**Programme / Conference Details**

Day one and two [programme details](#).

Please refer to the floorplans at the end of this document to see the locations of each session.

**Keynote Speakers**

Professor Claire Lucas from King's College London, who will be revolutionising engineering pedagogy.

Dr Brett A. Becker from University College Dublin, who will explore the transformative potential of generative AI in engineering education.

More details on both our keynotes can be found [here](#).

**Conference Theme**

***“Enhancing student experience and/or inclusivity of practical learning”***

During the PEE21 and PEE22 conferences, an emergent theme from many of the delegates was the mechanics for delivering practical teaching remotely during the COVID-19 restrictions. We would love to hear how practitioners have applied learning from this period to shape the future of their practice to embed practical skills effectively to enhance students' experience.

## Sponsors

The following companies are exhibiting and/or sponsoring the event:

- Didactic Services Ltd
- Gunt Technology
- TecQuipment
- Matrix TSL
- Shimadzu
- Armfield
- Quanser

More [sponsor information](#) can be found on our website.

## Registration Details

Please report to the ground floor reception desk of The Diamond where you will be directed to the registration area to be checked in which will be on the first floor.

## Gala Dinner

On the evening of the 2 July at 7pm there will be a Gala Dinner at our [INOX Dine Restaurant](#), Level 5, Students' Union Building Durham Road, Sheffield S10 2TG.

The dress code is casual.

**PLEASE NOTE - if you have bought a student ticket, this is not included in your conference package.**

## Key Conference Contacts

General email address - [pee@sheffield.ac.uk](mailto:pee@sheffield.ac.uk)

Chalak Omar, PEE24 University of Sheffield Conference Lead - [c.omar@sheffield.ac.uk](mailto:c.omar@sheffield.ac.uk) 0114 222 6172

Emma kenny-Levick, Conference Coordinator - [e.l.kenny-levick@sheffield.ac.uk](mailto:e.l.kenny-levick@sheffield.ac.uk) 0114 222 042

Joy Mukherjee, PEE24 University of Sheffield Sponsor Coordinator - [j.mukherjee@sheffield.ac.uk](mailto:j.mukherjee@sheffield.ac.uk) 07927461519

## Health and Safety

If you are feeling unwell or displaying COVID-related symptoms, please do not attend the conference.

If you hear the fire alarm, please evacuate the building and gather at the following locations:

- [St George's Church](#), St George's Terrace, Sheffield, S1 4DP

A member of staff will be on-hand to assist you in the event of an evacuation.

[Access and Evacuation Information](#)

## WiFi Access

If you have institutional access to eduroam, this is available throughout the building. Guests and visitors can use the WifiGuest network. Select WifiGuest from the list of available wireless networks and sign in or log into The Cloud using your web browser. More information can be found by clicking on the [Guest WiFi](#) link.

## Poster Presenters

The posters will be presented on 46" LCD screens (W x H: 110cm x 65cm). Please bring your poster on a USB stick or laptop in landscape format.

## Getting Here

Sheffield is a very pedestrian-friendly city, and you'll find the train station, most hotels, and the conference locations are all within walking distance of each other. Walking is a good way to travel across Sheffield and explore the city. Whether you want to get from your hotel or the train station to the main campus – everything is on your doorstep and within a 30-minute walk of each other.

More details of all the travel choices available to you can be found on our [Getting Here](#) web page.

## Taxis

Sheffield has several taxi stands throughout the city; there is a taxi stand at the front entrance of the train station and many other places in the city centre. Taxis can also be reserved with [City Taxi Sheffield](#) (+44 114 239 3939) or another taxi company.

## Car Parking

There are a few options for parking near Sheffield Hallam University, e.g. [Britannia Parking](#), [Hartshead Square NCP](#), [Furnival Gate NCP](#) and the [APCOA car park on Eyre Street](#).

There are a few options for parking near the Diamond Building, e.g. [Q-Park Rockingham Street](#), [Q-Park, Durham Rd](#) or the [NCP Solly Street](#).

## Accommodation

There are plenty of places to stay in Sheffield and for your convenience, we have created a [list of hotels](#) that you may want to choose for your stay whilst at the conference.

## Visitor Information

From the largest theatre complex outside of London to the largest urban indoor gardens in Europe, there is plenty to see in Sheffield when you come for a visit. Check out our [Visit Sheffield](#) page for more details.

**Thank you for registering for PEE24**

**If you have any questions, please email:**

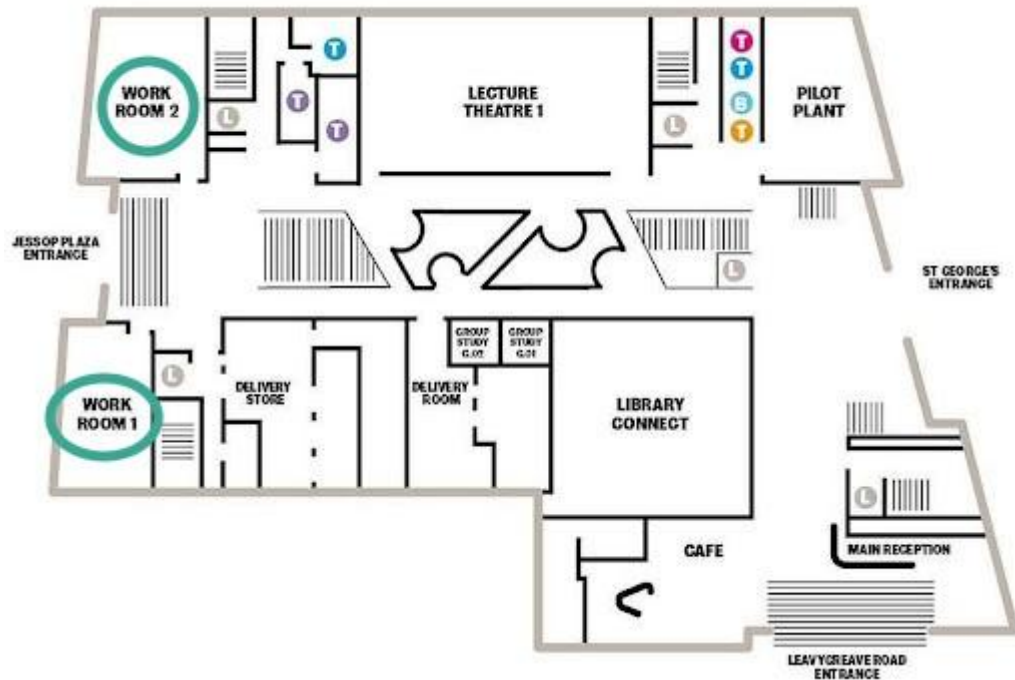
[pee@sheffield.ac.uk](mailto:pee@sheffield.ac.uk)

# Conference Room Locations

## Diamond Basement:



## Diamond Ground Floor:



## Diamond First Floor:

