
Mini Snake Mitts

Error

-graph has an increase in the ribbing it's not supposed to be there. added fixed chart on the last page. It's a bit less detailed so leaving my errored chart

-my tongue frays added hints on how to stop

- [adding this link to help with knit to purl gapping](#)

Materials

-4.5 dp knitting needles (i used 5. 1 for cabling and 4 knitting)

-Cabling needle (if not using a dp needle like i am)

-Worsted weight Yarn (Main color 35 grams, scrap of red for otp. tongue)

-Yarn needle/scissors/knitting markers

Stitches Used

Knit - Purl

Increase Knit

I use - KLL (KRL would work 2)

Cable stitches



2/2 RPC, - sl 2 sts onto cn, hold in back, k2, p2 from cn



2/2 LPC - sl 2 sts onto cn, hold in front, p2, k2 from cn

1/1 FCP

1/1 BCP

Pattern

- Cast on 32 (on needles 16, 8, 8)
- K2, P2 ribbing 10 rows
- Start Working the chart on one half of the stitches and just plain knit on the other half

Chart

-At 16 inc 1st stitch of chart (or last)) place marker between stitches one on the outside of the main area is the.

-Same inc on same side of glove for knit side (hope it makes sense)

-Row 25 of chart, work till at Thumb stitches and place all 10 onto a stitch holder or random yarn piece for for later

Ribbing

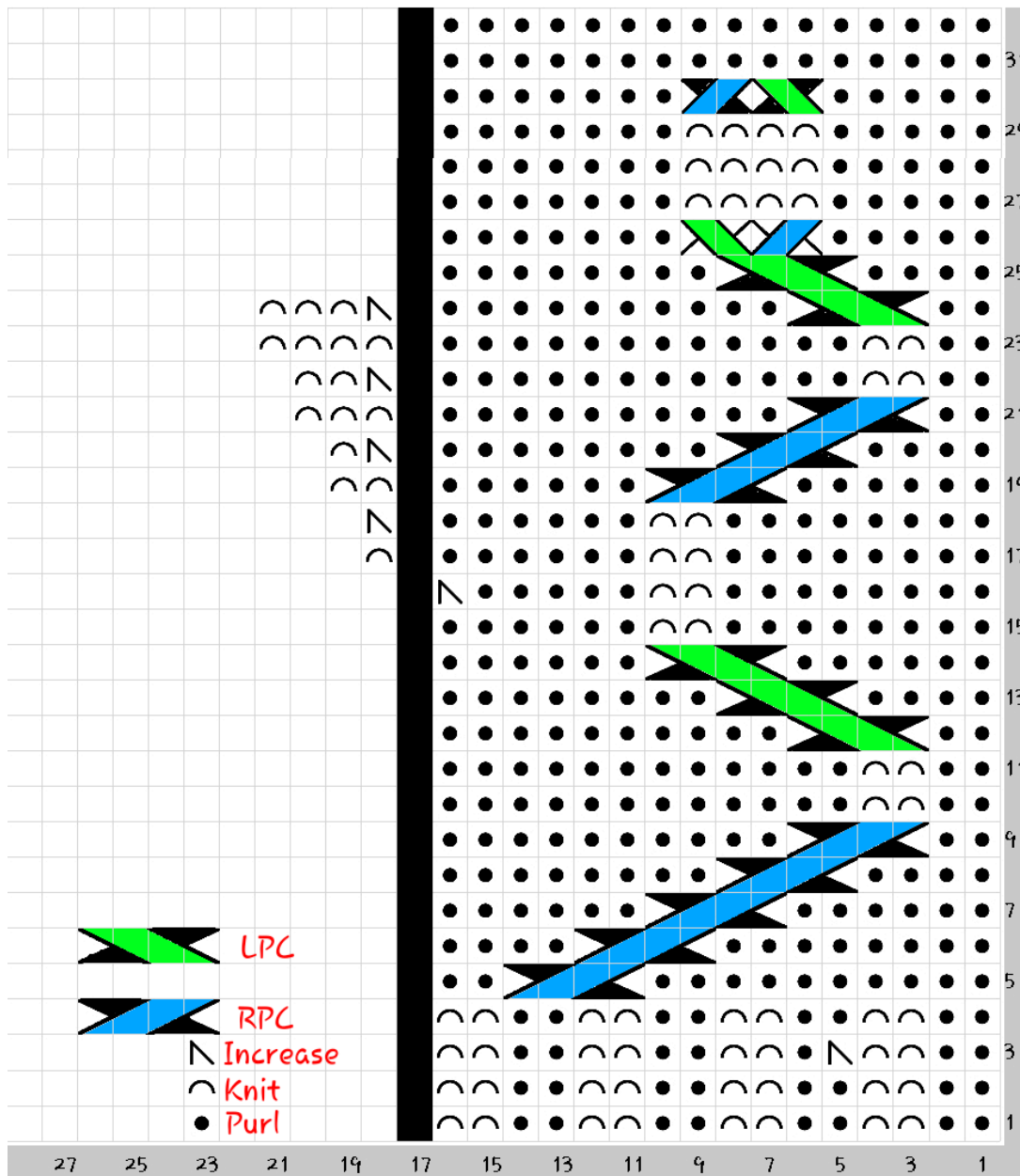
After finished the chart work 4 rows of k2, p2 ribbing

- 1
- 2
- 3
- 4

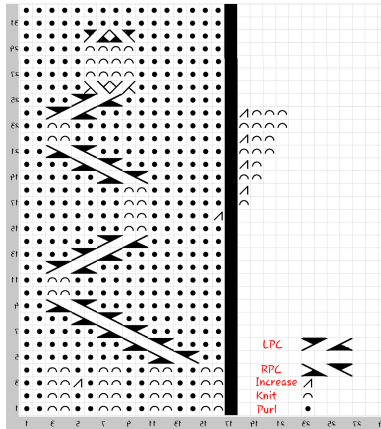
Cast off

Graph

Glove 1



Glove 2



(i just flipped the original graph so some of the stuff is off... will remove colors))

Thumb

Pick up 5 stitches of the stitches on holder + 2 from body of for each needle

Knit 1 row.

K1, P1 for 4 rows

Cast off

FINISHING

Make a 2nd glove with the charted part on the opposite side you made it on. (Meaning if you did it on the first 16 stitches do it on the last 16) flip graph so finger is on other side i am not 100% sure how to explain it i just did it.

Weave all yarn tails into place

Take a small piece of red yarn (or desired color) and knot it onto the top of the last cable stitches.

-stop the tongue yarn from fraying by

*applying fabric glue to the tips of the tongue.

* knotting the end of the yarn.

* Melting? (This may add an unsightly black clump try the other methods 1st, this only works with acrylic yarns)

^ ideas courtesy of [lion brand](#) yarn

Add eyes if you want

