

CENTER FOR ECOLOGY & NATURAL
RESOURCE SUSTAINABILITY



SITE 7

Smith/Geiger Property

Franklin Township
Portage County, OH

*Report Written By: Stephanie Deibel
Date of Site Visit: 29 September; 06 October 2012
Date Finalized: 18 December 2012*

TABLE OF CONTENTS

SECTION 1: NARRATIVE DESCRIPTION OF PROPERTY	3-4
SECTION 2: SOILS INFORMATION	5
SECTION 3: SOILS MAP	6
SECTION 4: PROPERTY INVENTORY	7-8
SECTION 5: LIST OF PHOTO POINTS	9
SECTION 6: MAP OF PHOTO POINTS	10
SECTION 7: PHOTO POINT COORDINATES	11
SECTION 8: PHOTO POINT PHOTOS	12-26

APPENDICES

Appendix A: Maps

Aerial View

Topography

SECTION 1: NARRATIVE DESCRIPTION OF PROPERTY

Introduction

Stephanie Deibel, conservation undergraduate student visited the Smith/Geiger property to establish a baseline documentation report of the property. During the visit, I walked the entire property and took photos at the property corners and at other significant locations.

Surrounding Land Use

The Smith/Geiger property is approximately 116 acres and is located north of Summit Rd in Franklin Township in Portage County, OH. The property is within the Cuyahoga watershed. The property is bordered by Summit Rd on the southern property line. Hodgeman Ln runs along the western property line. The eastern and northern property line is adjacent to wetland areas similar to those that are found on our property. The northern property line also runs along with Breakneck Creek.

Land Cover and Habitats

Mixed Hardwood Forest

The southwest corner of the property, near Hodgeman Ln, is an uneven-aged, mixed hardwood forest with dense, diverse understory growth consisting of shrubs. Trees have DBH ranging from 8"-16" classifying this area as Mid-Successional. Mature trees with DBH greater than 16" can be found throughout this area. Various Oaks and Maples were observed while in the area.

Other small hardwood forest stands are scattered throughout the property, mostly in wet areas.

Wetland

A vast majority of this property consists of wetlands. The property is dominated by cattail marsh, noted at photo point S7-06, S7-08, and S7-17, and swamp forest. Open water wetland habitat is prominent in the upper northeastern corner. The water in this area gets deeper than waist depth at times.

Open-Field

Open field land cover makes up the rest of the site.

Photo point S7-13, S7-14, S7-15, S7-16, and S7-18 denote areas of heavy golden rod growth, which is the dominant plant in all the open field habitat types. Grasshoppers were abundant in all the open field habitats.

Creek

Numerous creeks can be found throughout the property. Near the northeast corner is a channelized stream that runs between the stadium field areas and the open water wetlands. On the western side of the property, a creek runs parallel to the western border, running under the portage hike and bike trail. Another small creek can be found in the cattail marsh area near photo point S7-04. There is a ditch along the western border with some sort of concrete underpass that runs under Hodgeman Ln that empties in a sandy bottomed stream. This stream seems to be connected to the stream running under the portage hike and bike trail at photo point S7-02 and S7-03.

Land Cover Summary

Land Cover Type	Description
Mixed Hardwood Forest	7 acres
Wetland	24 acres
Open-field	4 acres
Creek	1,169 meters

Note: The above descriptions are estimated values calculated from an aerial map of the area. The values are in no way exact measures of these land cover types.

Summary of Conservation Values

SITE 7 has significant educational, research, and natural conservation values. A large portion of the property is wetland habitat, allowing for watershed and water quality research and awareness.

Site History

2 Parcels:

17-002-00-00-007-000

17-017-00-00-006-000

Transaction:

Sale Date	Seller	Buyer	Sale Price
7/11/2002	Unknown	Kent State University Board of Trustees	\$0.00

SECTION 2: SOILS INFORMATION

MAP UNIT	SOIL SERIES	SOIL TEXTURE	DRAINAGE CLASS	EROSION RATING	SLOPE
BgA	<i>Bogart</i>	<i>Silt Loam</i>	<i>Moderately Well</i>	<i>Slight</i>	<i>0-2%</i>
BgB	<i>Bogart</i>	<i>Silt Loam</i>	<i>Moderately Well</i>	<i>Slight</i>	<i>2-6%</i>
Cg	<i>Carlisle</i>	<i>Muck</i>	<i>Very Poor</i>	<i>Slight</i>	<i>0-2%</i>
CnB	<i>Chili</i>	<i>Loam</i>	<i>Well Drained</i>	<i>Slight</i>	<i>2-6%</i>
CpB	<i>Chili</i>	<i>Silt Loam</i>	<i>Well Drained</i>	<i>Slight</i>	<i>2-6%</i>
FcA	<i>Fitchville</i>	<i>Silt Loam</i>	<i>Somewhat Poorly</i>	<i>Slight</i>	<i>0-2%</i>
FcB	<i>Fitchville</i>	<i>Silt Loam</i>	<i>Somewhat Poorly</i>	<i>Slight</i>	<i>2-6%</i>
JtA	<i>Jimtown</i>	<i>Loam</i>	<i>Somewhat Poorly</i>	<i>Slight</i>	<i>0-2%</i>
LaB	<i>Lakin</i>	<i>Loamy Sand</i>	<i>Well Drained</i>	<i>Slight</i>	<i>2-6%</i>
LaC	<i>Lakin</i>	<i>Loamy Sand</i>	<i>Well Drained</i>	<i>Slight</i>	<i>6-12%</i>
MgA	<i>Mahoning</i>	<i>Silt Loam</i>	<i>Somewhat Poorly</i>	<i>Slight</i>	<i>0-2%</i>
MgB	<i>Mahoning</i>	<i>Silt Loam</i>	<i>Somewhat Poorly</i>	<i>Slight</i>	<i>2-6%</i>
OsB	<i>Osthemo</i>	<i>Sandy Loam</i>	<i>Well Drained</i>	<i>Slight</i>	<i>2-6%</i>
OsC	<i>Osthemo</i>	<i>Sandy Loam</i>	<i>Well Drained</i>	<i>Slight</i>	<i>6-12%</i>
Sb	<i>Sebring</i>	<i>Silt Loam</i>	<i>Poorly Drained</i>	<i>Slight</i>	<i>0-2%</i>

This information was gathered from the Web Soil Survey, provided by the USDA NRCS and the Soil Survey of Portage County, provided by the USDA SCS in cooperation with NRCS.

SECTION 3: SOILS MAP



SECTION 4: PROPERTY INVENTORY

4.1 Structures, Improvements, and/or Noted Features

- A Stream – Photo Point S7-02 – runs beneath the portage hike and bike trail bridge near photo point S7-01. The southern portion had very slow moving water at time of visit. The substrate consisted of much and leaf litter. Good riparian development with growth extending over the water. The northern portion has a small riffle area near the drainage outlet, with cobble size rocks. Riparian growth of small trees and shrubs extends over the water. When looking north, the east side of the stream has tree growth ranging from 12-20” DBH. The west side consists of old field growth, dominated by goldenrod.
- An Open Area – Photo Point S7-03 – is a monoculture of what appears to be reed canary grass. The area is surrounded by shrub growth. To the west is Hodgeman Ln.
- A Small Creek – Photo Point S7-04 – runs through a cattail marsh, located near photo point S7-03. The water is mucky with no visible substrate bottom.
- A Stream – Photo Point S7-05 – with a sandy bottom and some gravel flows west to east. The western end flows under a concrete underpass that connects it to the adjacent roadside ditch on the opposite side of Hodgeman Ln. Grass plant, possibly reed canary, is growing on the banks with small trees on either side of the stream. A frog was spotted at time of visit. Small animal tracks, most likely raccoon, were seen as well.
- A Cattail Marsh – Photo Point S7-06 – is surrounded by shrubs and a few trees. Some grass and goldenrod are present near the road. Tons of grasshoppers were observed at time of visit.
- Northwest corner – Photo Point S7-07 – is near another cattail marsh. Large trees border on the northern side of the marsh. Small shrubs with sporadic tree growth on the southern side. A large blue pipe, candy cane shaped, and a fire hydrant are located near the point.
- A Pooling Area- Photo Point S7-08 – has young cattail growth and possibly reed canary grass. Oil like bacteria was present at time of visit. Shrub growth surrounds the pooling area on the northern and southern sides. The depth is no deeper than a few feet. Macrophytes are currently growing in the water. Frogs and grasshoppers were observed at time of visit.
- A Smaller Pooling Area – Photo Point S7-09 – has a depth no greater than 6 inches. Grass plant, most likely reed canary, is dominant. Large trees with DBH of 32” and greater border the area.
- Photo Points S7-10 and S7-11 represent a creek that seems to be connected to the stream in photo point S7-02. Shrubs and few large trees make up the riparian area. The northern side of the banks is raised up approximately 3-5 feet. As you travel south through the creek some macrophyte growth is present in the water.
- A Metal Post – Photo Point S7-12 – may be remnants of an old fence/property line. A deer was spotted near this point. Skunk cabbage was present at time of visit.
- A Field Area- Photo Point S7-13 and S7-14 – is dominated by goldenrod growth. The two areas are separated by a small wooded area. Some small shrubs are scattered throughout the field area. Grasshoppers were abundant at time of visit.
- Photo Point S7-15 is part of the creek in photo point S7-05. This portion of the creek has multiple sand riffles with numerous bends. Small fish were seen at time of visit.
- Photo Point S7-16 represents an old field area, dominated by goldenrod, sits above a valley. Grasshoppers were abundant at time of visit.

- A Cattail Marsh – Photo Point S7-17 – with some shrubs has two large willow trees in the surrounding area.
- A Small Field – Photo Point S7-18 – is dominated with dominated growth. To the north, a path has been created by a vehicle. The northwest of the field is a cattail marsh. Behind the field is an access point to the wetland area.
- A Pooling Area – Photo Point S7-20 – is off of the wetland area mentioned above. It extends behind the field hockey field. Shrub growth along the southern edge near the mowed grass.
- A Ditch – Photo Point S7-22 – has some small cobble substrate with algae growth. Some cattails and small grass plants make up the plant community. Water was present at the time of visit.
- A Bridge – Photo Point S7-23 – made from an old skid crosses over the ditch mentioned above, photo point S7-22.
- Photo Point S7-24 represents the end of the ditch at photo point S7-22. The ditch splits into a small stream running east and west. Muck makes up the stream bottom. Raccoon prints were observed at time of visit. Large tree growth makes up the riparian area.

-

4.2 Access Roads and Trails/Parking

- Portage Hike and Bike Trail – Photo Point S7-01 – begins at this point. It runs towards to western side of the property where it crosses over 261, connecting SITE 7 with the Battaglia property.
- Access to the wetland – Photo Point S7-18 - can be accessed from the Dix Stadium parking lot.

4.3 Dumps, Disturbances, or Environmental Hazards

- No signs of the above were seen while inventorying the site.

4.4 Encroachments/Trespassing

- No signs of encroachment or trespassing were seen while inventorying the site.

SECTION 5: LIST OF PHOTO POINTS

S7-01: *Portage Hike and Bike Trailhead*

S7-02: *Stream*

S7-03: *Open Area*

S7-04: *Small Creek*

S7-05: *Creek*

S7-06: *Cattail Marsh*

S7-07: *Corner*

S7-08: *Pooling Area*

S7-09: *Pooling Area*

S7-10: *Creek*

S7-11: *Creek continued*

S7-12: *Boundary*

S7-13: *Open Field*

S7-14: *Open Field*

S7-15: *Creek; S7-05*

S7-16: *Open Field*

S7-17: *Cattail Marsh*

S7-18: *Open Field*

S7-19: *Pooling Area*

S7-20: *Pooling Area*

S7-21: *Pooling Area*

S7-22: *Ditch*

S7-23: *Bridge*

S7-24: *End of Ditch*

S7-25: *Wetland*

S7-26: *Concrete Structure*

S7-27: *Stream*

S7-28: *Stream Continued*

S7-29: *Metal Fence*

S7-30: *Entry to Wetland*

S7-31: *Entry to Wetland*

SECTION 6: MAP OF PHOTO POINTS

SECTION 7: PHOTO POINT COORDINATES

Coordinate System: UTM UPS, NAD83, (meters)

Point Number	Latitude (°N)	Longitude (°W)	Elevation (ft)

GPS Points taken on XXXXX ; using a Garmin eTrex Legend HCx GPS

Note: The longitude and latitude values were determined by a GPS unit. It should be noted that there is a small amount of error inherent with GPS readings.

SECTION 8: PHOTO POINT PHOTOS

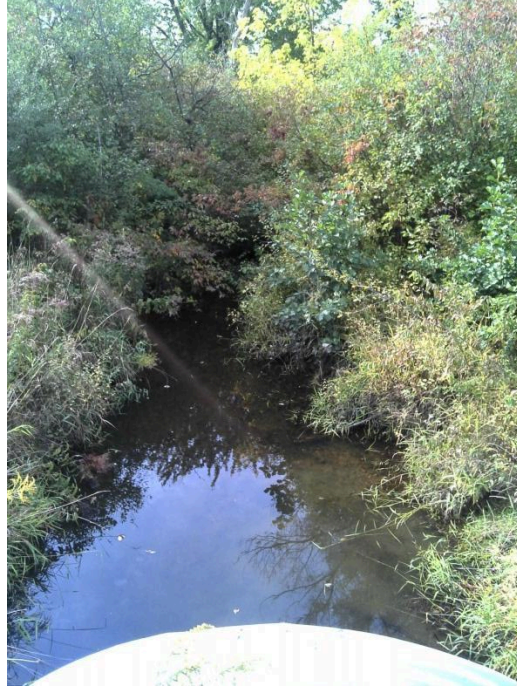
S7-01: *Portage Hike and Bike Trailhead*



S7-02: *Stream*



Looking North
S7-03: Open Area



Looking South



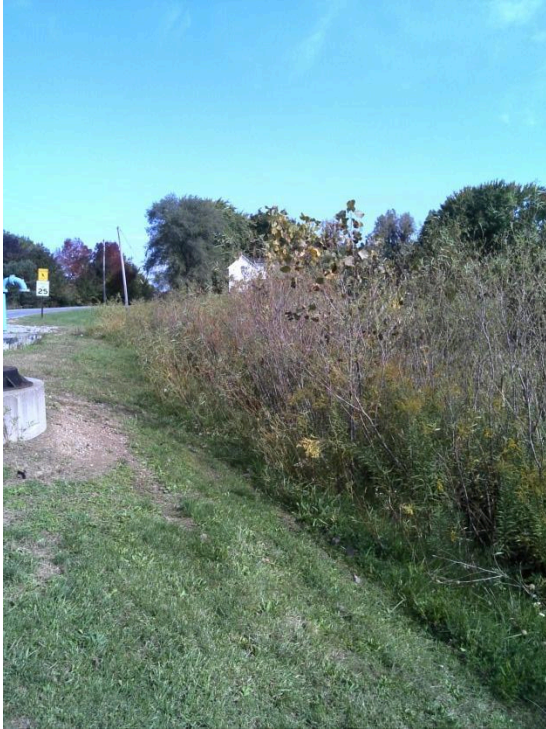
S7-04: Small Creek
S7-05: Creek



S7-06: *Cattail Marsh*



S7-07: *Corner*



S7-08: *Pooling Area*



S7-09: *Pooling Area*



S7-10: *Creek*



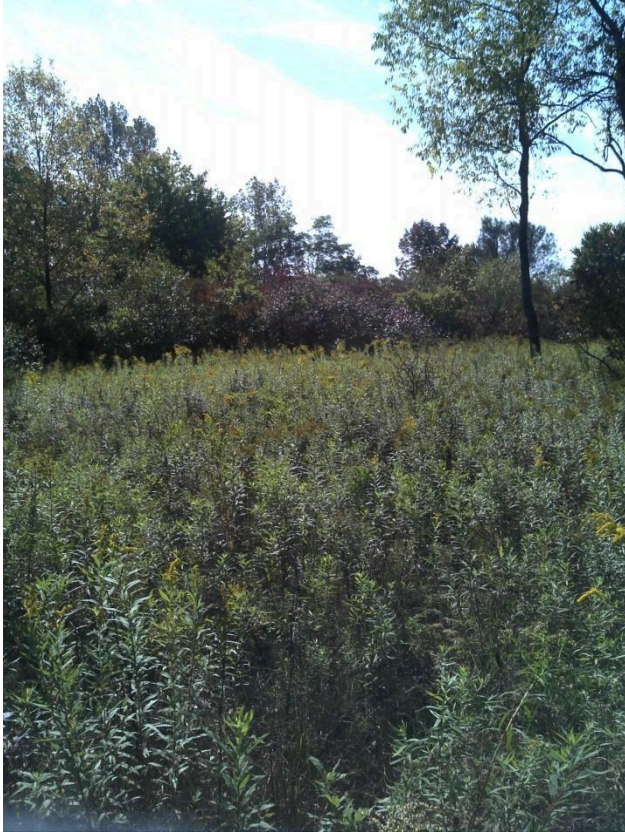
S7-11: *Creek continued*



S7-12: *Boundary*



S7-13: *Open Field*



S7-14: *Open Field*



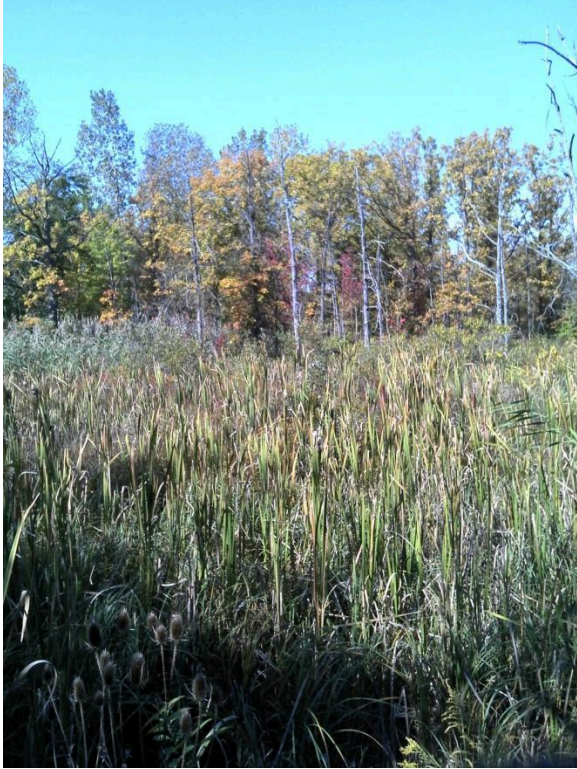
S7-15: *Creek; S7-05*



S7-16: *Open Field*



S7-17: *Cattail Marsh*



S7-18: *Open Field*



S7-19: *Pooling Area*



S7-20: *Pooling Area*



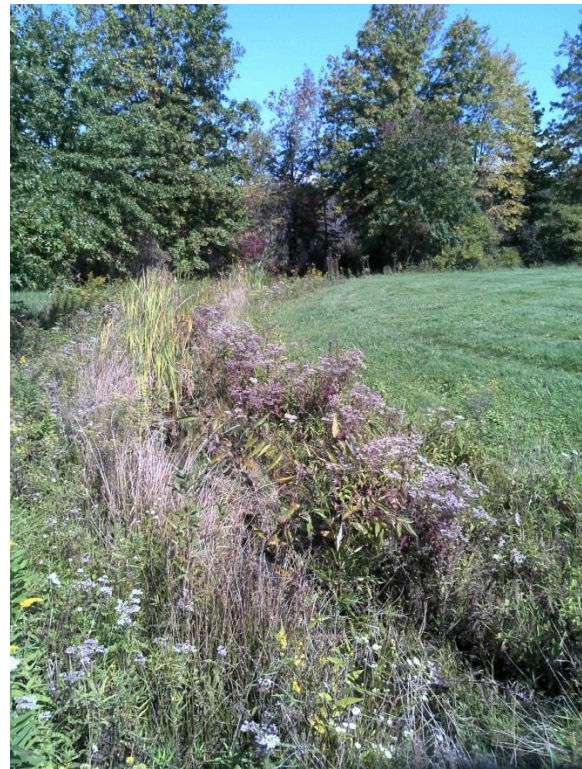
S7-21: Pooling Area



S7-22: Ditch



Looking South



Looking North

S7-23: *Bridge*



S7-24: *End of Ditch*

S7-25: *Wetland*



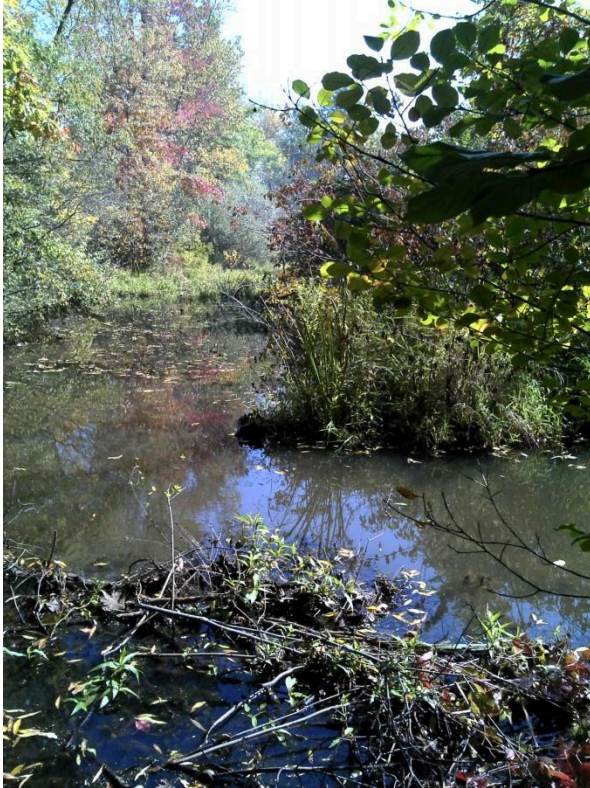
S7-26: *Concrete Structure*



S7-27: *Stream*



S7-28: *Stream Continued*



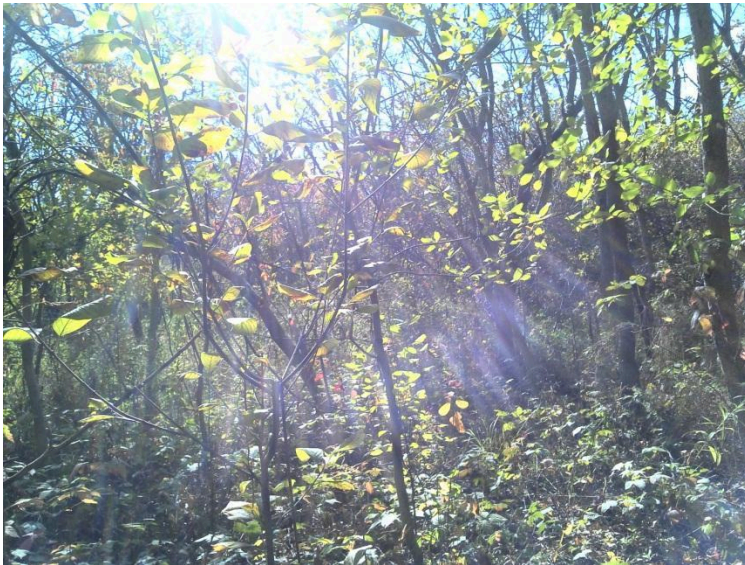
S7-29: *Metal Fence*



S7-30: *Entry to Wetland*



S7-31: *Entry to Wetland*



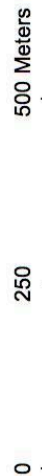
APPENDICES

APPENDIX A: MAPS





Image courtesy of USGS © 2012 Microsoft Corporation © 2010 NAVTEQ © AND



Topography Map

Kent State University
Center for Ecology & Natural Resource Sustainability

Image: 2/2012 (Bing)
Topography: Portage County Auditor (2ft)

