

Makeup Guide

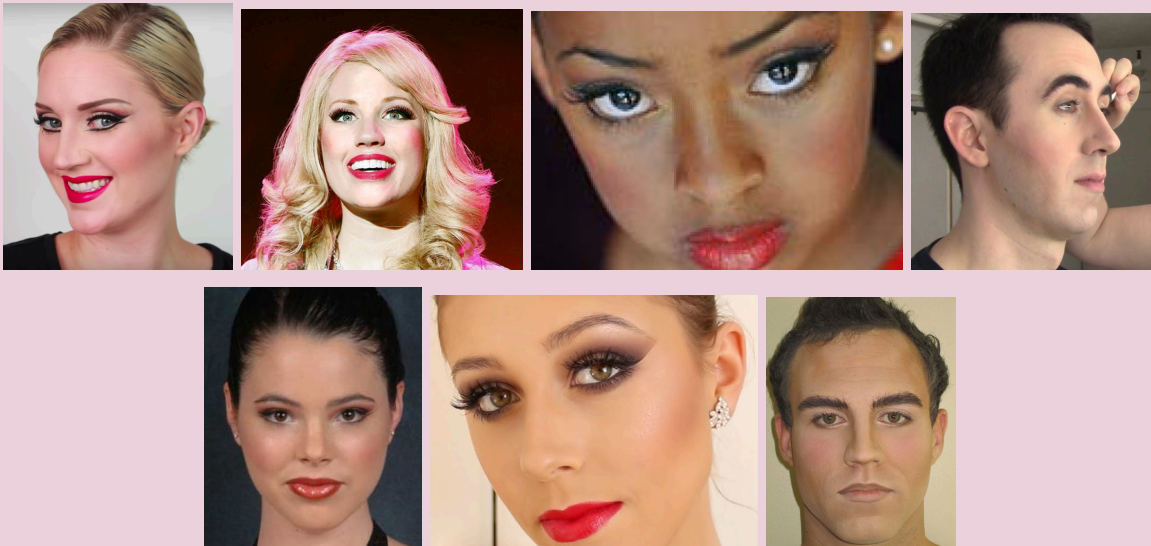
Unless otherwise specified, you will do your makeup at home before you arrive at school for the shows. The job of the hair and makeup crew is to put on finishing touches or help with touch-ups.

Everyone must bring their own makeup with them to dress rehearsals and shows.

All makeup must be in a Ziplock baggie, NOT in a makeup bag!

Label your baggie in permanent marker and store it in your assigned storage box.

Dollar Tree and Five Below are great options for buying makeup! Below is a list of makeup products that ALL cast members are expected to bring into school by the Friday before tech week (2/28).



There are loads of video tutorials online depicting typical stage makeup application. [Here is a link to one that may be helpful.](#) If you're not sure what to do when applying a product, use the internet as a resource and/or reach out to Ms. McGreevy (in room D3 or at cmcgreevy@mtps.us).

LIPS

LIPSTICK

(Female Characters)



- Please bring in a soft red or pink shade that works best for your character.



TINTED LIP BALM

(Male Characters)

- Any color or brand is okay.

EYES



EYEBROW PENCIL

(male and female characters)

- Make sure that the audience will be able to see your eyebrows and expressions from the back of the house!
- [Here is a link to a tutorial for filling in eyebrows.](#) There are lots of other tutorials available on Youtube.



MASCARA

(female characters only)

- Apply mascara before you put on any fake eyelashes.



EYELINER

(male and female characters)

- Eyeliner applied to the top and bottom of the eye



FALSE LASHES

(female characters only)

- False lashes will help to make your eyelashes and eyes pop!
- This will take practice! [Here is a link to a video tutorial for applying false lashes.](#)



CONCEALER

(male and female characters)

- Concealer can be used to reduce the appearance of under-eye circles.
- Select the shade that works best for your skin tone.



EYESHADOW

(female characters only)

- Select a shade that you like/compliments your eyes.

FACE

FOUNDATION

(male and female characters)

- Select the foundation that most closely matches your skin tone.
- It is extremely important that both male and female characters wear foundation on stage!



BLUSH

(male and female characters)

- The stage lights will make your skin very bright. Everyone needs to wear blush on their cheeks.
- Apply on the apples of your cheeks

OPTIONAL: BRONZER

- Bronzer can be applied to the hollows of your cheeks to accentuate your facial structure.



APPLICATORS

(male and female characters)

- No sharing. Everyone must have their own supplies.
- Make-up sponge (sometimes called a beauty blender)
- Eyeshadow applicators or Q-Tips



MAKEUP REMOVER

(male and female characters)

- You'll need makeup remover to correct any errors or accidents, and to get all of this stuff off your face ASAP after the show is over each night!

Hair Guide

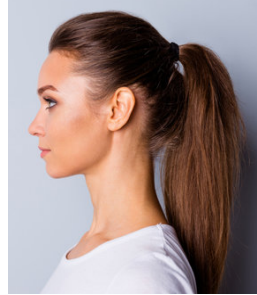
Unless otherwise specified, you will do your hair at home before you arrive at school for the shows. The job of the hair and makeup crew is to put on finishing touches or help with touch-ups.

HAIR

Everyone will need:

- Hairspray
- Bobby pins
- Hair ties

Hint: As long as your hair is not hanging in your face in a way that obstructs the audience's view of your facial expressions, you can wear your hair however you think your character would wear it.



HIGH PONYTAIL

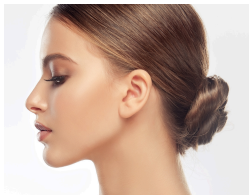
[Click here for high ponytail tutorial](#)

- For this look you'll need hair elastics, hairspray, and a comb



LOW PONYTAIL

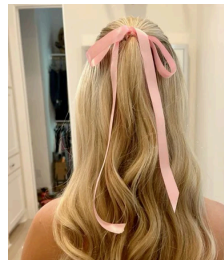
- For this look you'll need hair elastics, hairspray, and a comb



SLICKED BACK BUN

[Click here for slicked back bun tutorial](#)

- For this look you'll need hair elastics, hairspray, a comb, and bobbypins



HALF UP / HALF DOWN

[Click here for 1/2 / 1/2 tutorial](#)

- There are a lot of "fancier" tutorials online.
- Feel free to try something new and will work with your character

