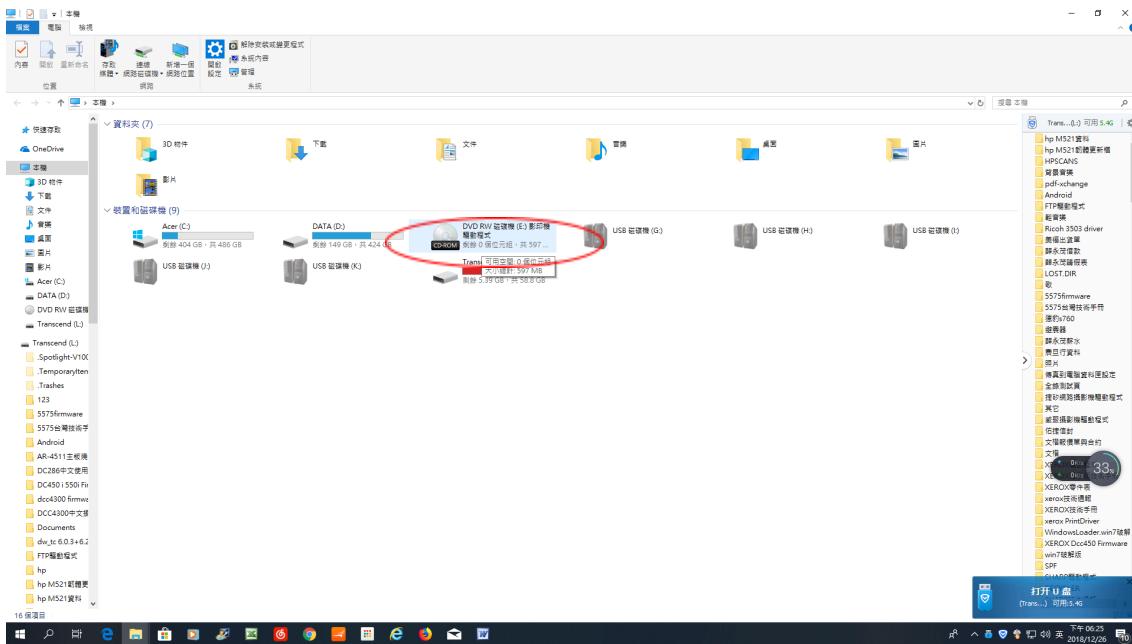
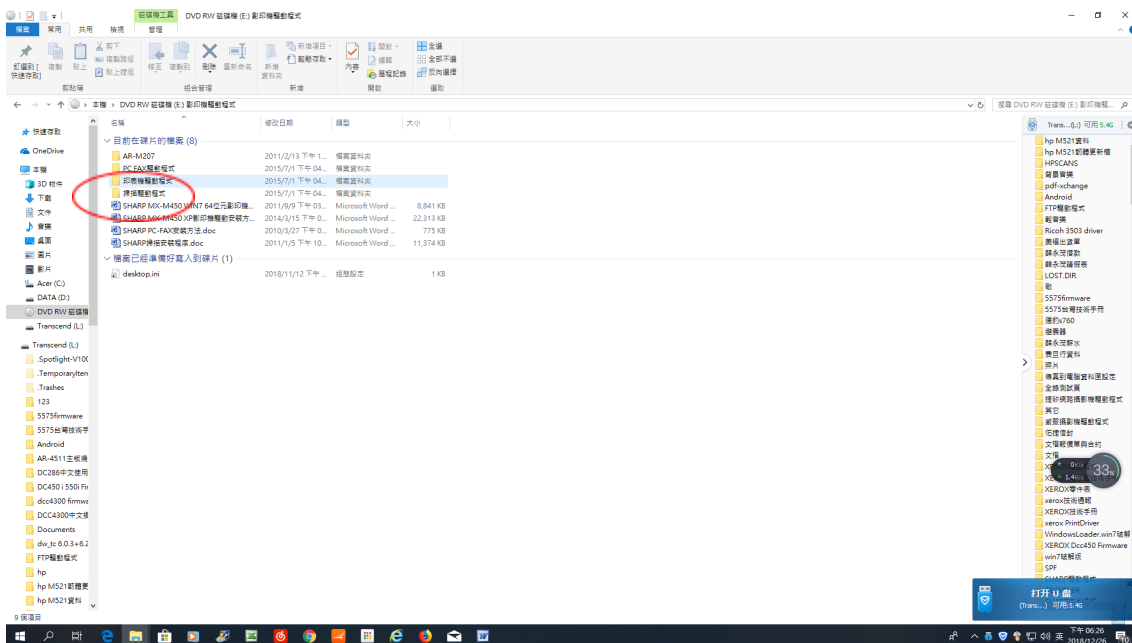


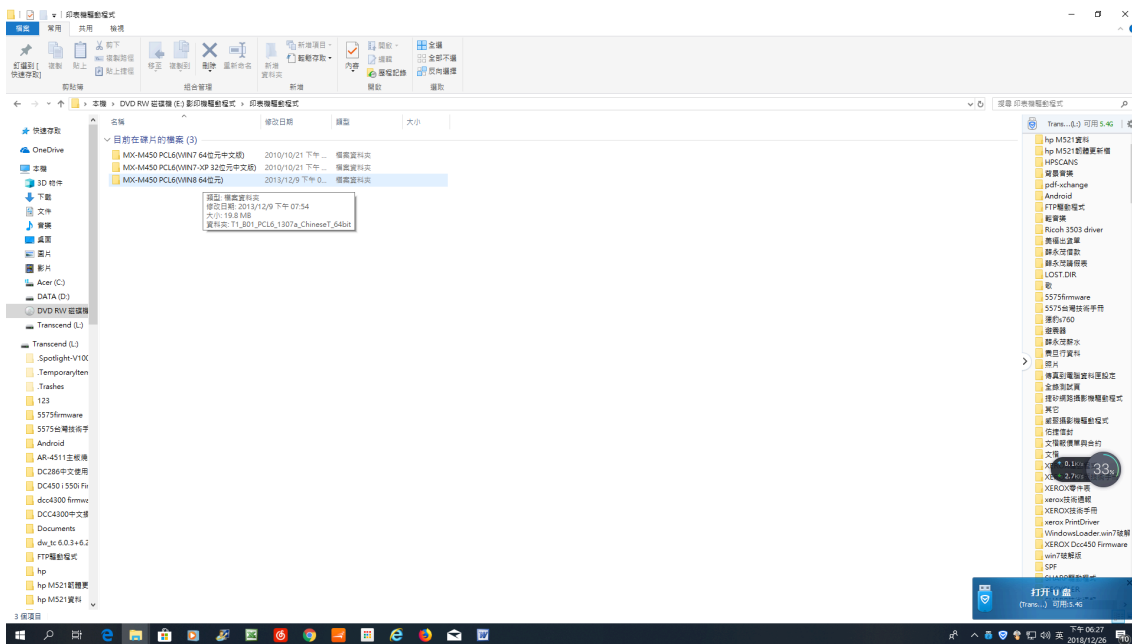
SHARP MX-M450 WIN10 64位元印表機 印表機安裝步驟如下:



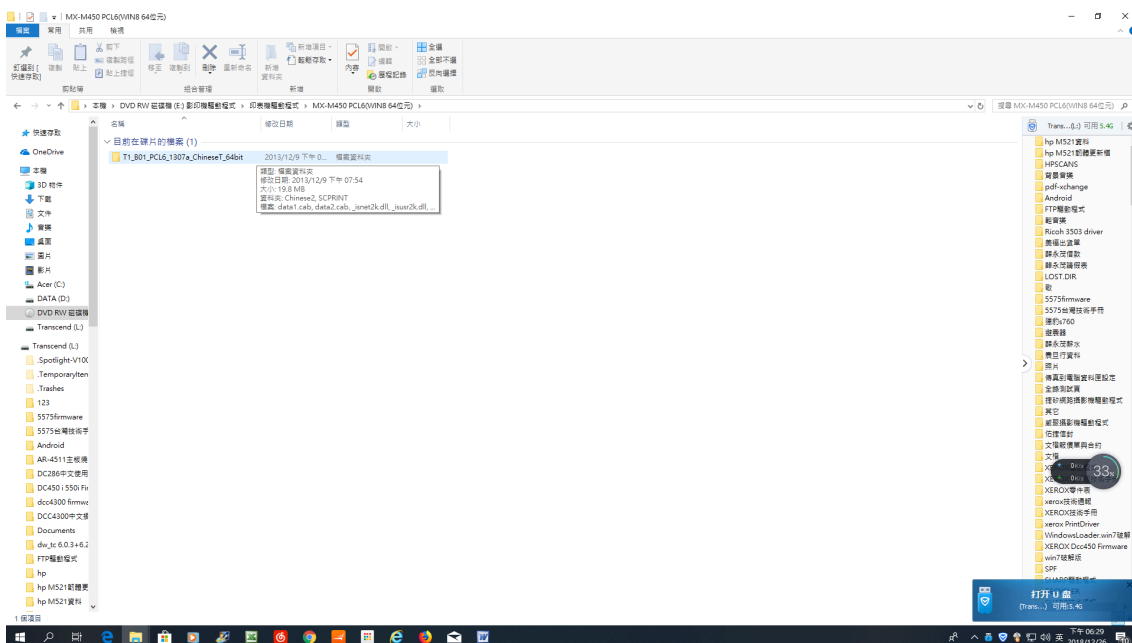
1.點兩下 光碟機



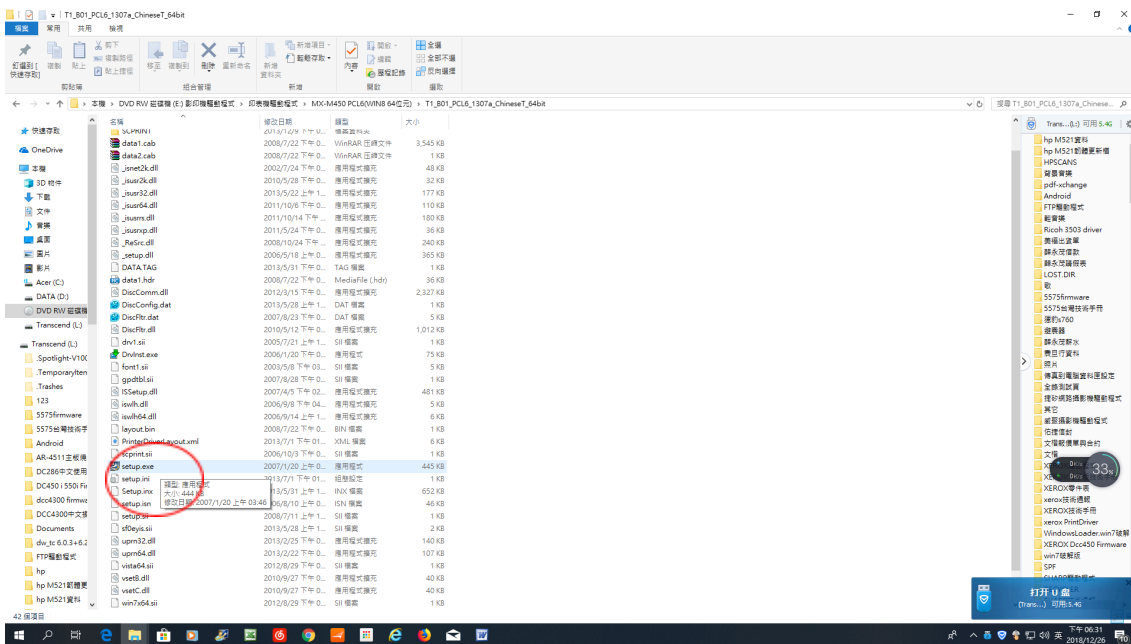
2.點兩下 印表機驅動程式



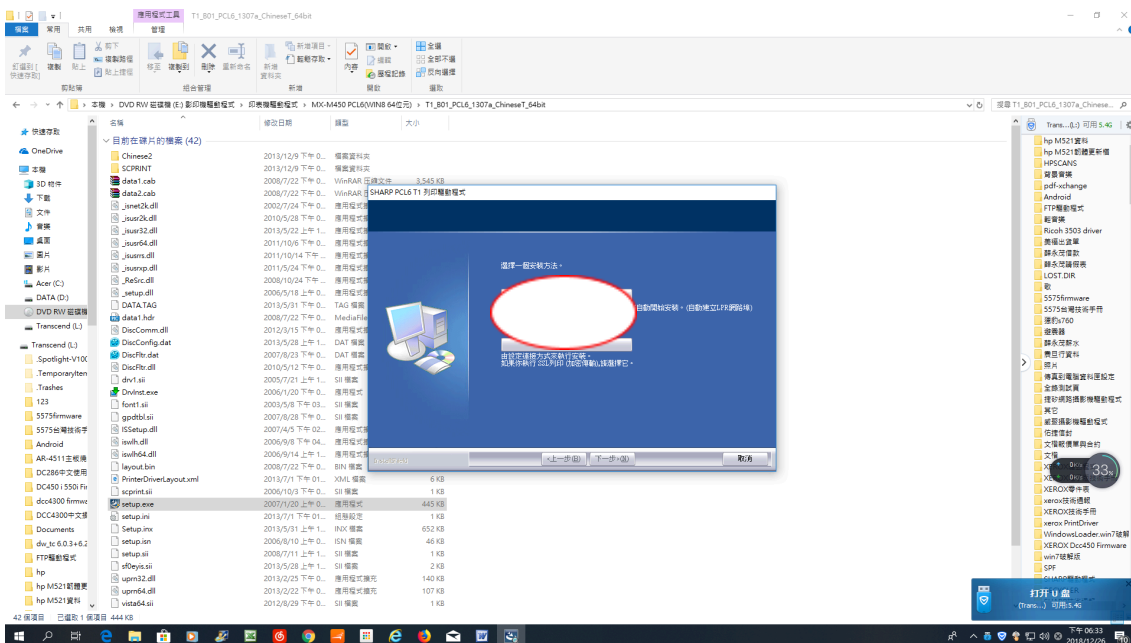
3.點兩下 MX-M450 PCL6(WIN10 64位元)



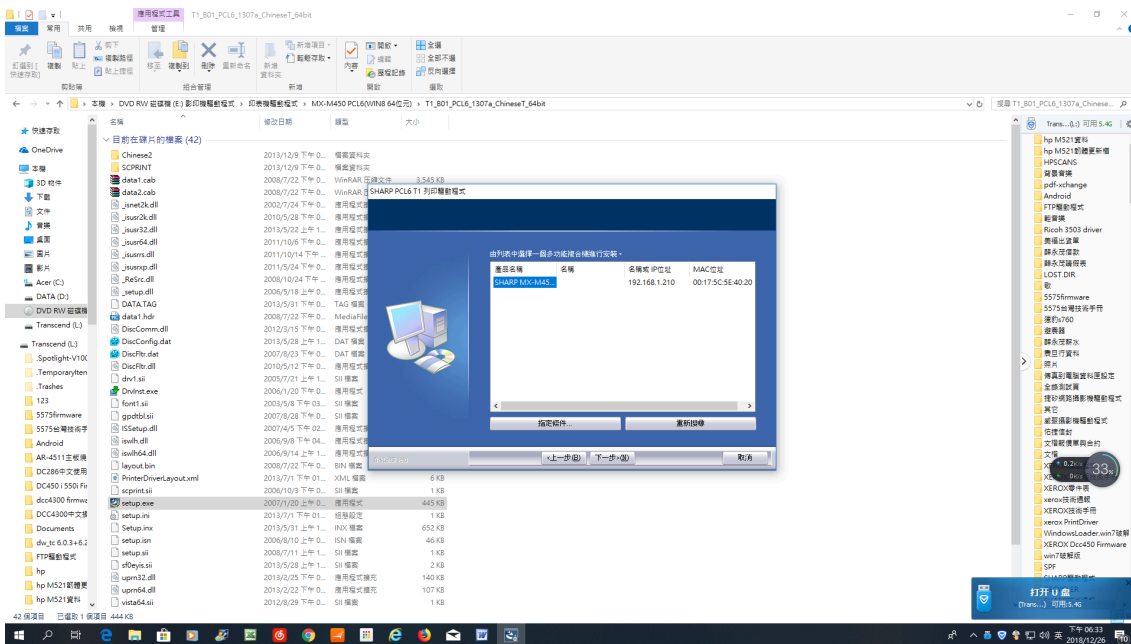
4.點兩下 T1_B01_PCL6_1307A_chineseT_64bit



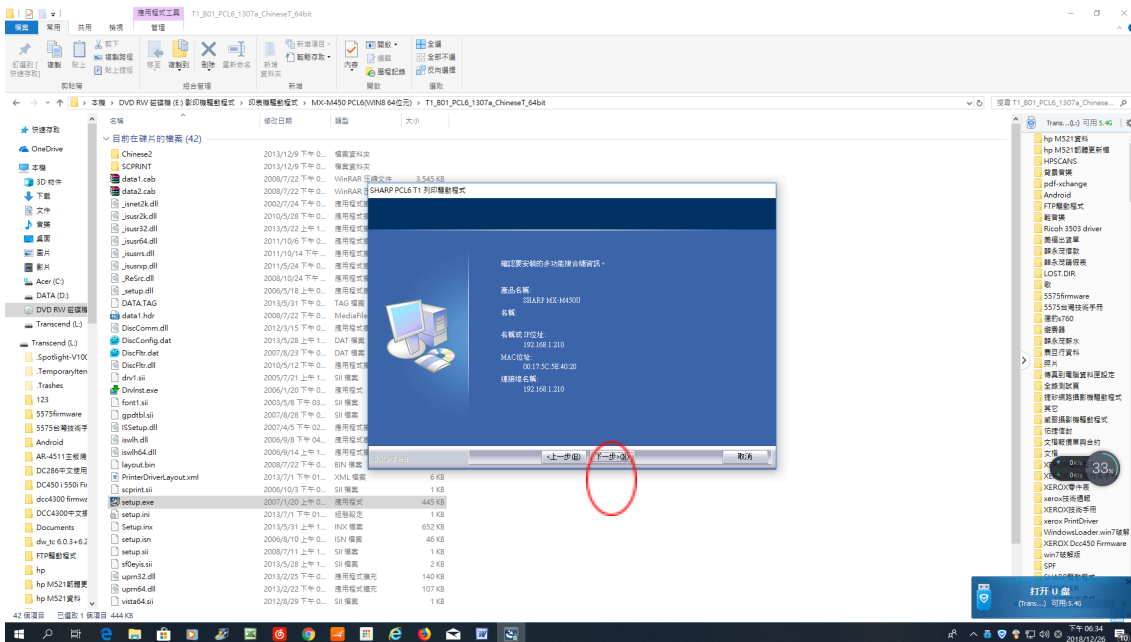
5. 點 setup
選是



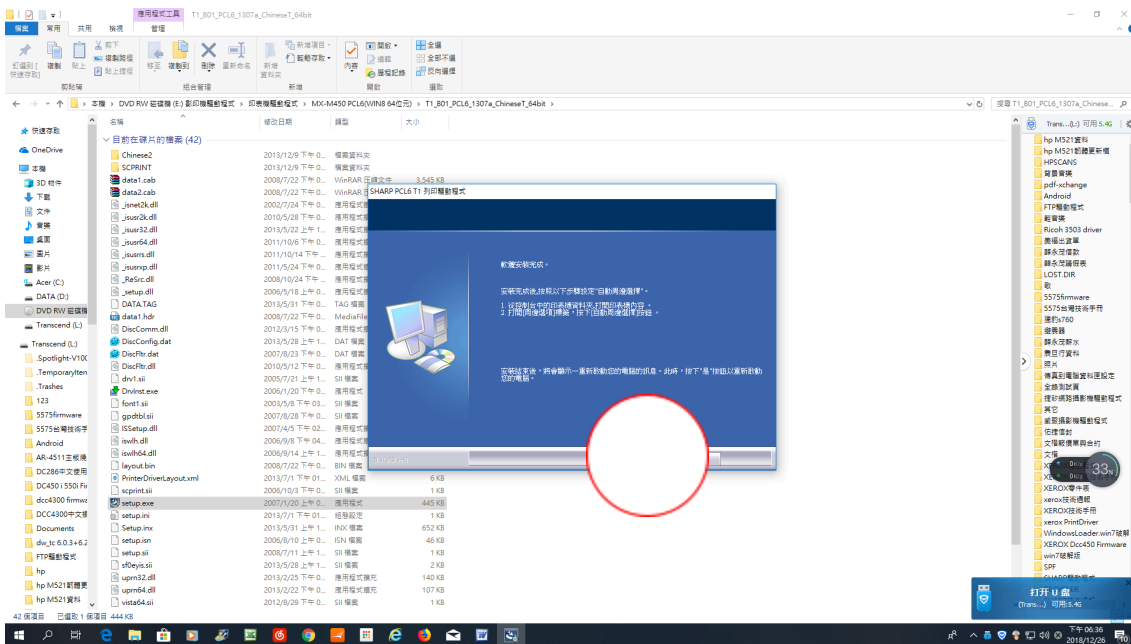
6. 選標準安裝



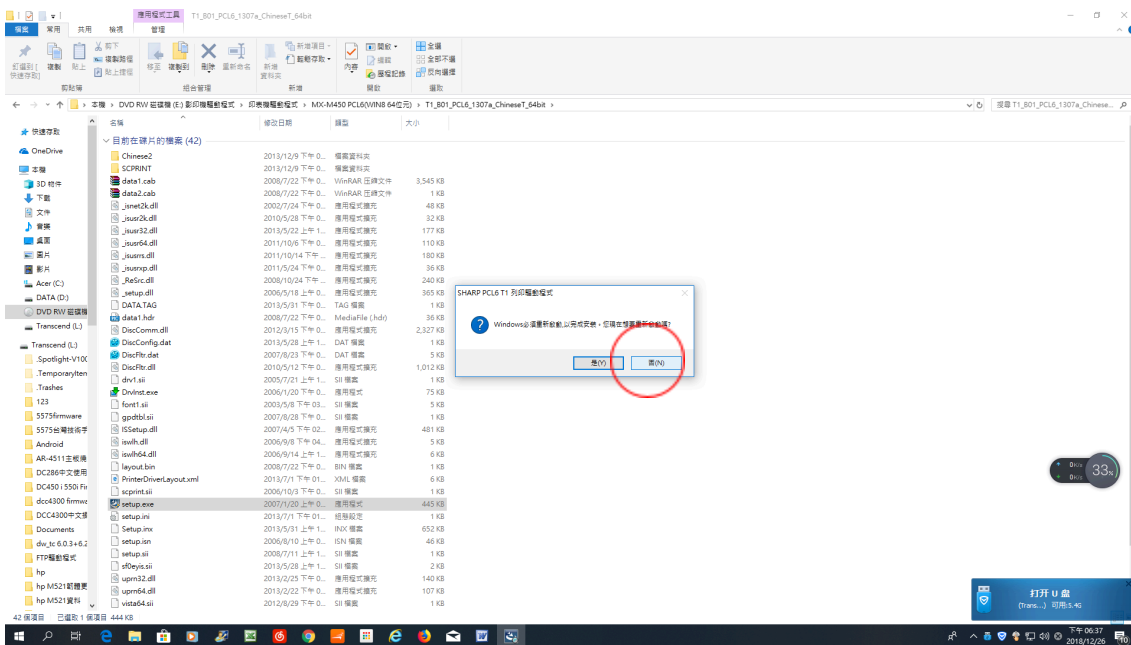
7.點 下一步



8.點 下一步



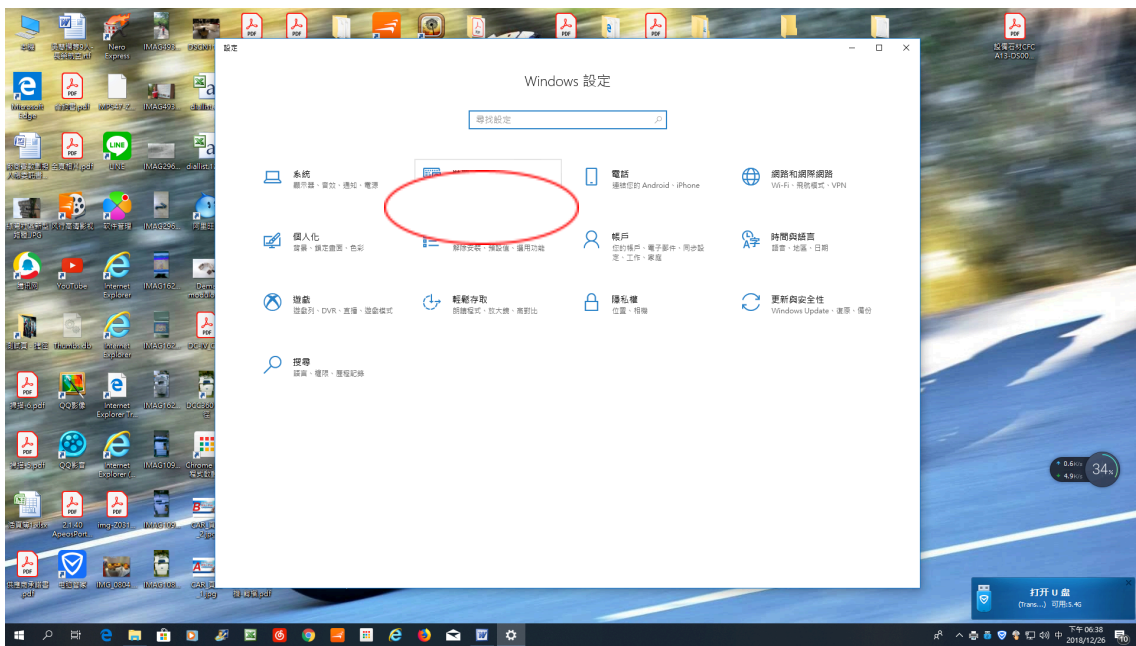
11.點確定



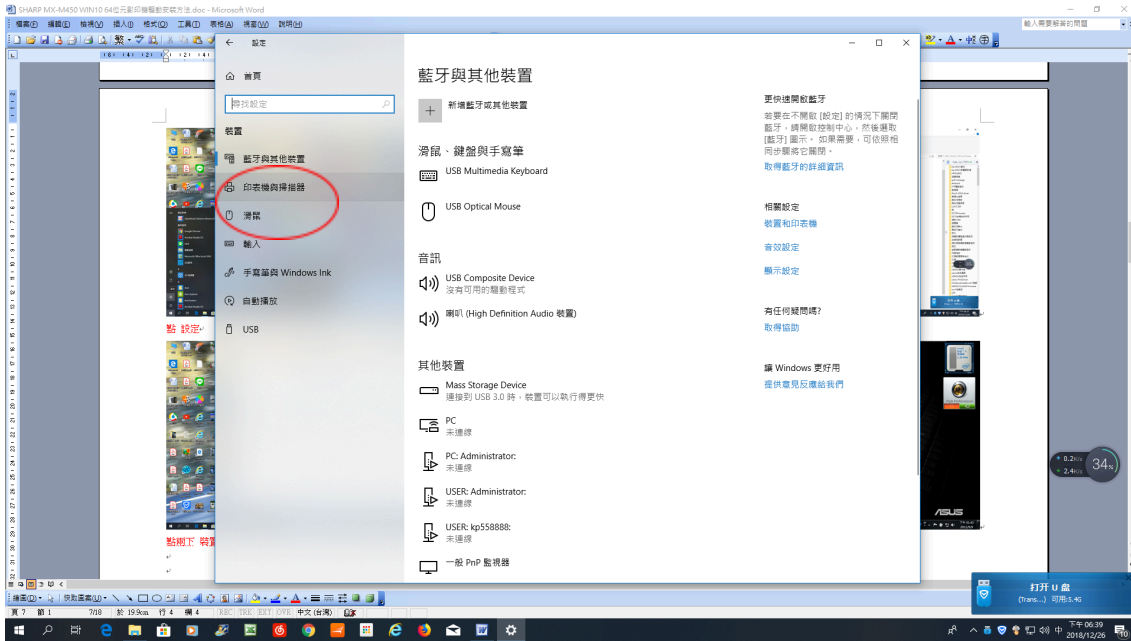
12.按否



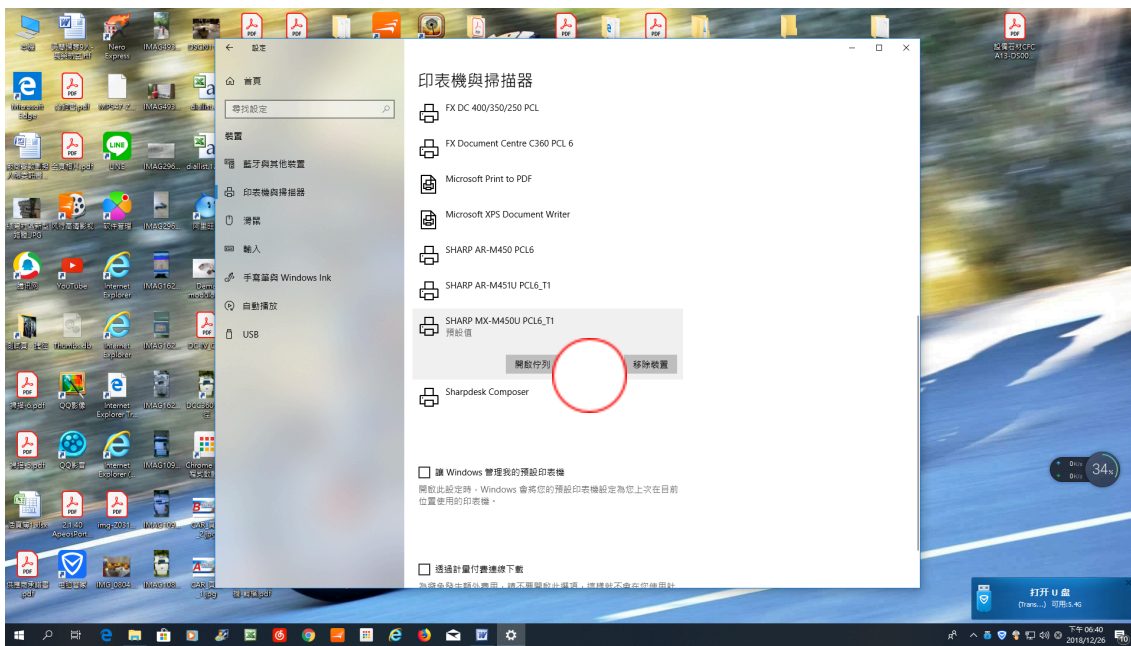
13.點設定



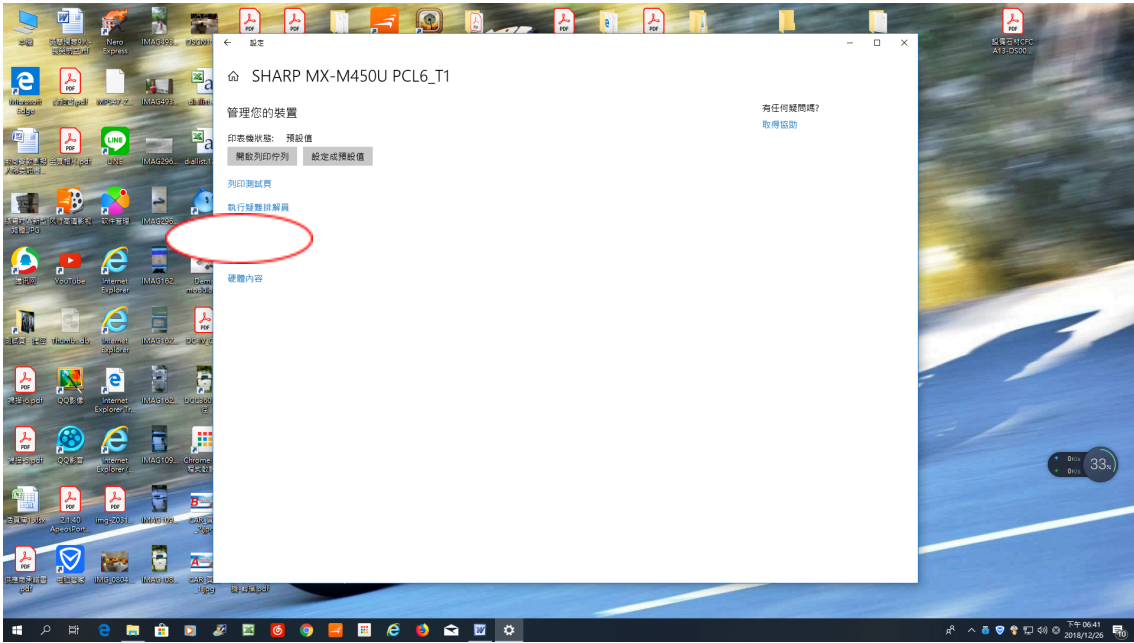
14.點兩下裝置



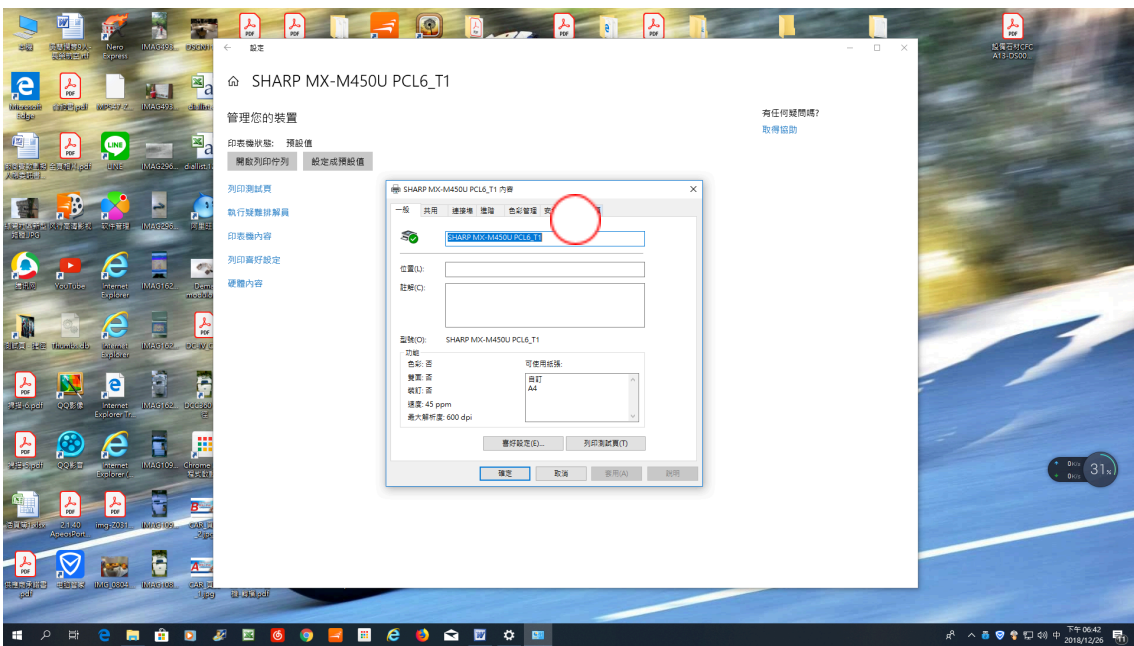
15.點 印表機與掃描器



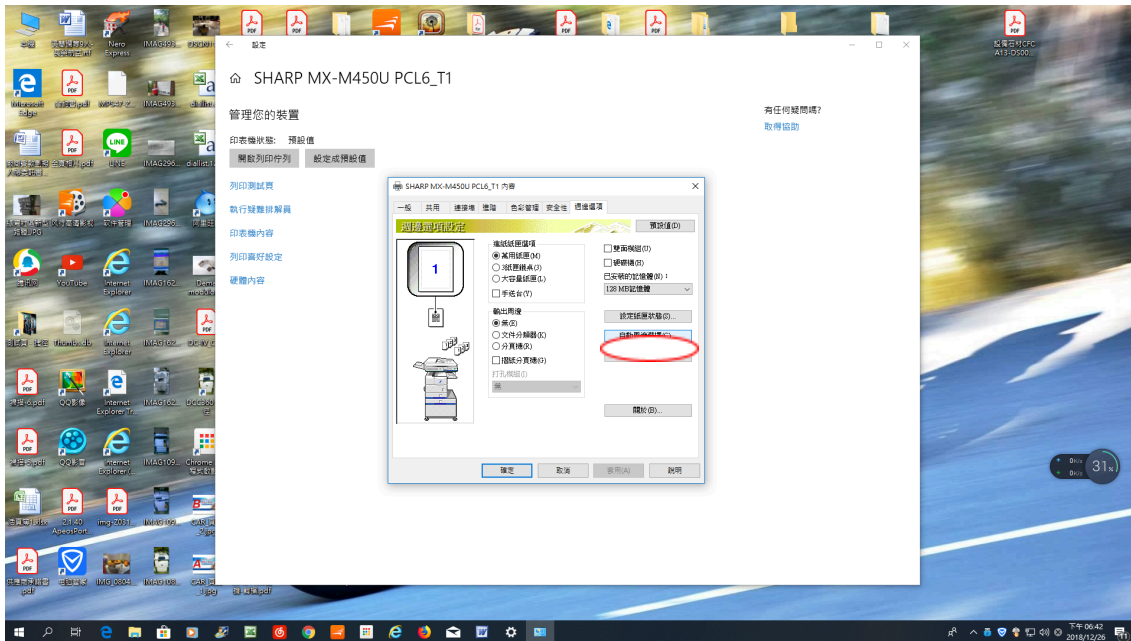
16.點 SHARP MX-M450U PCL6_T1 選 管理



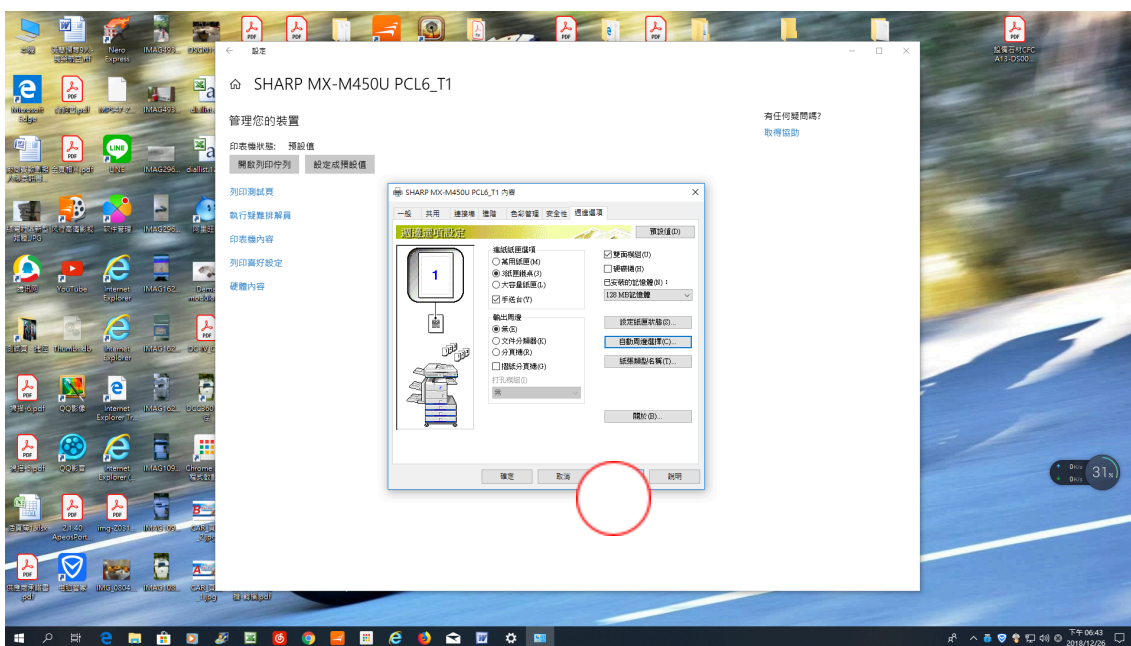
17.點 印表機內容



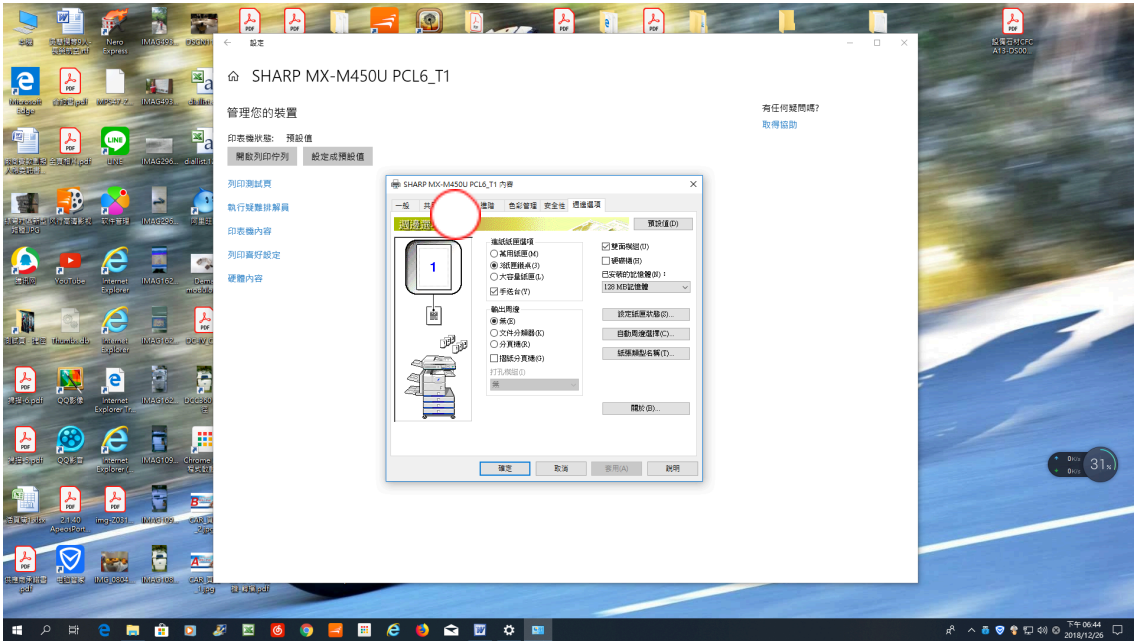
18.點 周邊選項



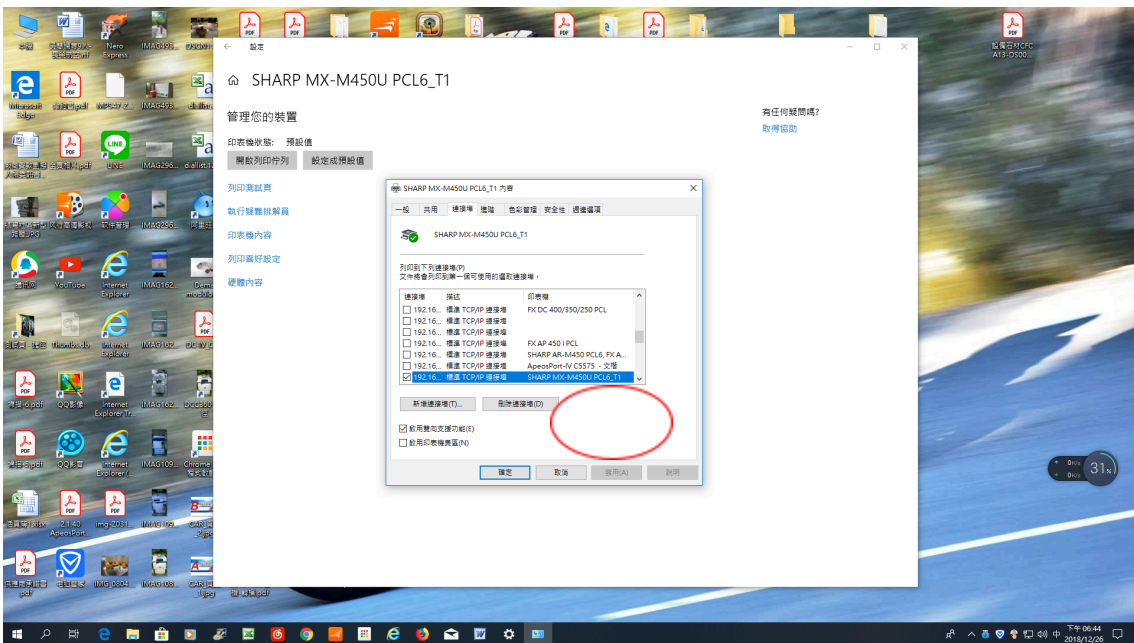
19.點 自動周邊選擇



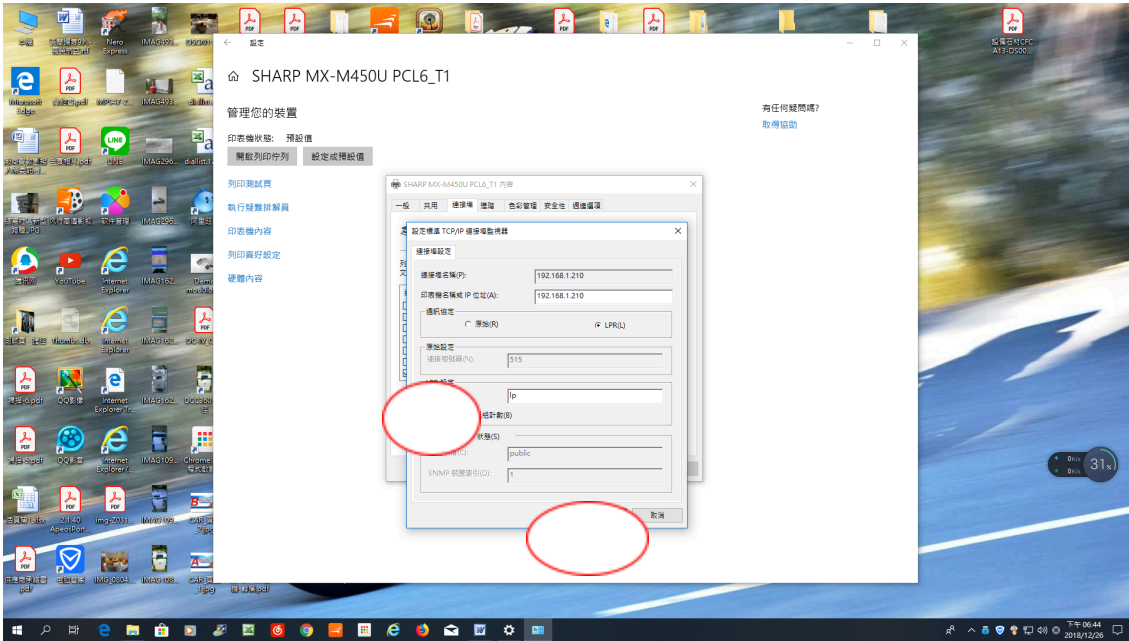
20.點 套用



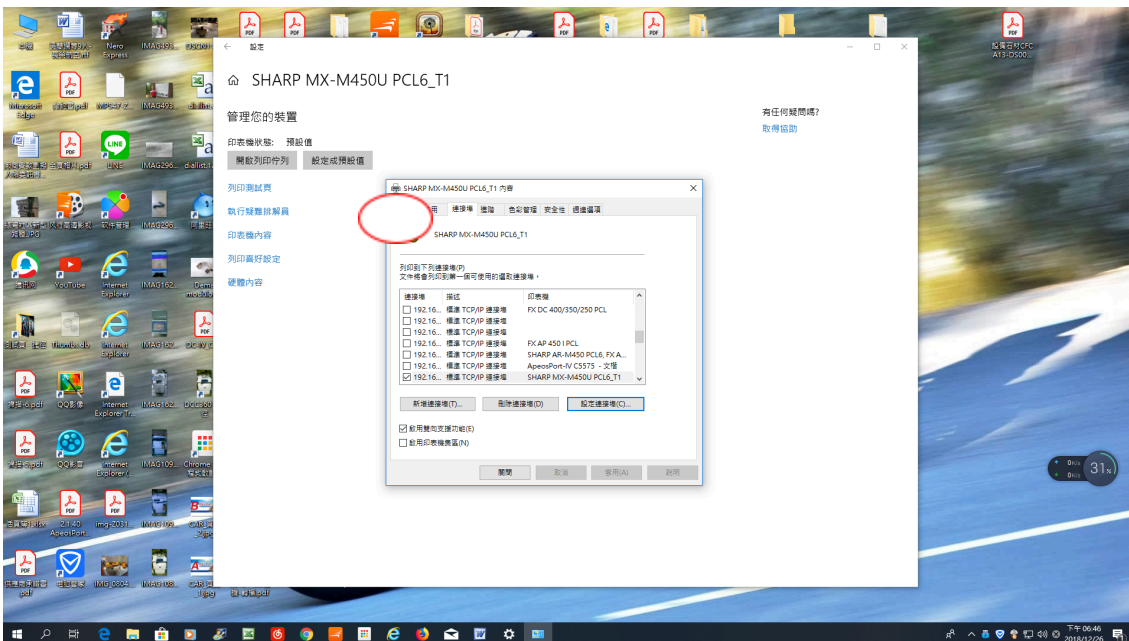
21.點 連接埠



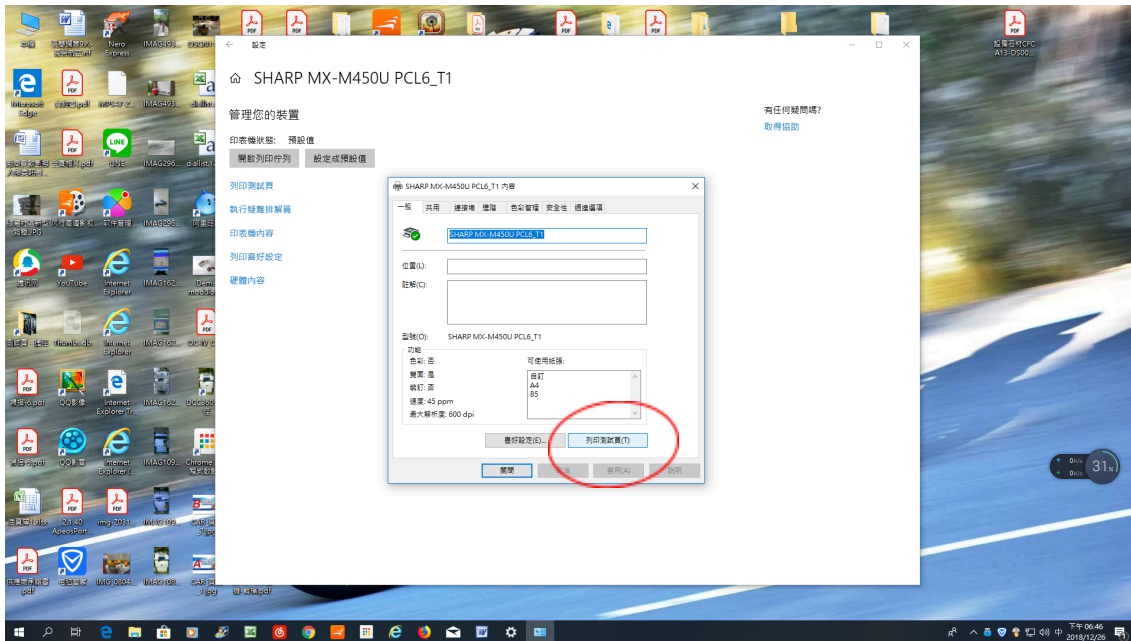
22.點 設定連接埠點



23.啟用LPR位元組計數 請打勾 後 按 確定



24.點 一般



25.按 列印測試頁 看影印機是否有印出來 如果有印出代表安裝成功