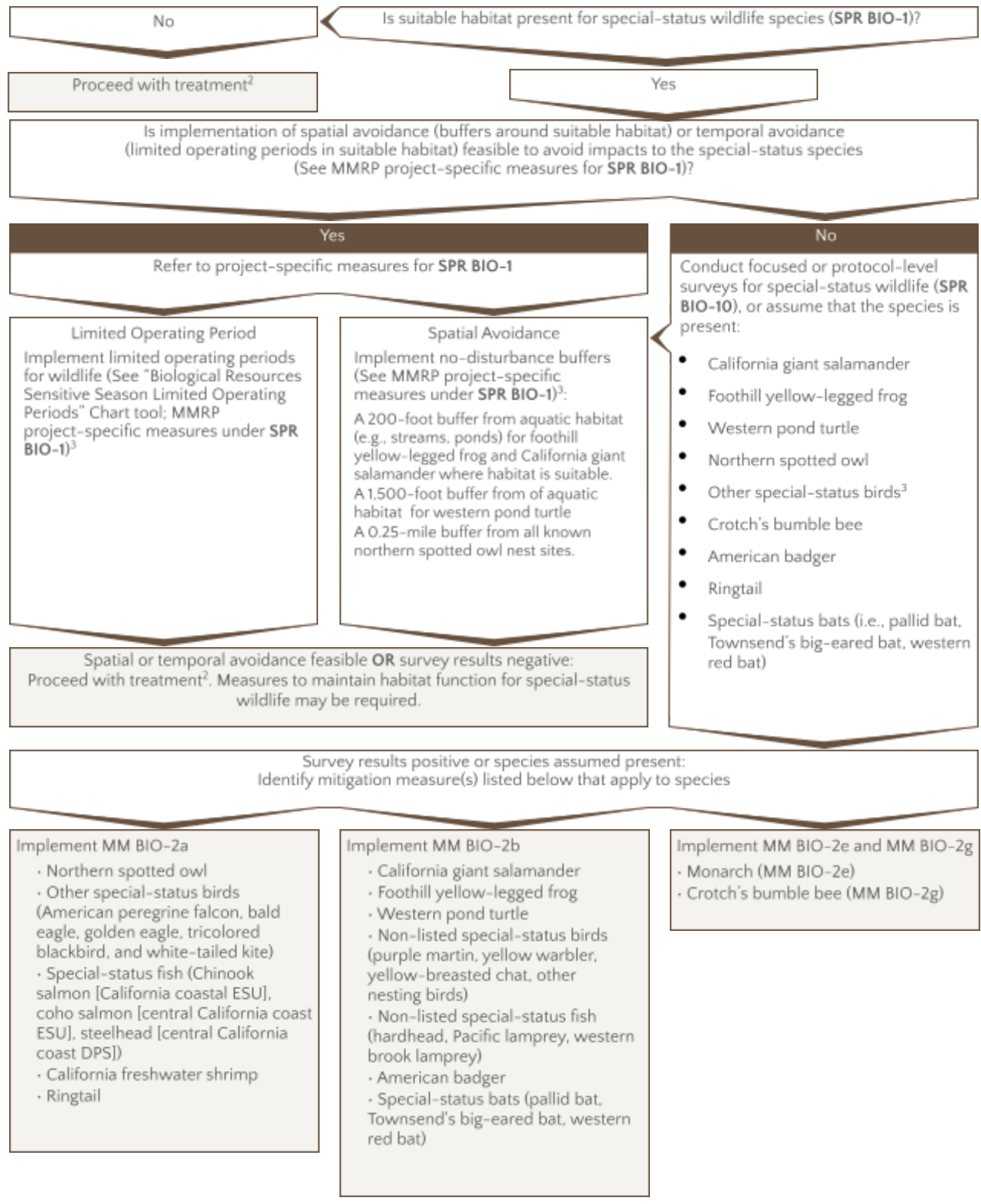




CalVTP MMRP Implementation Tools

Special-Status Wildlife Measures Flow Chart¹



Note: MM = mitigation measure; SPR = standard project requirement.

- Acronyms included: distinct population segment (DPS); evolutionarily significant unit (ESU); mitigation measure (MM); mitigation and monitoring report (MMRP); standard project requirement (SPR);
- Proceed with treatment in compliance with other applicable measures.
- Northern spotted owl avoidance measures involve components of Limited Operating Periods and spatial avoidance. Review the Limited Operating Periods chart and the MMRP for complete guidance regarding avoidance of this species.
- Other special-status birds that may occur in the project include American peregrine falcon, bald eagle, golden eagle, purple martin, tricolored blackbird, white-tailed kite, yellow warbler, yellow-breasted chat, and other nesting birds; bank swallow, burrowing owl, California black rail, grasshopper sparrow, great gray owl, loggerhead shrike, long-eared owl, northern goshawk, northern harrier, song sparrow ("Modesto" population), Swainson's hawk, tricolored blackbird, white-tailed kite, yellow warbler, and yellow-breasted chat.