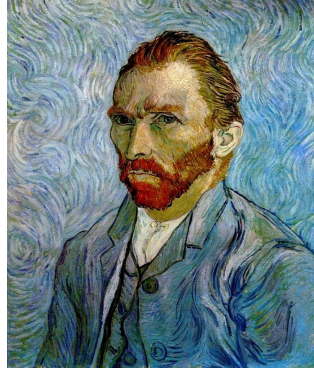


Foundations Level Visual Arts Benchmark (2017)

1. ___ Artists get their Ideas from all of the following except:

- A. Nature
- B. People and real world events
- C. Artists of the Past
- D. Physical



2. ___ (Referencing the image above) Identify the purpose / function of the artwork above:

- A. Social
- B. Physical
- C. Personal
- D. Educational

3. ___ What purpose would a mural painted on a community building serve as?

- A. Social
- B. Personal
- C. Spiritual
- D. Physical

4. ___ Overlapping multiple layers of glue and paper over materials such as cardboard, paper or foam is a technique called?

- A. Collaging
- B. Pastel
- C. Plaster Casting
- D. Paper Mache'

5. ___ The four steps to Art Criticism are Description, Analysis, Interpretation, and Judgement? A. True B. False

6. ___ The art process that involves inking blocks and pressing onto paper to create multiple designs is referred to as:

- A. Printmaking
- B. Casting
- C. Carving

7. ___ The machine used to run prints is called the

- A. Linoleum Printer
- B. Roller
- C. Printing Press

Foundations Level Visual Arts Benchmark (2017)

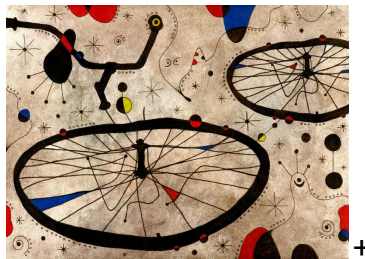
8. ___ The tool used to remove material from a linoleum block is called a?

- A. Brayer
- B. Gouge
- C. Carving Tool



9. ___ The dominant Principle of Design used in the artwork above is.

- A. Rhythm
- B. Pattern
- C. Line



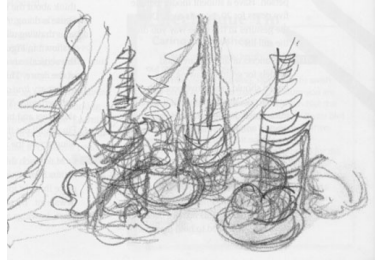
10. ___ The dominant Elements of Art used in the artwork above is.

- A. Color
- B. Rhythm
- C. Line

11. ___ A simple line that outlines and describes a form is called

- A. Implied Lines
- B. Outline
- C. Gesture
- D. Contour

Foundations Level Visual Arts Benchmark (2017)



12.__(Referencing the image above) Lines that are created using quick strokes and show movement are?

- A. Implied Lines
- B. Out lines
- C. Gesture Lines
- D. Dimensional Lines

13.__(The closer lines are together the _____ they will appear. (Example: Hatching)

- A. Bigger
- B. Darker
- C. Brighter
- D. Straighter



14.__(Referencing the image above) Emphasis in art is...

- A. The principle of design that creates unity by stressing the similarities of separate but related parts.
- B. The principle of design that makes one part of a work dominant over the other parts.
- C. The quality of wholeness or oneness that is achieved through the effective use of the elements of art and principles of design

15.__(Clay that has lost some moisture, yet is still workable is referred to as?

- A. Fired
- B. Wet
- C. Bone Dry
- D. Leather Hard

16.__(Lines can be used to show emotion in an artwork.

- A. True or B. False

Foundations Level Visual Arts Benchmark (2017)



17. ____ The most dominant element of art seen in the work above is?

- A. Space
- B. Value
- C. Line
- D. Color

18. ____ Value is the amount of ____ and ____ in a composition.

- A. Warmness and coolness
- B. Texture and Intensity
- C. Balance and contrast
- D. Lightness and Darkness



19. ____ (Referencing the image above) Unity in art is...

- A. A principle of design concerned with differences or contrast.
- B. The principle of design that makes one part of a work dominant over the other parts.
- C. The quality of wholeness or oneness that is achieved through the effective use of the similar elements of art.

20. _____ style of drawing is created by overlapping a series of lines to create value.

- A. Marking
- B. Cross-Hatching
- C. Stippling
- D. Washing

21. ____ The best value scale in a drawing should depict at least ____ gradations from white to black.

- A. Two
- B. Four
- C. Five
- D. Seven

Foundations Level Visual Arts Benchmark (2017)



22. ____ Using a pencil to show all the values of gray from black to white is called a?

- A. Scale
- B. Gradation
- C. Shade
- D. Transition

23. ____ Materials used to create art are called?

- A. Pencils
- B. Ready Mades
- C. Supplies
- D. Mediums



24. ____ Artwork that is three-dimensional, like the ones above are called?

- A. Painting
- B. Sculpture
- C. Collage
- D. Design

25. ____ The overcoating, shiny or dull, used to finish clay and seal surfaces to be used is called?

- A. Underglaze
- B. Slip
- C. Glaze
- D. Slab

26. ____ A shape is _____ dimensional and a form is _____ dimensional.

- A. Three, Two
- B. Two, Three
- C. two, Four
- D. One, Three

27. ____ Name the two kinds of space found in art _____ & _____.

- A. Solid & Open
- B. Open & Closed
- C. Geometric & Organic
- D. Positive & Negative

28. ___ Red, Yellow, and Blue are Classified as the...

- A. Primary Colors
- B. Secondary Colors
- C. Tertiary colors
- D. Primitive colors



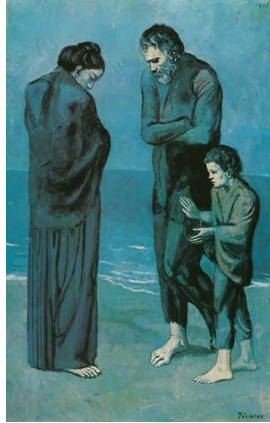
29. ___ (Referencing the image above) Identify the color scheme of this Georgia O'keefe Painting?

- A. Complimentary
- B. Warm
- C. Monochromatic
- D. Cool

30. ___ Which color combo would make a secondary color ...

- A. red+white
- B. blue+yellow
- C. black+purple
- D. purple+green

Foundations Level Visual Arts Benchmark (2017)



31.__(Referencing the image above) Using one color and mixing that color with black and white to create value is what type of color scheme?

- A. One color
- B. Monocolor
- C. Monochromatic
- D. Onecolormatic

32.____Darkening a color down by adding black is called a...

- A. Shade
- B. Tint
- C. Neutral
- D. Shadow

33.____Pink is a _____ of red...

- A. Shade
- B. Lighten
- C. Tint
- D. Highlight

34.____When you Mix a primary color with its adjacent secondary color you get a?
(Yellow-Orange is an example)

- A. Bright color
- B. Primary Color
- C. Dark Color
- D. Tertiary Color

Foundations Level Visual Arts Benchmark (2017)

35. ___ Neutral Colors are...

- A. Black, White, Gray, Brown
- B. Orange, Brown, Red
- C. Black, White, pink

36. ___ Using an object to apply paint or other mediums is called? Objects can also be pressed into materials like clay.

- A. Marking
- B. Stamping
- C. Etching
- D. Designing

37. ___ Complementary pairs are located directly across from each other on the color wheel.

- A. True or B. False

38. ___ Each complementary pair has a warm color and a _____ color.

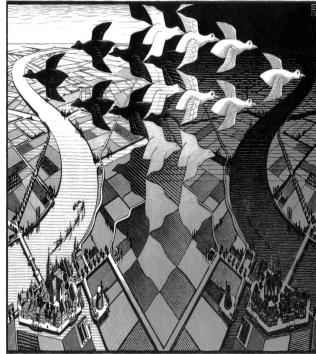
- A. Cool
- B. Neutral
- C. Complementary
- D. Primary

39. _____ refers to a group of three colors side by side on the color wheel.

- A. Chromatic
- B. Harmony
- C. Analogous
- D. Secondary

40. ___ Tactile texture is texture that you _____,
Visual texture is texture that you _____.

- A. Feel, see
- B. See, feel
- C. Paint, Photo
- D. Hear, see



41. ___ In Art, Pattern is...

- A. The principle of art that is concerned with decorative surface design.
- B. Rhythm you receive through your eyes rather than through your ears.
- C. The principle of art described as the repetition of elements or objects.

Foundations Level Visual Arts Benchmark (2017)

42. Balance is the principle of design concerned with equalizing visual weight, or elements, in a work of art.

A. True or B. False



43. Symmetry Occurs when...like seen in the Tiki Mask above.

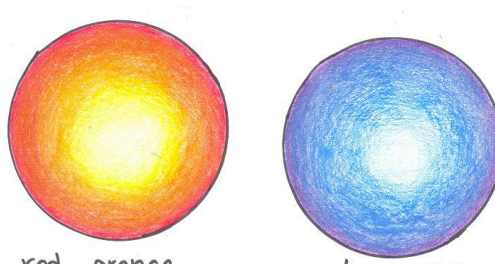
- A. Different elements are placed on opposite sides of a central axis.
- B. A special type of formal balance in which two halves of a balanced composition are identical, mirror images of each other.
- C. The forces or elements of a design come out (radiate) from a central point.

44. Art created outside of Europe and European colonies is considered?

A. Primitive B. Eastern C. Non-Western D. Western

45. Mixed media art, like the stained glass design, uses more than one medium?

A. True or B. False



46. (Referencing the image above) The technique used was...

A. color blending or B. color shading

Foundations Level Visual Arts Benchmark (2017)



- 47.__(Referencing the image above) The way that the artist places shapes, designs, colors within a work of art is referred to as...**
A. layout B. composition
- 48.__(The specific area in a work of art that artists create interest in order to catch the viewer's eye is referred to as?**
A. balance B. middle C. focal point D. center
- 49.__(The stage of clay that is brittle and has lost all water is referred to as?**
A. Fired B. Wet C. Bone Dry D. Leather Hard
- 50.__(Manipulation of an image using technology is referred to as**
A. Techno Changing
B. Digital Editing
C. Graphic Design
D. Photoshopping