



Israeli-Palestinian Guide

Street signs Edition

In this guide, you will find street signs specific to Israeli and Palestinian cities. For now, it only deals with the “biggest” in order of population, but it’s not excluded that it will be extended to smaller cities. Besides, regarding the description of the poles, it is only about the poles apart: the street signs can also be on other signs.

PS : Please do not come and complain about your opinions on the Israeli-Palestinian conflict, I am not taking a position here, I am only following the opinion of the UN.

Guide by Ice-Dodo#5138 ([GeoGuessr FR \(Discord\)](#)) - [French Document](#)

Summary

- I - Northern District
- II - Haifa District
- III - Central District
- IV - Tel Aviv District
- V - Jerusalem District
- VI - Southern District
- VII - Palestine (West Bank)
- VIII - Others

Training map : [Israeli–Palestinian Street Signs](#)

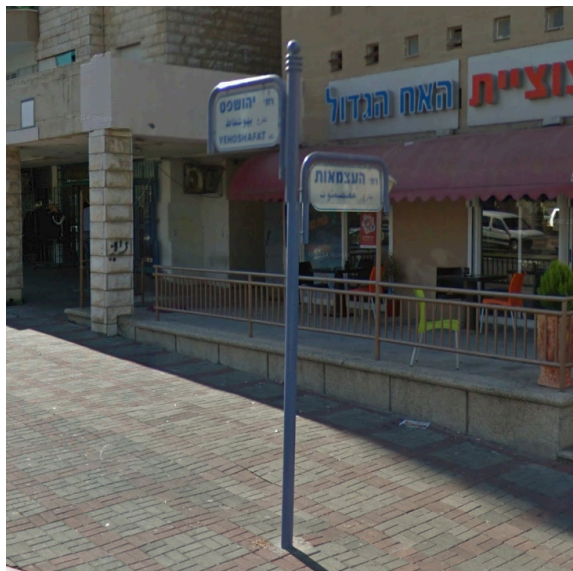
I - Northern District



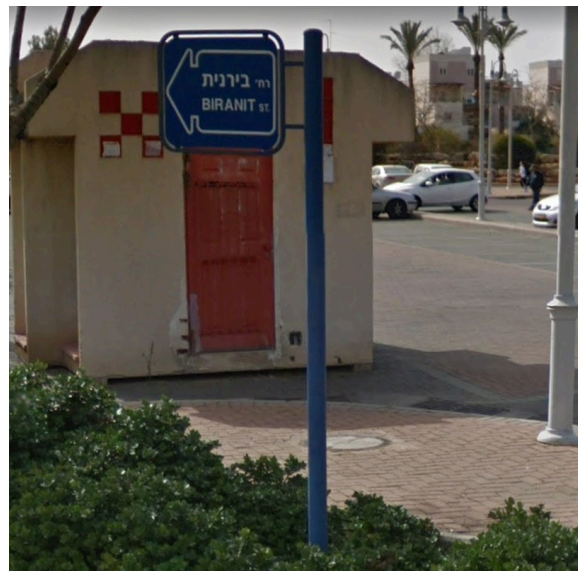
Nazareth : The sign and the pole are green. The panel is surrounded by a half frame.



Nahariyya : The sign and the pole are white, the writings are green. The sign is surrounded by a $\frac{3}{4}$ frame. The colors can also be reversed and the sign can also be thick without a frame.



Acre : The pole and the writings are blue, the sign is white. The sign is surrounded by a $\frac{3}{4}$ frame.



Karmiel : The pole and the sign are blue, the writings are white. The sign is completely surrounded by a frame and the writings are surrounded by an arrow design. The arrow pattern can be just a white arrow.



Afula : The pole and the sign are dark green, the writings are yellow. The panel is surrounded by a full frame, colored with a yellow outline and sometimes has a small decoration above it.



Tiberias : The pole is yellow. The sign has a colored arrow design, surrounded by a full yellow frame. The writings are black.



Shefar'am : The pole is gray. The sign is white with a green outline, surrounded by a gray frame measuring $\frac{3}{4}$. The writings are green.



Safed : The pole is green. The sign is white, surrounded by a full green frame. The writings are black and there are large drawings.



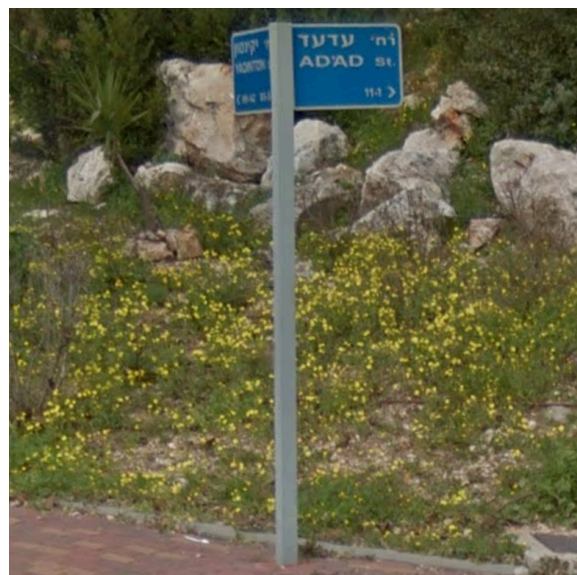
Sakhnin : The pole is gray. The sign is white and very large in with a shape of an arrow surrounded by a full gray frame. The writings are black.



Migdal HaEmek : The pole is green. The sign is white with a green outline, surrounded by a green frame measuring $\frac{3}{4}$. The writings are green.



Qiryat Shemona : The pole is gray. The sign is white, sometimes thick. The writings are black and numbers are inscribed.



Ma'alot-Tarshiha : The pole is gray or yellow. The sign is blue with a gray outline. The writings are white.



Yokne'am : The pole is gray. The sign is dark green with a yellow outline, surrounded by a full gray frame. The writings are yellow. What mainly differentiates him from Afula is the fact that they are hanged from the pole.



Beit She'an : The pole is blue. The sign is white surrounded by a blue frame measuring $\frac{3}{4}$. The writings are blue. What mainly differentiates it from Acre is the coat of arms at the top left.

II - Haifa District



Haifa : The pole is gray. The sign is white and quite thick. The writings are black. There are also numbers in a triangle in a bottom corner.



Haifa² : The pole is gray. The sign is blue and quite large surrounded by a full gray frame. The writings are white.



Hadera : The pole is blue. The sign is white and quite thick with a blue outline. The writings are blue.



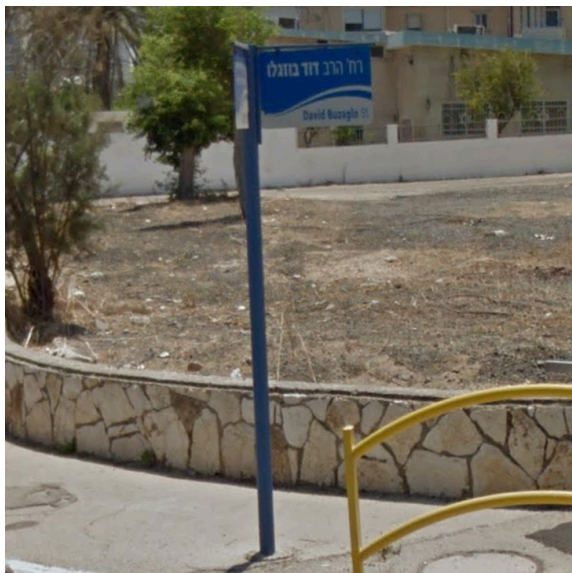
Hadera² : The pole and the sign are blue. The writings are white. The panel is surrounded by a blue frame measuring $\frac{3}{4}$.



Kiryat Ata : The pole is dark blue. The sign is light blue with a full dark blue outline. The writings are white contained in a dark blue rectangle.



Kiryat-Motskin : The pole is yellow. The sign is white, quite thick with a yellow outline. The writings are black. There are numbers in a triangle in one corner.



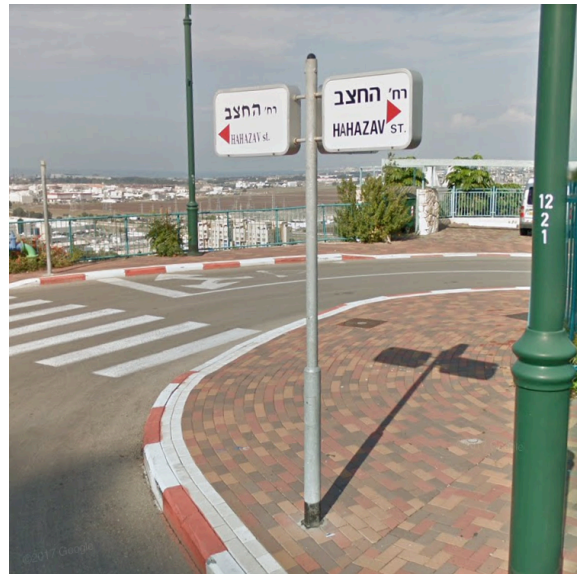
Kiryat Yam : The pole is blue. The sign is blue and white: the colors are separated by a wave pattern. It can also be yellow. The writings are white and blue.



Kiryat Bialik : The pole is dark green. The sign is brown with a yellow outline, surrounded by a half dark green frame. The writings are white.



Baka Jatt : The pole is pink. The sign is white surrounded by a pink frame measuring $\frac{3}{4}$. The writings are purple.



Nesher : The pole is gray. The sign is fairly thick white, with a gray outline. The writings are black. Sometimes there is a red triangle.



Tirat Carmel : The pole is gray. The sign is green with white outlines, and is surrounded by a full gray frame. The sign is rounded on the outside. The pole can also be simply green.



Or Akiva : The pole and the writings are blue. The sign is white with a blue outline, surrounded by a blue frame measuring $\frac{3}{4}$. There is also a coat of arms in one corner of the sign.

III - Central District



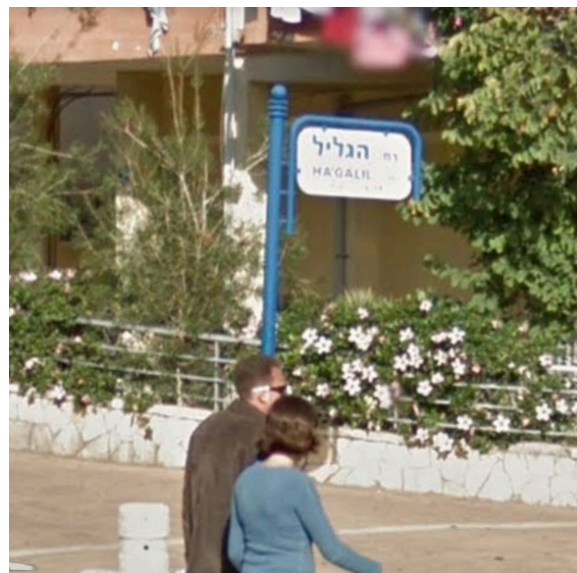
Kfar Yona : The pole is dark green. The sign has an atypical shape. It is blue, red or green with white writing. There are also small arrows on a light blue background.



Rishon LeTsiyon : The pole can be of various colors. The sign is white or orange. What is specific to the city is the flower located to the left of the panel.



Petah Tikva : The pole is gray and usually has 3 yellow squares stuck on with numbers. The sign is white, thick with a gray outline. The writings are black.



Netanya : The pole is blue. The sign is white with blue writing and a blue $\frac{3}{4}$ frame.



Rehovot : The pole is dark green. The sign is white with a dark green outline and rounded corners, surrounded by a dark green $\frac{3}{4}$ frame. The writings are dark green.



Kefar Sava : The pole is dark green. The sign is thick, white with a dark green outline and rounded corners. The writings are black.



Modi'in Makabim-Re'ut : The pole is gray. The sign is green with white and yellow writing.



Lod : The pole and the writings are slightly dark green. The signs are white with a green outline.



Ra'anana : The pole is dark green. The sign is white, surrounded by a full dark green frame. The writings are dark green. There is also a drawing on the right. There are also signs of the same style but thick without drawing.



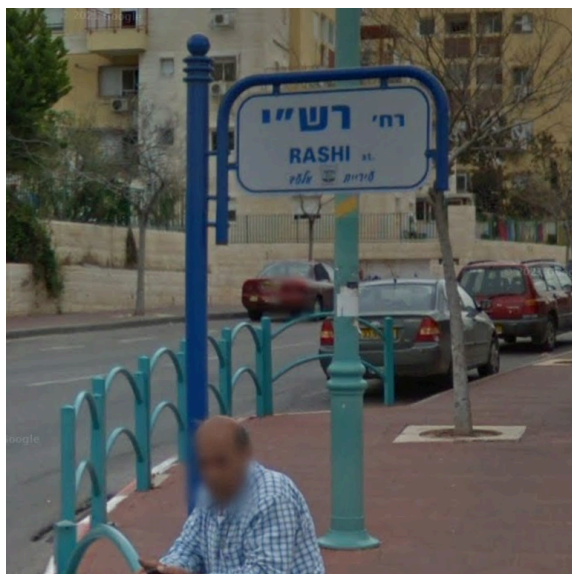
Ramla : The pole is dark green. The sign has rounded corners, is white with a dark green outline, surrounded by a dark green 3/4 frame. The writings are dark green.



Hod Hasharon : The pole and the sign are white. The sign is sometimes surrounded by a white frame making 3/4 and drawings are sometimes located at the bottom of the panel. The writings are green.



Ness Ziona : The pole is dark green. The sign is white with a green outline, surrounded by a dark green 3/4 frame. The writings are green, lighter than the pole.



El'ad : The pole is blue. The sign is white with a blue outline, surrounded by a blue frame measuring $\frac{3}{4}$. A thick light blue version also exists. The writings are blue.



Rosh Haayin : The pole is gray. The sign is fairly light green, with a white outline, surrounded by a gray frame measuring $\frac{3}{4}$. The writings are white, as is the large arrow.



Yavne : The pole is cyan. The sign is green with a white outline, surrounded by a full cyan frame. The writings are white.



Yehud-Monosson : The pole and the sign are green. The sign has white outlines and is surrounded by a green half frame. The writings are white.



Giv'at Shmu'el : The pole is green. The sign is dark green often with a colored line at the top. The writings are white.



Tira : The pole is cyan. The sign is small, white with a light green outline. The writings are light green.

IV - Tel Aviv District



Tel Aviv-Yafo : The pole is gray. The sign is white, thick, rounded with a gray outline. The writings are black.



Holon : The pole is dark blue. The sign is dark blue with a broad white outline and a circular shape on the outer side. The writings are white.



Bnei Brak : The pole is gray. The sign is white, thick with a gray outline. The writings are black.



Ramat Gan : The pole is gray. The sign is green, thick with an outline. The writings are white. The colors can also be reversed.



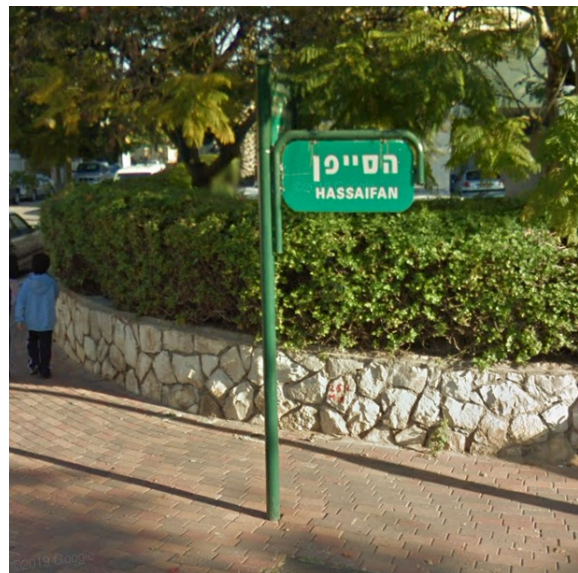
Bat Yam : The pole is dark green. The sign is white, rounded with a green outline, surrounded by a dark green frame measuring $\frac{3}{4}$. The writings are light green.



Herzliya : The pole is blue. The sign is blue, brighter, rounded with a white outline, surrounded by a blue frame measuring $\frac{3}{4}$. The writings are white.



Giv'atayim : The pole is white. The sign is green, arrow-shaped with a white outline, surrounded by a full gray frame. The writings are white.



Ramat HaSharon : The pole is olive green. The panel is green surrounded by an olive green frame measuring $\frac{3}{4}$. The writings are white.



Kiryat Ono : The pole is light green at the bottom and white at the top. The sign is small, green with a white outline, surrounded by a white frame measuring $\frac{3}{4}$. The writings are white.



Or Yehuda : The pole is blue. The sign is white with a blue outline, hanging from a blue bar. The writings are blue.

IV - Jerusalem District

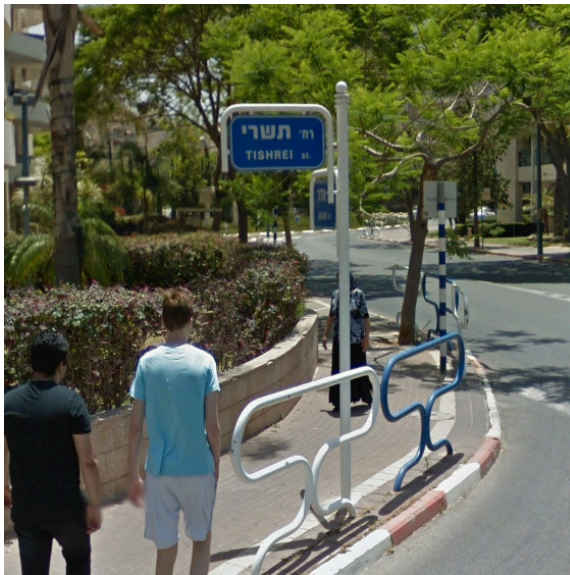


Jerusalem : The pole is gray. The panel is quite large, blue with a metallic outline. The writings are white.

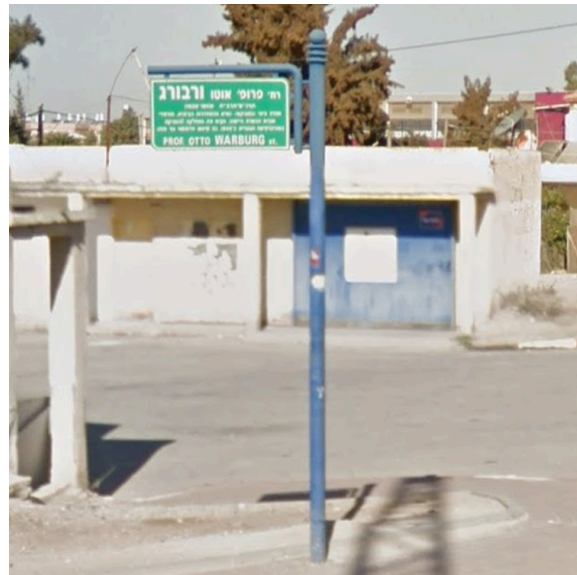


Mevaseret Zion : The pole is white. The panel is green with a white outline, surrounded by a complete white frame with 2 rounded corners and 2 straight corners. The writings and the arrow are white.

V - Southern District



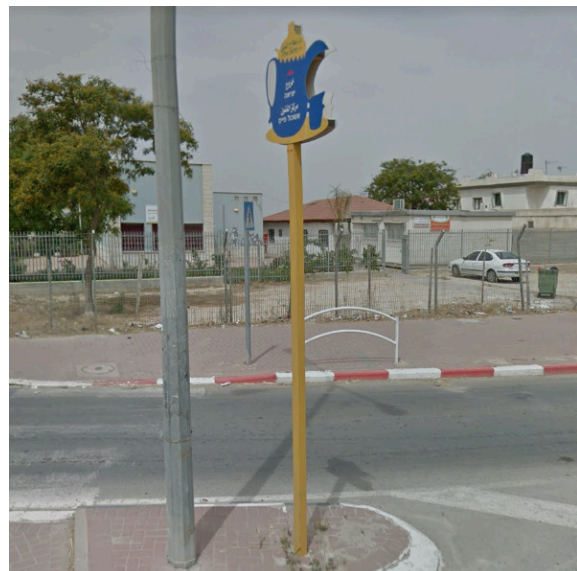
Ashdod : The pole is white. The sign is blue with a blue outline, surrounded by a white frame measuring $\frac{3}{4}$. The writings are white.



Be'er Sheva : The pole is blue. The sign is green with a white outline, surrounded by a half blue frame. The writings are white.



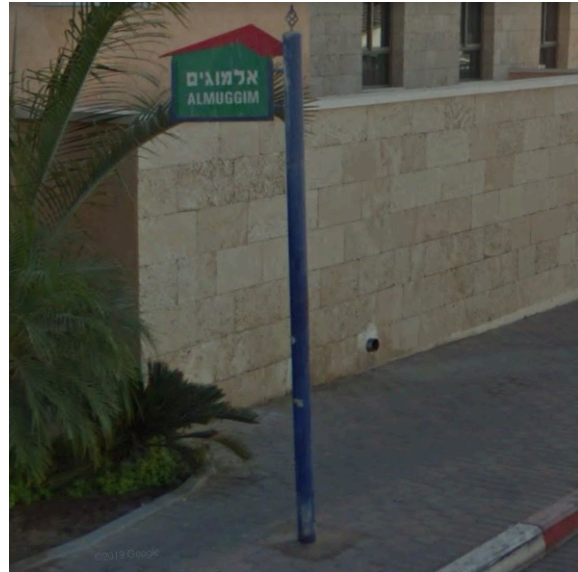
Ashkelon : The pole is light green. The sign is white with a light green outline, surrounded by a light green $\frac{3}{4}$ frame. The writings are light green.



Rahat : The pole is green or blue. The sign is a colored teapot with black or white writing.



Kiryat Gat : The pole is green and doubled, P-shaped. The sign is dark green and white with black and white writing.



Eliat : The pole is blue. The sign is green in the shape of a house with blue outlines and a colored "roof". The writings are white.



Dimona : The pole is gray. The sign is white surrounded by a green frame. The writings are blue and there are sometimes drawings.



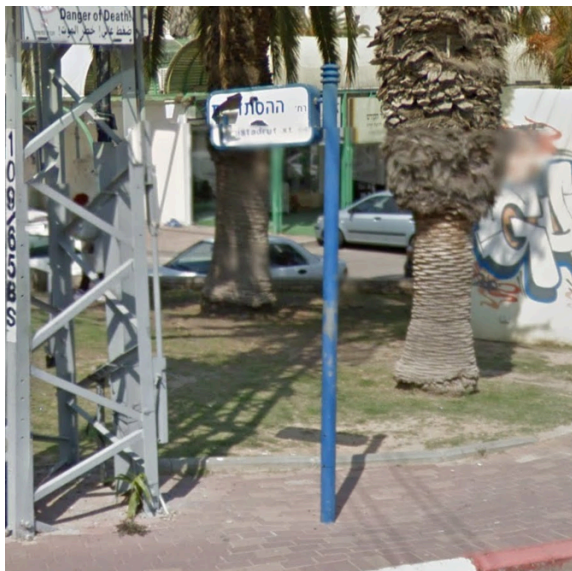
Netivot : The pole is gray. The sign is white, thick with a gray outline. The writings are black.



Ofakim : The pole is dark green. The sign is green with a white outline, surrounded by a dark green $\frac{3}{4}$ frame. The writings are white.



Arad : The pole is gray, light blue or both. The sign is white or light blue. The writings are black.



Sderot : The pole is blue. The sign is blue or white and thick or thin.



Kiryat Malakhi : The pole is blue. The sign is white with a blue outline, surrounded by a blue frame measuring $\frac{3}{4}$. The writings are blue.

VI - Palestine (West Bank)



Modi'in Illit : The pole is variable but the sign will remain green with white writing.



Beitar Illit : The pole is metallic. The sign is green with a white outline, surrounded by a metal frame measuring $\frac{3}{4}$.



Ramallah : The sign is blue with a blue outline. There is no Hebrew.



Ma'ale Adumim : The sign is green, thick with a white outline. There is no Arabic.



Bethlehem : The sign is blue hanging on a wall. It is split in two diagonally and there is no Hebrew.



Ari'el : The pole is light cyan. The sign is white with a green outline, surrounded by a light cyan frame measuring $\frac{3}{4}$. The writings are green and there is a systematic writing at the bottom.

VIII - Others



This kind of street sign is found in many cities, even if another sign is indicated in this document. It appears to be an old generalized street sign.

In many cities, street signs may vary or completely change in some places. So be careful, I try to specify it as much as possible in the text but it is difficult to list everything, do not hesitate to contact me on Discord regarding problems about the document.