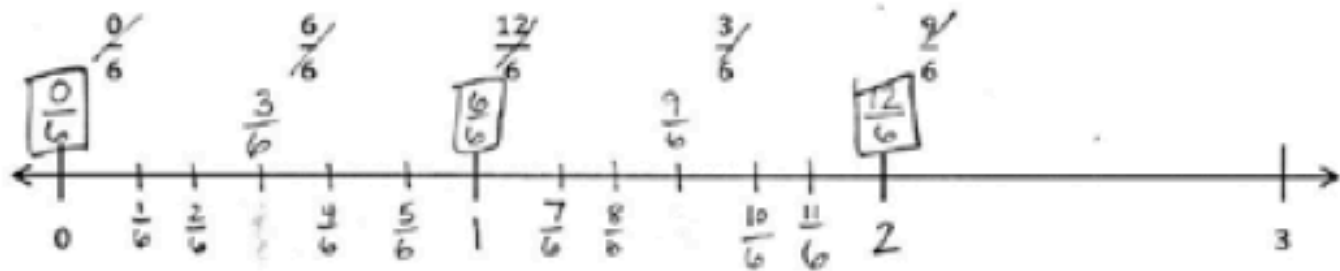
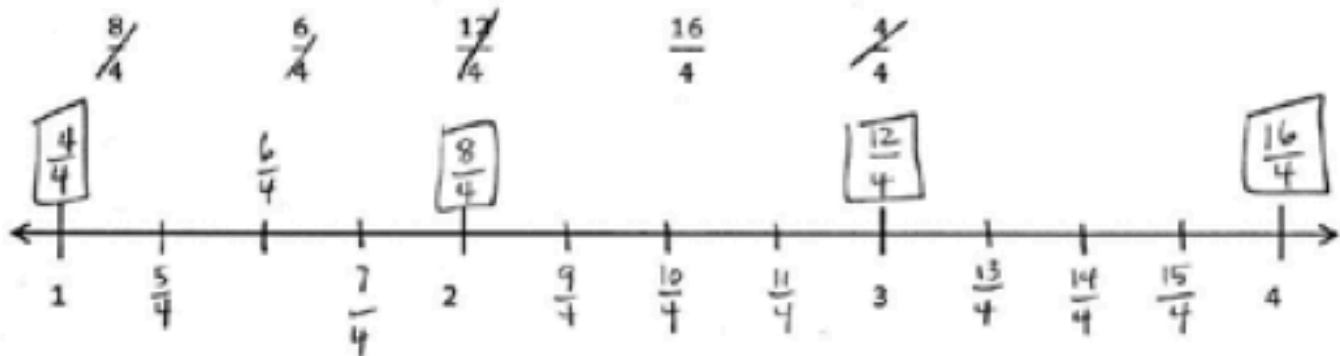


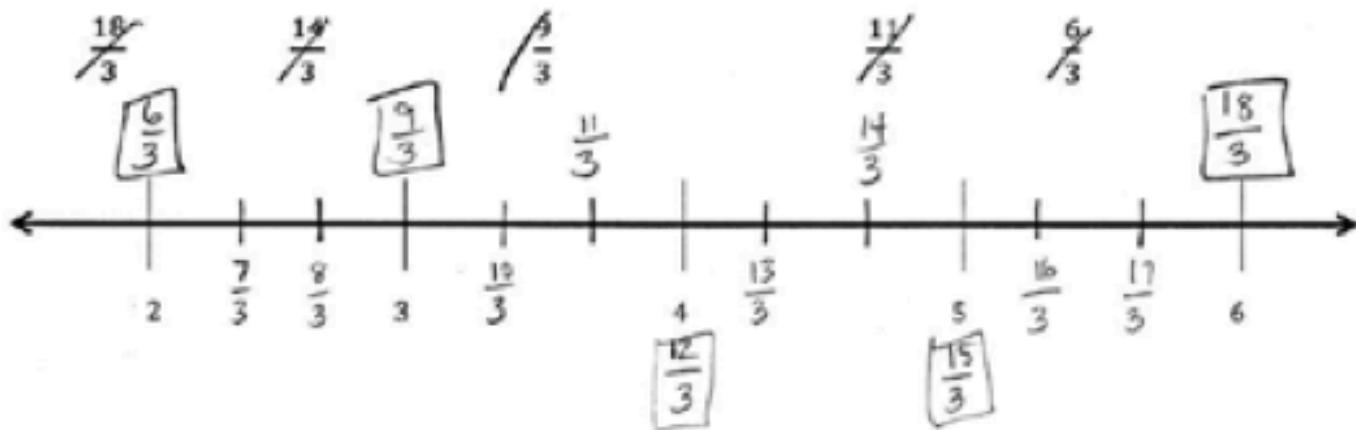
1. Locate and label the following fractions on the number line.



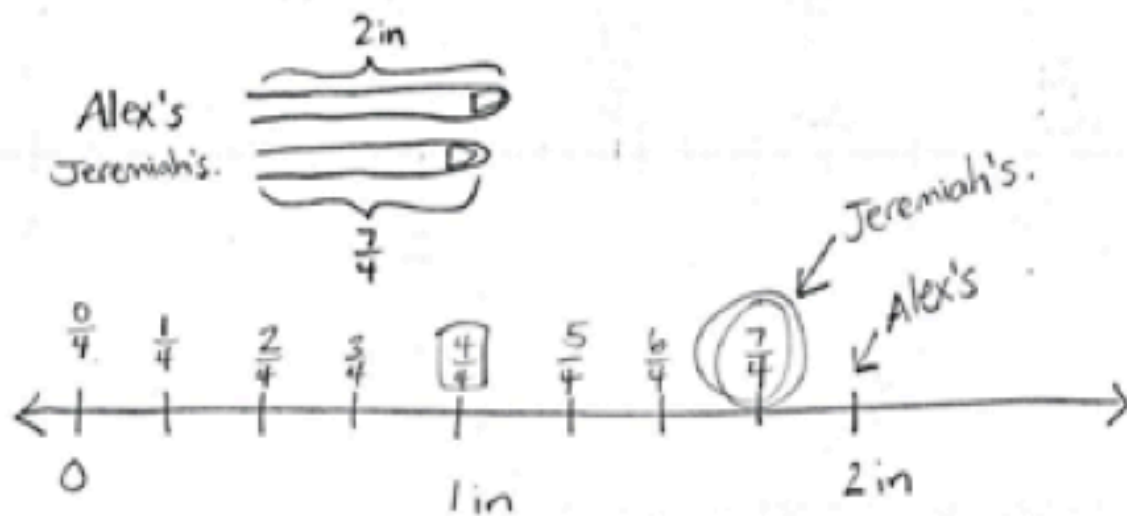
2. Locate and label the following fractions on the number line.



3. Locate and label the following fractions on the number line.



4. For a measurement project in math class, students measured the lengths of their pinky fingers. Alex's measured 2 inches long. Jerimiah's pinky finger was  $\frac{7}{4}$  inches long. Whose finger is longer? Draw a number line to help prove your answer.



$\frac{7}{4}$  comes before 2 on the number line. So Alex's finger is longer.

5. Marcy ran 4 km after school. She stopped to tie her shoelace at  $\frac{7}{5}$  km. Then she stopped to switch songs on her iPod at  $\frac{12}{5}$  km. Draw a number line showing Marcy's run. Include her starting and finishing points and the 2 places where she stopped.

