



## Milford Public Schools 1-20-23 Community Connection News CCC Website

Milford Public Schools Community Connection Center is a bridge between families and available community services

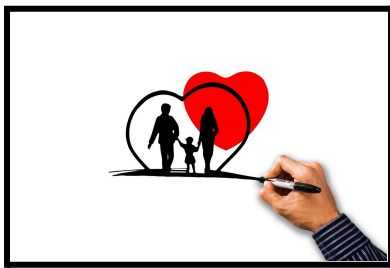
*Serving all Milford elementary students and their families.*



Parents- If you could use support and guidance in any area of your life, such as finances, housing, utilities, legal, mental health, substance use, parenting, etc...

Please contact Mrs. Mary-Kate

Williams at (203)-882-6094 or Mrs. Cara Dascenzo at (203) 301-5664 for information about several resources. They would be happy to help you! The CCC honors all family inquiries as private and confidential unless parent permission is given or Connecticut mandated reporting applies.



*Community Providers*



600 Orange Avenue  
Milford, CT 06461  
Tel: 203.783.5300

Platt Technical High School is located in Milford, Connecticut and is part of the Connecticut Technical Education and Career System. A leader in technical education in Connecticut for over 100 . They deliver a hands-on approach to education.

### [Platt Technical High Schools Services](#)

There are On-Campus Services available for members of the Milford Community. Check the link above for information about Car repairs, Hairdressing and Cosmetology & others that their students can provide for you. Contact Platt Technical High School directly for specific details.



### [Ct Food Share Mobile Pantry](#) Jan. 31st 11am -12pm

Offering a variety of FREE fresh and nutritious foods to individuals and families in a farmers market style setup.



## *This week's activities*



Free Museums in Connecticut For All Kids  
These Connecticut museums offer free admission for all children throughout the year.

- [Bellarmino Museum of Art](#) - scheduled to reopen on January 23, 2023
- [Weir Farm National Historic Site](#)
- [Yale University Art Gallery](#)
- [Ballard Institute and Museum of Puppetry](#) - scheduled to reopen January 27, 2023
- [Submarine Force Library](#) - Closed on Tuesdays
- [CT Antique Machinery Association](#) - by donation, closed on Mondays and Tuesdays, May through October
- [Michael McGivney Pilgrimage Center](#) (Knights of Columbus Museum)

*Have a Great Week!*