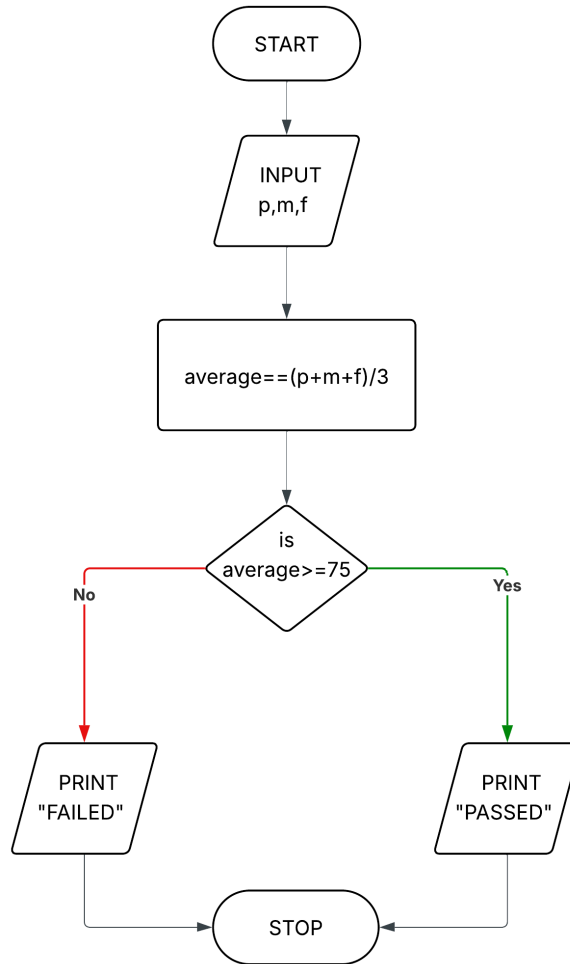


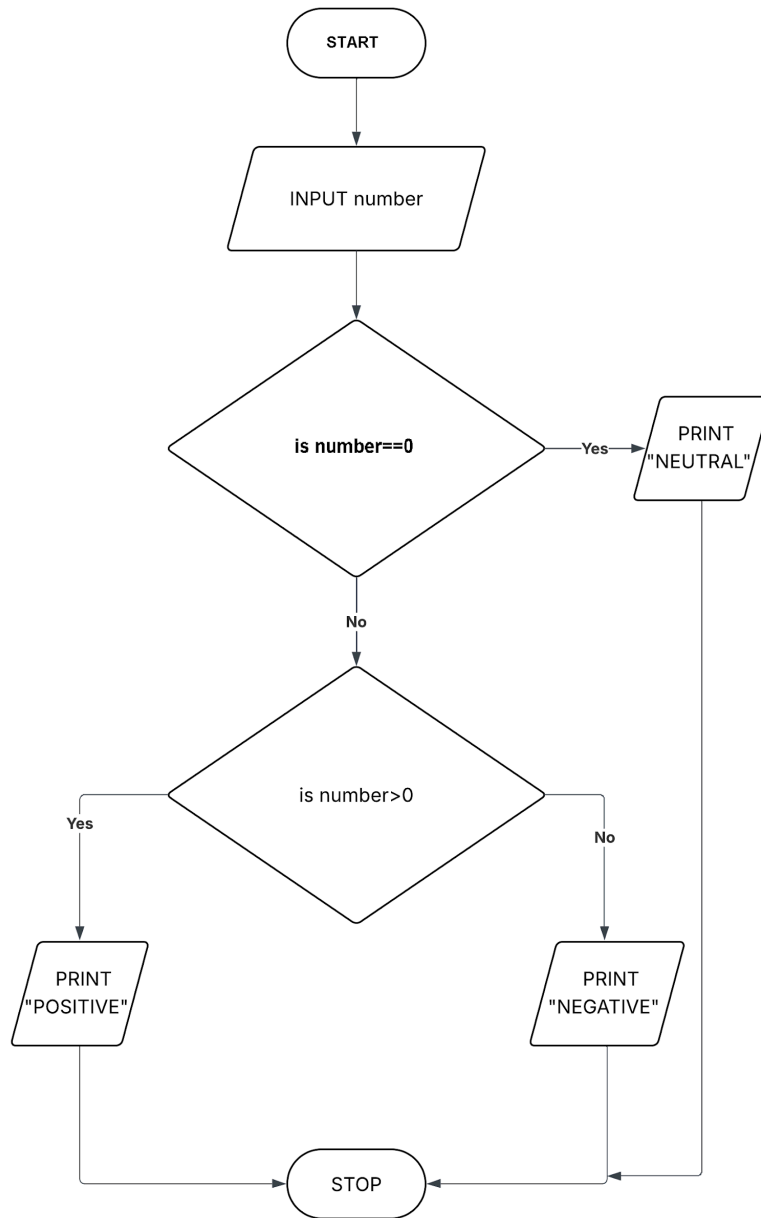
BSIT 1-1

AVERAGE



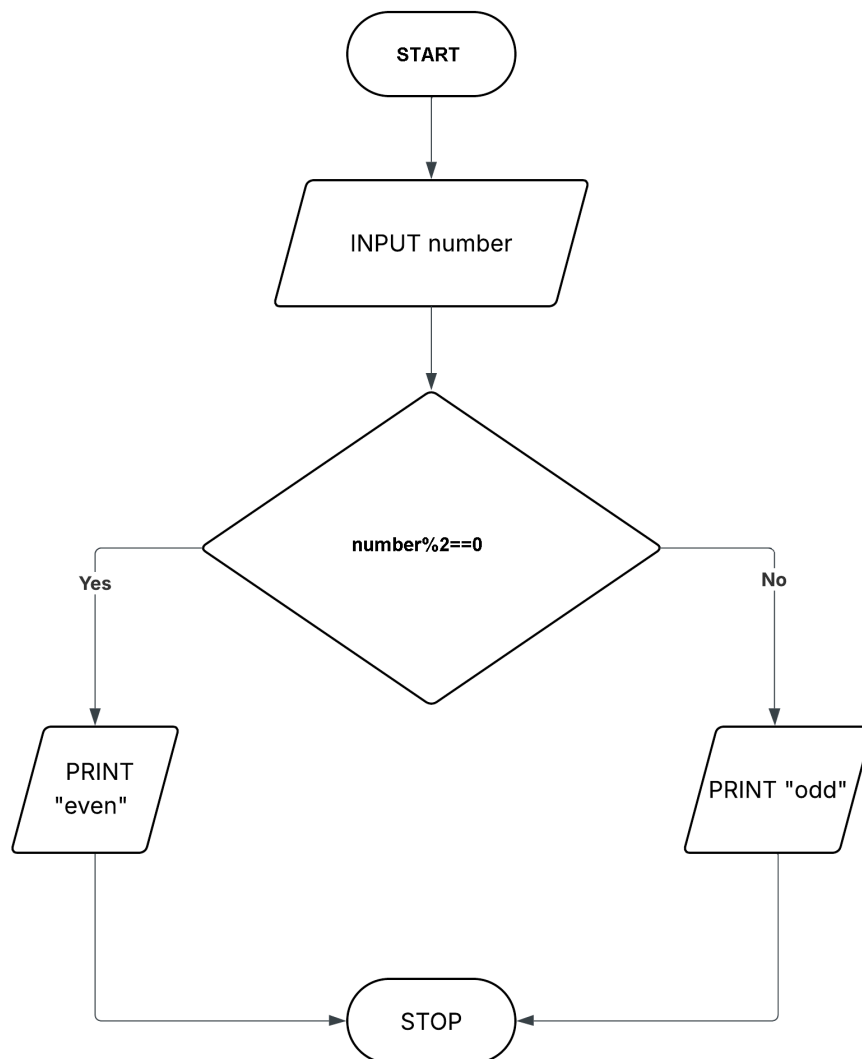
average	average >= 75	Output
74	74 >= 75 = FALSE	FAILED
85	85 >= 75 = TRUE	PASSED

Positive, Negative, or Neutral



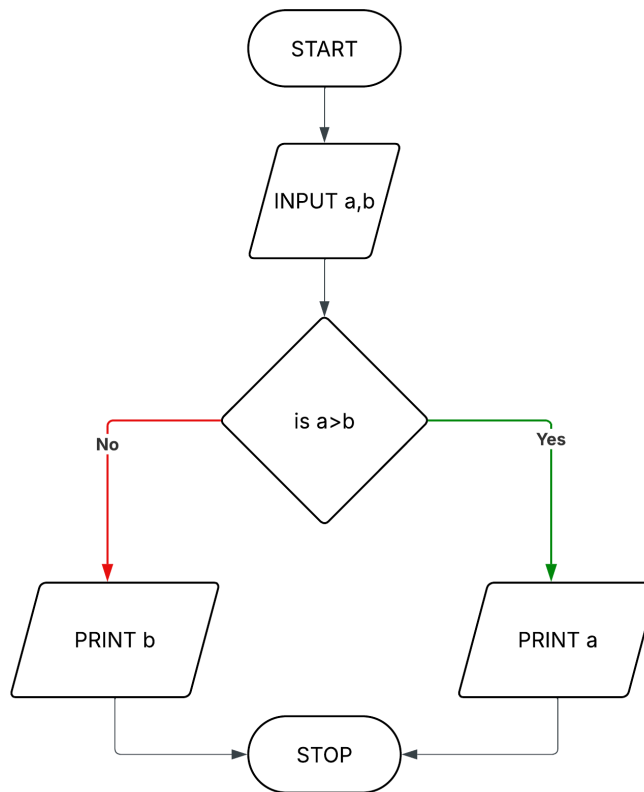
number	number==0	number>0	Output
0	0==0=true		NEUTRAL
-1	-1==0=false	-1>0=false	NEGATIVE
1	1==0=false	1>0=true	POSITIVE

Even or Odd



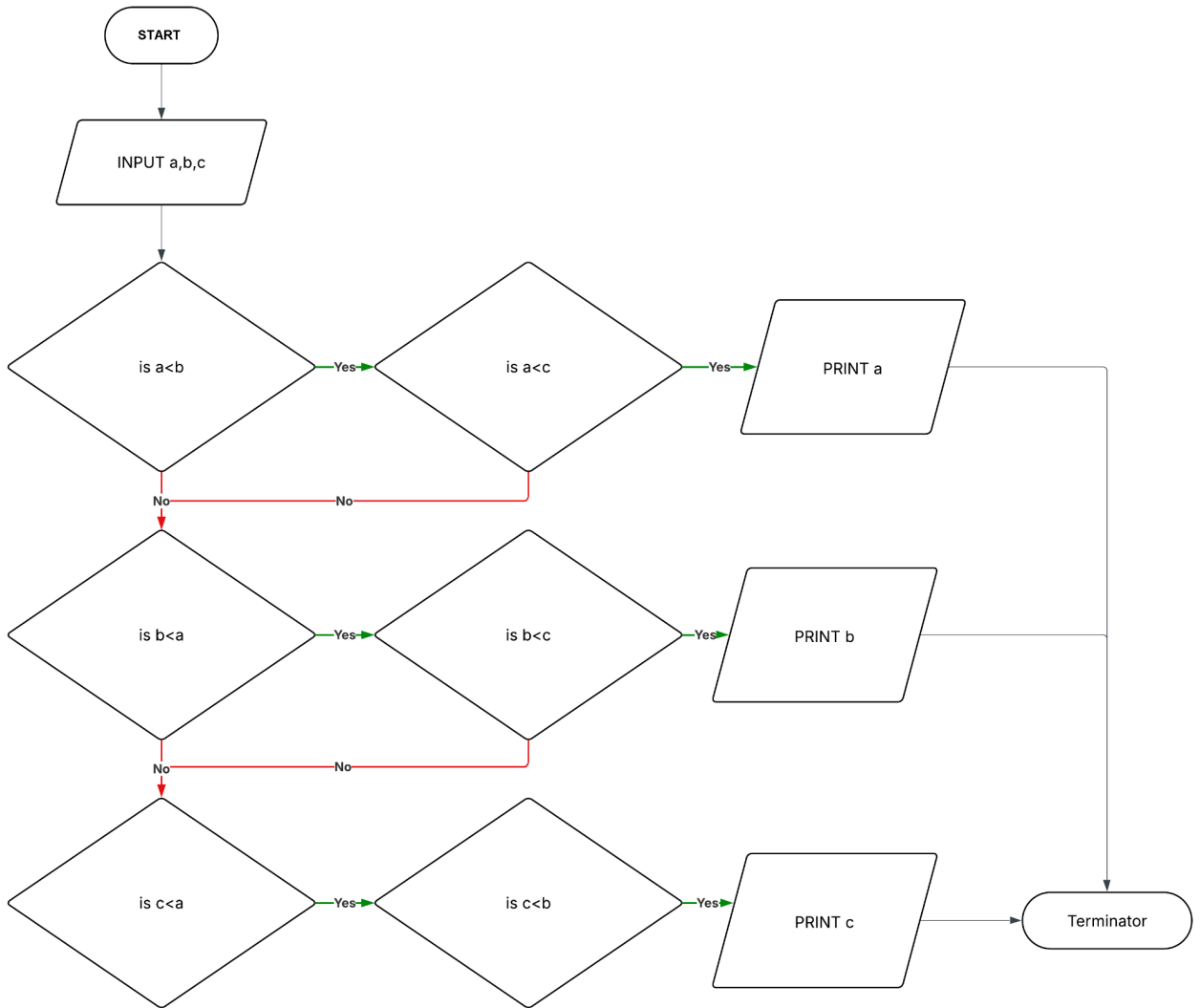
number	$\text{number} \% 2 == 0$	Output
5	$5 \% 2 == 0 = \text{false}$	odd
2	$2 \% 2 == 0 = \text{true}$	even

Larger Number



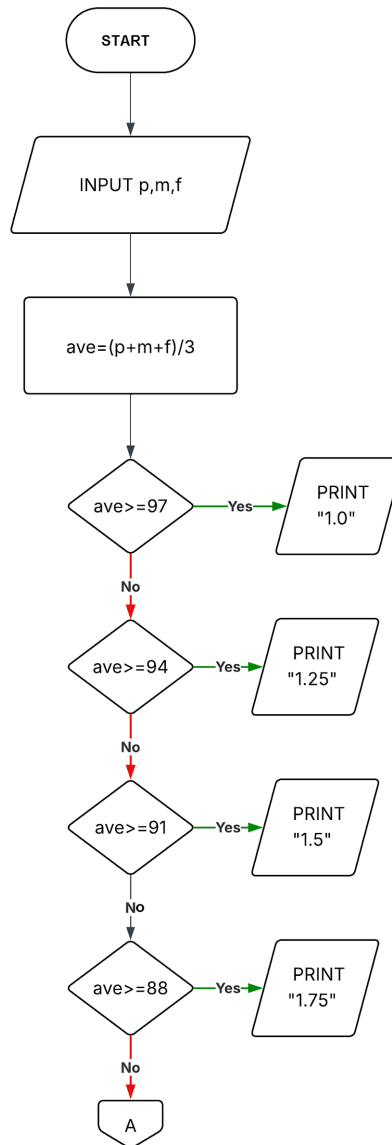
a	b	a>b	Output
3	4	3>4=False	4
4	2	4>2=True	4

Smallest Number

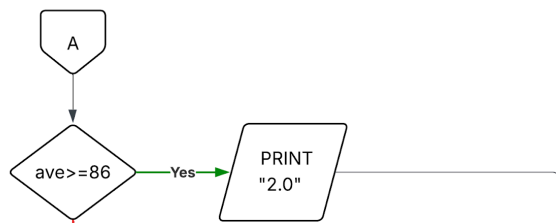


a	b	c	a<b	a<c	b<a	b<c	c<a	c<b	Output
4	5	6	4<5=TRUE	4<6=TRUE					4
5	4	6	5<4=FALSE		4<5=TRUE	4<6=TRUE			4
5	6	4	5<6=TRUE	5<4=FALSE	6<4=FALSE		4<5=TRUE	4<6=TRUE	4

Grading

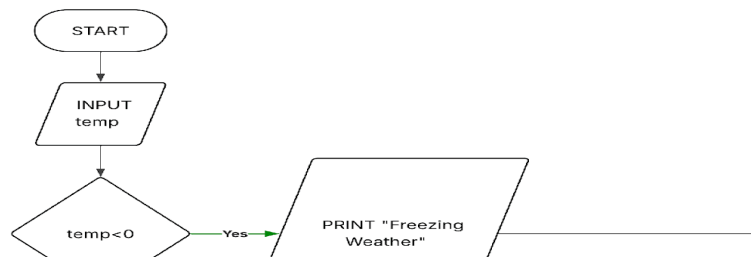


ave	ave ≥ 97	ave ≥ 94	ave ≥ 91	ave ≥ 88	ave ≥ 86	ave ≥ 82	ave ≥ 79	ave ≥ 76	ave ≥ 75	ave < 75	Output
98	98 ≥ 97 = TRUE										1.0
95	95 ≥ 97 = FALSE	95 ≥ 94 = TRUE									1.25
91	91 ≥ 97 = FALSE	91 ≥ 94 = FALSE	91 ≥ 91 = TRUE								1.5
88	88 ≥ 97 = FALSE	88 ≥ 94 = FALSE	88 ≥ 91 = FALSE	88 ≥ 88 = TRUE							1.75
86	86 ≥ 97 = FALSE	86 ≥ 94 = FALSE	86 ≥ 91 = FALSE	86 ≥ 88 = FALSE	86 ≥ 86 = TRUE						2.0
83	83 ≥ 97 = FALSE	83 ≥ 94 = FALSE	83 ≥ 91 = FALSE	83 ≥ 88 = FALSE	83 ≥ 86 = FALSE	83 ≥ 82 = TRUE					2.25
80	80 ≥ 97 = FALSE	80 ≥ 94 = FALSE	80 ≥ 91 = FALSE	80 ≥ 88 = FALSE	80 ≥ 86 = FALSE	80 ≥ 82 = FALSE	80 ≥ 79 = TRUE				2.5
77	77 ≥ 97 = FALSE	77 ≥ 94 = FALSE	77 ≥ 91 = FALSE	77 ≥ 88 = FALSE	77 ≥ 86 = FALSE	77 ≥ 82 = FALSE	77 ≥ 79 = FALSE	77 ≥ 76 = TRUE			2.75
75	75 ≥ 97 = FALSE	75 ≥ 94 = FALSE	75 ≥ 91 = FALSE	75 ≥ 88 = FALSE	75 ≥ 86 = FALSE	75 ≥ 82 = FALSE	75 ≥ 79 = FALSE	75 ≥ 76 = FALSE	75 ≥ 75 = TRUE		3.0
72	72 ≥ 97 = FALSE	72 ≥ 94 = FALSE	72 ≥ 91 = FALSE	72 ≥ 88 = FALSE	72 ≥ 86 = FALSE	72 ≥ 82 = FALSE	72 ≥ 79 = FALSE	72 ≥ 76 = FALSE	72 ≥ 75 = FALSE	72 < 75 = TRUE	5.0

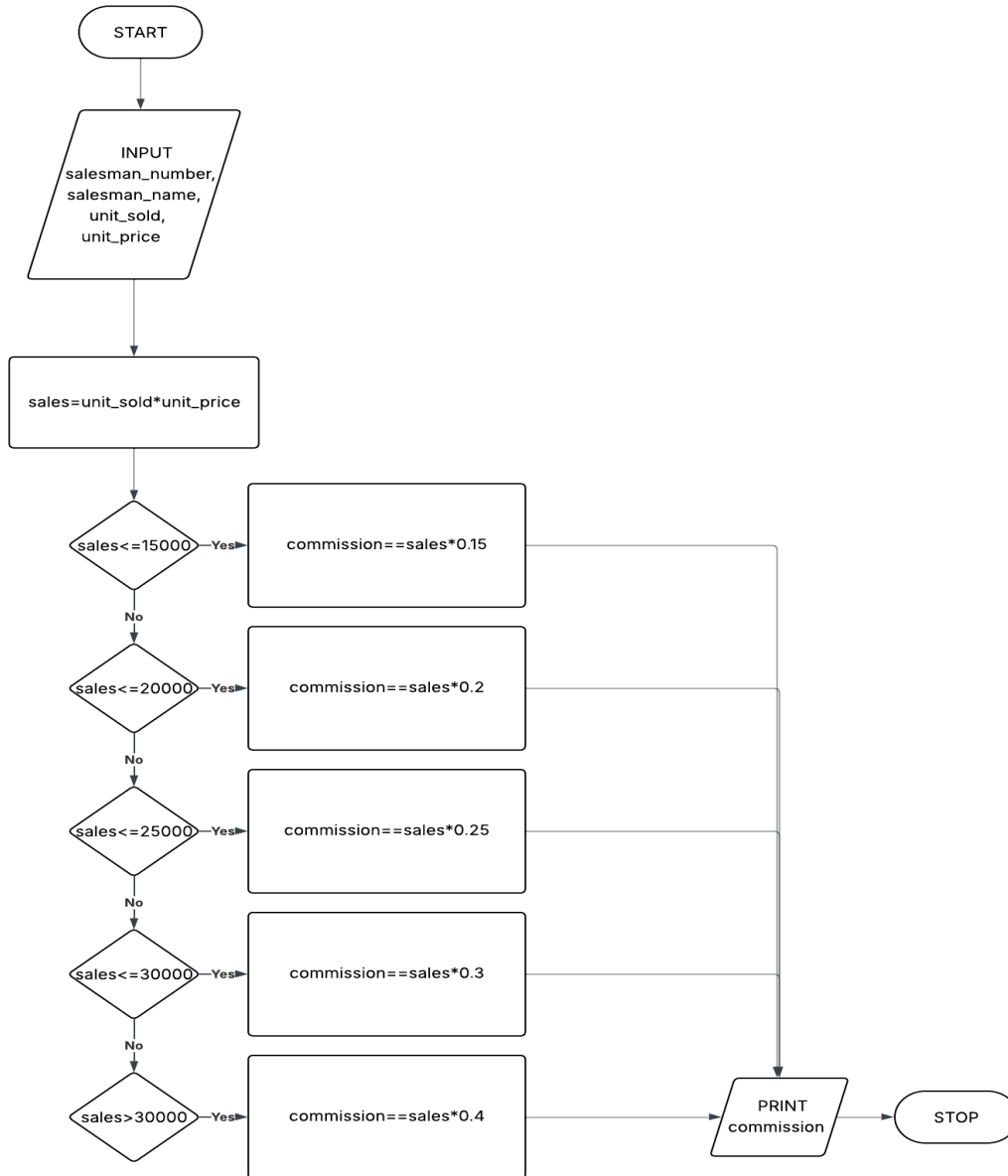


Temperature

temp	temp<0	temp<=10	temp<=20	temp<=30	temp<=40	temp>40	Output
-10	-10<0=true						Freezing Weather
5	5<0=false	5<=10=true					Very Cold Weather
15	15<0=false	15<=10=false	15<=20=true				Cold Weather
25	25<0=false	25<=10=false	25<=20=false	25<=30=true			Normal
35	35<0=false	35<=10=false	35<=20=false	35<=30=false	35<=40=true		Hot
45	45<0=false	45<=10=false	45<=20=false	45<=30=false	45<=40=false	45>40=true	Very Hot

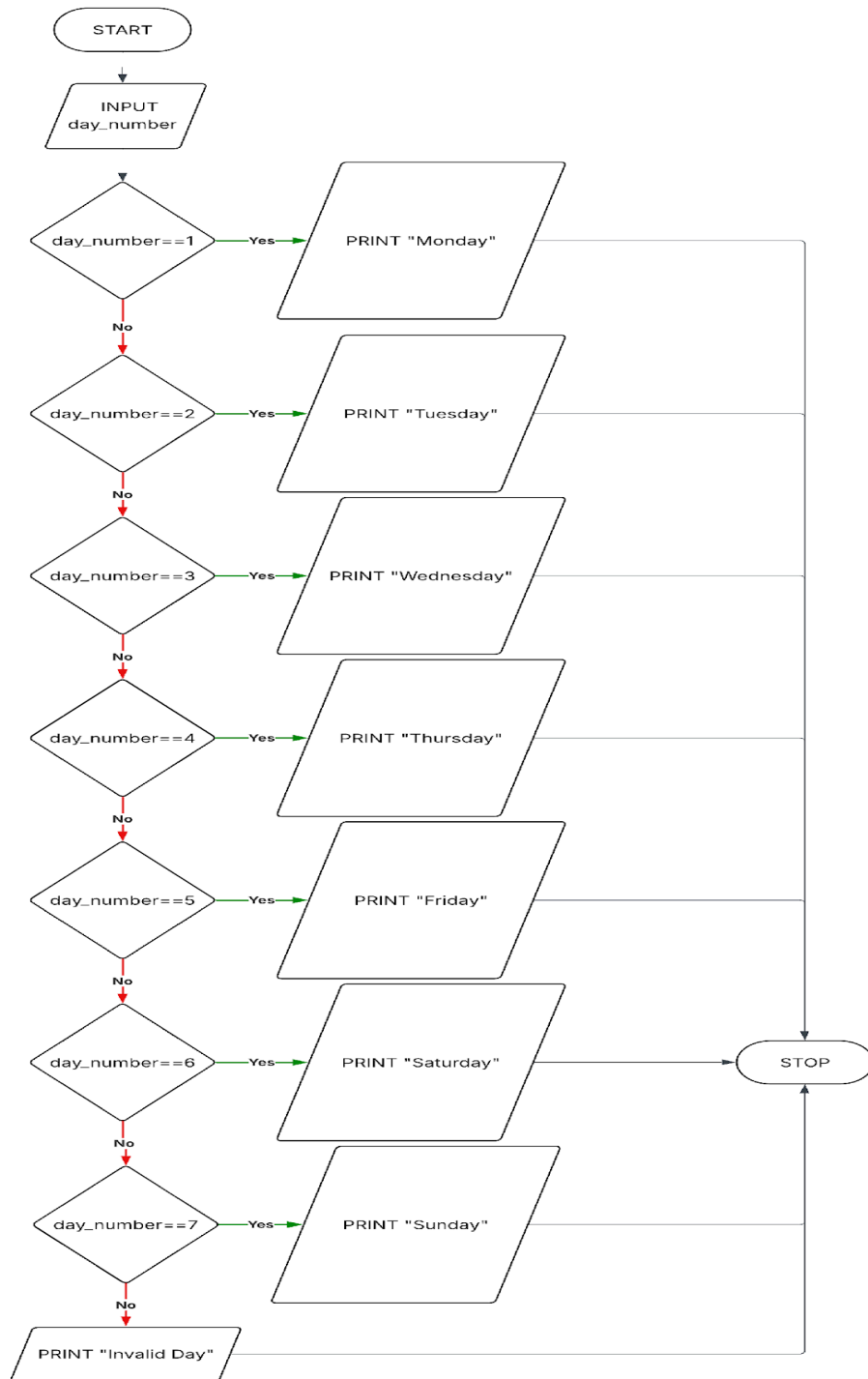


Salesman



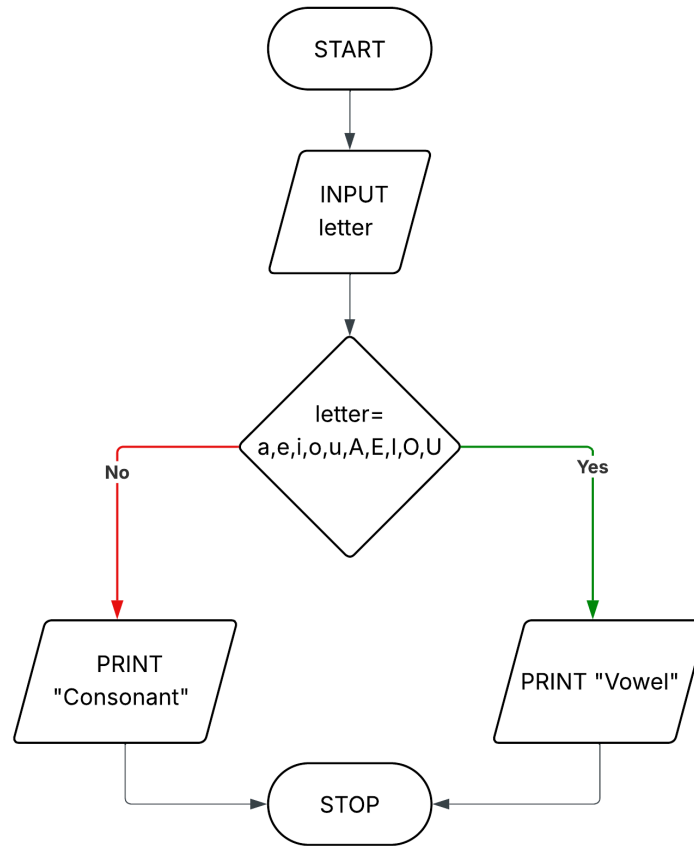
Sales	sales ≤ 15000	sales ≤ 20000	sales ≤ 25000	sales ≤ 30000	sales > 30000	Output
12000	12000 ≤ 15000 = TRUE					1,800
18000	18000 ≤ 15000 = FALSE	18000 ≤ 20000 = TRUE				3,600
23000	23000 ≤ 15000 = FALSE	23000 ≤ 20000 = FALSE	23000 ≤ 25000 = TRUE			5,750
28000	28000 ≤ 15000 = FALSE	28000 ≤ 20000 = FALSE	28000 ≤ 25000 = FALSE	28000 ≤ 30000 = TRUE		8,400
36000	36000 ≤ 15000 = FALSE	36000 ≤ 20000 = FALSE	36000 ≤ 25000 = FALSE	36000 ≤ 30000 = FALSE	36000 > 30000 = TRUE	14,400

Day Name and Day Number



day_number	day_number == 1	day_number == 2	day_number == 3	day_number == 4	day_number == 5	day_number == 6	day_number == 7	Output
1	1 == 1 → TRUE							Monday
2	2 == 1 → FALSE	2 == 2 → TRUE						Tuesday
3	3 == 1 → FALSE	3 == 2 → FALSE	3 == 3 → TRUE					Wednesday
4	4 == 1 → FALSE	4 == 2 → FALSE	4 == 3 → FALSE	4 == 4 → TRUE				Thursday
5	5 == 1 → FALSE	5 == 2 → FALSE	5 == 3 → FALSE	5 == 4 → FALSE	5 == 5 → TRUE			Friday
6	6 == 1 → FALSE	6 == 2 → FALSE	6 == 3 → FALSE	6 == 4 → FALSE	6 == 5 → FALSE	6 == 6 → TRUE		Saturday
7	7 == 1 → FALSE	7 == 2 → FALSE	7 == 3 → FALSE	7 == 4 → FALSE	7 == 5 → FALSE	7 == 6 → FALSE	7 == 7 → TRUE	Sunday
8	8 == 1 → FALSE	8 == 2 → FALSE	8 == 3 → FALSE	8 == 4 → FALSE	8 == 5 → FALSE	8 == 6 → FALSE	8 == 7 → FALSE	Invalid Day

Vowels and Consonants



Letter	letter = a, e, i, o, u, A, E, I, O, U	Output
a	$a \in \{a, e, i, o, u, A, E, I, O, U\} = \text{TRUE}$	Vowel
e	$e \in \{a, e, i, o, u, A, E, I, O, U\} = \text{TRUE}$	Vowel
i	$i \in \{a, e, i, o, u, A, E, I, O, U\} = \text{TRUE}$	Vowel
o	$o \in \{a, e, i, o, u, A, E, I, O, U\} = \text{TRUE}$	Vowel
u	$u \in \{a, e, i, o, u, A, E, I, O, U\} = \text{TRUE}$	Vowel
A	$A \in \{a, e, i, o, u, A, E, I, O, U\} = \text{TRUE}$	Vowel
B	$B \in \{a, e, i, o, u, A, E, I, O, U\} = \text{FALSE}$	Consonant
C	$C \in \{a, e, i, o, u, A, E, I, O, U\} = \text{FALSE}$	Consonant
m	$m \in \{a, e, i, o, u, A, E, I, O, U\} = \text{FALSE}$	Consonant
z	$z \in \{a, e, i, o, u, A, E, I, O, U\} = \text{FALSE}$	Consonant