



2020 Regional Contest Schedule: PSU

Where? Pittsburg State University, 302 East Cleveland, Pittsburg, Kansas 66762

When? Wednesday, Feb. 19, 2020

Who? KSPA students and advisers

PARKING

- Buses and vans may unload students on Cleveland Street. From there students will need to just walk into the Overman Student Center.
- If you arrive by car, you can park in one of the Visitor parking spots on Cleveland St.
- If you receive a parking ticket, let regional coordinator Josh Letner know so he can take care of it.

EATING

- KSPA does not provide food for students participating in the contest. Students should bring cash or credit/debit card to make purchases.
- For lunch, the Gorilla Crossing will be open on the main floor of the Student Center. Lunches run about \$6-\$7 with drinks.
- Also, a snack bar as well as an Einstein Bros. Bagels and a Mexican Grill, will be available at the U-Club in the basement level of the student center.

ADVISERS

- Advisers may gather in the Heritage Room while students are taking the contest for a KSPA meeting. A sign will be posted by the door. Coffee will be available and doughnuts.

ON-SITE CONTESTS

Doors open at 8:30 a.m. with packet pick-up on the 2nd floor of the Overman Student Center

Opening remarks at 9 a.m. Ballroom C on the second floor of Overman Student Center

SESSION 1: 9:30 a.m. - 11 a.m.

Contest A:

Copy Editing: Kansas 2

Contest B:

Sports Writing: Kansas 1

Contest C:

Editorial Cartoon: Cottonwood

Contest D:

Yearbook Copy Writing: Kansas 3

Contest E:

Feature Writing: Kansas 4

SESSION 2: 11:10 a.m. - 12:40 p.m.

Contest F:

News Writing: Kansas 1

Contest G:

Outline Writing: Kansas 2

Contest H:

Editorial Writing: Kansas 3

Contest J:

Yearbook Sports Writing: Kansas 4

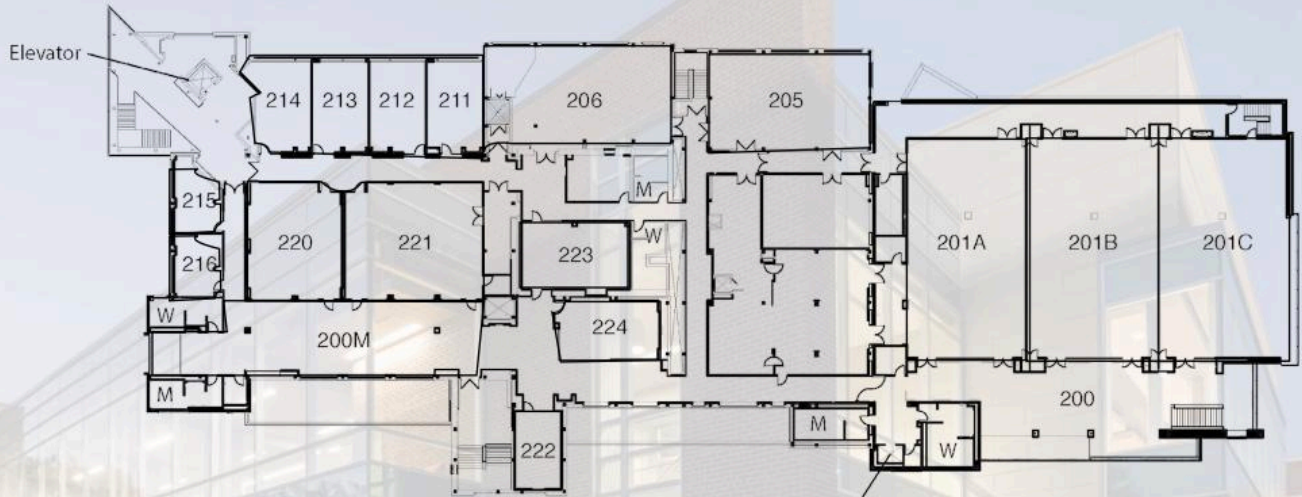
DIGITAL SUBMISSION CONTESTS

The deadline for digital entries was **11 p.m. on Feb. 13.**

All contests have been closed and judged at this time. No late submissions will be allowed.

QUESTIONS?

- **IN ADVANCE:** about registration or payment?
 - **Kerry Navinskey**, (785) 864-0605
staff@kspaonline.org
- **ON-SITE QUESTIONS:** See contest coordinator Josh Letner on the day of the contest or at jbletner@pittstate.edu



Balkans	224
C&G Lounge	200
Cottonwood Room	222
Crimson & Gold Ballroom A	201A
Crimson & Gold Ballroom A	201B
Crimson & Gold Ballroom A	201C
Heritage Lounge	205
Governor's Room	206
Kansas 1	214
Kansas 1	213
Kansas 1	212
Kansas 1	211
Meadowlark Room	220
Prairie Room	223
Sunflower Room	221
Sunset A	216
Sunset B	215
SW Lounge	200M

Elevator

Second Level