

*\*(This document is an active work in progress)\**

# Native Plants

Gardens, Yards, Landscaping & Restoration Efforts

~ Washtenaw County, MI ~

Eco-region 6a = 56h-55a-57a-57b

The best tool available for learning about all the plants of Michigan, is <https://www.michiganflora.net/search>

*The soil acidity in Washtenaw County  
ranges from slightly alkaline, to slightly acidic varying by location.*

*These soil types include:*

- *CLAYEY SOILS*
- *LOAMY SOILS*
- *WET LOAMY SOILS*
- *LOAMY SOILS UNDERLAIN BY SAND & GRAVEL*
- *WET SANDY & WET LOAMY SOILS UNDERLAIN BY SAND AND GRAVEL*

*SOUTHEAST MICHIGAN  
NATURAL COMMUNITIES*

- 1.) Wetland Species**
- 2.) Mesic Prairie Species**
- 3.) Dry/Sandy Species**
- 4.) Woodland Species**
- 5.) Shady Lowland Species**

**Native Nurseries Nearby**

**Sources: (Worth Exploring!)**

*\*Interesting Maps\**

*“We are amidst the largest period of species extinction in the last 60 million years. Normally, between one and five species will go extinct annually. However, scientists estimate that we are now losing species at 1,000 to 10,000 times the normal rate, with multiple extinctions daily.”*

*A keystone species is an organism that helps hold the system together. Without its keystone species, ecosystems would look very different. Some ecosystems might not be able to adapt to environmental changes if their keystone species disappeared. That could spell the end of the ecosystem, or it could allow an invasive species to take over and dramatically shift the ecosystem in a new direction.*

---

## Symbol Key:

(Everything underlined has a directory link)

• = Flower Color

x = Native plant that *may* not naturally occur in Washtenaw County but thrives in Horticulture

\* Host Plant

\* Keystone Species

\* Threatened or Endangered

\* Edible or medicinal (Always do thorough research before consuming anything you're not completely familiar with already; Some plants need specific processes to be made non-toxic or only certain parts of the plant can be used as a topical medicine but cannot be ingested, etc.)

---

# 1.) Wetland Species

## x **FLOWERS:**

• Tall Agrimony ([Agrimonia gryposepala](#))\*

• Swamp Agrimony ([Agrimonia parviflora](#))\*

Tall Thimbleweed ([Anemone virginiana](#))\*

• Angelica ([Angelica atropurpurea](#))\*

Hairy Angelica ([Angelica venenosa](#))\*

• Swamp Milkweed ([Asclepias incarnata](#))\*\*

- Marsh Bellflower ([\*Campanula aparinoides\*](#))\*
- Harebell ([\*Campanula rotundifolia\*](#))\*
- American Bellflower ([\*Campanulastrum americanum\*](#))\*
- White Turtle Head ([\*Chelone glabra\*](#))\*
- Pink Turtlehead ([\*Chelone obliqua\*](#))\*\*
- Bulb-bearing Water Hemlock ([\*Cicuta bulbifera\*](#))\*
- Spotted Water Hemlock ([\*Cicuta maculata\*](#))\*
- Swamp Thistle ([\*Cirsium muticum\*](#))\*\*
- xBlue Mistflower ([\*Conoclinium coelestinum\*](#))\*\*
- Common Boneset ([\*Eupatorium perfoliatum\*](#))\*\*
- Hollow Joe-Pye-Weed ([\*Eutrochium fistulosum\*](#))\*\*
- Spotted Joe-Pye-Weed ([\*Eutrochium maculatum\*](#))\*\*
- Sweet Joe-Pye-Weed ([\*Eutrochium purpureum\*](#))\*\*
- Bottle Gentian ([\*Gentiana andrewsii\*](#))\*
- Soapwort Gentian ([\*Gentiana saponaria\*](#))\*
- Fringed Gentian ([\*Gentianopsis crinita\*](#))\*
- Small Fringed Gentian ([\*Gentianopsis virgata\*](#))\*
- Yellow Avens ([\*Geum aleppicum\*](#))\*
- Rough Avens ([\*Geum laciniatum\*](#))\*
- Purple Avens ([\*Geum rivale\*](#))\*
- xSwamp Sunflower ([\*Helianthus angustifolius\*](#))\*\*
- Tall Sunflower ([\*Helianthus giganteus\*](#))\*\*

- Sawtooth Sunflower ([\*Helianthus grosseserratus\*](#))\*\*
- Dwarf Lake Iris ([\*Iris lacustris\*](#))\*\*
- Northern Blue Flag ([\*Iris versicolor\*](#))\*
- Marsh Blazing-star ([\*Liatris spicata\*](#))\*\*
- Michigan Lilly ([\*Lilium michiganense\*](#))\*
- Cardinal Flower ([\*Lobelia cardinalis\*](#))\*\*\*
- Puke Weed ([\*Lobelia inflata\*](#))\*\*
- Brook Lobelia ([\*Lobelia kalmii\*](#))
- Blue Lobelia ([\*Lobelia siphilitica\*](#))\*
- Pale Spiked Lobelia ([\*Lobelia spicata\*](#))\*
- White Bergamot ([\*Monarda clinopodia\*](#))\*\*
- Scarlet Bee-Balm ([\*Monarda didyma\*](#))\*\*
- Golden Ragwort ([\*Packera aurea\*](#))\*\*
- Balsam Ragwort ([\*Packera paupercula\*](#))\*
- Swamp Betony ([\*Pedicularis lanceolata\*](#))\*
- Slender Mountain Mint ([\*Pycnanthemum tenuifolium\*](#))\*\*
- Virginia Mountain Mint ([\*Pycnanthemum virginianum\*](#))\*\*
- Orange Coneflower ([\*Rudbeckia fulgida\*](#))\*\*
- Black-eyed Susan ([\*Rudbeckia hirta\*](#))\*\*
- Cut-leaf Coneflower ([\*Rudbeckia laciniata\*](#))\*\*
- Three-lobed Coneflower ([\*Rudbeckia triloba\*](#))\*\*
- Lizard's Tail ([\*Saururus cernuus\*](#))\*

- Marsh Skullcap ([\*Scutellaria galericulata\*](#))\*
- Mad-dog Skullcap ([\*Scutellaria lateriflora\*](#))\*
- Swamp Goldenrod ([\*Solidago patula\*](#))\*\*
- Canada Goldenrod ([\*Solidago canadensis\*](#))\*\*
- Round-leaf Goldenrod ([\*Solidago patula\*](#))\*\*
- Bog Goldenrod ([\*Solidago uliginosa\*](#))\*\*
- Rush Aster ([\*Symphotrichum boreale\*](#))\*\*
- Bushy Aster ([\*Symphotrichum dumosum\*](#))\*\*
- White Heath Aster ([\*Symphotrichum ericoides\*](#))\*\*
- Smooth Swamp Aster ([\*Symphotrichum firmum\*](#))\*\*
- Panicked Aster ([\*Symphotrichum lanceolatum\*](#))\*\*
- Side-flowering Aster ([\*Symphotrichum lateriflorum\*](#))\*\*
- New England Aster ([\*Symphotrichum novae-angliae\*](#))\*\*
- Lake Ontario Aster ([\*Symphotrichum ontarionis\*](#))\*\*
- Willow Aster ([\*Symphotrichum praealtum\*](#))\*\*
- Swamp Aster ([\*Symphotrichum puniceum\*](#))\*\*
- Long-leaved Aster ([\*Symphotrichum robynsonianum\*](#))\*\*
- Purple Meadow-rue ([\*Thalictrum dasycarpum\*](#))\*
- Common Spiderwort ([\*Tradescantia virginiana\*](#))
- Marsh St. John's-wort ([\*Triadenum fraseri\*](#))
- Virginia Marsh St. John's-wort ([\*Triadenum virginicum\*](#))
- Blue Vervain ([\*Verbena hastata\*](#))\*\*

White Vervain ([\*Verbena urticifolia\*](#))\*

- Wingstem ([\*Verbesina alternifolia\*](#))\*\*
- Prairie Ironweed ([\*Vernonia fasciculata\*](#))\*\*
- Tall Ironweed ([\*Vernonia gigantea\*](#))\*\*
- Missouri Ironweed ([\*Vernonia missurica\*](#))\*\*
- Culver's Root ([\*Veronicastrum virginicum\*](#))\*\*\*

## × **GRAMINOIDS:**

- Sweet Flag ([\*Acorus americanus\*](#))
- Sweetgrass ([\*Anthoxanthum hirtum\*](#))\*
- Fringed Brome ([\*Bromus ciliatus\*](#))\*\*
- Prairie Brome ([\*Bromus kalmii\*](#))\*
- Blue-joint ([\*Calamagrostis canadensis\*](#))\*\*
- Narrow-leaved Reed Grass ([\*Calamagrostis stricta\*](#))\*\*\*
- Winged Sedge ([\*Carex alata\*](#))\*
- Yellow-fruit Sedge ([\*Carex annectens\*](#))\*
- Aqua Sedge ([\*Carex aquatilis\*](#))\*\*
- Wheat Sedge ([\*Carex atherodes\*](#))
- Golden Sedge ([\*Carex aurea\*](#))\*
- Common Wood Sedge ([\*Carex blanda\*](#))\*\*
- Fringed Sedge ([\*Carex crinita\*](#))\*\*

- xRaven's Foot Sedge ([\*Carex crus-corvi\*](#))\*\*\*
- Hop Sedge ([\*Carex lupulina\*](#))\*\*
- xBlack Sedge ([\*Carex nigra\*](#))\*\*
- Fox Sedge ([\*Carex vulpinoidea\*](#))\*\*
- xWild Oats ([\*Chasmanthium latifolium\*](#))\*\*\*
- Twig-rush ([\*Cladium mariscoides\*](#))\*
- Umbrella Flatsedge ([\*Cyperus diandrus\*](#))\*
- Yellow Flatsedge ([\*Cyperus flavescens\*](#))\*\*\*
- Fragrant Flatsedge ([\*Cyperus odoratus\*](#))\*\*
- Long Scaled Nutsedge ([\*Cyperus strigosus\*](#))\*
- Leiberg's Rosette Grass ([\*Dichantheium leibergii\*](#))\*\*
- Three-way Sedge ([\*Dulichium arundinaceum\*](#))\*
- Narrow-leaved Cotton-grass ([\*Eriophorum angustifolium\*](#))\*
- Green-keeled Cotton-grass ([\*Eriophorum viridicarinatum\*](#))\*
- Witchgrass ([\*Panicum capillare\*](#))\*
- Wiry Panic Grass ([\*Panicum flexile\*](#))\*
- Switch Grass ([\*Panicum virgatum\*](#))\*\*
- Hardstem Bulrush ([\*Schoenoplectus acutus\*](#))\*
- Threesquare ([\*Schoenoplectus pungens\*](#))
- Wool-Grass ([\*Scirpus cyperinus\*](#))\*\*
- Stalked Wool-grass ([\*Scirpus pedicellatus\*](#))\*
- Nodding Bulrush ([\*Scirpus pendulus\*](#))\*\*

- Prairie Cordgrass ([Spartina pectinata](#))<sup>\*\*</sup>

## × **GROUNDCOVERS:**

Canada Anemone ([Anemone canadensis](#))<sup>\*</sup>

- xGreen-and-Gold ([Chrysogonum virginianum](#))<sup>\*</sup>

Bunchberry ([Cornus canadensis](#))<sup>\*</sup>

Woodland Strawberry ([Fragaria vesca](#))<sup>\*\*</sup>

Wild Strawberry ([Fragaria virginiana](#))<sup>\*\*</sup>

- Wild Geranium ([Geranium maculatum](#))<sup>\*\*</sup>

Common Water Horehound ([Lycopus americanus](#))<sup>\*</sup>

Stalked Water Horehound ([Lycopus rubellus](#))

- Northern Bugleweed ([Lycopus uniflorus](#))<sup>\*</sup>

- Common Self-heal ([Prunella vulgaris](#))<sup>\*\*</sup>

- xLyreleaf Sage ([Salvia lyrata](#))<sup>\*\*</sup>

- Common Blue Violet ([Viola sororia](#))<sup>\*\*\*</sup>

## × **FERNS:**

- Lady Fern ([Athyrium filix-femina](#))

- Least Moonwort ([Botrychium simplex](#))

- Shade Moonwort ([Botrychium tenebrosum](#))

- Interrupted Fern ([\*Claytosmunda claytoniana\*](#))
- Crested Shield Fern ([\*Dryopteris cristata\*](#))
- Sensitive Fern ([\*Onoclea sensibilis\*](#))
- Northern Adder's Tongue ([\*Ophioglossum pusillum\*](#))
- Marsh Fern ([\*Thelypteris palustris\*](#))
- Virginia Chain-fern ([\*Woodwardia virginica\*](#))

## × **SHRUBS:**

- Bog Birch ([\*Betula pumila\*](#))\*
- Button Bush ([\*Cephalanthus occidentalis\*](#))\*\*
- Silky Dogwood ([\*Cornus amomum\*](#))\*\*
- Swamp Dogwood ([\*Cornus foemina\*](#))\*\*
- Red-osier Dogwood ([\*Cornus sericea\*](#))\*\*
- American Hazelnut ([\*Corylus americana\*](#)\*\*\*)
- Shrubby Cinquefoil ([\*Dasiphora fruticosa\*](#))\*
- xSmooth Rose Mallow ([\*Hibiscus laevis\*](#))\*\*
- Swamp Rose Mallow ([\*Hibiscus moscheutos\*](#)\*\*\*)
- Swamp Rose ([\*Rosa palustris\*](#))\*\*
- Bebb's Willow ([\*Salix bebbiana\*](#))\*\*
- Sage Willow ([\*Salix candida\*](#))\*\*
- Missouri River Willow ([\*Salix eriocephala\*](#))\*\*
- Prairie Willow ([\*Salix humilis\*](#))\*\*

- Shining Willow ([Salix lucida](#))\*\*
- Slender Willow ([Salix petiolaris](#))\*\*
- Silky Willow ([Salix sericea](#))\*\*
- Autumn Willow ([Salix serissima](#))\*\*
- Common Elderberry ([Sambucus canadensis](#))\*\*\*
- American Senna ([Senna hebecarpa](#))\*\*\*

## × TREES:

- Juneberry ([Amelanchier arborea](#))\*\*\*
- Shadbush Serviceberry ([Amelanchier spicata](#))\*\*\*
- Murray Birch ([Betula murrayana](#))\*\*
- xRiver Birch ([Betula nigra](#))\*\*
- Tamarack ([Larix laricina](#))\*\*
- Black Gum ([Nyssa sylvatica](#))\*\*
- Balsam Poplar ([Populus balsamifera](#))\*\*
- Eastern Cottonwood ([Populus deltoides](#))\*\*
- Swamp Cottonwood ([Populus heterophylla](#))\*\*
- Quaking Aspen ([Populus tremuloides](#))\*\*
- Swamp White Oak ([Quercus bicolor](#))\*\*
- Pin Oak ([Quercus palustris](#))\*\*
- Shumard Oak ([Quercus shumardii](#))\*\*
- Peach-leaved Willow ([Salix amygdaloides](#))\*\*

- American Glaucous Willow ([Salix discolor](#))\*\*
  - Black Willow ([Salix nigra](#))\*\*
  - Silky Willow ([Salix sericea](#))\*\*
  - xBald Cypress ([Taxodium distichum](#))\*\*
- 

## 2.) Mesic Prairie Species

### x FLOWERS:

- Tall Agrimony ([Agrimonia gryposepala](#))\*
- Swamp Agrimony ([Agrimonia parviflora](#))\*
- Roadside Agrimony ([Agrimonia striata](#))\*
- Canada Anemone ([Anemone canadensis](#))\*
- Thimbleweed ([Anemone cylindrica](#))\*
- Tall Thimbleweed ([Anemone virginiana](#))\*
- Hairy Angelica ([Angelica venenosa](#))\*
- Pale Native Plantain ([Arnoglossum atriplicifolium](#))\*
- Tuberous Prairie Plantain ([Arnoglossum plantagineum](#))\*
- Butterfly Weed ([Asclepias tuberosa](#))\*\*

- Clasping Milkweed ([Asclepias amplexicaulis](#))<sup>\*\*</sup>
- Tall Green Milkweed ([Asclepias hirtella](#))<sup>\*\*\*</sup>
- Purple Milkweed ([Asclepias purpurascens](#))<sup>\*\*\*</sup>
- Smooth Milkweed ([Asclepias sullivantii](#))<sup>\*\*\*</sup>
- Common Milkweed ([Asclepias syriaca](#))<sup>\*\*</sup>
- Whorled Milkweed ([Asclepias verticillata](#))<sup>\*\*</sup>
- Green Milkweed ([Asclepias viridiflora](#))<sup>\*\*</sup>
- Blue False Indigo ([Baptisia australis](#))<sup>\*\*</sup>
- White False Indigo ([Baptisia lactea](#))<sup>\*\*</sup>
- xCreamy False Indigo ([Baptisia leucophaea](#))<sup>\*\*\*</sup>
- Wild False Indigo ([Baptisia tinctoria](#))<sup>\*</sup>
- Harebell ([Campanula rotundifolia](#))<sup>\*</sup>
- American Bellflower ([Campanulastrum americanum](#))<sup>\*</sup>
- Pasture Thistle ([Cirsium discolor](#))<sup>\*\*</sup>
- Hill's Thistle ([Cirsium hillii](#))<sup>\*\*</sup>
- xPrairie Coreopsis ([Coreopsis palmata](#))<sup>\*\*</sup>
- Tall Coreopsis ([Coreopsis tripteris](#))<sup>\*\*</sup>
- Showy Tick-trefoil ([Desmodium canadense](#))<sup>\*</sup>
- Hoary Tick-trefoil ([Desmodium canescens](#))<sup>\*</sup>
- Large Bract Tick-trefoil ([Desmodium cuspidatum](#))<sup>\*</sup>
- Panicked Tick-trefoil ([Desmodium paniculatum](#))<sup>\*</sup>
- Perplexed Tick-trefoil ([Desmodium perplexum](#))<sup>\*</sup>

- Sessile-leaf Tick-trefoil ([\*Desmodium sessilifolium\*](#))\*
- xPurple Coneflower ([\*Echinacea purpurea\*](#))\*\*
- xRattlesnake-master ([\*Eryngium yuccifolium\*](#))\*\*
- Tall Boneset ([\*Eupatorium altissimum\*](#))\*\*
- Common Boneset ([\*Eupatorium perfoliatum\*](#))\*\*
- Upland Boneset ([\*Eupatorium sessilifolium\*](#))\*\*
- xTinted Spurge ([\*Euphorbia commutata\*](#))\*
- Flowering Spurge ([\*Euphorbia corollata\*](#))\*
- Eyebane ([\*Euphorbia nutans\*](#))
- xAmerican Columbo ([\*Frasera caroliniensis\*](#))\*
- xNative Blanket Flower ([\*Gaillardia pulchella\*](#))
- Yellowish Gentian ([\*Gentiana alba\*](#))\*\*
- Prairie Gentian ([\*Gentiana puberulenta\*](#))\*\*
- Soapwort Gentian ([\*Gentiana saponaria\*](#))
- Stiff Gentian ([\*Gentianella quinquefolia\*](#))\*
- Purple Avens ([\*Geum rivale\*](#))\*
- Pale Avens ([\*Geum virginianum\*](#))\*
- Common Sunflower ([\*Helianthus annuus\*](#))\*\*
- Cucumber-leaf Sunflower ([\*Helianthus debilis\*](#))\*\*
- Pale Sunflower ([\*Helianthus decapetalus\*](#))\*\*
- Tall Sunflower ([\*Helianthus giganteus\*](#))\*\*
- Sawtooth Sunflower ([\*Helianthus grosseserratus\*](#))\*\*

- Hairy Sunflower ([\*Helianthus hirsutus\*](#))\*\*
  - Maximilian Sunflower ([\*Helianthus maximiliani\*](#))\*\*
  - xAshy Sunflower ([\*Helianthus mollis\*](#))\*\*
  - Western Sunflower ([\*Helianthus occidentalis\*](#))\*\*
  - Stiff Sunflower ([\*Helianthus pauciflorus\*](#))\*\*
  - Prairie Sunflower ([\*Helianthus petiolaris\*](#))\*\*
  - Pale-leaf Sunflower ([\*Helianthus strumosus\*](#))\*
  - Jerusalem Artichoke ([\*Helianthus tuberosus\*](#))\*\*
  - False Sunflower ([\*Heliopsis helianthoides\*](#))\*\*
  - Tall Lettuce ([\*Lactuca canadensis\*](#))\*\*
  - Woodland Lettuce ([\*Lactuca floridana\*](#))\*\*
  - Round-headed Bush-clover ([\*Lespedeza capitata\*](#))\*
  - Violet Bush-clover ([\*Lespedeza frutescens\*](#))\*
  - Hairy Bush-clover ([\*Lespedeza hirta\*](#))\*
  - Marsh Blazing-star ([\*Liatris spicata\*](#))\*\*
  - Puke Weed ([\*Lobelia inflata\*](#))\*\*
  - Pale Spiked Lobelia ([\*Lobelia spicata\*](#))\*
  - Scarlet Bee-Balm ([\*Monarda didyma\*](#))\*\*
  - Wild Bergamot ([\*Monarda fistulosa\*](#))\*\*
  - Prairie Phlox ([\*Phlox pilosa\*](#))\*
  - Obedient Plant ([\*Physostegia virginiana\*](#))\*
- Slender Mountain Mint ([\*Pycnanthemum tenuifolium\*](#))\*\*

Virginia Mountain Mint ([\*Pycnanthemum virginianum\*](#))\*\*

- xUpright Prairie Coneflower ([\*Ratibida columnifera\*](#))\*
- Yellow Coneflower ([\*Ratibida pinnata\*](#))\*
- Orange Coneflower ([\*Rudbeckia fulgida\*](#))\*\*
- Black-eyed Susan ([\*Rudbeckia hirta\*](#))\*\*
- Rosin Weed ([\*Silphium integrifolium\*](#)\*\*\*)
- Compass Plant ([\*Silphium laciniatum\*](#))\*\*
- Cup Plant ([\*Silphium perfoliatum\*](#))\*\*
- Prairie Dock ([\*Silphium terebinthinaceum\*](#))\*\*
- Tall Goldenrod ([\*Solidago altissima\*](#))\*\*
- Silver-rod ([\*Solidago bicolor\*](#)\*\*\*)
- Blue-stemmed Goldenrod ([\*Solidago caesia\*](#))\*\*
- Canada Goldenrod ([\*Solidago canadensis\*](#))\*\*
- Gray Goldenrod ([\*Solidago nemoralis\*](#))\*\*
- Stiff Goldenrod ([\*Solidago rigida\*](#))\*\*
- Rough Stemmed Goldenrod ([\*Solidago rugosa\*](#))\*\*
- Showy Goldenrod ([\*Solidago speciosa\*](#))\*\*
- Blue-wood Aster ([\*Symphotrichum cordifolium\*](#))\*\*
- White Prairie Aster ([\*Symphotrichum ericoides\*](#))\*\*
- Smooth Aster ([\*Symphotrichum laeve\*](#))\*\*
- New England Aster ([\*Symphotrichum novae-angliae\*](#))\*\*
- Prairie Heart-leaved Aster ([\*Symphotrichum oolentangiense\*](#))\*\*

Frost Aster ([\*Symphotrichum pilosum\*](#))\*\*

- Short's Aster ([\*Symphotrichum shortii\*](#))\*\*
- Yellow-Pimpernel ([\*Taenidia integerrima\*](#))\*
- Purple Meadow-rue ([\*Thalictrum dasycarpum\*](#))\*
- Common Spiderwort ([\*Tradescantia ohioensis\*](#))\*
- Virginia Spiderwort ([\*Tradescantia virginiana\*](#))
- Prairie Ironweed ([\*Vernonia fasciculata\*](#))\*\*
- Tall Ironweed ([\*Vernonia gigantea\*](#))\*\*
- xMissouri Ironweed ([\*Vernonia missurica\*](#))\*\*
- xNew York Ironweed ([\*Vernonia noveboracensis\*](#))\*\*

Culver's Root ([\*Veronicastrum virginicum\*](#))\*

- Golden Alexanders ([\*Zizia aurea\*](#))\*

## × GRAMINOIDS:

- Autumn Bent ([\*Agrostis perennans\*](#))\*
- Ticklegrass ([\*Agrostis scabra\*](#))\*
- Big Bluestem ([\*Andropogon gerardii\*](#))\*\*
- Sweetgrass ([\*Anthoxanthum hirtum\*](#))\*
- Bicknell's Sedge ([\*Carex bicknellii\*](#))\*\*
- Common Wood Sedge ([\*Carex blanda\*](#))\*\*
- Prairie Sedge ([\*Carex prairea\*](#))\*
- Brown Fox Sedge ([\*Carex vulpinoidea\*](#))\*

- Wood Reed Grass ([\*Cinna arundinacea\*](#))\*
- Leiberg's Panic Grass ([\*Dichanthelium leibergii\*](#))\*\*
- Panic Grass ([\*Dichanthelium oligosanthes\*](#))\*\*
- Porcupine Grass ([\*Hesperostipa spartea\*](#))\*
- Switchgrass ([\*Panicum virgatum\*](#))\*\*
- Little Bluestem ([\*Schizachyrium scoparium\*](#))\*\*
- Yellow Prairie Grass ([\*Sorghastrum nutans\*](#))\*\*
- Cordgrass ([\*Spartina pectinata\*](#))\*
- Prairie Dropseed ([\*Sporobolus heterolepis\*](#))\*\*

## × **GROUNDCOVERS:**

- Bastard-toadflax ([\*Comandra umbellata\*](#))\*
- Northern Bedstraw ([\*Galium boreale\*](#))\*
- Hairy Bedstraw ([\*Galium pilosum\*](#))\*
- Long-leaved Bluets ([\*Houstonia longifolia\*](#))\*
- Hoary Puccoon ([\*Lithospermum canescens\*](#))\*
- Spotted Bee Balm / Dotted Horsemint ([\*Monarda punctata\*](#))\*\*
- Mintweed ([\*Salvia reflexa\*](#))\*
- Little Ladys'-Tresses ([\*Spiranthes tuberosa\*](#))
- Prairie Violet ([\*Viola pedatifida\*](#))\*\*

## × SHRUBS:

New Jersey Tea ([Ceanothus americanus](#))<sup>\*\*</sup>

Gray Dogwood ([Cornus racemosa](#))<sup>\*</sup>

■ Red Osier Dogwood ([Cornus sericea](#))<sup>\*</sup>

• American Hazelnut ([Corylus americana](#))<sup>\*\*\*</sup>

• Shrubby Cinquefoil ([Dasiphora fruticosa](#))<sup>\*</sup>

• Common Juniper ([Juniperus communis](#))<sup>\*</sup>

Ninebark ([Physocarpus opulifolius](#))<sup>\*\*</sup>

• Prairie Rose ([Rosa arkansana](#))<sup>\*\*</sup>

• Wild Rose ([Rosa blanda](#))<sup>\*\*</sup>

• Pasture Rose ([Rosa carolina](#))<sup>\*\*</sup>

• Climbing Rose ([Rosa setigera](#))<sup>\*</sup>

• Prairie Willow ([Salix humilis](#))<sup>\*\*</sup>

## × TREES:

• Juneberry ([Amelanchier arborea](#))<sup>\*\*\*</sup>

• Inland Shadbush ([Amelanchier interior](#))<sup>\*\*\*</sup>

• Round-leaved Serviceberry ([Amelanchier sanguinea](#))<sup>\*\*</sup>

• Pignut Hickory ([Carya glabra](#))<sup>\*\*</sup>

• Flowering Dogwood ([Cornus florida](#))<sup>\*</sup>

- Red-cedar ([Juniperus virginiana](#))\*\*
  - Ironwood ([Ostrya virginiana](#))\*
  - White Pine ([Pinus strobus](#))\*\*
  - Quaking Aspen ([Populus tremuloides](#))\*\*
  - White Oak ([Quercus alba](#))\*\*
  - Bur Oak ([Quercus macrocarpa](#))\*\*
  - Black Oak ([Quercus velutina](#))\*\*
  - Sassafras ([Sassafras albidum](#))\*\*
- 

### 3.) Dry/Sandy Species

#### × FLOWERS:

- Pale Agoseris ([Agoseris glauca](#))\*
- Hairy Angelica ([Angelica venenosa](#))\*
- Wormwood ([Artemisia campestris](#))\*
- White Sagebrush ([Artemisia ludoviciana](#))\*\*
- Claspig Milkweed ([Asclepias amplexicaulis](#))\*\*
- Tall Green Milkweed ([Asclepias hirtella](#))\*\*\*
- Purple Milkweed ([Asclepias purpurascens](#))\*\*\*

- Common Milkweed ([\*Asclepias syriaca\*](#))\*\*
- Butterfly Weed ([\*Asclepias tuberosa\*](#))\*
- Whorled Milkweed ([\*Asclepias verticillata\*](#))\*\*
- Green Milkweed ([\*Asclepias viridiflora\*](#))\*\*
- xFalse Boneset ([\*Brickellia eupatorioides\*](#))\*
- Harebell ([\*Campanula rotundifolia\*](#))\*
- Pasture Thistle ([\*Cirsium discolor\*](#))\*\*
- Hill's Thistle ([\*Cirsium hillii\*](#))\*\*
- Hoary Frostweed ([\*Crocanthemum bicknellii\*](#))\*
- Canada Frostweed ([\*Crocanthemum canadense\*](#))\*
- Sand Coreopsis ([\*Coreopsis lanceolata\*](#))\*
- xPlains Coreopsis ([\*Coreopsis tinctoria\*](#))\*
- Hairy Small-leaf Tick-trefoil ([\*Desmodium ciliare\*](#))\*
- Tall Tick-trefoil ([\*Desmodium glabellum\*](#))\*
- Prairie Tick-trefoil ([\*Desmodium illinoense\*](#))\*
- Small Leaf Tick-trefoil ([\*Desmodium marilandicum\*](#))\*
- Stiff Tick-trefoil ([\*Desmodium obtusum\*](#))\*
- Prairie Cinquefoil ([\*Drymocallis arguta\*](#))\*
- xPurple Coneflower ([\*Echinacea purpurea\*](#))\*\*
- Tall Boneset ([\*Eupatorium altissimum\*](#))\*\*\*
- Flowering Spurge ([\*Euphorbia corollata\*](#))\*
- Prairie Smoke ([\*Geum triflorum\*](#))\*

- Cucumber-leaf Sunflower ([\*Helianthus debilis\*](#))\*\*
- Hairy Sunflower ([\*Helianthus hirsutus\*](#))\*\*
- Western Sunflower ([\*Helianthus occidentalis\*](#))\*\*
- Stiff Sunflower ([\*Helianthus pauciflorus\*](#))\*\*
- Hairy Hawkweed ([\*Hieracium gronovii\*](#))\*
- Canada Hawkweed ([\*Hieracium kalmii\*](#))\*
- Long-bearded Hawkweed ([\*Hieracium longipilum\*](#))\*
- Panicked Hawkweed ([\*Hieracium paniculatum\*](#))\*\*
- Rough Hawkweed ([\*Hieracium scabrum\*](#))\*
- Rattlesnake-weed ([\*Hieracium venosum\*](#))\*
- Round Headed Bush-clover ([\*Lespedeza capitata\*](#))\*
- Violet Bush-clover ([\*Lespedeza frutescens\*](#))\*
- Hairy Bush-clover ([\*Lespedeza hirta\*](#))\*
- Violet Lespedeza ([\*Lespedeza violacea\*](#))\*
- Slender Bush-clover ([\*Lespedeza virginica\*](#))\*
- Rough Blazing-star ([\*Liatris aspera\*](#))\*
- Cylindrical Blazing-star ([\*Liatris cylindracea\*](#))\*
- Northern Blazing-star ([\*Liatris scariosa\*](#))\*
- Wild Lupine ([\*Lupinus perennis\*](#))\*\*
- Wild Bergamot ([\*Monarda fistulosa\*](#))\*\*
- xBlue Toadflax ([\*Nuttallanthus canadensis\*](#))\*
- xFragile Prickly-Pear Cactus ([\*Opuntia fragilis\*](#))\*\*

- Hairy Beard-tongue ([Penstemon hirsutus](#))\*
- Pale Beard-tongue ([Penstemon pallidus](#))\*
- Prairie Phlox ([Phlox pilosa](#))\*
- Jointweed ([Polygonum articulatum](#))\*
- Slender Knotweed ([Polygonum tenue](#))
- Black-eyed Susan ([Rudbeckia hirta](#))\*
- Orange Coneflower ([Rudbeckia fulgida](#))\*
- Compass Plant ([Silphium laciniatum](#))\*\*
- Prairie Dock ([Silphium terebinthinaceum](#))\*\*
- Silver-rod ([Solidago bicolor](#)\*\*\*)
- Early Goldenrod ([Solidago juncea](#))\*\*
- Old-field Goldenrod ([Solidago nemoralis](#))\*\*
- Showy Goldenrod ([Solidago speciosa](#))\*\*
- Prairie Heart-leaved Aster ([Symphyotrichum oolentangiense](#))\*
- xSilky Aster ([Symphyotrichum sericeum](#)\*\*\*)
- Goats-rue ([Tephrosia virginiana](#))\*\*

## × GRAMINOIDS:

- Big Bluestem ([Andropogon gerardii](#))\*
- Fork-tipped Three-awned Grass ([Aristida basiramea](#))
- Three-awned grass ([Aristida purpurascens](#))\*
- xWavy Hair Grass ([Avenella flexuosa](#))

- Pennsylvania Sedge ([Carex pensylvanica](#))\*
- Slender Sand Sedge ([Cyperus lupulinus](#))
- Poverty Grass ([Danthonia spicata](#))
- Scribner's Panic Grass ([Dichanthelium oligosanthos](#))
- Fall Witch Grass ([Digitaria cognata](#))
- Purple Love Grass ([Eragrostis spectabilis](#))
- xRough Fescue ([Festuca altaica](#))
- June Grass ([Koeleria macrantha](#))
- xRice Grass ([Piptatheropsis pungens](#))
- Little Bluestem ([Schizachyrium scoparium](#))\*\*
- Yellow Prairie Grass ([Sorghastrum nutans](#))\*\*
- Sand Dropseed ([Sporobolus cryptandrus](#))

## x **GROUNDCOVERS:**

- xBearberry ([Arctostaphylos uva-ursi](#))
- Pussytoes ([Antennaria neglecta](#))
- Smooth Pussytoes ([Antennaria parlinii](#))
- Spotted Spurge ([Euphorbia maculata](#))\*
- Wild Strawberry ([Fragaria virginiana](#))\*\*
- Long-bearded Hawkweed ([Hieracium longipilum](#))
- Long-leaved Bluets ([Houstonia longifolia](#))\*

- Hairy Puccoon ([\*Lithospermum caroliniense\*](#))
- Spotted Bee Balm / Dotted Horsemint ([\*Monarda punctata\*](#))\*\*
- Early Buttercup ([\*Ranunculus fascicularis\*](#))\*\*
- Woodland Stonecrop ([\*Sedum ternatum\*](#))\*
- Little Ladys'-Tresses ([\*Spiranthes tuberosa\*](#))
- Birdfoot Violet ([\*Viola pedata\*](#))\*\*

## × SHRUBS:

- xLeadplant ([\*Amorpha canescens\*](#))\*\*
- New Jersey Tea ([\*Ceanothus americanus\*](#))\*\*
- xSweetfern ([\*Comptonia peregrina\*](#))\*
- American Hazelnut ([\*Corylus americana\*](#))\*\*
- Witch-hazel ([\*Hamamelis virginiana\*](#))\*\*
- Sand Cherry ([\*Prunus pumila\*](#))\*\*
- xHog Plum ([\*Prunus umbellata\*](#))\*
- Winged Sumac ([\*Rhus copallina\*](#))\*
- Staghorn Sumac ([\*Rhus typhina\*](#))\*
- Pasture Rose ([\*Rosa carolina\*](#))\*\*
- Prairie Willow ([\*Salix humilis\*](#))\*\*
- Low Sweet Blueberry ([\*Vaccinium angustifolium\*](#))\*\*

## × TREES:

- xJack Pine ([Pinus banksiana](#))\*\*
  - xRed Pine ([Pinus resinosa](#))\*
  - xWhite Pine ([Pinus strobus](#))\*\*
  - White Oak ([Quercus alba](#))\*\*
  - Northern Pin Oak ([Quercus ellipsoidalis](#))\*\*
  - Bur Oak ([Quercus macrocarpa](#))\*\*
  - Dwarf Chinquapin Oak ([Quercus prinoides](#))\*\*
  - Black Oak ([Quercus velutina](#))\*\*
- 

## 4.) Woodland Species

### × FLOWERS:

Black Cohosh ([Actaea racemosa](#))\*

■ White Baneberry ([Actaea pachypoda](#))\*

• Giant Yellow Hyssop ([Agastache nepetoides](#))\*\*

• Tall Hairy Agrimony ([Agrimonia gryposepala](#))\*

• Swamp Agrimony ([Agrimonia parviflora](#))\*

Wild Leek ([Allium tricoccum](#))\*

- American Hog Peanut ([\*Amphicarpaea bracteata\*](#))\*
- Thimbleweed ([\*Anemone cylindrica\*](#))\*
- Hairy Angelica ([\*Angelica venenosa\*](#))\*
- Columbine ([\*Aquilegia canadensis\*](#))\*
- Poke Milkweed ([\*Asclepias exaltata\*](#))\*\*
- Wild Hyacinth ([\*Camassia scilloides\*](#))\*\*
- American Bellflower ([\*Campanula americana\*](#))\*
- Blue Cohosh ([\*Caulophyllum thalictroides\*](#))\*
- Enchanter's Nightshade ([\*Circaea lutetiana\*](#))\*
- Canadian Honewort ([\*Cryptotaenia canadensis\*](#))\*
- Hoary Tick-trefoil ([\*Desmodium canescens\*](#))\*
- Large Bract Tick-trefoil ([\*Desmodium cuspidatum\*](#))\*
- Tall Tick-trefoil ([\*Desmodium glabellum\*](#))\*
- Panicked Tick-trefoil ([\*Desmodium paniculatum\*](#))\*
- Perplexed Tick-trefoil ([\*Desmodium perplexum\*](#))\*
- Round-leaf Tick-trefoil ([\*Desmodium rotundifolium\*](#))\*
- xAmerican Columbo ([\*Frasera caroliniensis\*](#))\*
- Yellow Wild Licorice ([\*Galium lanceolatum\*](#))\*
- White Avens ([\*Geum canadense\*](#))\*
- Woodland Sunflower ([\*Helianthus divaricatus\*](#))\*\*
- Pale-leaved Woodland Sunflower ([\*Helianthus strumosus\*](#))\*\*
- Pointed-leaf Tick-trefoil ([\*Hylodesmum glutinosum\*](#))

- Spotted St. John's Wort ([\*Hypericum punctatum\*](#))\*
- Starry Solomon-Seal ([\*Maianthemum stellatum\*](#))\*
- False Solomon-Seal ([\*Maianthemum racemosum\*](#))\*
- xVirginia Bluebells ([\*Mertensia virginica\*](#))\*
- Aniseroot ([\*Osmorhiza longistylis\*](#))\*
- American Jumpseed ([\*Persicaria virginiana\*](#))\*
- American Lopseed ([\*Phryma leptostachya\*](#))\*
- Mayapple ([\*Podophyllum peltatum\*](#))\*
- Smooth Solomon's Seal ([\*Polygonatum biflorum\*](#))\*
- xStarry Campion ([\*Silene stellata\*](#))\*\*
- False Spikenard Seal ([\*Maianthemum racemosum\*](#))\*
- Blue-stemmed Goldenrod ([\*Solidago caesia\*](#))\*\*
- Common Blue Wood Aster ([\*Symphotrichum cordifolium\*](#))\*\*
- Yellow Pimpernel ([\*Taenidia integerrima\*](#))\*
- Common Trillium ([\*Trillium grandiflorum\*](#))\*
- Prairie Trillium ([\*Trillium recurvatum\*](#))\*\*
- Toadshade ([\*Trillium sessile\*](#))\*\*
- Yellow Trillium ([\*Trillium luteum\*](#))\*
- Late Horse Genitan ([\*Triosteum perfoliatum\*](#))\*
- Large Flowered Bellwort ([\*Uvularia grandiflora\*](#))

## × GRAMINOIDS:

- Long-awned Wood Grass ([\*Brachyelytrum erectum\*](#))\*
- Ear-leaved Brome ([\*Bromus latiglumis\*](#))\*
- Hairy Woodland Brome ([\*Bromus pubescens\*](#))
- Common Wood Sedge ([\*Carex blanda\*](#))\*\*
- Socialist Sedge ([\*Carex communis\*](#))
- Pennsylvania Sedge ([\*Carex pennsylvanica\*](#))\*\*
- Canada Wild Rye ([\*Elymus canadensis\*](#))\*\*
- Bottlebrush Grass ([\*Elymus hystrix\*](#))\*\*
- Silky Wild Rye ([\*Elymus villosus\*](#))\*\*
- Virginia Wild Rye ([\*Elymus virginicus\*](#))\*\*

## × GROUNDCOVERS:

- Canada Anemone ([\*Anemone canadensis\*](#))\*
- Wood Anemone ([\*Anemone quinquefolia\*](#))\*
- Wild Ginger ([\*Asarum canadense\*](#))\*
- Cutleaf Toothwort ([\*Cardamine concatenata\*](#))\*
- Spotted Wintergreen ([\*Chimaphila maculata\*](#))
- Umbellate Wintergreen ([\*Chimaphila umbellata\*](#))
- Virginia Spring Beauty ([\*Claytonia virginica\*](#))\*
- Wild Basil ([\*Clinopodium vulgare\*](#))\*\*

- Blue-Eyed Mary's ([\*Collinsia verna\*](#))\*\*
- Bunchberry ([\*Cornus canadensis\*](#))\*
- Squirrel Corn ([\*Dicentra canadensis\*](#))\*
- Dutchman's Breeches ([\*Dicentra cucullaria\*](#))\*
- Wild Yam ([\*Dioscorea villosa\*](#))\*\*
- False Rue Anemone ([\*Enemion biternatum\*](#))\*
- Wintergreen ([\*Gaultheria procumbens\*](#))\*\*
- Wild Geranium ([\*Geranium maculatum\*](#))\*
- Long-leaved Bluets ([\*Houstonia longifolia\*](#))\*
- False Spikenard ([\*Maianthemum racemosum\*](#))\*
- Wood Sandwort ([\*Moehringia lateriflora\*](#))
- Yellow Wood Sorrel ([\*Oxalis stricta\*](#))\*\*
- xViolet Wood Sorrel ([\*Oxalis violacea\*](#))\*
- Self-Heal ([\*Prunella vulgaris\*](#))\*
- Bloodroot ([\*Sanguinaria canadensis\*](#))\*
- Mintweed ([\*Salvia reflexa\*](#))\*
- Woodland Stonecrop ([\*Sedum ternatum\*](#))\*
- American Germander ([\*Teucrium canadense\*](#))\*
- Rue Anemone ([\*Thalictrum thalictroides\*](#))\*
- Prairie Violet ([\*Viola pedatifida\*](#))\*\*
- Downy Yellow Violet ([\*Viola pubescens\*](#))\*\*
- Striped Cream Violet ([\*Viola striata\*](#))\*\*

- Common Blue Violet ([\*Viola sororia\*](#))\*\*

## × **FERNS:**

- Daisy-leaved Moonwort ([\*Botrychium matricariifolium\*](#))
- Rattlesnake Fern ([\*Botrypus virginianus\*](#))
- Bracken Fern ([\*Pteridium aquilinum\*](#))
- Cut-leaved Grape-fern ([\*Sceptridium dissectum\*](#))
- Blunt-leaved Grape-fern ([\*Sceptridium oneidense\*](#))
- Leathery Grape-fern ([\*Sceptridium multifidum\*](#))

## × **SHRUBS:**

New Jersey Tea ([\*Ceanothus americanus\*](#))\*\*

Gray Dogwood ([\*Cornus foemina\*](#))\*

- American Hazelnut ([\*Corylus americana\*](#))\*\*\*

Huckleberry ([\*Gaylussacia baccata\*](#))\*

- Witch-hazel ([\*Hamamelis virginiana\*](#))\*\*\*

- Shrubby St. John's-wort ([\*Hypericum prolificum\*](#))\*\*

Sand Cherry ([\*Prunus pumila\*](#))\*\*\*

Chokecherry ([\*Prunus virginiana\*](#))\*\*\*

Common Blackberry ([\*Rubus allegheniensis\*](#))\*\*

Northern Dewberry ([\*Rubus flagellaris\*](#))\*

- Low Sweet Blueberry ([\*Vaccinium angustifolium\*](#))<sup>\*\*\*</sup>
- Canada Blueberry ([\*Vaccinium myrtilloides\*](#))<sup>\*\*\*</sup>
- Hillside Blueberry ([\*Vaccinium pallidum\*](#))<sup>\*\*</sup>

## × TREES:

- Red Maple ([\*Acer rubrum\*](#))<sup>\*\*</sup>
- Juneberry ([\*Amelanchier arborea\*](#))<sup>\*\*\*</sup>
- Inland Shadbush ([\*Amelanchier interior\*](#))<sup>\*\*\*</sup>
- Smooth Serviceberry ([\*Amelanchier laevis\*](#))<sup>\*\*\*</sup>
- Pignut Hickory ([\*Carya glabra\*](#))<sup>\*\*</sup>
- Flowering Dogwood ([\*Cornus florida\*](#))<sup>\*</sup>
- Late Hawthorn ([\*Crataegus calpodendron\*](#))<sup>\*\*</sup>
- Cockspur Hawthorn ([\*Crataegus crus-galli\*](#))<sup>\*\*</sup>
- Copenhagen Hawthorn ([\*Crataegus intricata\*](#))<sup>\*\*</sup>
- Downy Hawthorn ([\*Crataegus mollis\*](#))<sup>\*\*</sup>
- Dotted Hawthorn ([\*Crataegus punctata\*](#))<sup>\*\*</sup>
- Succulent Hawthorn ([\*Crataegus succulenta\*](#))<sup>\*\*</sup>
- American Plum ([\*Prunus americana\*](#))<sup>\*\*\*</sup>
- Fire Cherry ([\*Prunus pensylvanica\*](#))<sup>\*\*\*</sup>
- Black Cherry ([\*Prunus serotina\*](#))<sup>\*\*\*</sup>
- White Oak ([\*Quercus alba\*](#))<sup>\*\*</sup>
- Northern Pin Oak ([\*Quercus ellipsoidalis\*](#))<sup>\*\*</sup>

- Bur Oak ([Quercus macrocarpa](#))\*\*
  - Dwarf Chinquapin Oak ([Quercus prinoides](#))\*\*
  - Black Oak ([Quercus velutina](#))\*\*
  - Sassafras ([Sassafras albidum](#))\*\*\*
- 

## **5.) Shaded Lowland Species**

### × **FLOWERS:**

- Tall Agrimony ([Agrimonia gryposepala](#))\*
- Swamp Agrimony ([Agrimonia parviflora](#))\*
- Angelica ([Angelica atropurpurea](#))\*  
Hairy Angelica ([Angelica venenosa](#))\*
- Jack-in-the-pulpit ([Arisaema triphyllum](#))\*
- Wild Hyacinth ([Camassia scilloides](#))\*\*
- Marsh Bellflower ([Campanula aparinoides](#))\*
- Harebell ([Campanula rotundifolia](#))\*
- American Bellflower ([Campanulastrum americanum](#))\*  
Enchanter's Nightshade ([Circaea lutetiana](#))\*

Virginia Waterleaf (*Hydrophyllum virginianum*)\*

- Cardinal Flower (*Lobelia cardinalis*)\*\*\*

White Bergamot (*Monarda clinopodia*)\*

- American Jumpseed (*Persicaria virginiana*)\*
- Canadian Clearweed (*Pilea pumila*)\*
- Cut-leaf Coneflower (*Rudbeckia laciniata*)\*\*
- Blue-stemmed Goldenrod (*Solidago caesia*)\*\*
- Broad-leaved Goldenrod (*Solidago flexicaulis*)\*\*

Nodding Trillium (*Trillium cernuum*)\*\*

- Purple Trillium (*Trillium erectum*)\*\*

Bent Trillium (*Trillium flexipes*)\*\*

White Vervain (*Verbena urticifolia*)\*

- Wingstem (*Verbesina alternifolia*)\*\*
- Golden Alexanders (*Zizia aurea*)\*

## × **GRAMINOIDS:**

- Fringed Brome (*Bromus ciliatus*)\*\*
- Ear-leaved Brome (*Bromus latiglumis*)
- Hairy Woodland Brome (*Bromus pubescens*)
- Satin Brome (*Bromus nottowayanus*)
- Common Wood Sedge (*Carex blanda*)\*\*

Gray's Sedge ([\*Carex grayi\*](#))\*

Bladder Sedge ([\*Carex intumescens\*](#))\*

- Hop Sedge ([\*Carex lupulina\*](#))\*\*
- Muslingum Sedge ([\*Carex muskingumensis\*](#))\*
- Tuckerman's Sedge ([\*Carex tuckermanii\*](#))\*
- Bottlebrush Grass ([\*Elymus hystrix\*](#))\*
- Fowl Manna Grass ([\*Glyceria striata\*](#))\*

## × **GROUNDCOVERS:**

Canada Anemone ([\*Anemone canadensis\*](#))\*

Spring Cress ([\*Cardamine bulbosa\*](#))\*

- Purple Cress ([\*Cardamine douglassii\*](#))\*

Bunchberry ([\*Cornus canadensis\*](#))\*

White Trout Lily ([\*Erythronium albidum\*](#))\*

- Yellow Trout Lily ([\*Erythronium americanum\*](#))\*

- Wild Geranium ([\*Geranium maculatum\*](#))\*\*

- American Alum Root ([\*Heuchera americana\*](#))\*

Wood Sandwort ([\*Moehringia lateriflora\*](#))

May Apple ([\*Podophyllum peltatum\*](#))\*

- Foamflower ([\*Tiarella cordifolia\*](#))\*

## × **FERNS:**

- Maidenhair Fern ([\*Adiantum pedatum\*](#))
- Lady Fern ([\*Athyrium filix-femina\*](#))
- Lance-Leaved Moonwort ([\*Botrychium angustisegmentum\*](#))
- Shade Moonwort ([\*Botrychium tenebrosum\*](#))
- Rattlesnake Fern ([\*Botrypus virginianus\*](#))
- Bulblet Fern ([\*Cystopteris bulbifera\*](#))
- Lowland Fragile Fern ([\*Cystopteris protrusa\*](#))
- Mackay's Bladder Fern ([\*Cystopteris tenuis\*](#))
- Spinulose Wood Fern ([\*Dryopteris carthusiana\*](#))
- xLog Fern ([\*Dryopteris celsa\*](#))\*
- Clinton's Wood Fern ([\*Dryopteris clintoniana\*](#))
- Crested Shield Fern ([\*Dryopteris cristata\*](#))
- Goldie's Wood Fern ([\*Dryopteris goldieana\*](#))
- Intermediate Wood Fern ([\*Dryopteris intermedia\*](#))
- Ostrich Fern ([\*Matteuccia struthiopteris\*](#))
- Sensitive Fern ([\*Onoclea sensibilis\*](#))
- Cinnamon Fern ([\*Osmunda cinnamomea\*](#))
- Interrupted Fern ([\*Osmunda claytoniana\*](#))
- Royal Fern ([\*Osmunda regalis\*](#))
- New York fern ([\*Thelypteris noveboracensis\*](#))

## × **SHRUBS:**

Rough-leaved Dogwood ([\*Cornus drummondii\*](#))\*

- Witch-hazel ([\*Hamamelis virginiana\*](#))\*\*\*

Winterberry ([\*Ilex verticillata\*](#)\*\*

- Spicebush ([\*Lindera benzoin\*](#)\*\*

- Gooseberry ([\*Ribes hirtellum\*](#)\*\*

- American Bladdernut ([\*Staphylea trifolia\*](#)\*\*

Maple-leaved Arrow-wood ([\*Viburnum acerifolium\*](#))\*

Highbush-Cranberry ([\*Viburnum trilobum\*](#)\*\*

Black-haw ([\*Viburnum prunifolium\*](#)\*\*

- Prickly Ash ([\*Zanthoxylum americanum\*](#))\*

## × **TREES:**

- Black Maple ([\*Acer nigrum\*](#))\*

- Red Maple ([\*Acer rubrum\*](#)\*\*

- Silver Maple ([\*Acer saccharinum\*](#)\*\*

- Sugar Maple ([\*Acer saccharum\*](#)\*\*

- Muscledwood ([\*Carpinus caroliniana\*](#)\*\*

- Bitternut Hickory ([\*Carya cordiformis\*](#)\*\*

- Shellbark Hickory ([\*Carya laciniosa\*](#))\*\*\*
- Shagbark Hickory ([\*Carya ovata\*](#))\*\*\*
- Hackberry ([\*Celtis occidentalis\*](#))\*\*
- Late Hawthorn ([\*Crataegus calpodendron\*](#))\*\*
- Cockspur Hawthorn ([\*Crataegus crus-galli\*](#))\*\*
- Copenhagen Hawthorn ([\*Crataegus intricata\*](#))\*\*
- Downy Hawthorn ([\*Crataegus mollis\*](#))\*\*
- Dotted Hawthorn ([\*Crataegus punctata\*](#))\*\*
- Succulent Hawthorn ([\*Crataegus succulenta\*](#))\*\*
- American Beech ([\*Fagus grandifolia\*](#))\*\*
- White Ash ([\*Fraxinus americana\*](#))\*\*
- Green Ash ([\*Fraxinus pennsylvanica\*](#))\*\*
- Pumpkin Ash ([\*Fraxinus profunda\*](#))\*\*
- Ironwood ([\*Ostrya virginiana\*](#))\*\*
- Sycamore ([\*Platanus occidentalis\*](#))\*\*
- Cottonwood ([\*Populus deltoides\*](#))\*\*
- Canada Plum ([\*Prunus nigra\*](#))\*\*
- White Oak ([\*Quercus alba\*](#))\*\*
- Swamp White Oak ([\*Quercus bicolor\*](#))\*\*
- Bur Oak ([\*Quercus macrocarpa\*](#))\*\*
- Chinquapin Oak ([\*Quercus muehlenbergii\*](#))\*\*
- Pin Oak ([\*Quercus palustris\*](#))\*\*

- Red Oak ([Quercus rubra](#))\*\*
  - Shumard's Oak ([Quercus shumardii](#))\*\*
  - Basswood ([Tilia americana](#))\*
  - American Elm ([Ulmus americana](#))\*\*
- 

## ***Native Nurseries Nearby***

<https://www.michiganensenatives.com/>

<https://www.michiganmastergardener.org/nurseries-featuring-native-plants>

<https://northoakland.wildones.org/native-plant-nursery-list/>

<https://newleafnatives.com/collections/all>

<https://windyrocknursery.com>

<https://www.wildcherryfarm.com>

<https://www.feral-flora.com>

<https://brightlanegardens.com/about/>

<https://www.downtownhomeandgarden.com>

<https://www.michiganwildflowerfarm.com/seed-species-and-pricing/wetland-species/>

<https://www.eastmichnatives.com/>

<https://www.detroitwildflowers.com/>

<https://livsnativenursery.com/>

<https://maps.app.goo.gl/MiYZ8ognQgzmYxKC8>

<https://www.prairiemoon.com/solidago-uliginosa-bog-goldenrod>

<https://nativeconnections.net/>

<https://www.washtenaw.org/3097/Find-Native-Plants>

## **Sources: (Worth Exploring!)**

<https://michiganflora.net/>

<https://mnfi.anr.msu.edu/communities/list>

<https://mnfi.anr.msu.edu/reports/MNFI-Report-2005-05.pdf>

<https://www2.dnr.state.mi.us/publications/pdfs/HuntingWildlifeHabitat/FQA.pdf>

<https://www.washtenaw.org/raingardens>

<https://www.a2gov.org/departments/systems-planning/water-resources/stormwater/Pages/Rain-gardens-.aspx>

[https://www.washtenaw.org/DocumentCenter/View/29535/raingardens\\_faq](https://www.washtenaw.org/DocumentCenter/View/29535/raingardens_faq)

<https://www.michigan.gov/egle/about/organization/water-resources/wetlands/what-are-wetlands-and-why-are-they-important>

<https://www.google.com/amp/s/www.mlive.com/news/ann-arbor/2024/09/ypsilanti-wants-your-input-for-rain-gardens-green-infrastructure-in-two-parks.html%3foutputType=amp>

<https://www.a2gov.org/departments/Parks-Recreation/NAP/Native-Plants/pages/nativegrassesrusshessedges.aspx>

[https://www.canr.msu.edu/resources/forest\\_types\\_of\\_michigan\\_swamp\\_hardwood\\_e3202\\_6](https://www.canr.msu.edu/resources/forest_types_of_michigan_swamp_hardwood_e3202_6)

<https://brightlanegardens.com/native-plants/midwest-native-plants/top-7-michigan-native-plants-for-ground-cover/>

[https://www.lesueurcounty.gov/DocumentCenter/View/4850/Create A Rain Garden](https://www.lesueurcounty.gov/DocumentCenter/View/4850/Create_A_Rain_Garden)

<https://www.nwf.org/-/media/Documents/PDFs/Garden-for-Wildlife/Keystone-Plants/NWF-GFW-keystone-plant-list-ecoregion-6-northwestern-forested-mountains.pdf>

[https://www.nwf.org/-/media/Documents/PDFs/Garden-for-Wildlife/Keystone-Plants/NWF-GFW-keystone-plant-list-ecoregion-5-northern-forests.pdf?sc\\_lang=en&hash=251A6D41C98F0594773A3879D6A7D75E](https://www.nwf.org/-/media/Documents/PDFs/Garden-for-Wildlife/Keystone-Plants/NWF-GFW-keystone-plant-list-ecoregion-5-northern-forests.pdf?sc_lang=en&hash=251A6D41C98F0594773A3879D6A7D75E)

<https://www.washtenaw.org/3097/Find-Native-Plants>

[http://www.amazilia.net/MIHummerNet/Hummingbird\\_Plants/Native\\_Michigan\\_Hummingbird\\_Plants.htm](http://www.amazilia.net/MIHummerNet/Hummingbird_Plants/Native_Michigan_Hummingbird_Plants.htm)

<https://freshwaterhabitats.org.uk/wp-content/uploads/2013/09/FLOODPLAIN.pdf>

[https://www2.dnr.state.mi.us/publications/pdfs/huntingwildlifehabitat/landowners\\_guide/habitat\\_mgmt/planning/Knowing\\_Your\\_Soil.htm](https://www2.dnr.state.mi.us/publications/pdfs/huntingwildlifehabitat/landowners_guide/habitat_mgmt/planning/Knowing_Your_Soil.htm)

[https://soilseries.sc.egov.usda.gov/OSD\\_Docs/Y/YPSI.html](https://soilseries.sc.egov.usda.gov/OSD_Docs/Y/YPSI.html)

[https://soilseries.sc.egov.usda.gov/OSD\\_Docs/W/WASHTENAW.html](https://soilseries.sc.egov.usda.gov/OSD_Docs/W/WASHTENAW.html)

<https://education.nationalgeographic.org/resource/keystone-species/>

[Are We SAVING the RIGHT BEES? Create a GARDEN For SPECIALIST POLLINATORS](#)

[Eco Resilience YouTube Playlist](#)

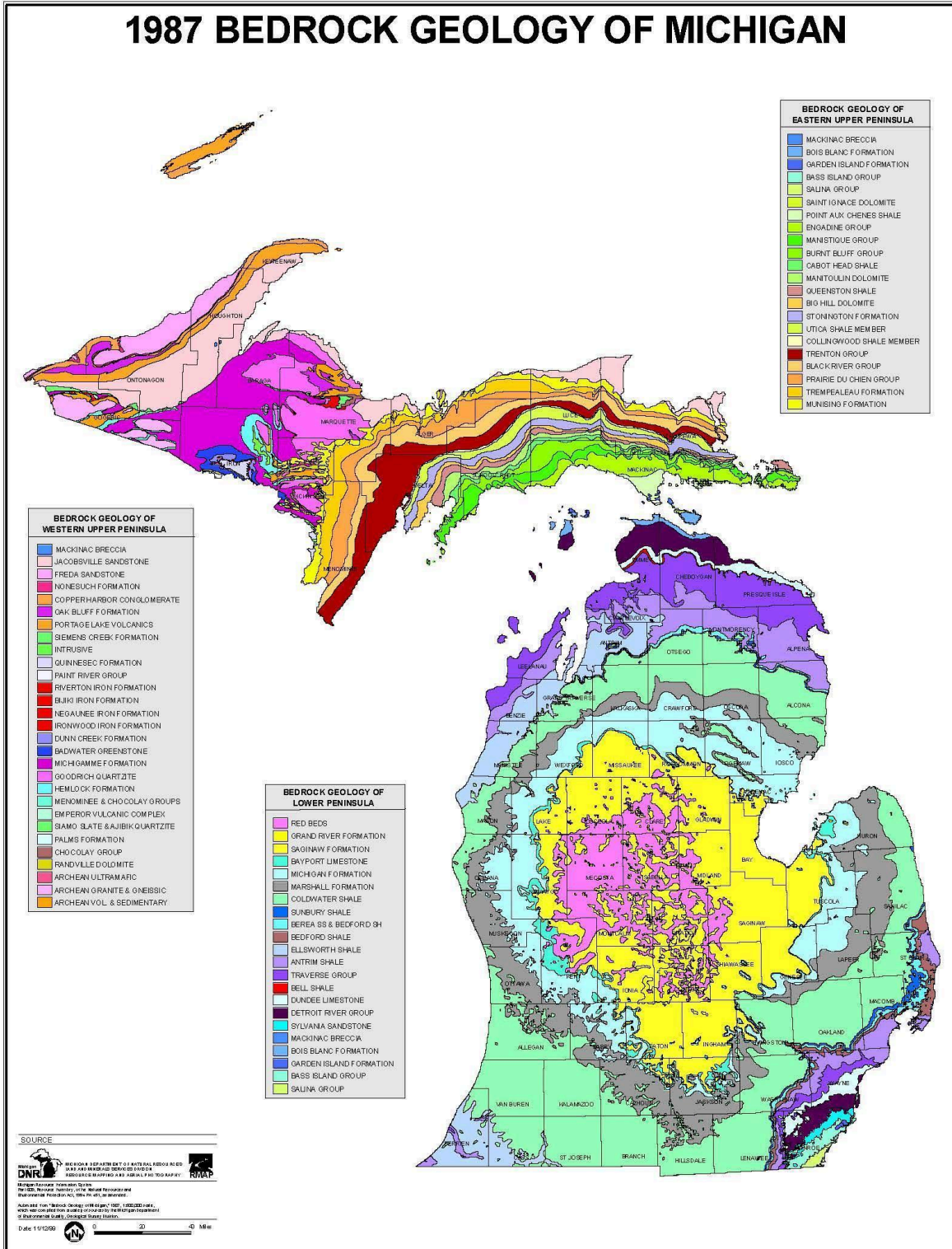
<https://www.earthday.org/fact-sheet-global-species-decline/>

<https://mnfi.anr.msu.edu/pdfs/plant-list-pdf.cfm>

<https://michigannature.wordpress.com/2010/08/13/michigans-top-endangered-plants/>

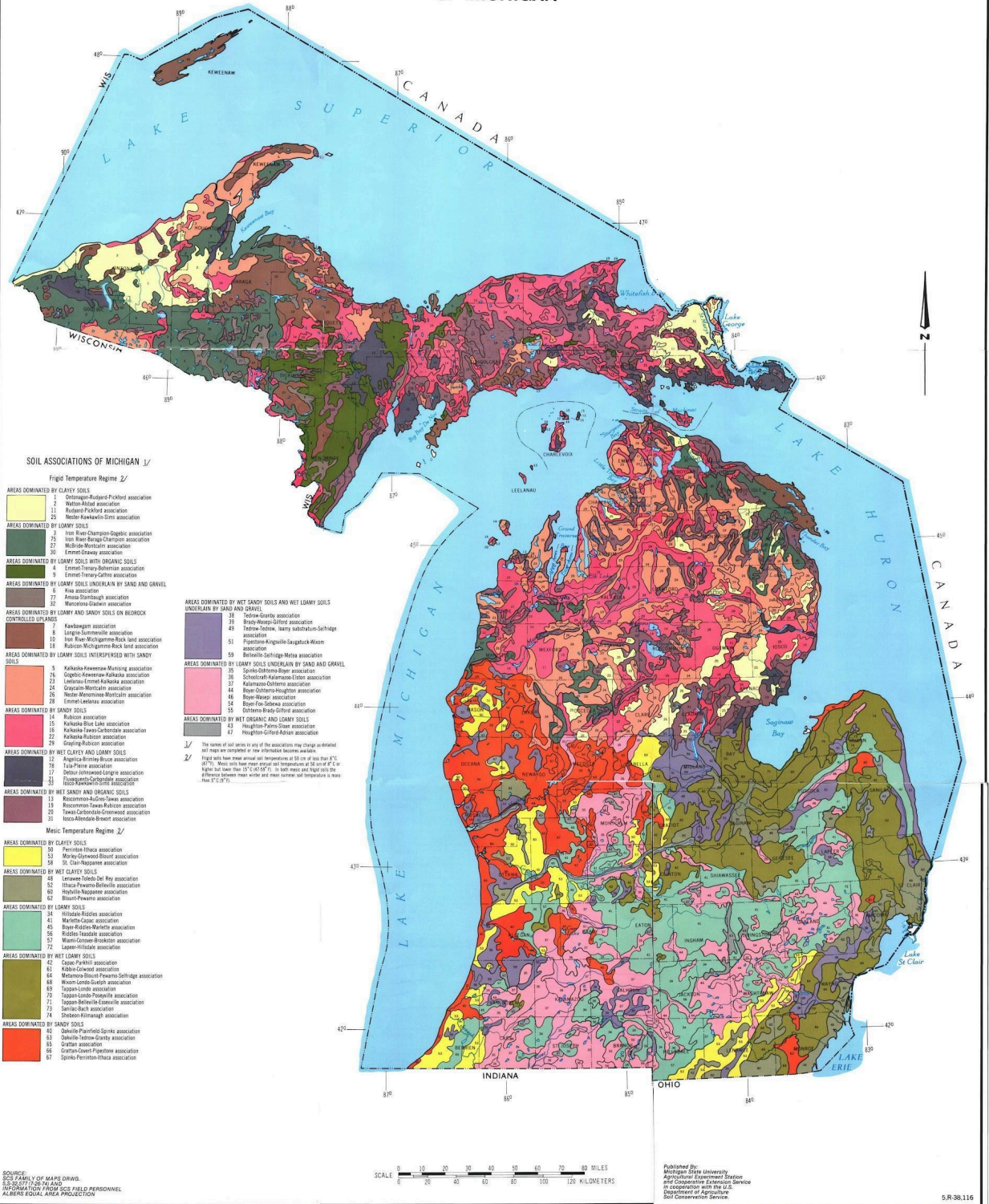
***\*Interesting Maps\****

# 1987 BEDROCK GEOLOGY OF MICHIGAN





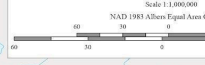
# SOIL ASSOCIATION MAP OF MICHIGAN



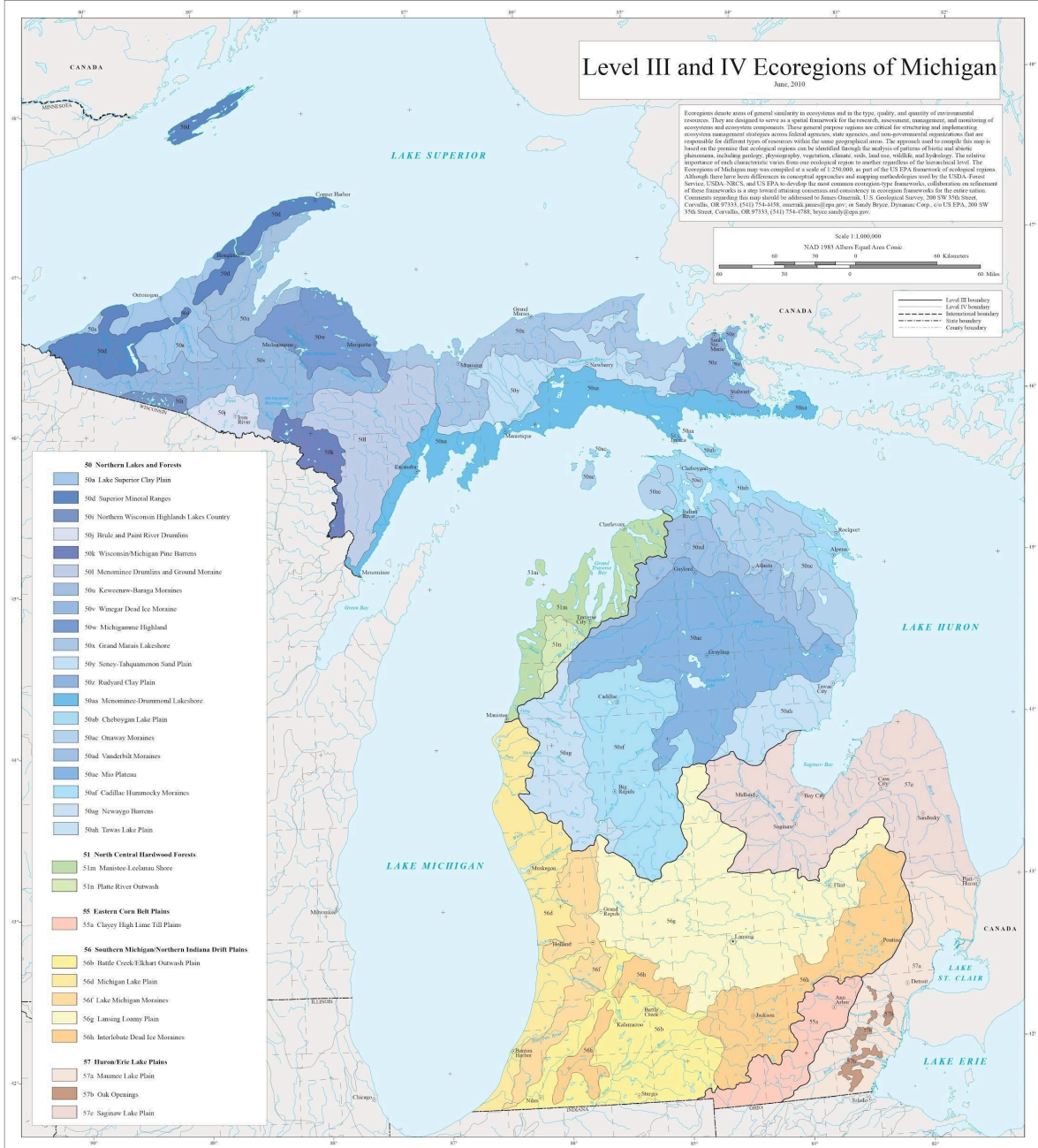
# Level III and IV Ecoregions of Michigan

June, 2010

Ecoregions denote areas of general similarity in ecosystems and in the type, quality, and quantity of environmental resources. They are designed to serve as a spatial framework for the research, assessment, management, and monitoring of ecosystems and ecosystem components. These general purpose regions are critical for structuring and implementing ecosystem management strategies across federal agencies, state agencies, and non-governmental organizations that are responsible for different types of resources within the same geographical areas. The approach used to compile this map is based on the premise that ecological regions can be identified through the analysis of patterns of biotic and abiotic phenomena, including geology, physiography, vegetation, climate, soils, land use, wildlife, and hydrology. The relative importance of each characteristic varies from one ecological region to another regardless of the hierarchical level. The Ecoregions of Michigan map was compiled at a scale of 1:250,000, as part of the US EPA framework of ecological regions. Although there have been differences in conceptual approaches and mapping methodologies used by USDA, Forest Service (USDA-SRBC), and US EPA to develop the most common ecoregion-type frameworks, collaboration and refinement of these frameworks is a step toward attaining consensus and consistency in ecoregion frameworks for the entire nation. Comments regarding this map should be addressed to James O'Connell, U.S. Geological Survey, 200 SW 5th Street, Corvallis, OR 97331, (541) 754-4158, [ecoregions@usgs.gov](mailto:ecoregions@usgs.gov), or Study Report, Dynamic Corp., c/o US EPA, 200 SW 37th Street, Corvallis, OR 97333, (541) 754-4768, [byc@studyreport.com](mailto:byc@studyreport.com).



- 50 Northern Lakes and Forests**
  - 50a Lake Superior Clay Plain
  - 50d Superior Mineral Ranges
  - 50n Northern Wisconsin Highlands-Lakes Country
  - 50j Brule and Point River Drumlins
  - 50k Wisconsin/Michigan Pine Barrens
  - 50l Menominee Drumlins and Ground Moraine
  - 50e Keweenaw-Sargus Moraines
  - 50v Winagat Dead Ice Moraine
  - 50w Michigan Highland
  - 50x Grand Marais Lakeshore
  - 50y Seney-Tahquamenon Sand Plain
  - 50z Rudyard Clay Plain
  - 50aa Menominee-Drummond Lakeshore
  - 50ab Cheboygan Lake Plain
  - 50ac Onaway Moraines
  - 50ad Vanderbilt Moraines
  - 50ae Mio Plateau
  - 50af Cadillac-Hummocky Moraines
  - 50ag Newaygo Barrens
  - 50ah Tawas Lake Plain
- 51 North Central Hardwood Forests**
  - 51m Manistee-Leclanau Shore
  - 51n Platte-River Outwash
- 55 Eastern Corn Belt Plains**
  - 55a Clayey High Line Till Plains
- 56 Southern Michigan/Northern Indiana Drift Plains**
  - 56b Battle Creek/Elkhart Outwash Plain
  - 56d Michigan Lake Plain
  - 56f Lake Michigan Moraines
  - 56g Lansing Loamy Plain
  - 56h Interlobate Dead Ice Moraines
- 57 Huron/Erie Lake Plains**
  - 57a Maumee Lake Plain
  - 57b Oak Openings
  - 57c Saginaw Lake Plain



# 2023 USDA Plant Hardiness Zone Map Michigan

