

**English Title: Concise, Clear, Maximum 20 Words; Each Word Begins with a Capital Letter Except for Conjunctions; Verdana Font 16 Points, Single Spacing**

**Author Pertama <sup>1\*</sup>, Author Kedua<sup>2</sup>, Author Ketiga<sup>3</sup>, dst (Font Verdana 10 Point Spasi)**

<sup>1</sup>Institution Name (Department, Faculty, University, University Address)

<sup>2</sup>Institution Name (Department, Faculty, University, University Address)

<sup>3</sup>Institution Name (Department, Faculty, University, University Address)

\*e-mail: [email@gmail.com](mailto:email@gmail.com)

\*Phone/WA: +62.....

Received: xx Months 202x, Revised: xx Months 202x, Accepted: xx Months 202x

**Abstract.** Abstract Verdana font 9 Point Space 1. The abstract contains the essence of the article, contains an introduction (1-2 concise sentences), objectives, methods including methods of analysis, results and discussion (conclusion). Abstracts are written in one paragraph and should not exceed 200 words. The abstract consists of Indonesian and English. Keywords: 3-5 keywords written in alphabetical order.

**Keywords:** Should include words/phrases listed in the title.

## **INTRODUCTION**

The narrative in the introduction is an important reason underlying the research. Show the "state of the art" of the research by reviewing similar studies that have been conducted previously. Explain the differences in previous research that are the reason for conducting this research. Explain the novelty of this research so that it is worthy of being a reference for further research. The introduction is no more than 600 words.

Citations in the body of the sentence use a name and year system, for example: physiologically, mangroves are able to play a role in the mechanisms of rhizodegradation, phytoextraction, phytoaccumulation, and phytovolatilization of heavy metals (Hastuti et al., 2013; Keymer-Gausset, 2018; Utami et al., 2018; Jeevanantham et al., 2019; Al-Thani and Yasseen, 2020; Falah et al., 2020). The % carbon content value of the substrate in Lembar Bay is lower than the carbon content of the Gili Meno mangrove substrate in the range of 4.85% C-20.00% C (Rahman and Hadi, 2021).

In addition, describe the gap analysis that shows the urgency of this research. At the end of the introductory description, clearly state the objectives of the research. The contents of the Introduction are typed in Verdana Font 10 point line spacing at least 12 points, paragraph special first line 1.27 cm.

## **RESEARCH METHODS**

This section contains an explanation of the time, place (image of the research location), research techniques and methods, and data analysis methods. Commonly used tools do not need to be detailed, but what must be listed is the test tool, namely the type or specifications, but not the brand. And a detailed explanation of the data analysis method must be included.

Each analysis method must show a reference source citation.

The research method narrative is typed in Verdana Font 10 point line spacing at least 12 points, paragraph special first line 1.27 cm.

### Example of Image Creation in Research Methods

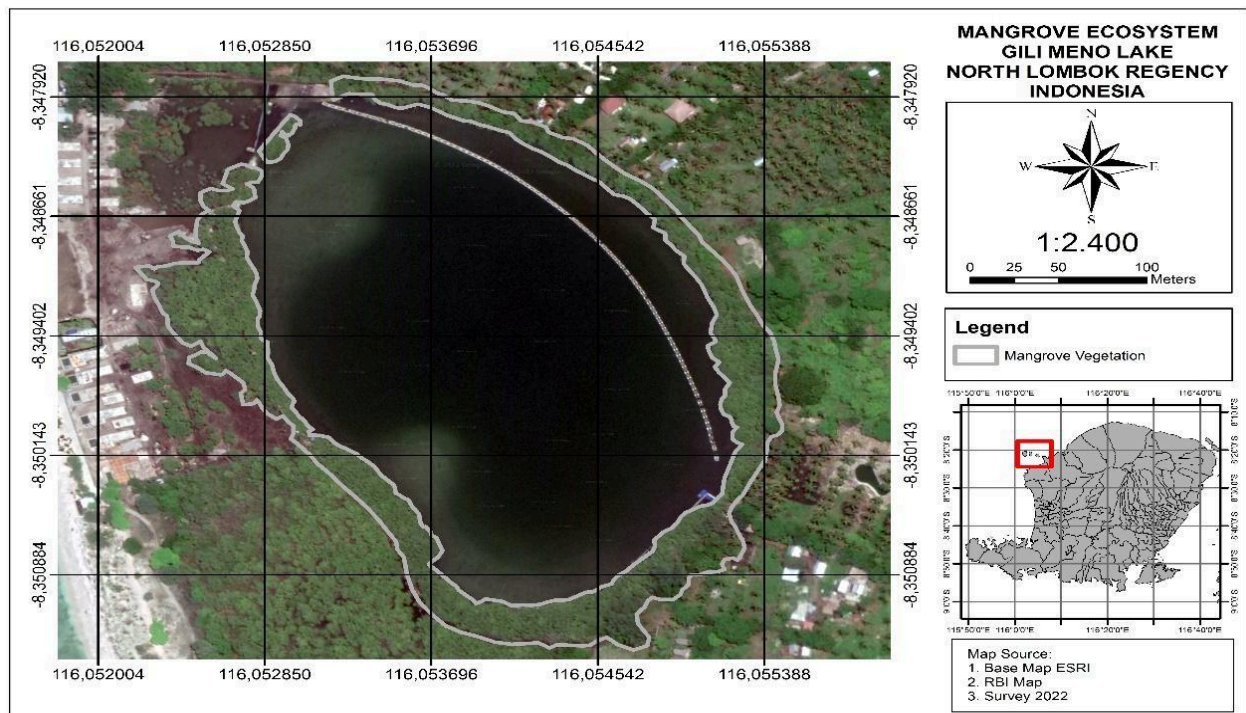


Figure 1. Clear and detailed image with a minimum resolution of 300 dpi (Rahman et al., 2022)

## RESULTS AND DISCUSSION

This section explains in detail the description of the research results and discussion to answer the research objectives. The presentation of results and discussion are written in paragraph form, can be typed with sub-chapters/points. The results and discussion can be strengthened with theories, findings, or references from previous references as a comparison and to strengthen the research results.

Citations use a name and year system, for example: "The potential of seagrass beds as carbon sinks and carbon storage can be done through the mechanism of photosynthesis, the results of photosynthesis can be stored as biomass that can last for thousands of years (Miyajima et al., 2015; Phang et al., 2015; Jiang et al., 2017; Ricart et al., 2017; Sophianto et al., 2020; Codur et al., 2022)".

The writing of the citation must begin with the oldest year except for citations in the narrative which only have 1 (one), for example: High density and cover of seagrass beds can provide benefits for the survival of marine biota as a food source, spawning area, coastal buffer and source of organic carbon in the substrate (Arkham et al., 2015; Rahman & Hadi, 2021). The density of seagrass beds in coastal areas can increase the diversity and abundance of fish as an economic source for coastal communities (Arkham et al., 2016), as reported by Wahyudin et al., (2018) that seagrass habitat has a strong relationship with the abundance of fish species, there are 118 species of fish found in the seagrass ecosystem habitat of Bintan Island.

Mathematical equations, stated clearly and typed using a program for formulas, for example Equation or Math Type. Decimal numbers, marked with a comma (,) for Indonesian and a dot (.) for English.

Scientific name; scientific names are written according to the rules of scientific writing according to ICZN for animal nomenclature, ICBN for plant nomenclature, as well as for viruses and bacteria must be in accordance with the nomenclature of viruses and bacteria. Units, quantitative measurements use the International System of Units (SI). The contents of the Results and Discussion are typed in Verdana 10 font except for the writing of sentences

contained in the table which are typed in Verdana 9 point font with 1 spacing, Example of a table as follows:

**Table 4.** BCF coefficient values for roots, leaves and substrate in the mangroves of the Rizophoraceae family in Selamat Bay

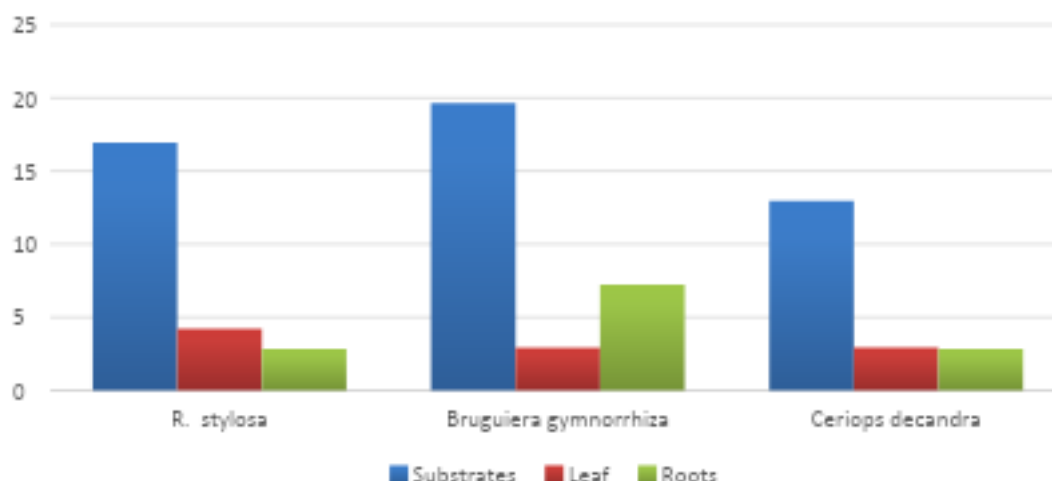
No	Sampel	TF	BAC leaf	BCF roots
1	Aaaaaaaa	1,49	0,25	0,17
2	Aaaaaaaa	0,40	0,15	0,37
Average		0,77	0,21	0,35
Standard deviation		0,620	0,053	0,180

Notes:

BCT/TF : *Biological Transfer Coefficient*

BAC : *Biological Accumulation Coefficient*

BCF : *Biological Concentration Factor*



**Figure 1.** Table title typed in 9-point Verdana Font, 1-spaced, capital letter at the beginning of the sentence; Table caption (Rahman et al., 2022)

## CONCLUSION

The conclusion is typed in 10-point Verdana font. The conclusion of the research is written concisely and clearly, in paragraph form, not points. The conclusion must answer the research objectives.

## ACKNOWLEDGEMENTS

Expressions of gratitude to certain parties who support (sponsor) the implementation of the research need to be conveyed (Optional). Typed in 10-point Verdana font.

## BIBLIOGRAPHY

The bibliography contains all the references cited in the text of the manuscript. Written in alphabetical order with the writing method as stated in the Author Guidelines. The writing style of the bibliography refers to the **APA 7th edition style by Mendeley tools or Zotero**. The references are in the form of primary references (scientific journal articles) and are up to date within the last 10 years, except for certain fields such as taxonomy and evolution.

The following is an example of writing a Bibliography. Typed with Verdana Font 10 point line spacing single, paragraph Hanging 1.27 cm.

### Journal

- Efendi, M.H., Irawati, M.H., Rochman, F., & Gofur, A. (2017). Environmental Conservation Education by Applying Islamic Values. *Journal of Education & Social Policy*, 4(2), 180-186.
- Rahman, F.A., Qayim, I., & Wardiatno, Y. (2018). Carbon storage variability in seagrass meadows of Marine Poton Bako, East Lombok, West Nusa Tenggara, Indonesia.

Biodiversitas Journal of Biological Diversity, 19(5), 1626–1631.  
<https://doi.org/10.13057/biodiv/d190505>.

Suhirman, S., Yusuf, Y., Muliadi, A. & Prayogi, S. (2020). The Effect of Problem-Based Learning with Character Emphasis toward Students' Higher-Order Thinking Skills and Characters. *International Journal of Emerging Technologies in Learning (iJET)*, 15(6), 183-191.

#### **Books**

Purwati, N. (2018) Pengembangan buku panduan pembelajaran IPA terintegrasi nilai-nilai Islam bagi guru madrasah tsanawiyah. Doctoral thesis, Universitas Negeri Malang

Brath, B., Friesen, T., Guerard, Y., Jacques-Brissette, C., Lindman, C., Lockridge, K., Mulgund, S., & Walke, B.J. (2015). *Climate change and resource sustainability: An overview for actuaries*. Canada: Canadian Institute of Actuaries.

Sudjana. (2007). *Penelitian & Penilaian Pendidikan*. Bandung: Sinar Baru Algesindo.

#### **Website**

White, H. (2007). Problem-based learning in introductory science across disciplines. Diakses tanggal 27 Maret 2022 dari <http://www.udel.edu/chem/white/finalrpt.html>.

#### **Prosiding**

Purwati, N. (2019). Pembelajaran IPA Terintegrasi Nilai Islam: Perspektif Guru IPA pada Madrasah Tsanawiyah di Indonesia. In *Proceeding National Conference: Education, Social Science, and Humaniora*, 1(1), 166-175.

#### **Thesis/Dissertation**

Rahman, F.A, Qayim, I., & Wardiato, Y. (2018). *Simpanan Karbon Padang Lamun Berdasarkan Habitat dan Jenis Berbeda di Kabupaten Lombok Timur* (Doctoral dissertation, Bogor Agricultural University (IPB)).