

External Storage Devices Formatting Guide

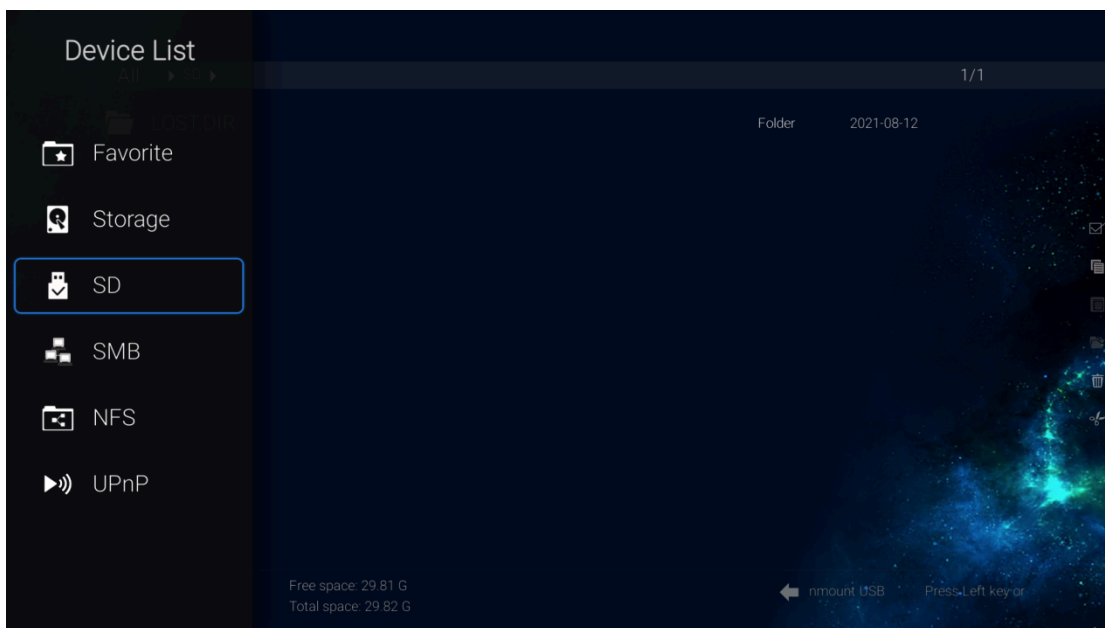
It is applicable for Zidoo RTD1619DR models firmware V6.3.30&V6.3.30_G and above.

Preparation

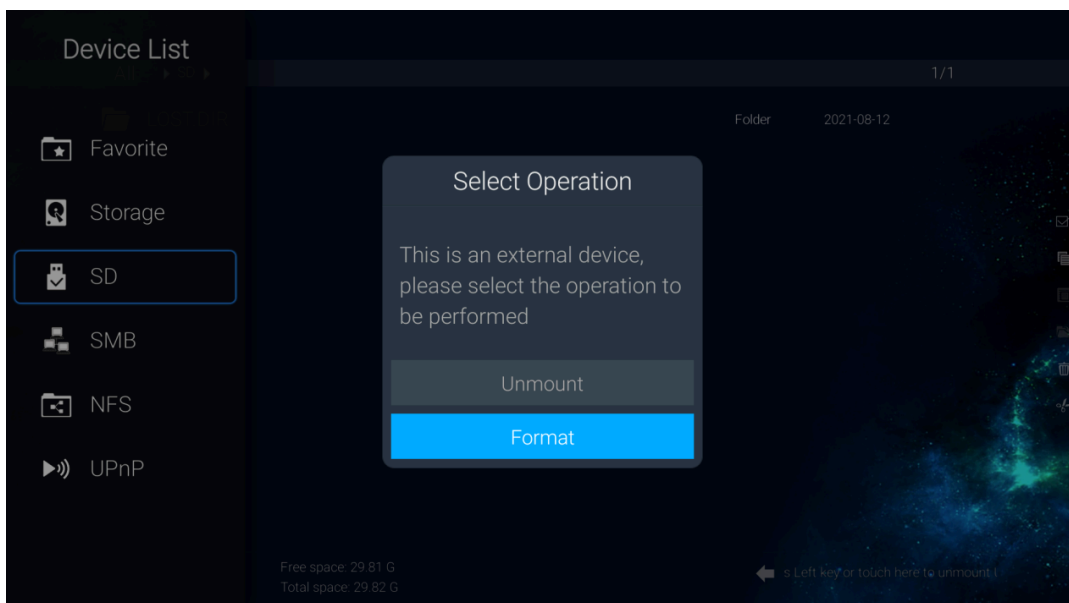
- 1.Zidoo Media player
- 2.An external storage device

Steps

- 1.Access into MEDIA CENTER and press LEFT ◀ key on remote control to see the below.

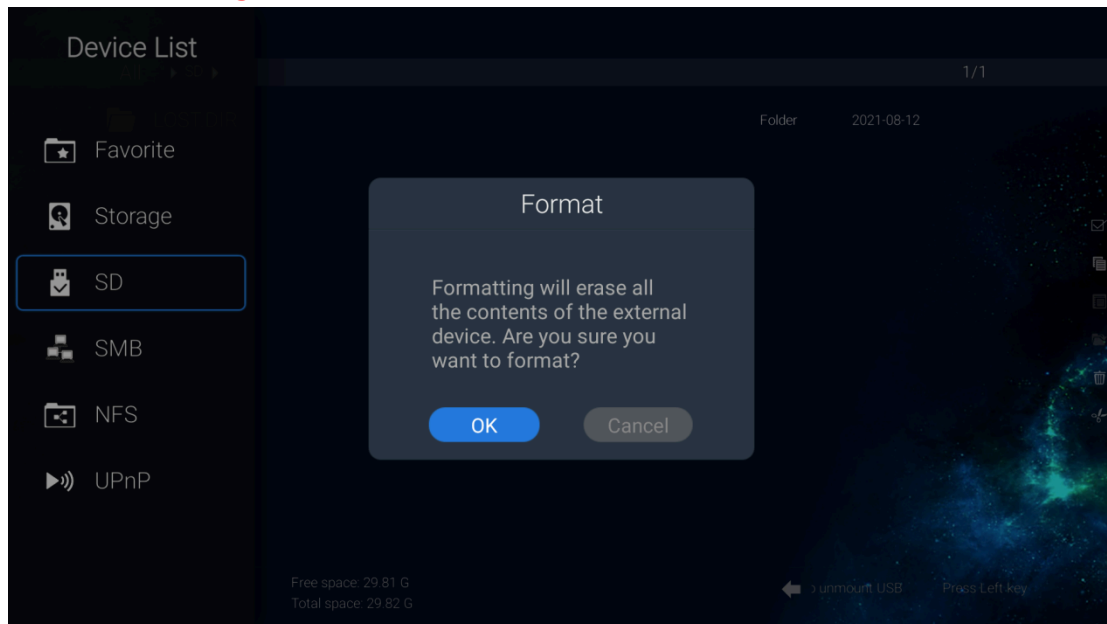


- 2.Choose the device that you want to format, press LEFT ◀ key again to find the menu and click “Format”.

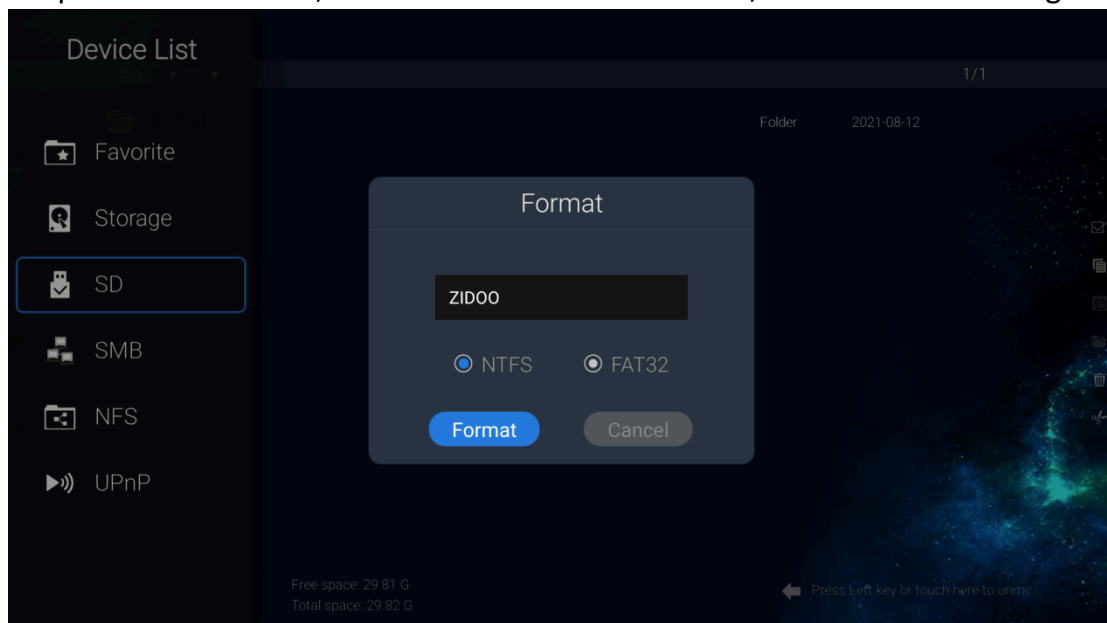


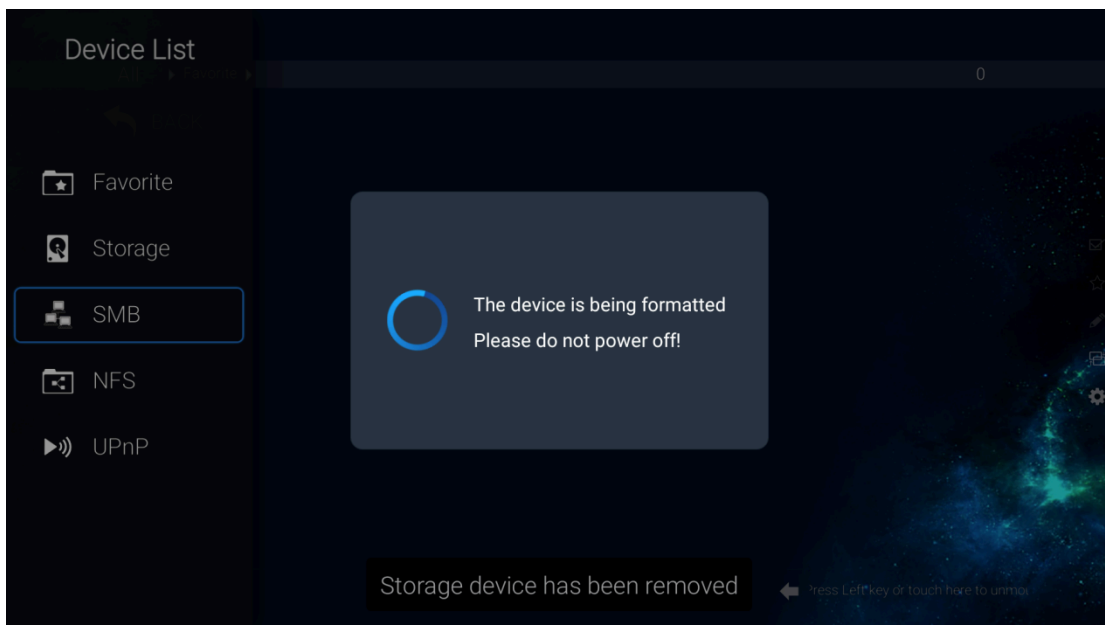
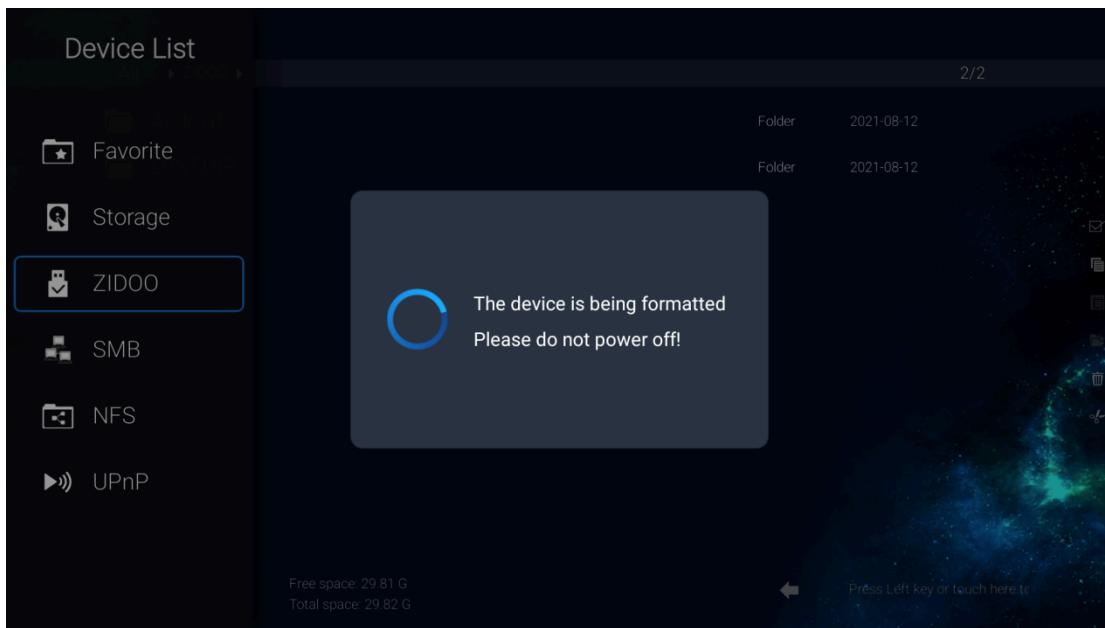
3. A pop-up warning menu will display, click “OK” to enter into next step.

Note: Formatting will erase all the contents of the external device.

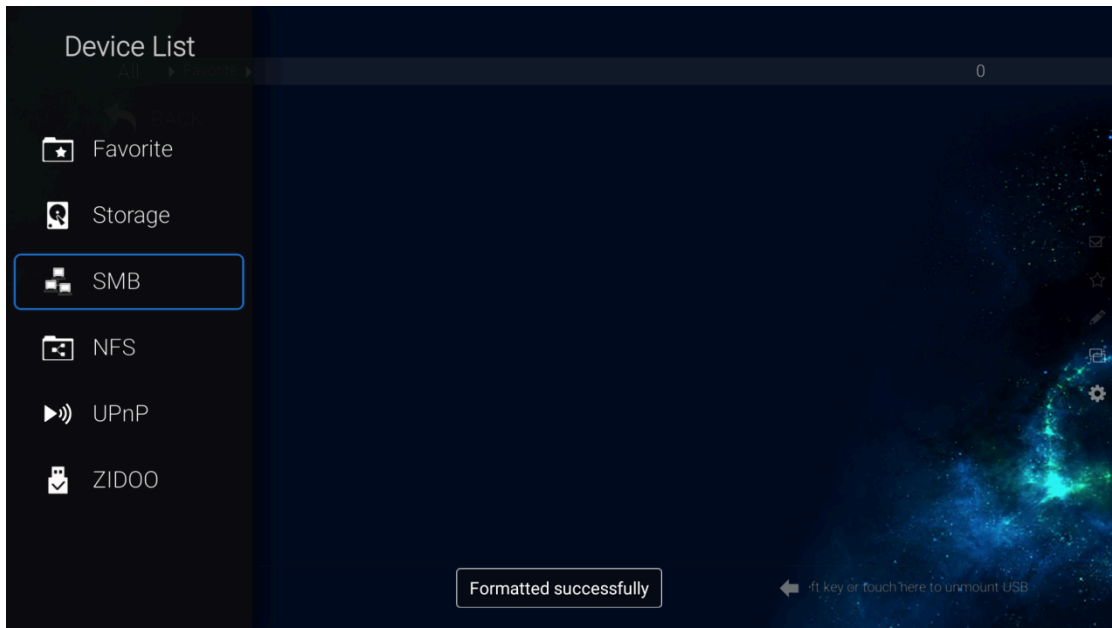


4. Input a device name, NTFS format is recommended, then start formatting.





5. When device is formatted successfully, there will be a prompt on the bottom.



THE END