

## **Kolhapur Railway Station**

The **Amrit Bharat Station Scheme** has been launched for development of Railway stations on Indian Railways. The scheme envisages development of stations on a continuous basis with a long-term approach.

It involves preparation of Master Plans and their implementation in phases to improve the amenities at the stations like improvement of station access, circulating areas, waiting halls, toilets, lift/escalators as necessary, cleanliness, free Wi-Fi, kiosks for local products through schemes like 'One Station One Product', better passenger information systems, Executive lounges, nominated spaces for business meeting, landscaping, etc keeping in view the necessity at each station. The scheme also envisages improvement of building, integrating the station with both sides of the city, multi-modal integration, amenities for Divyangjans, sustainable and environment friendly solutions, provision of Ballast less tracks, phasing and feasibility and creation of city centers at the station in the long term.

Under the scheme, **1337 stations** have been identified for upgradation/modernization over Indian Railways.

### **History of Kolhapur Railway Station:**

Kolhapur Railway Station is one of the main railway stations of central Railways in India. The construction of this railway station was started in 1888, and the line was inaugurated in 1891. This railway station was opened for the general public in 1891. Currently, the station is classified as NSG-3. The station has four platforms and average daily footfall of passengers is 15177.

### **Revitalizing Kolhapur Station under the Amrit Bharat Station Scheme**

Indian Railways, under the central scheme, has decided to carry redevelopment of 1,309 railway stations in the country. In this, 16 railway stations from the Pune division and 76 from Central Railways have been included. Kolhapur Station is being redeveloped under the Amrit Bharat Station Scheme with an investment of Rs 43.03 crore.

*Before Development*



*Proposed View*





### **Facility planned at Station:**

- **Enhanced Station Approaches and Circulating Area:** Improvement of station approaches with separate entry & exit, drop off zone, Porch, signages and landscaping for beautification of circulating area.
- **Inclusive Accessibility and Facilities for Divyangjan:** Divyangjan-friendly design with accessible signage, dedicated toilet facilities, and separate parking areas for two-wheelers, four-wheelers, and Divyangjan passengers.
- **Façade Enhancement:** Major improvement of the façade of the existing building with sandstone cladding, LED lighting, and local art work on walls for improved aesthetics.
- **New Passenger Amenities and Improved:** Provision of new booking office, AC & non-AC waiting hall, modern toilet block and improvement of old station building etc.
- **Platform Improvements:** Improvement of Platform surface & new shed and covering of platform surfaces up to FOB
- **Upgraded Passenger Information Systems:** Improvement to passenger information system by providing Coach Guidance display board, Multiline Display Boards, Single Line Display Boards, Public Addressing System, Large LED screens and GPS based Digital Clock.

## Design Philosophy

The local design philosophy for Kolhapur Railway Station blends modern amenities with traditional elements to create a functional and aesthetically pleasing environment. The design will focus on the following principles:

- **Reflecting Local Heritage:** Incorporating architectural features such as Sloping roofs, paintings celebrating the region's rich history, including its existence as princely state.
- **Use of Regional Materials:** Utilizing local materials like brick work, glass GRC and Mangalore tiles to maintain harmony with the surrounding landscape.
- **Cultural Integration:** Featuring local art and craftsmanship to celebrate Kolhapur's heritage and foster a connection with the community.
- **Sustainability and Climate Sensitivity:** Focusing on energy-efficient cooling, shade structures, and green spaces to address the semi-arid climate while promoting sustainability.
- **Modern Amenities with Traditional Charm:** Balancing modern infrastructure with traditional design elements, ensuring cultural identity is preserved through motifs in seating and flooring.
- **Warm Color Palette:** Using earthy tones inspired by Maharashtra's landscape and historical palaces to create a welcoming atmosphere.

These principles will transform Kolhapur Railway Station into a modern, sustainable, and culturally rich gateway, enhancing the passenger experience while preserving the region's identity.

### Challenges overcome:

The old station building lacked the aesthetics and the lack of proper space utilization, which have been improved by the revamping of the complete station building. Now the station building is more spacious and passenger friendly. The existing circulating area was not having the proper movement of the vehicle and the same has been improved through the planned development of circulating area, separate entry/exit and increased parking space. This will give an ease of movement of vehicles and proper vehicle navigation in the circulating area. The station platform's surfacing was improved with tactile marking for Divyangjan, and additional platform shelters were provided for the passengers waiting at platform, which will further help them during hot and rainy weather. New spacious waiting rooms/ halls were constructed, which will provide a comfortable waiting space to the passengers. Booking facility constructed giving restriction free access to passengers. Modern toilets are constructed providing hygienic & comfortable experience to users.

**Current Status of Work:**

**Entry & Exit Gate**



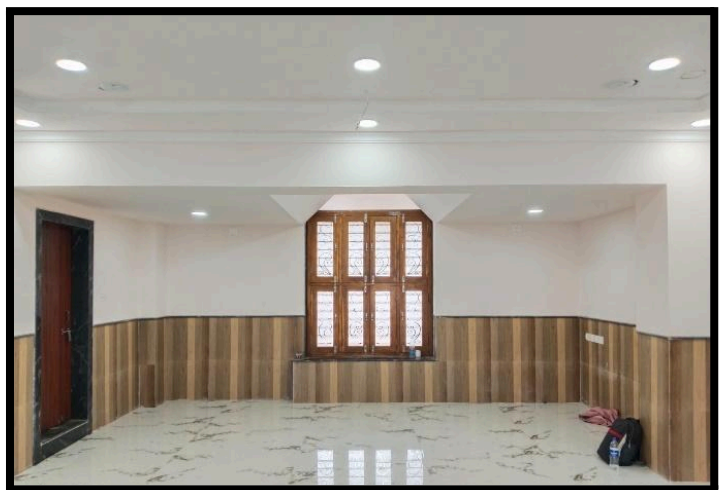
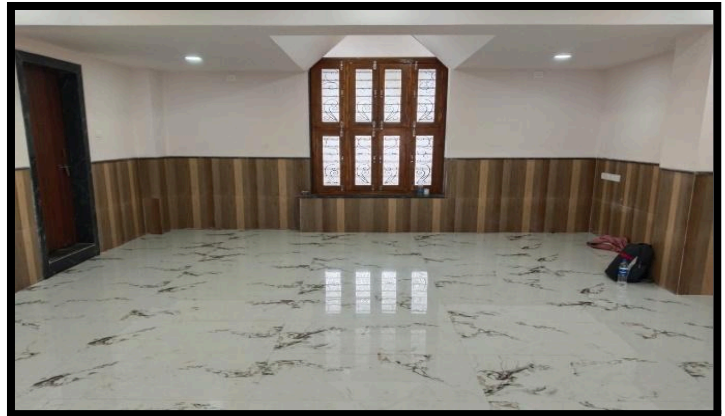
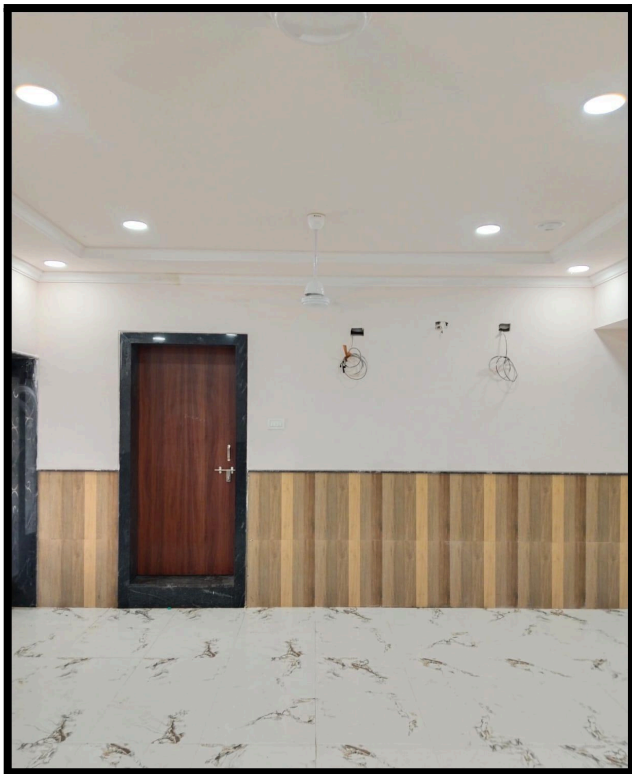
**Main Entrance**



*New Booking office*



*Improvement to Waiting Hall (Work in progress)*



*Improvement to FOB (Work in progress)*



*Public toilet*



*Improvement to Toilet*



*Improvement to COP*



*Improvement to Reservation (Work in progress)*

